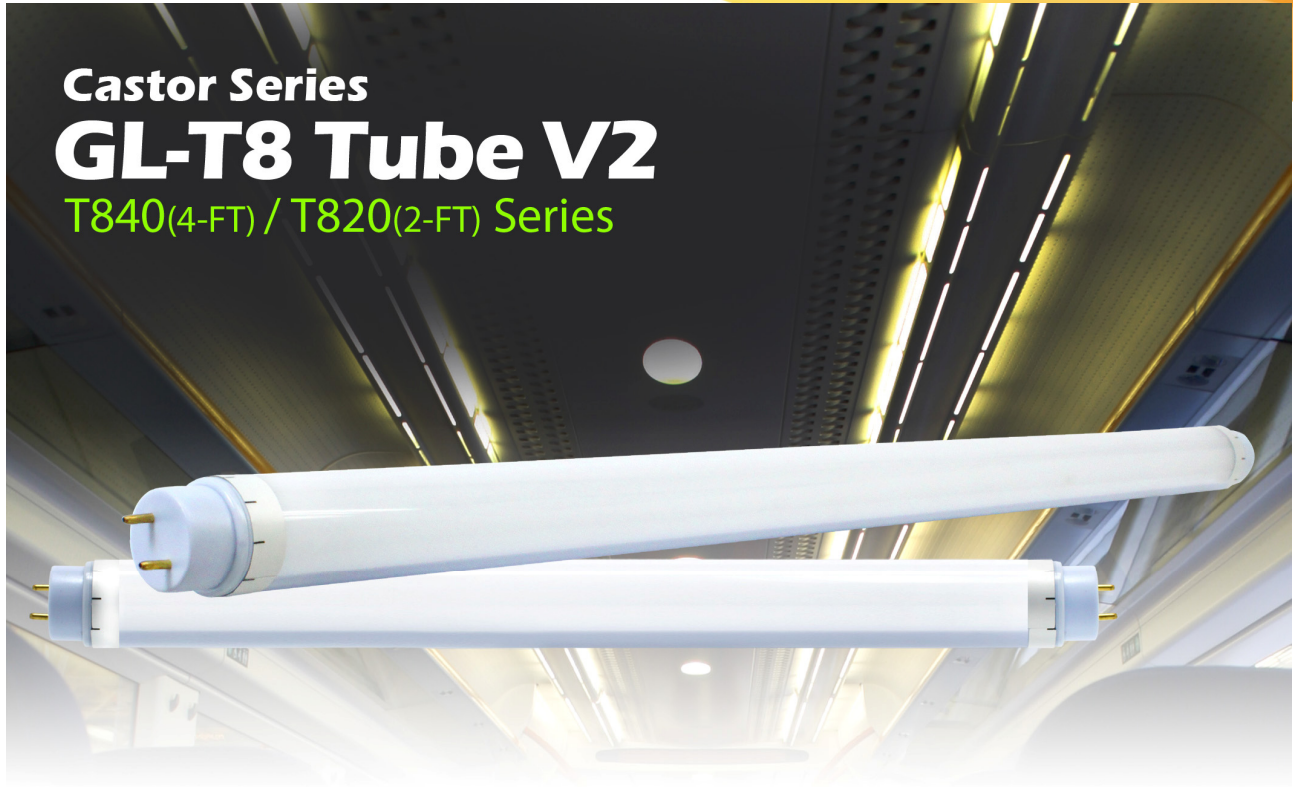


## Castor Series **GL-T8 Tube V2** T840(4-FT) / T820(2-FT) Series



### **Features**

- Indoor use only.
- Direct replacement for traditional T8 fluorescent tubes Rotatable (0°/ 45°/ 90°)
- Perfect for a wide range of applications.
- High power efficiency > 80%.
- High luminous efficacy LEDs .
- Easy to Instant on, no flicker or buzz.
- Simple rewiring installation allows lamps to run directly off.
- No mercury allowing for non-hazardous waste disposal.
- Emits virtually no UV rays or IR.
- Glass-free for safer working conditions.
- Energy saving and environment friendly.



## **Specifications**

### **T840 (4-FT)**

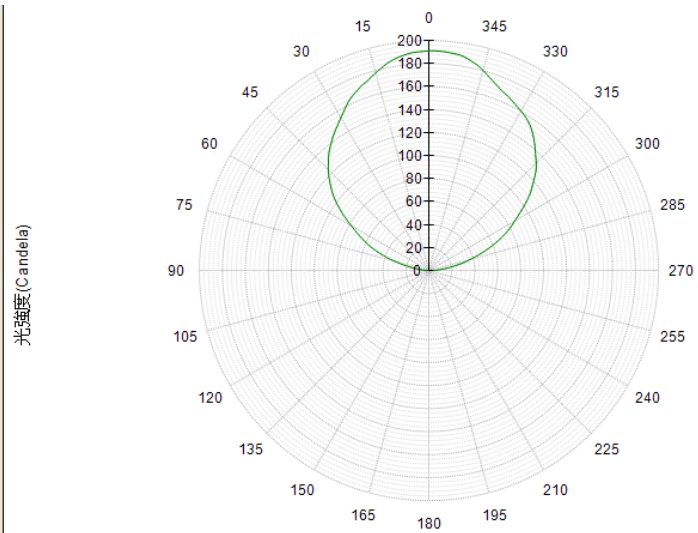
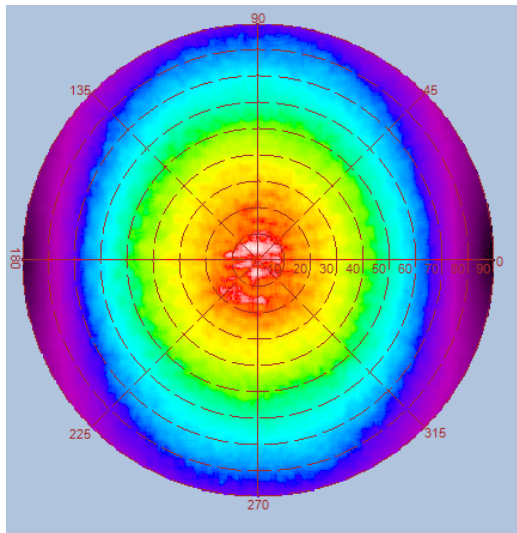
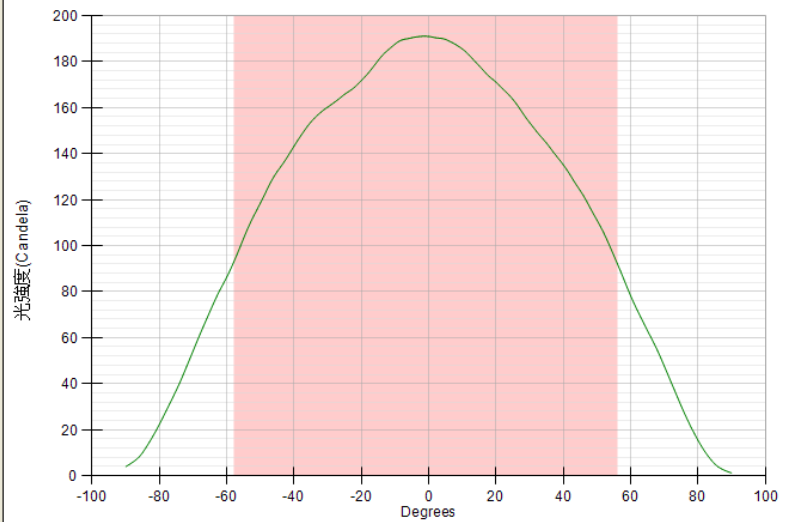
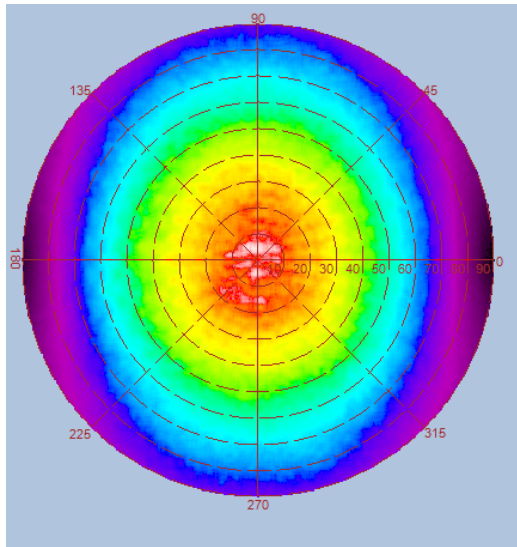
Type	GL-T840-WW	GL-T840-NW	GL-T840-CW
Energy Used	20W		
Rated Life	30,000 Hours		
Input Voltage	100-240V AC		
Power Factor (PF)	0.9		
Color (CCT)	3000K	4000K	6000K
Luminous Flux (lm)	1280lm	1450lm	1600lm
Luminous Efficacy	64lm/W	72lm/W	80lm/W
CRI	80	80	75
Base	G13		
Dimension	Ø30 x 1198mm		
Beam Angle	120		

### **T820 (2-FT)**

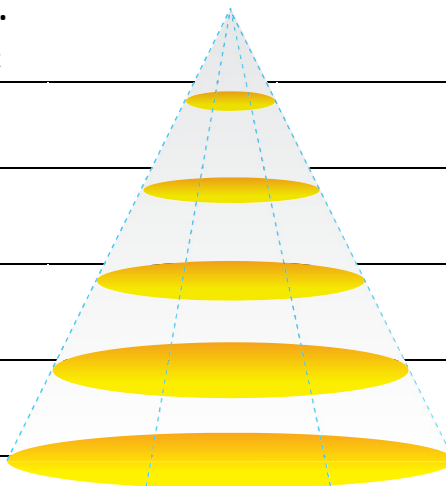
Type	GL-T820-WW	GL-T820-NW	GL-T820-CW
Energy Used	10W		
Rated Life	30,000 Hours		
Input Voltage	100-240V AC		
Power Factor (PF)	0.9		
Color (CCT)	3000K	4000K	6000K
Luminous Flux (lm)	640lm	720lm	800lm
Luminous Efficacy	64lm/W	72lm/W	80lm/W
CRI	80	80	75
Base	G13		
Dimension	Type1: Ø30 x 580mm Type2: Ø30 x 589mm		
Beam Angle	120		

## Luminous Intensity Distribution Diagram

**GL-T802-WW / CCT : 3000K**

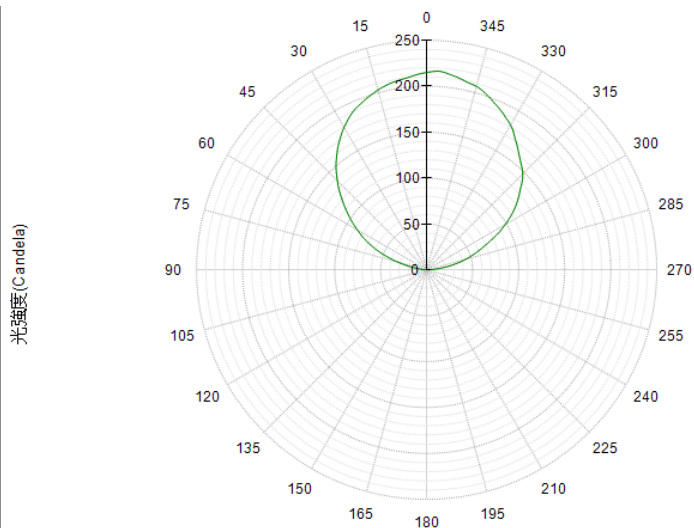
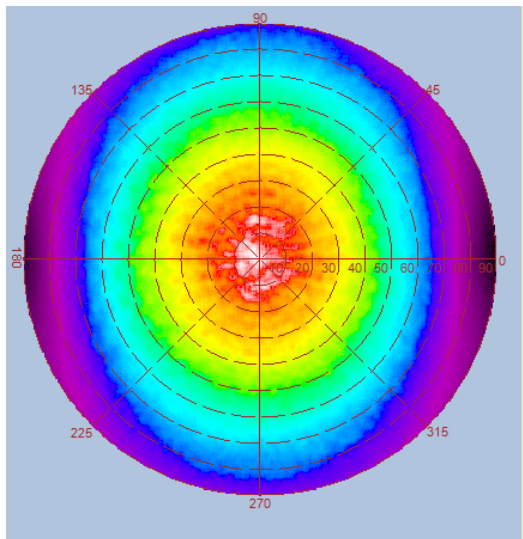
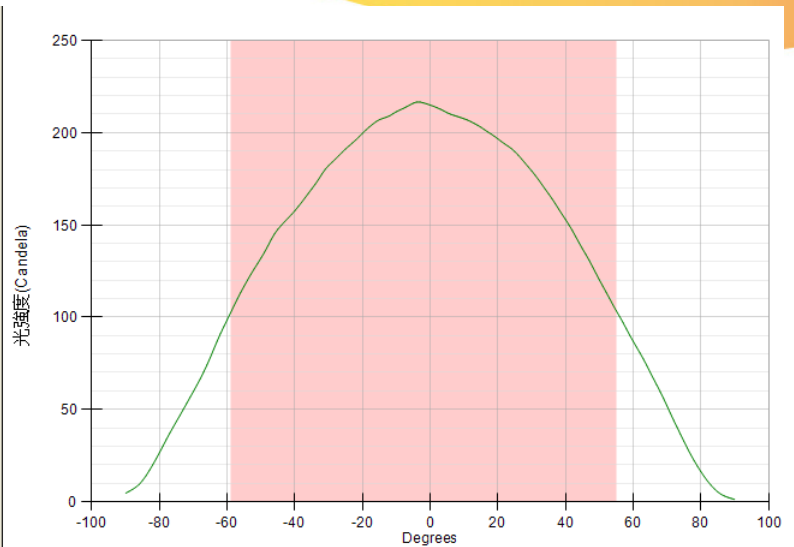
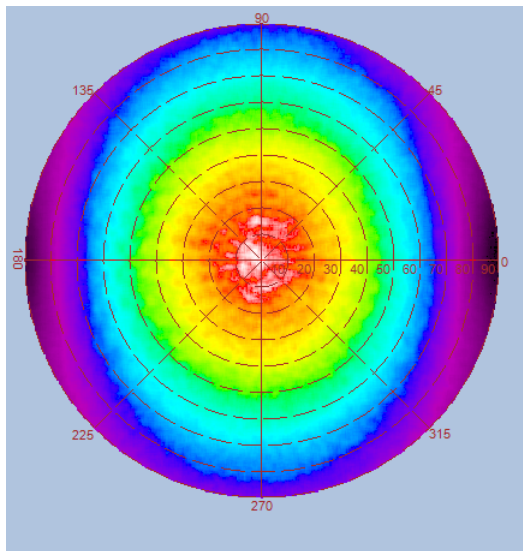


Height	E Avg.	E Max.	Diameter
1.0M	97 Lx	215 Lx	302 cm
2.0M	24 Lx	54 Lx	604 cm
3.0M	11 Lx	24 Lx	906 cm
4.0M	6 Lx	13 Lx	1208 cm
5.0M	4 Lx	9 Lx	1510 cm

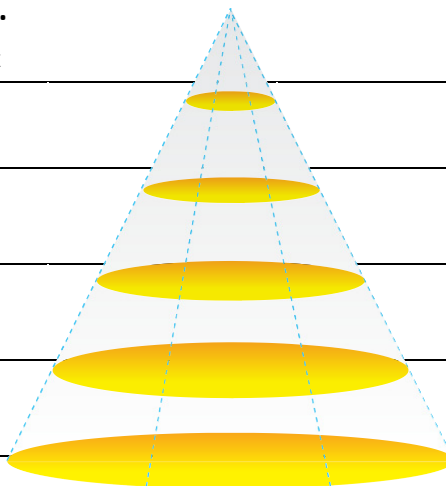


## Luminous Intensity Distribution Diagram

**GL-T802-NW / CCT : 4000K**



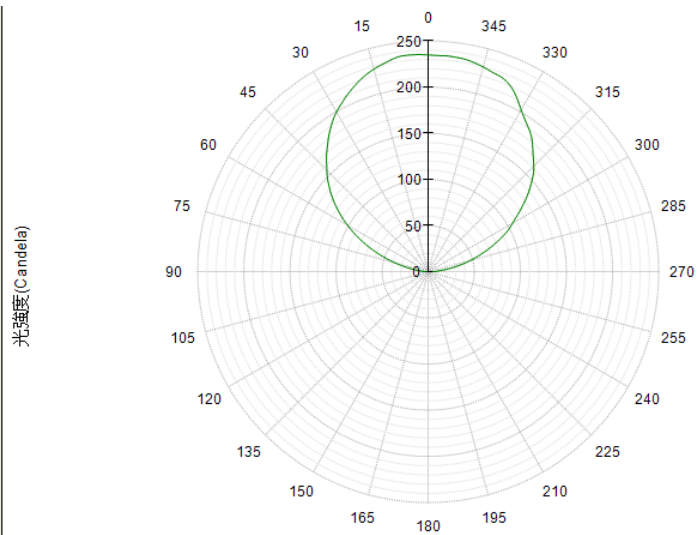
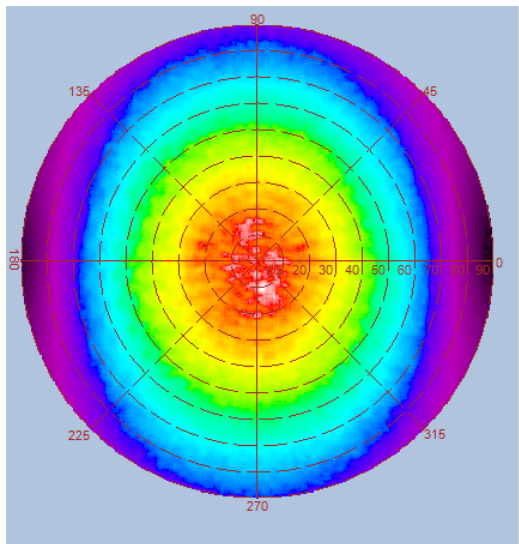
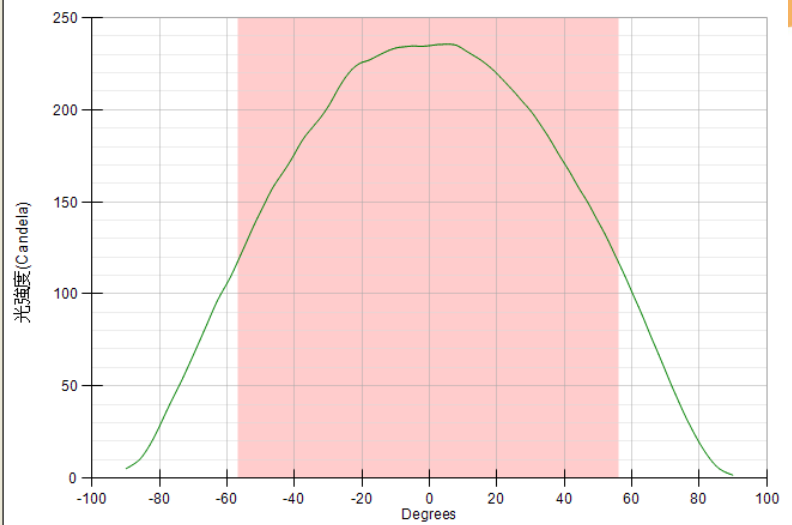
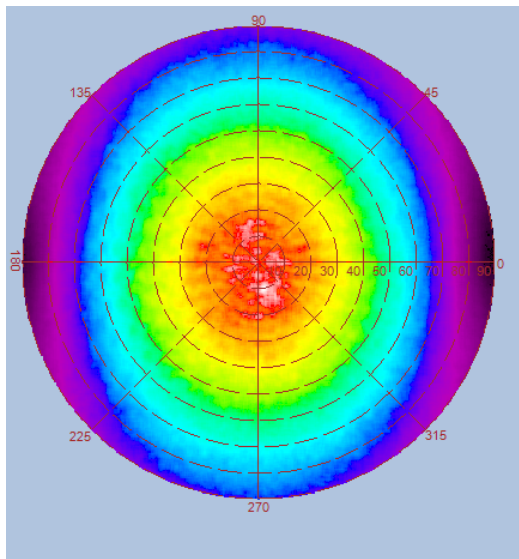
Height	E Avg.	E Max.	Diameter
1.0M	109 Lx	242 Lx	302 cm
2.0M	27 Lx	61 Lx	604 cm
3.0M	12 Lx	27 Lx	906 cm
4.0M	7 Lx	15 Lx	1208 cm
5.0M	4 Lx	10 Lx	1510 cm



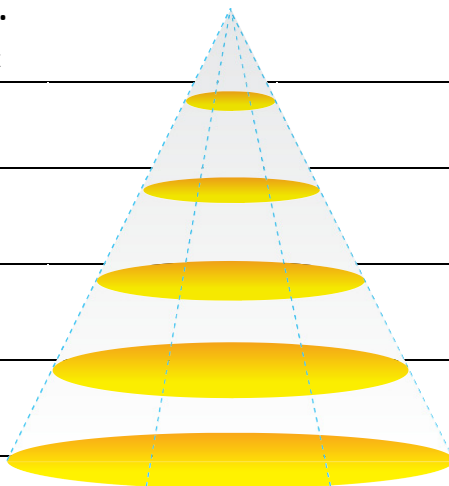


## Luminous Intensity Distribution Diagram

**GL-T802-CW / CCT : 6000K**

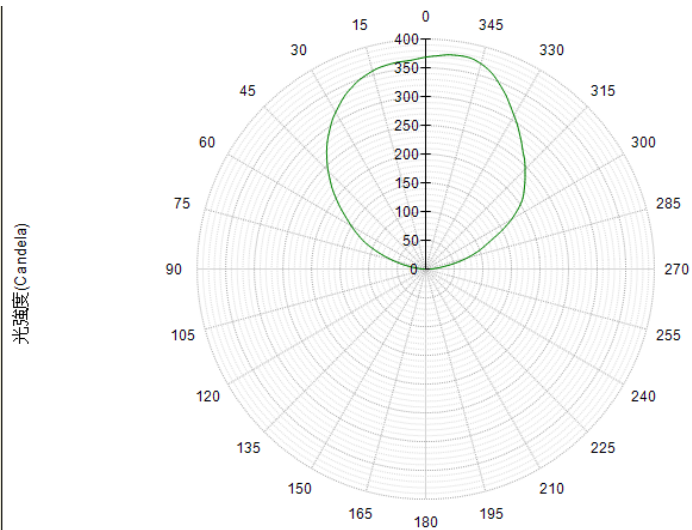
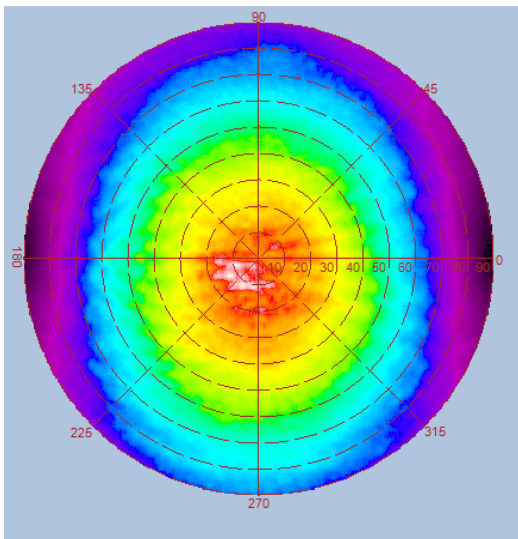
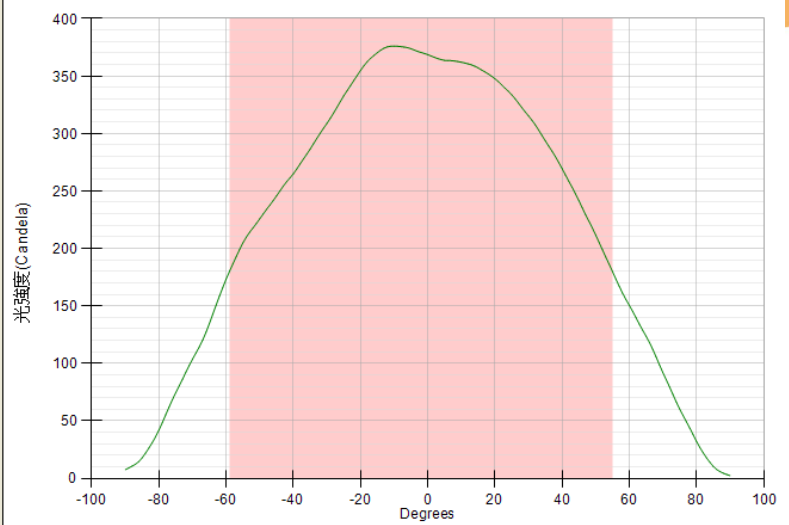
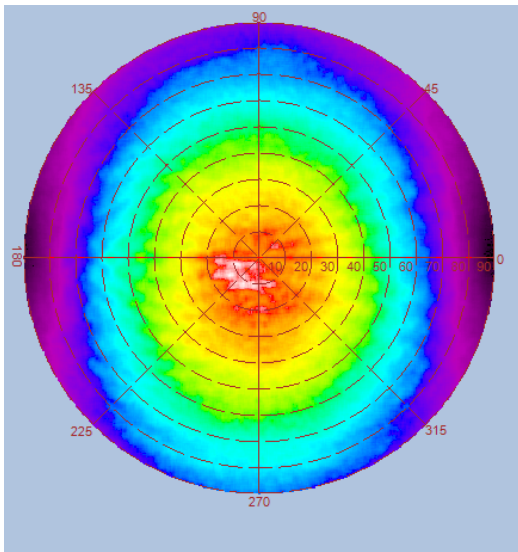


Height	E Avg.	E Max.	Diameter
1.0M	121 Lx	264 Lx	302 cm
2.0M	30 Lx	66 Lx	604 cm
3.0M	13 Lx	29 Lx	906 cm
4.0M	8 Lx	17 Lx	1208 cm
5.0M	5 Lx	11 Lx	1510 cm

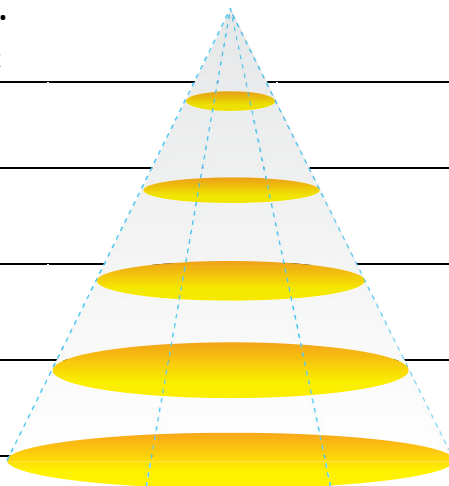


## Luminous Intensity Distribution Diagram

**GL-T804-WW / CCT : 3000K**

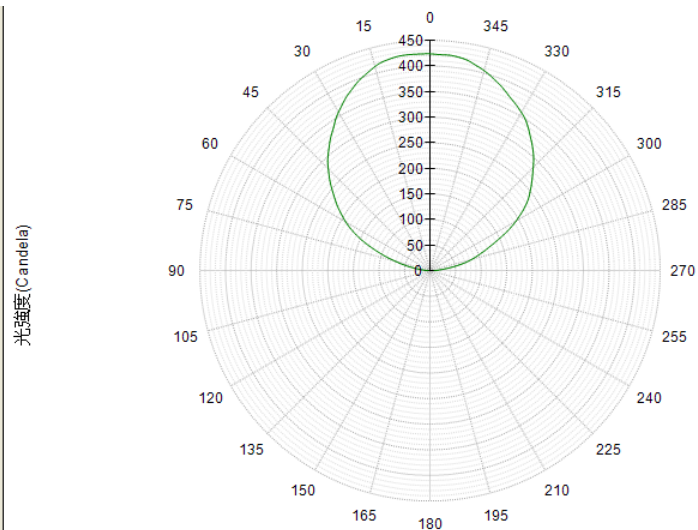
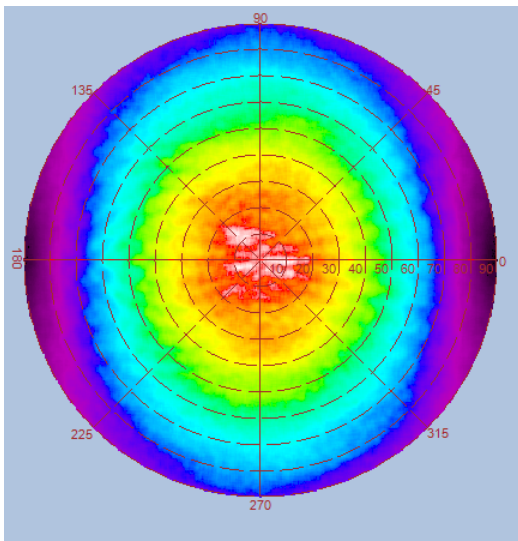
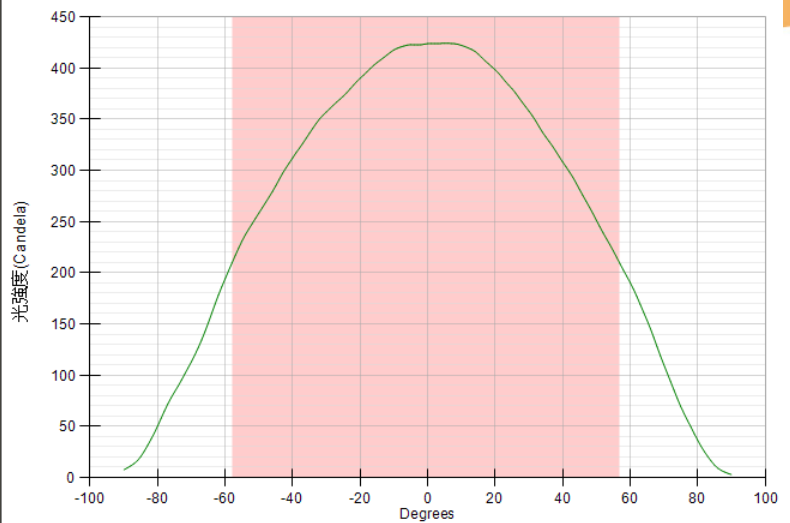
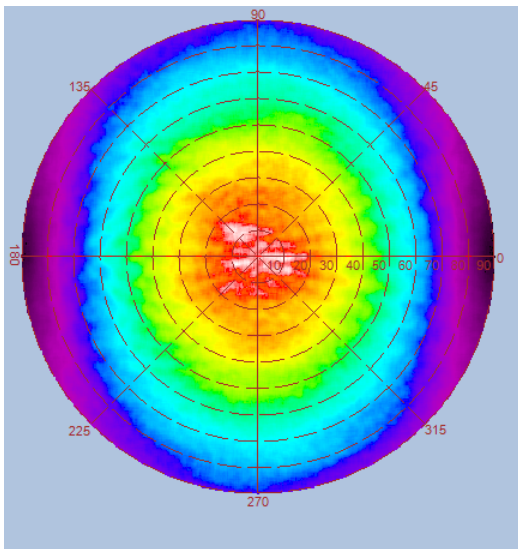


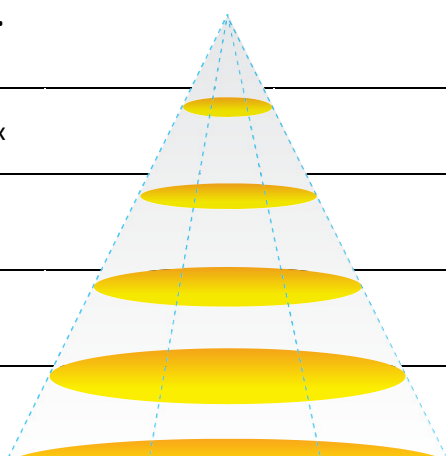
Height	E Avg.	E Max.	Diameter
1.0M	189 Lx	366 Lx	302 cm
2.0M	47 Lx	92 Lx	604 cm
3.0M	21 Lx	41 Lx	906 cm
4.0M	12 Lx	23 Lx	1208 cm
5.0M	8 Lx	15 Lx	1510 cm



## Luminous Intensity Distribution Diagram

**GL-T804-NW / CCT : 4000K**

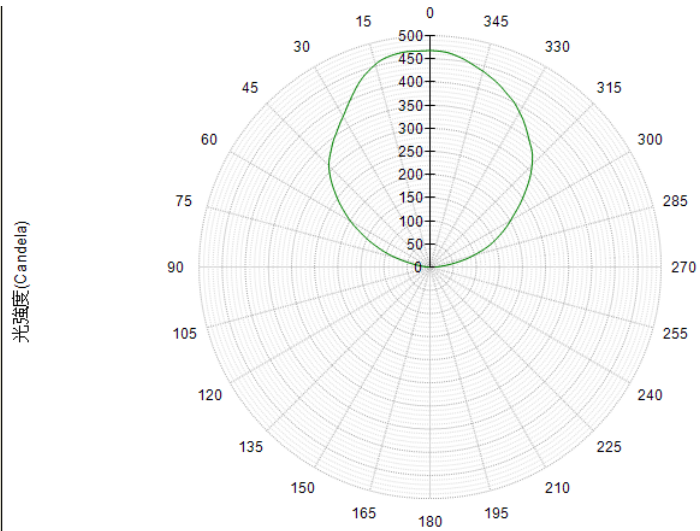
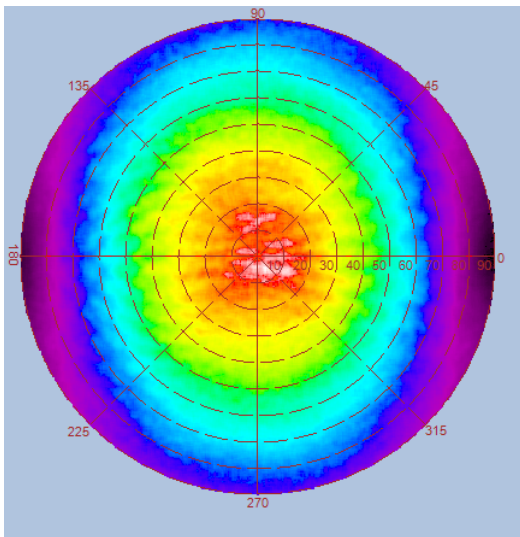
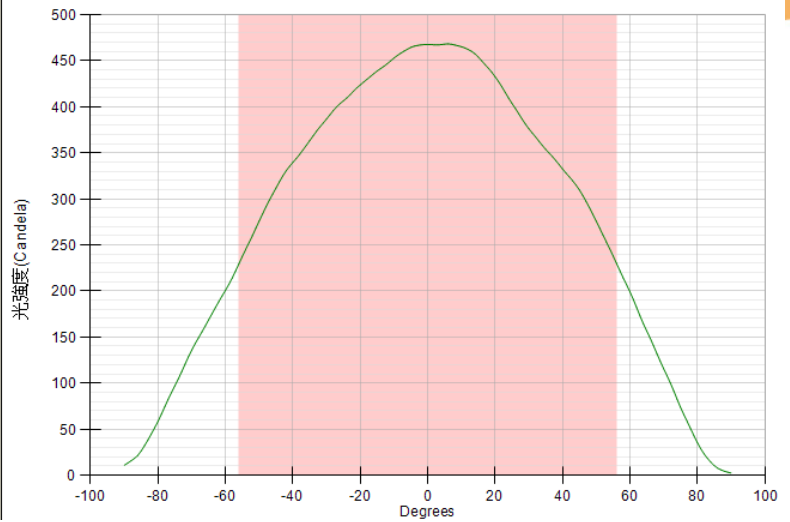
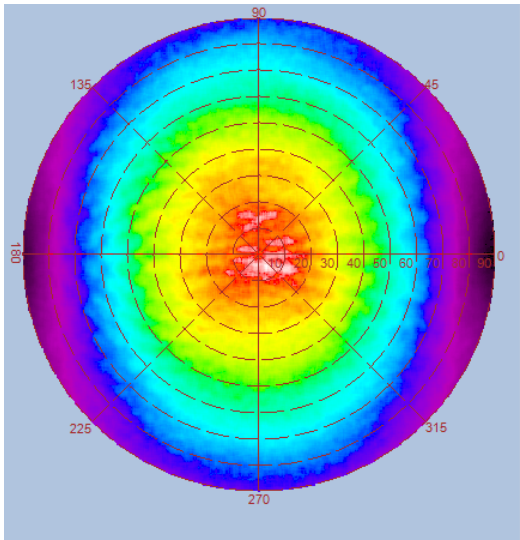


Height	E Avg.	E Max.		Diameter
1.0M	216 Lx	417 Lx		302 cm
2.0M	54 Lx	104 Lx		604 cm
3.0M	24 Lx	46 Lx		906 cm
4.0M	14 Lx	26 Lx		1208 cm
5.0M	9 Lx	17 Lx		1510 cm



## Luminous Intensity Distribution Diagram

**GL-T804-CW / CCT : 6000K**



Height	E Avg.	E Max.	Diameter
1.0M	235 Lx	453 Lx	302 cm
2.0M	59 Lx	113 Lx	604 cm
3.0M	26 Lx	50 Lx	906 cm
4.0M	15 Lx	28 Lx	1208 cm
5.0M	9 Lx	18 Lx	1510 cm

