



Features

- One piece, easy installation.
- Can be mounted on nearly any surface: wall or ceiling.
- Die-cast aluminum construction - light and sturdy.
- Color temperatures 3000K/ 4000K/ 5700K available.
- Optional rod pendant mount.
- 3 different models under this series: non-dimmable, 3-in-1 dimmable, and DC input.



Specifications

GL-PL24-SM (non-dimmable)

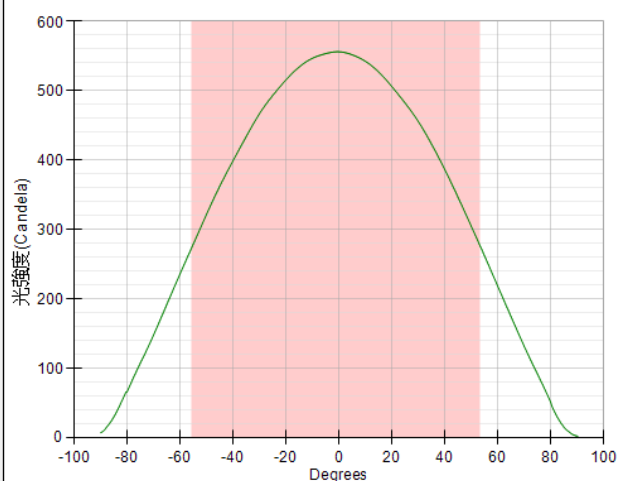
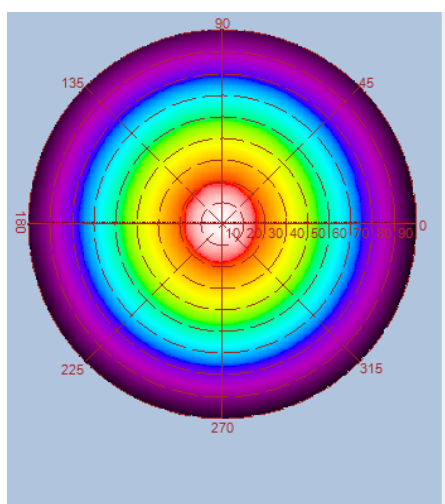
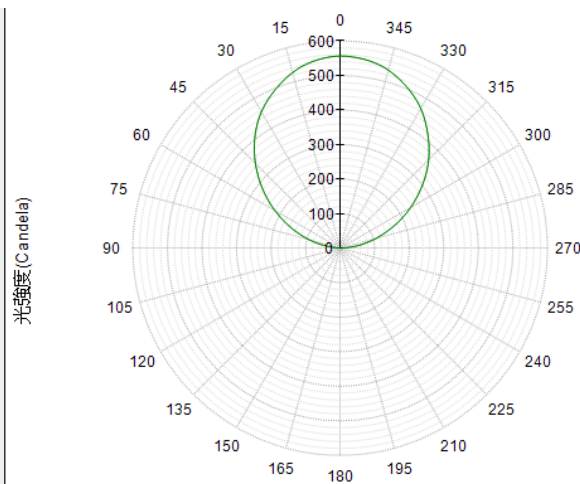
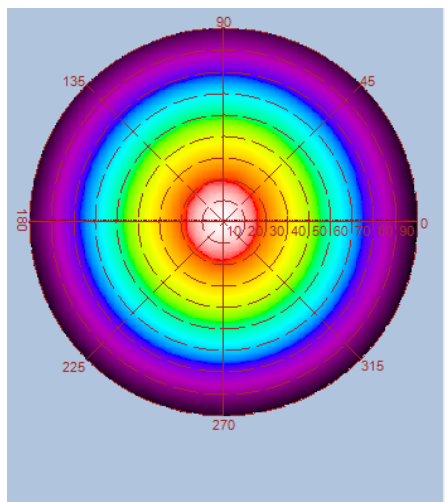
Type	GL-PL24-SM-WW	GL-PL24-SM-NW	GL-PL24-SM-CW
Energy Used	17.3W		
Rated Life	30,000 Hours		
Input Voltage	100-240V AC (Driver with cUL Certificate)		
Power Factor (PF)	0.89 at 120V AC, 0.81 at 240V AC		
CCT (color)	3000K	4000K	5700K
Luminous Flux	1400 lm	1550 lm	1600 lm
System Efficacy	81 lm/W	90 lm/W	92 lm/W
CRI (Minimum)	80	80	80
Beam Angle	110°		
Dimension	240 x 240 x 40 mm		
IP Rating	IP20		
Operation Temperature	-20°C ~ +40°C		
Bundled Driver	GP-HS15P-22C1 (Driver Output : Constant Current 700mA, 14~24V)		
Net Weight	1.0 Kg (with driver)		
Package	10 Boxes / Carton		

GL-PL24DA-SM (DC dimmable : 1-10V/PWM/Resistor)

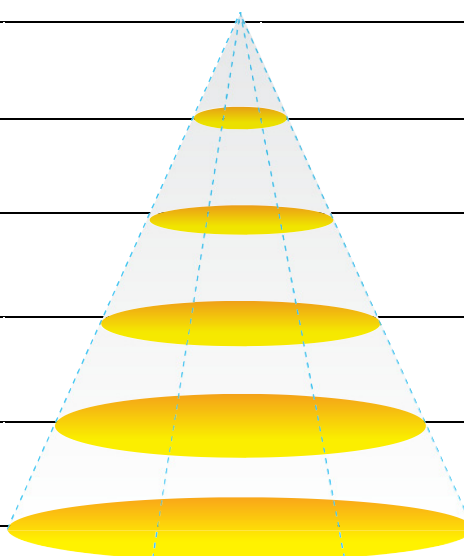
Type	GL-PL24DA-SM-WW	GL-PL24DA-SM-NW	GL-PL24DA-SM-CW
Energy Used	17.3W		
Rated Life	30,000 Hours		
Input Voltage	100-240V AC		
Power Factor (PF)	0.89 at 120V AC, 0.81 at 240V AC without dimmer		
CCT (color)	3000K	4000K	5700K
Luminous Flux	1400 lm	1550 lm	1600 lm
System Efficacy	81 lm/W	90 lm/W	92 lm/W
CRI (Minimum)	80	80	80
Beam Angle	110°		
Dimension	240 x 240 x 40 mm		
IP Rating	IP20		
Operation Temperature	-20°C ~ +40°C		
Bundled Driver	GP-HS15P-24CA (for 1-10V/PWM/Resistor) (Driver Output : Constant Current 700mA, 24V)		
Net Weight	1.0 Kg (with driver)		
Package	10 Boxes / Carton		

Luminous Intensity Distribution Diagram

GL-PL24-SM-WW / CCT : 3000K

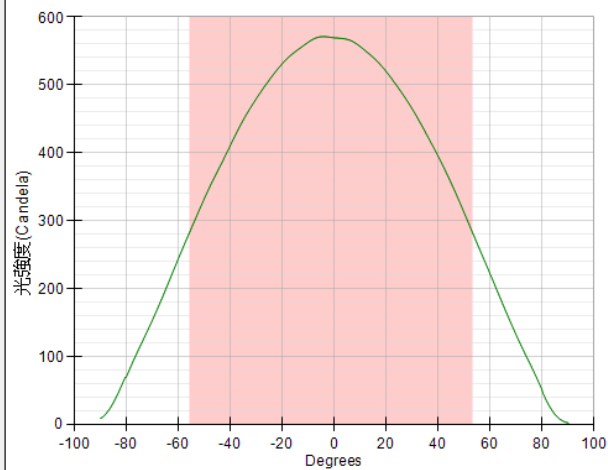
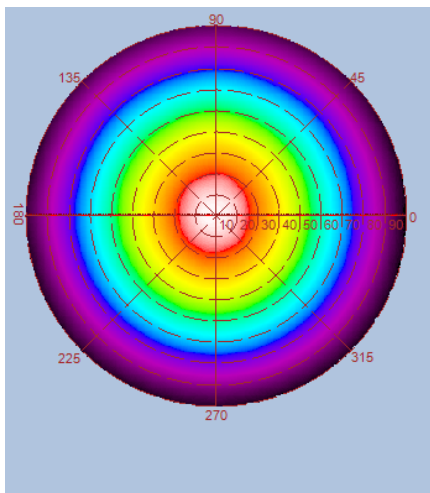
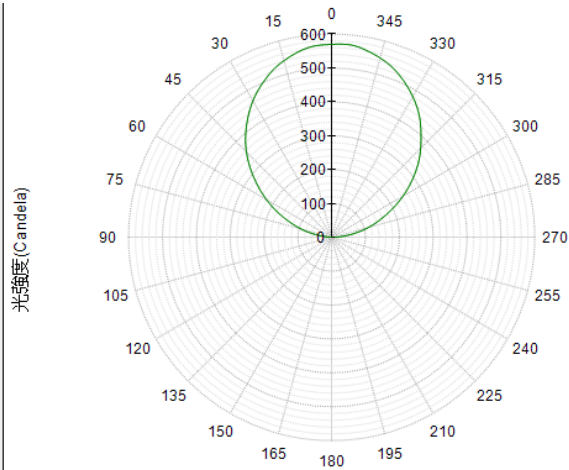
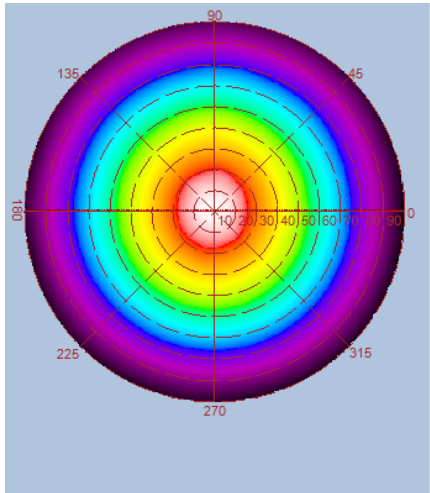


Height	E Avg.	E Max.	Diameter
1.0M	284 Lx	605 Lx	280 cm
2.0M	68 Lx	143 Lx	560 cm
3.0M	30 Lx	62 Lx	841 cm
4.0M	16 Lx	34 Lx	1121 cm
5.0M	10 Lx	22 Lx	1401 cm

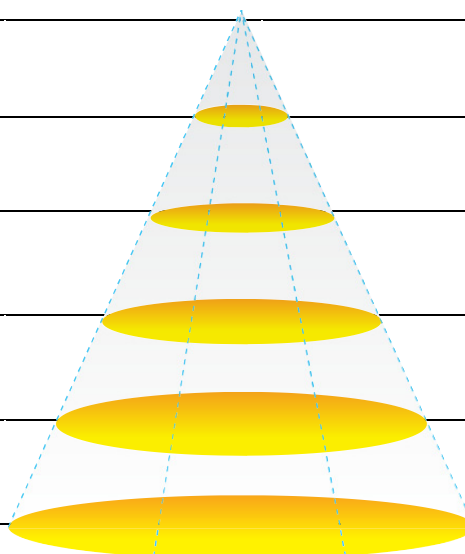


Luminous Intensity Distribution Diagram

GL-PL24-SM-NW / CCT : 4000K

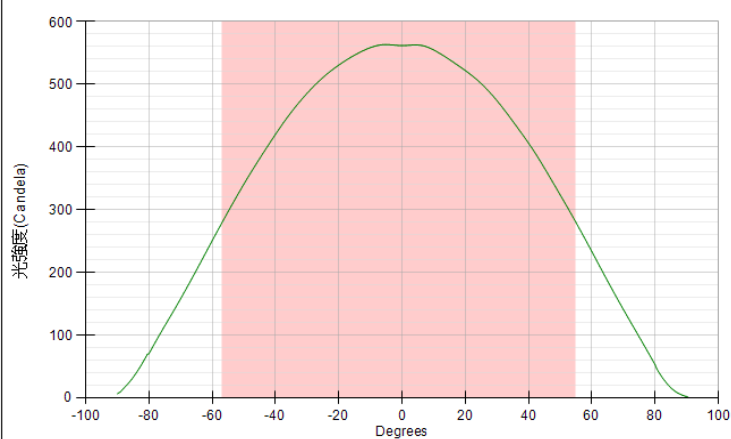
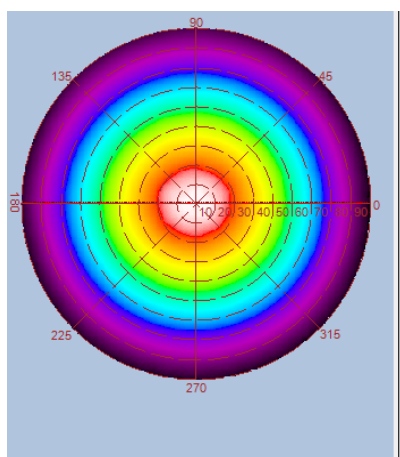
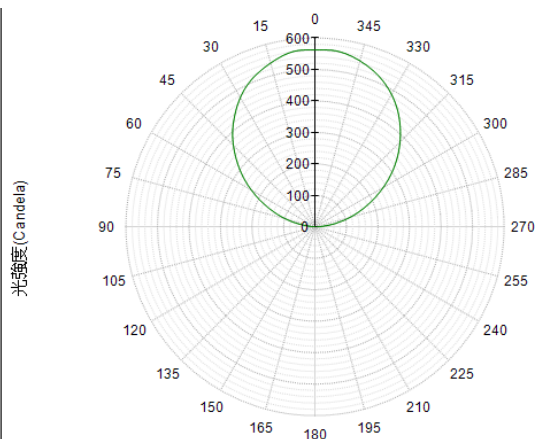
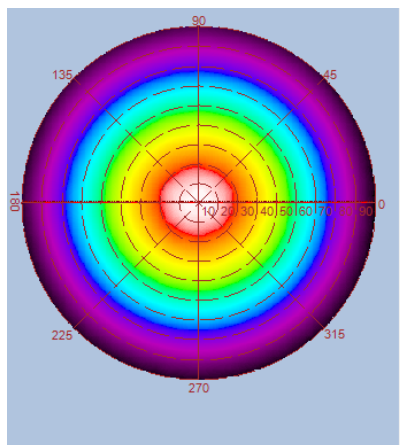


Height	E Avg.	E Max.	Diameter
1.0M	291 Lx	622 Lx	280 cm
2.0M	70 Lx	147 Lx	560 cm
3.0M	31 Lx	64 Lx	841 cm
4.0M	17 Lx	35 Lx	1121 cm
5.0M	11 Lx	22 Lx	1401 cm

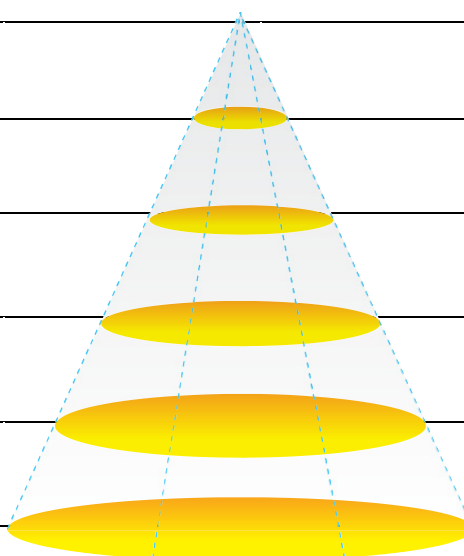


Luminous Intensity Distribution Diagram

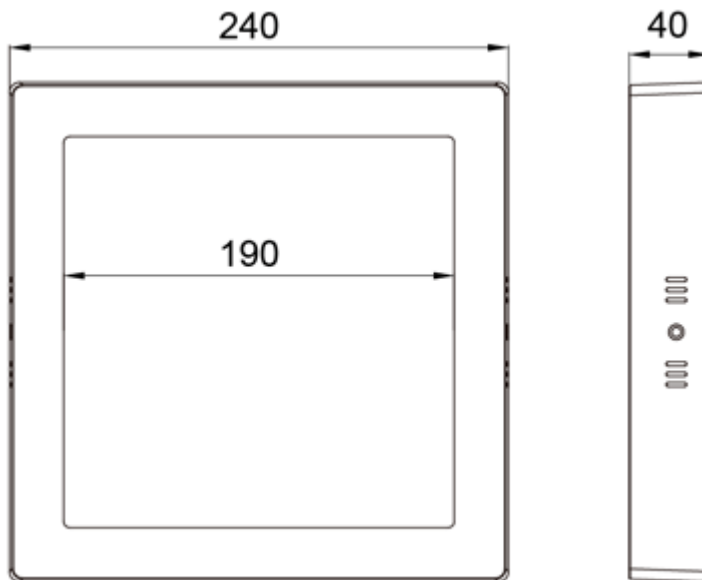
GL-PL24-SM-CW / CCT : 5700K



Height	E Avg.	E Max.	Diameter
1.0M	279 Lx	617 Lx	296 cm
2.0M	68 Lx	146 Lx	593 cm
3.0M	30 Lx	64 Lx	889 cm
4.0M	17 Lx	36 Lx	1186 cm
5.0M	11 Lx	23 Lx	1482 cm



Outline / Dimension



With metal rod mounted (for Optional)

