



## Features

- High system efficacy up to 90 lm/W.
- Recessed, surface mount, ceiling mount, suspension cable, and Clip-on mounting options are all available.
- Elegant structure, slim and light design.
- 3 optional color temperatures and 3 sizes available.
- Optional dimming available.
- Ideal replacement for fluorescent tube lights or louver lights.



## Specifications

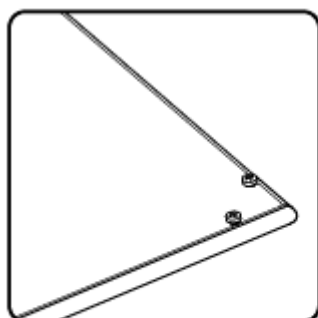
### GL-PL0606-V2 (non-dimmable)

Type	GL-PL0606-V2A-WW GL-PL0606-V2B-WW GL-PL0606-V2C-WW	GL-PL0606-V2A-NW GL-PL0606-V2B-NW GL-PL0606-V2C-NW	GL-PL0606-V2A-CW GL-PL0606-V2B-CW GL-PL0606-V2C-CW
Energy Used	44W		
Rated Life	30,000 Hours		
Input Voltage	100-240V AC Driver with CUL Certificate Supports 277V AC for North America only		
Power Factor (PF)	0.96 at 120V AC, 0.91 at 240V AC		
CCT (color)	3000K	4000K	6000K
Luminous Flux (lm)	3650 lm	3900 lm	3950 lm
System Efficacy	83 lm/W	89 lm/W	90 lm/W
CRI (Minimum)	80		
Beam Angle	110°		
IP Rating	IP40		
Operation Temperature	-20°C ~ +40°C		
Bundled Driver	HS60P-24C1		
Package	4 PCS / Carton		

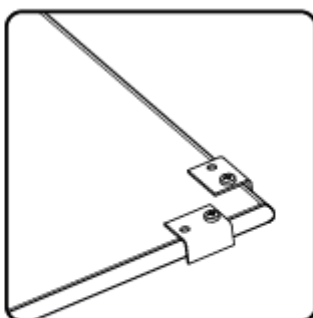
### GL-PL0606DA-V2 (DC dimmable : 1-10V/PWM/Resistor)

Type	GL-PL0606DA-V2A-WW GL-PL0606DA-V2B-WW GL-PL0606DA-V2C-WW	GL-PL0606DA-V2A-NW GL-PL0606DA-V2B-NW GL-PL0606DA-V2C-NW	GL-PL0606DA-V2A-CW GL-PL0606DA-V2B-CW GL-PL0606DA-V2C-CW
Energy Used	44W		
Rated Life	30,000 Hours		
Input Voltage	100-240V AC Driver with CUL Certificate Supports 277V AC for North America only		
Power Factor (PF)	0.96 at 120V AC, 0.91 at 240V AC		
CCT (color)	3000K	4000K	6000K
Luminous Flux (lm)	3650 lm	3900 lm	3950 lm
System Efficacy	83 lm/W	89 lm/W	90 lm/W
CRI (Minimum)	80		
Beam Angle	110°		
IP Rating	IP40		
Operation Temperature	-20°C ~ +40°C		
Bundled Driver	HS60P-24CA1 (for 1-10V/PWM/Resistor)		
Package	4 PCS / Carton		

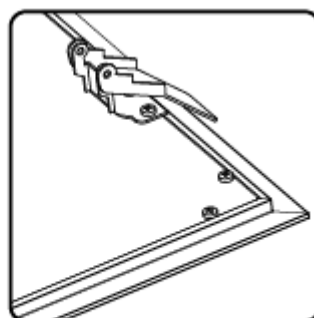
## Versatile Installation



Type A :  
595 x 595 x 10 mm  
3.5 Kg (with driver)

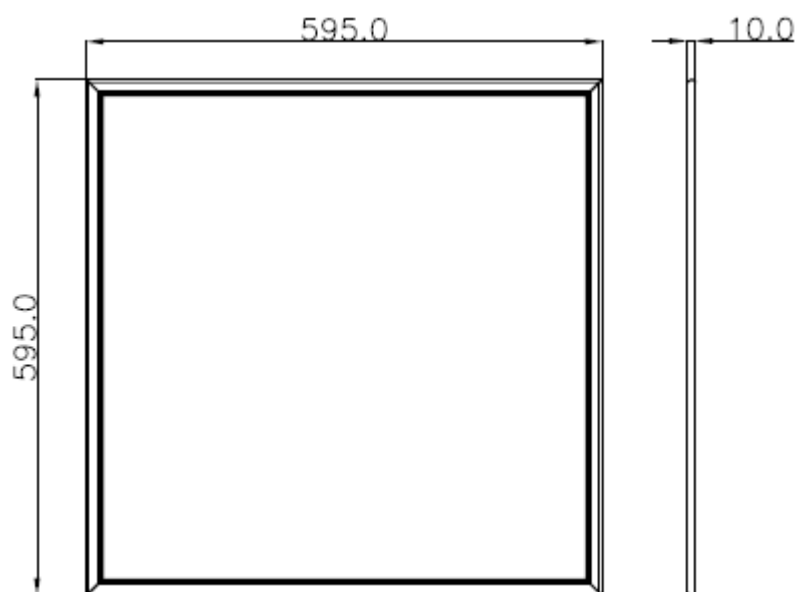


Type B :  
600 x 600 x 10 mm  
3.5 Kg (with driver)



Type C :  
615 x 615 x 10 mm  
3.8 Kg (with driver)

## Outline / Dimension



## 5 methods of installation



Recessed



Clip-on



Suspension



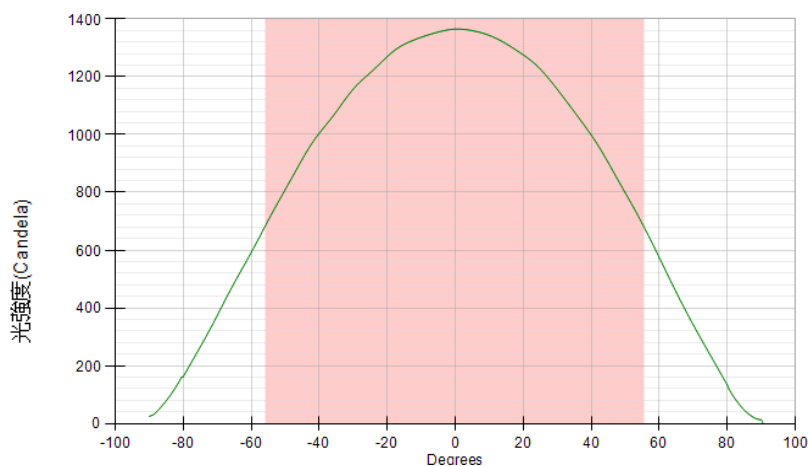
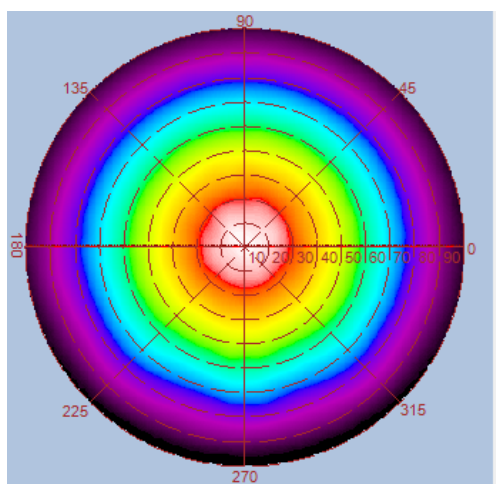
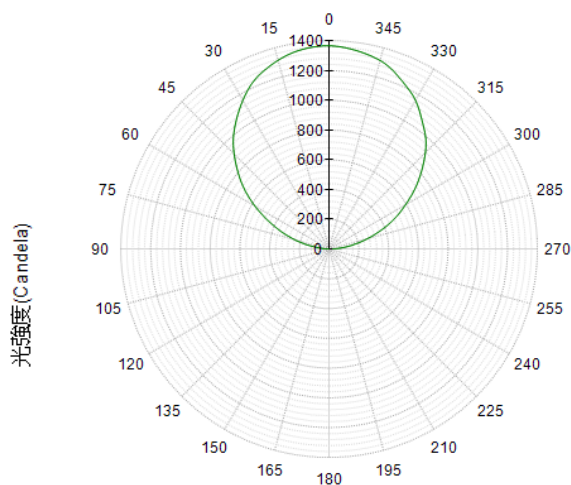
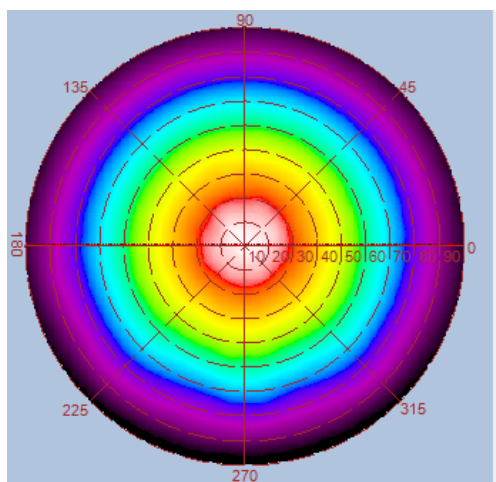
Ceiling Mount



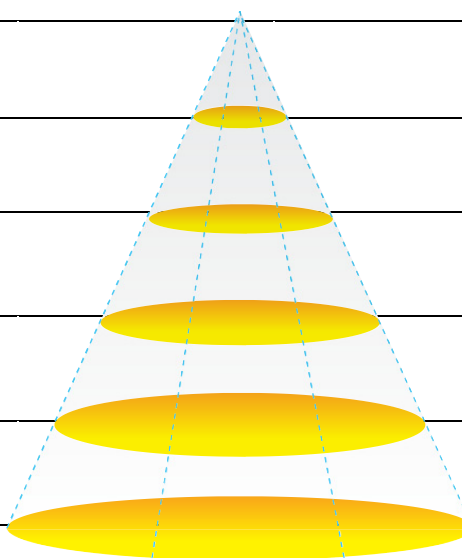
Surface Mount

## Luminous Intensity Distribution Diagram

GL-PL0606-V2-WW / CCT : 3000K

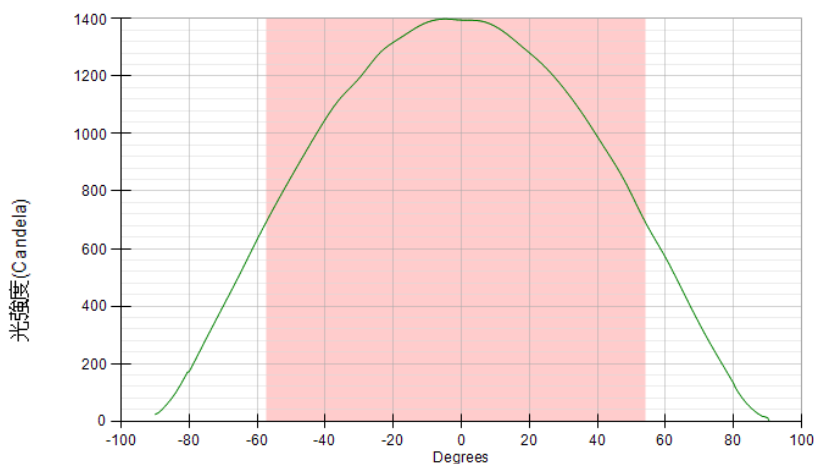
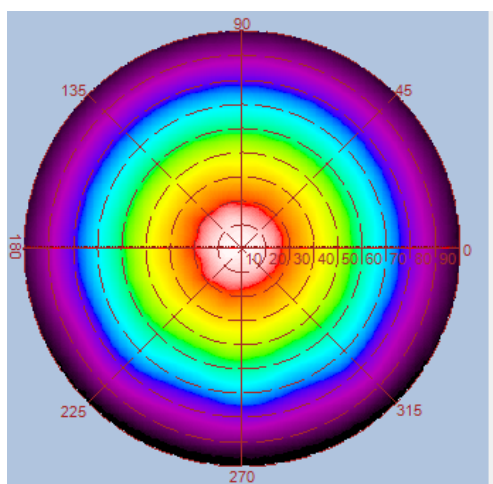
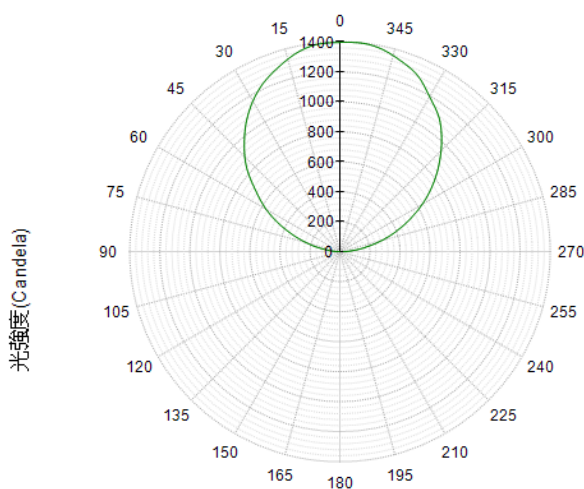
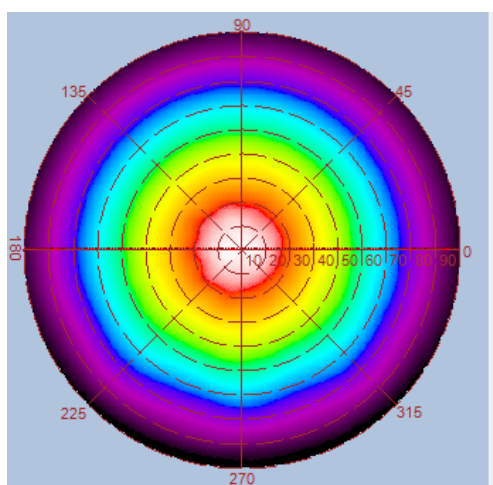


Height	E Avg.	E Max.	Diameter
1.0M	657 Lx	1372 Lx	293 cm
2.0M	164 Lx	353 Lx	587 cm
3.0M	72 Lx	154 Lx	881 cm
4.0M	40 Lx	85 Lx	1174 cm
5.0M	25 Lx	54 Lx	1468 cm

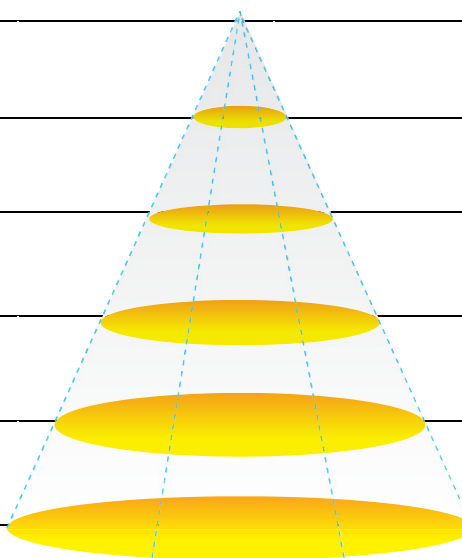


## Luminous Intensity Distribution Diagram

GL-PL0606-V2-NW / CCT : 4000K



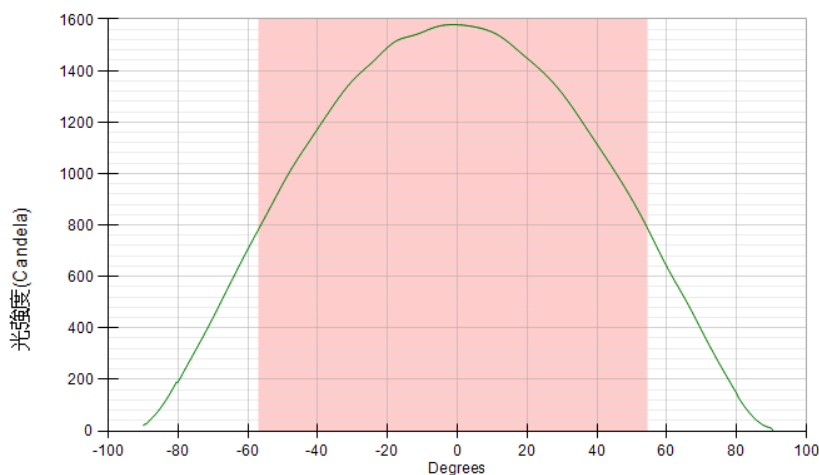
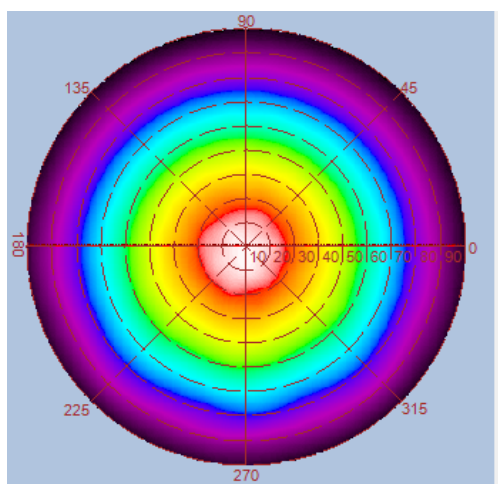
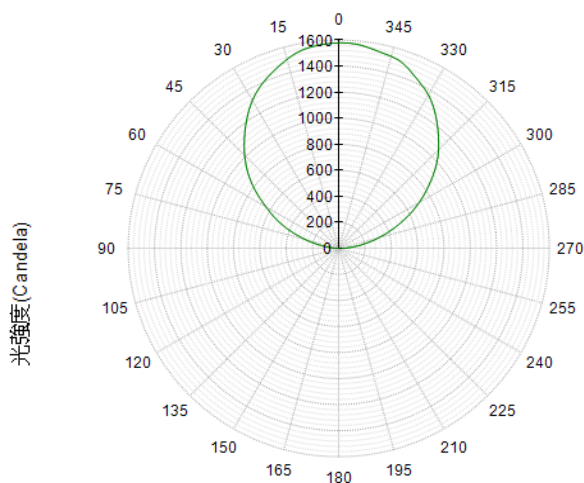
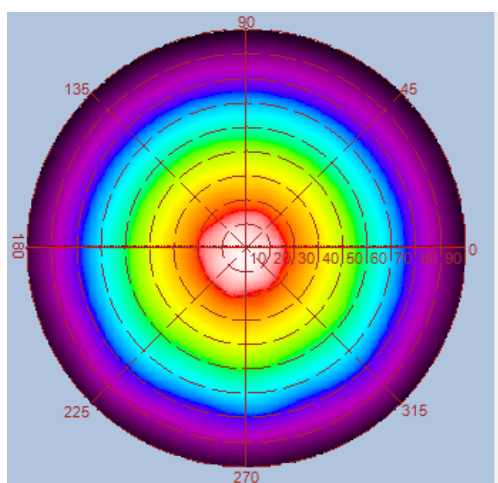
Height	E Avg.	E Max.	Diameter
1.0M	670 Lx	1410 Lx	293 cm
2.0M	167 Lx	354 Lx	587 cm
3.0M	74 Lx	157 Lx	881 cm
4.0M	41 Lx	88 Lx	1174 cm
5.0M	26 Lx	56 Lx	1468 cm





## Luminous Intensity Distribution Diagram

GL-PL0606-V2-CW / CCT :6000K



Height	E Avg.	E Max.	Diameter
1.0M	757 Lx	1589 Lx	293 cm
2.0M	189 Lx	400 Lx	587 cm
3.0M	83 Lx	176 Lx	881 cm
4.0M	46 Lx	99 Lx	1174 cm
5.0M	29 Lx	63 Lx	1468 cm

