

Mizar Series

GL-MR1605WH-V2

GL-MR1605WH-V2AN



※ LED chip : NICHIA

The LED Lamp Advantage:

More energy-efficient than halogen:

LED lamps, very efficacious in converting power into light, may achieve over 70% of power saving as compared with traditional halogen lamps.

Long lifespan:

The averaged lifespan of LED lamps is at least 50 times that of incandescent lamps and at least 10 times that of halogen lamps, eliminating the need for frequent replacements.

Healthy lighting:

Except particular applications such as tanning booths, mosquito killers, and so on, LED lamps for general lighting emit neither ultraviolet (UV) nor infrared (IR) that may harm health.

Environment friendly:

LED lamps do not contain mercury, sodium, or other hazardous chemical elements, possibly necessary for certain traditional light sources and unfriendly to the ecological environment.

No perceptible flickering:

Traditional lamps driven by an AC current with a relatively low frequency may produce perceptible flickering that may lead to eye discomfort or injury while LED lamps driven by a DC current with a relatively high frequency will not.

High luminous efficacy:

The increasingly high luminous efficacy (lm/W) of LED lamps provides more output light (lm) with less input power (W), turning LED lamps into the mainstream in the lighting industry.

Low power consumption:

Under the condition of the same output light, LED lamps consume less input power than traditional lamps, reimbursing you by reducing power bill.

◆ Features & Benefits

- High brightness
- High energy efficiency & low power consumption
- Extremely long operating life
- No Mercury, No UV and IR light radiation
- RoHs compliance
- Low heat generation
- Robust and durable
- Fast electrical response
- Compatible to standard replacement lamps
- Designed with NICHIA chips
- GU 5.3 base for extra retention in lampholder
- Wide range of 50mm types
- 2 years warranty



◆ Specifications

MR1605WH-V2

Type	GL-MR1605WH-V2-WW	GL-MR1605WH-V2-CW
Energy Used	5W	
Rated Life	30,000 Hours	
Input Voltage	12V AC/DC	
CCT (color)	3000K	5000K
Luminous Flux (lm)	250	350
Luminous Efficacy	50	70
CRI	> 80 for warm white; >70 for cool white	
Base	GU5.3	
Dimension	Φ 49.7x45.5mm	
Beam Angle	30° / 50°	

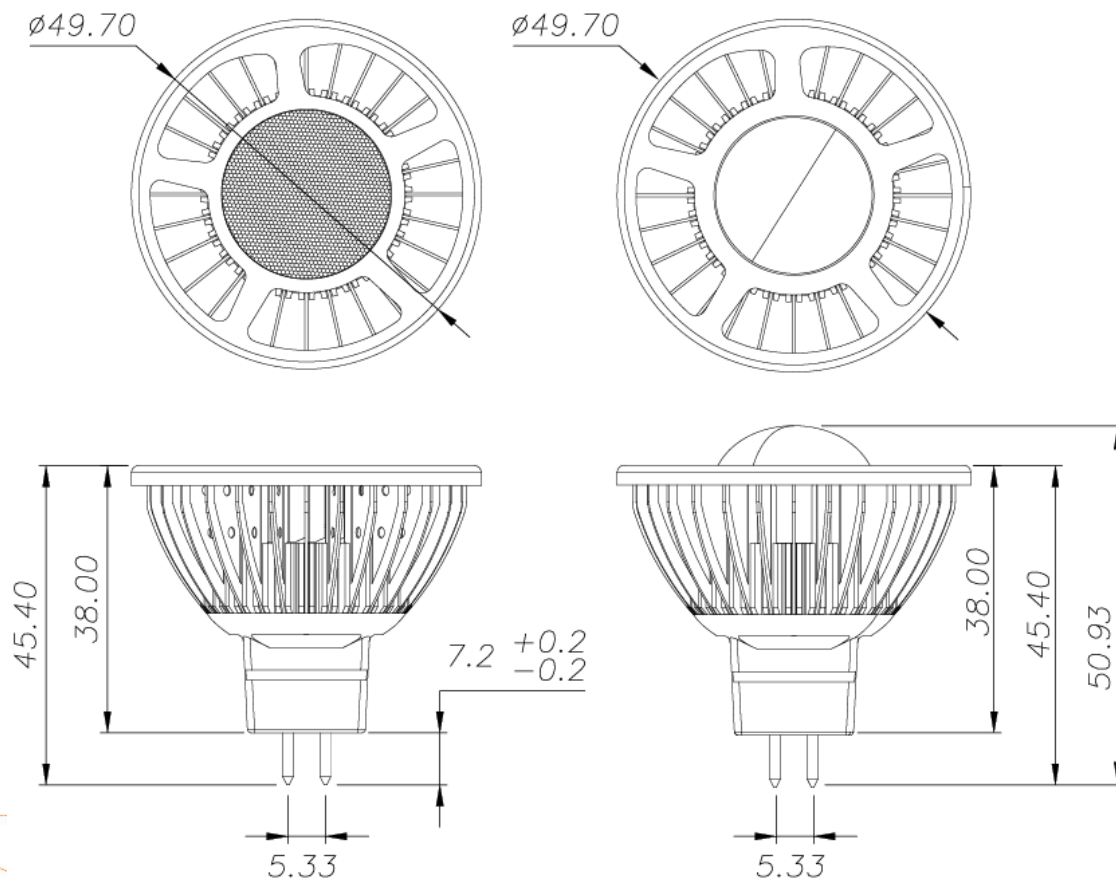
MR1605WH-V2AN : AC-Non-Dimmable

Type	GL-MR1605WH-V2AN-WW	GL-MR1605WH-V2AN-CW
Energy Used	5W	
Rated Life	30,000 Hours	
Input Voltage	100 -240V AC	
CCT(color)	3000K	5000K
Luminous Flux (lm)	250	350
Beam Max CP (cd)	273	357
Luminous Efficacy	50	70
CRI	> 80 for warm white; >70 for cool white	
Base	GU5.3	
Dimension	Φ 49.7x45.5mm	
Beam Angle	Spot - 50°	

◆ **Outline / Dimension**

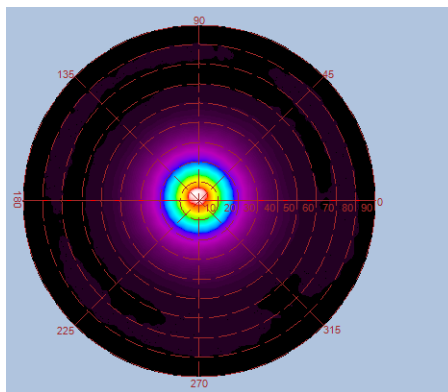
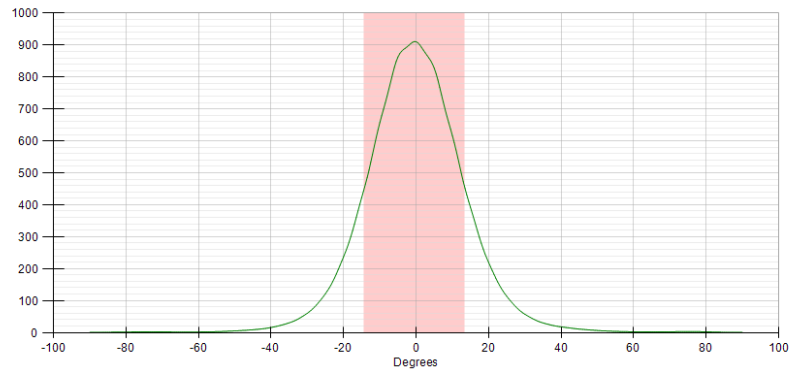
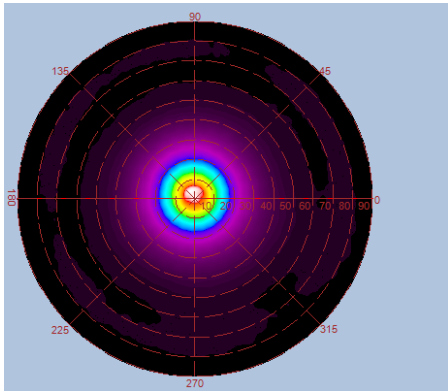
Beam Angle: 30°

Beam Angle: 50°

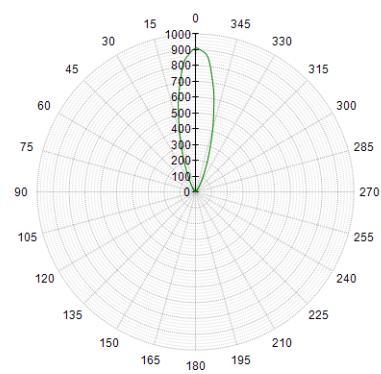


◆ **Luminous Intensity Distribution Diagram**

GL-MR1605WH-V2-30D / CCT : 3000K

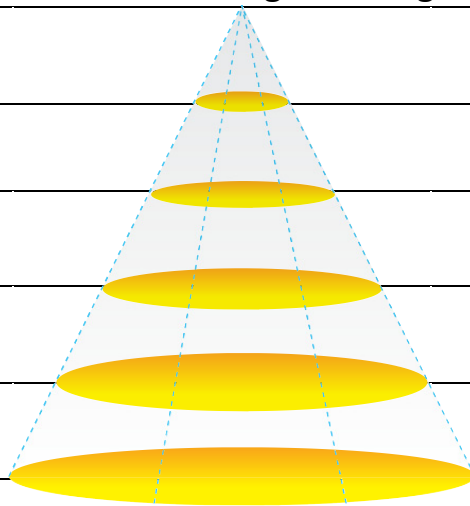


光强度(Candela)



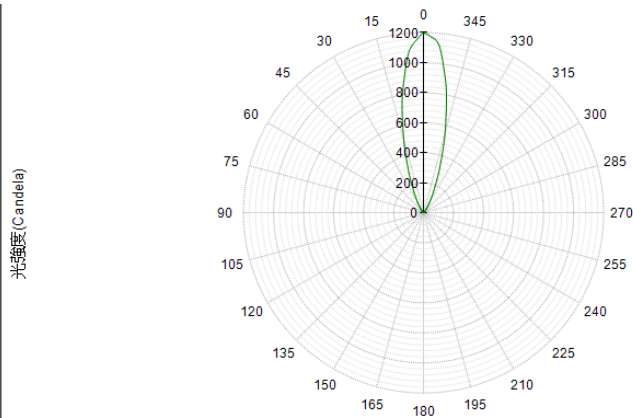
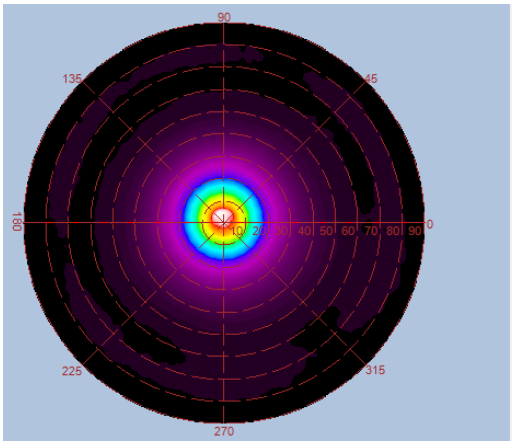
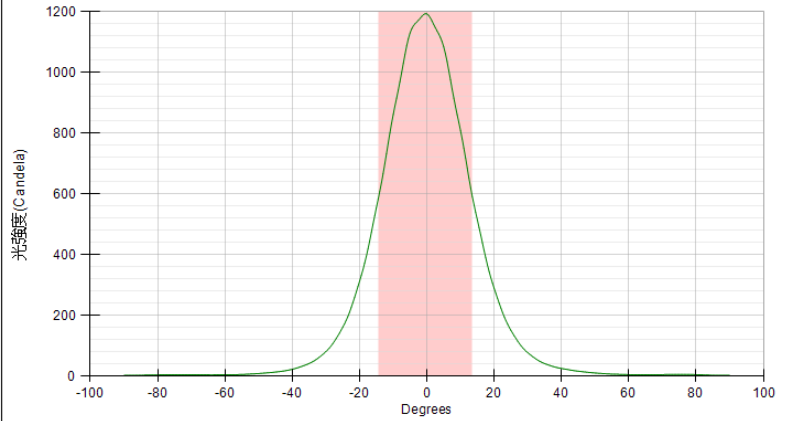
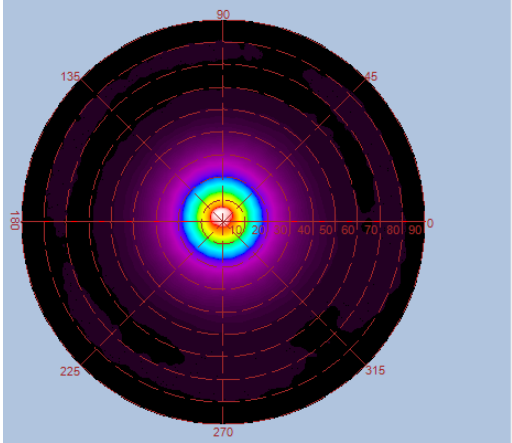
Angle= 28Deg

Height	E Max.	Diameter
1.0M	1037 Lx	53cm
2.0M	259 Lx	106cm
3.0M	115 Lx	159cm
4.0M	65 Lx	212cm
5.0M	41 Lx	265cm



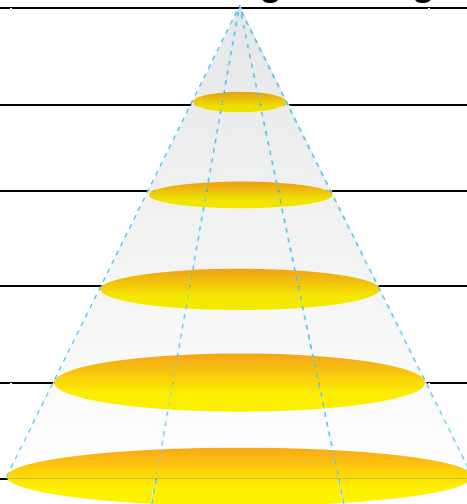
◆ **Luminous Intensity Distribution Diagram**

GL-MR1605WH-V2-30D / CCT : 5000K



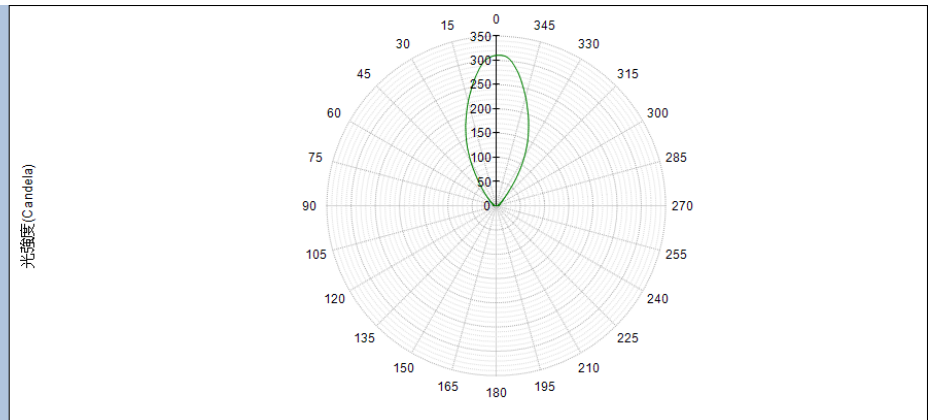
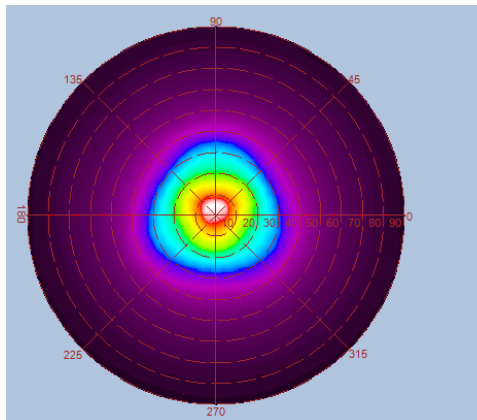
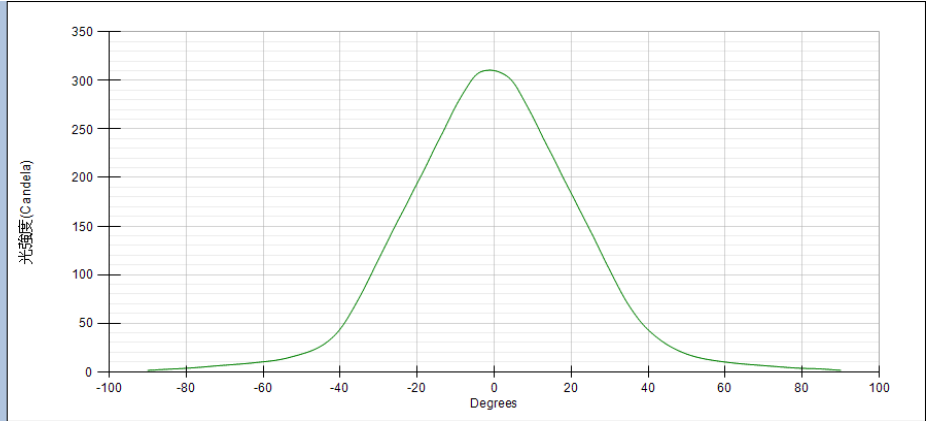
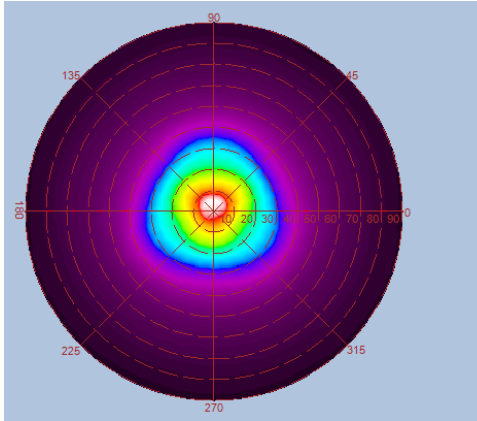
Angle= 28Deg

Height	E Max.	Diameter
1.0M	1359 Lx	56cm
2.0M	339 Lx	112cm
3.0M	151 Lx	168cm
4.0M	85 Lx	224cm
5.0M	54 Lx	280cm



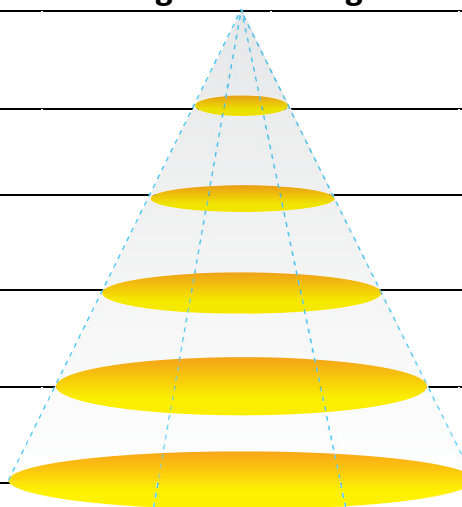
◆ **Luminous Intensity Distribution Diagram**

GL-MR1605WH-V2-50D / CCT : 3000K



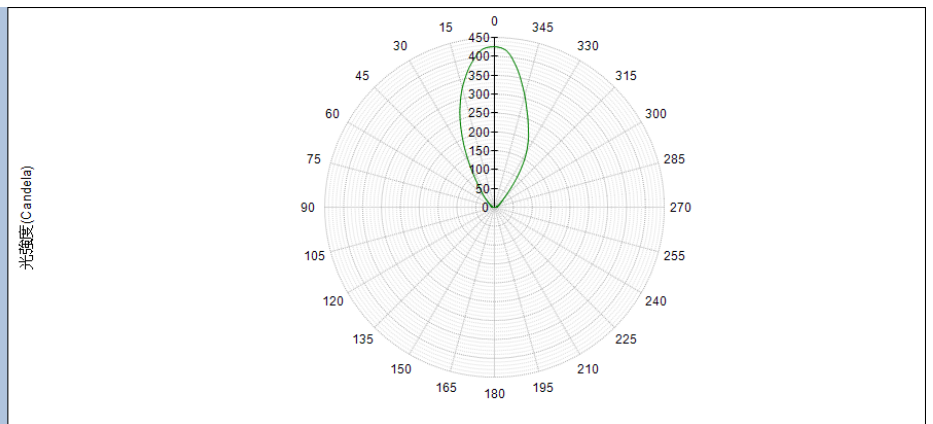
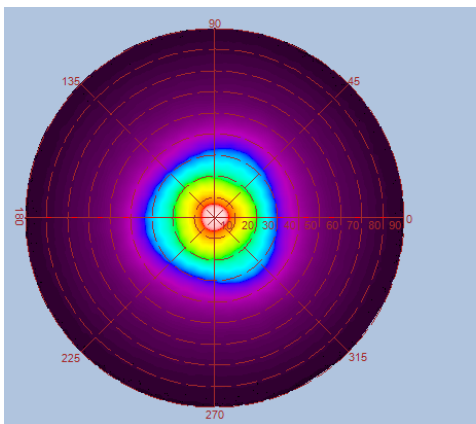
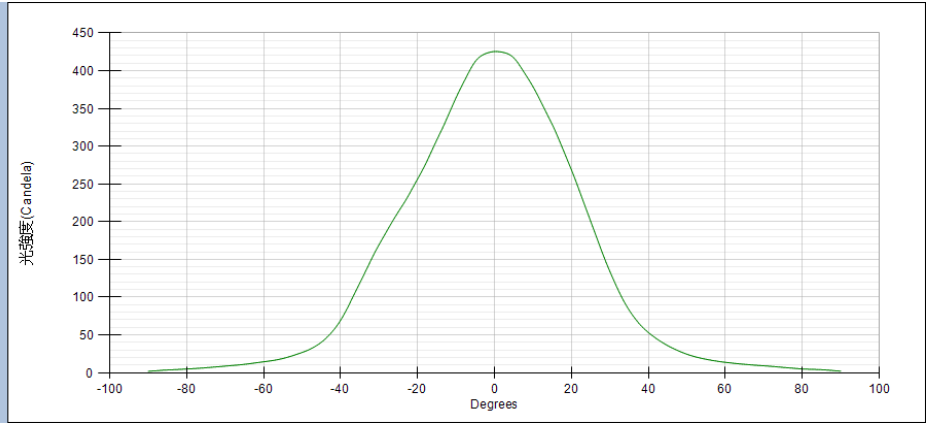
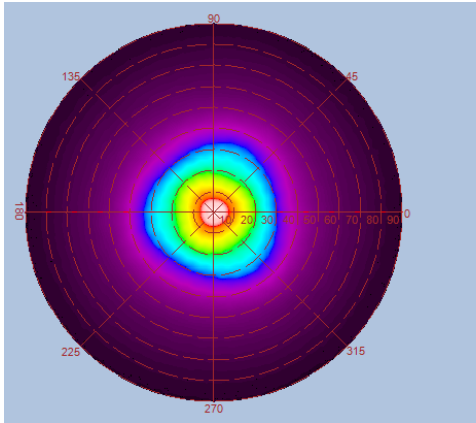
Angle= 50.5 Deg

Height	E Max.	Diameter
1.0M	341 Lx	94 cm
2.0M	85 Lx	189cm
3.0M	38 Lx	283cm
4.0M	21 Lx	377cm
5.0M	14 Lx	472cm



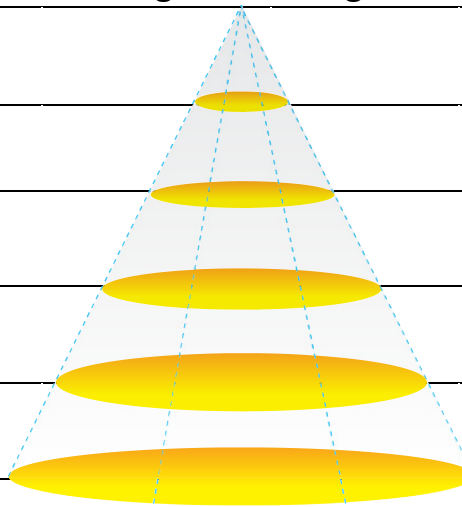
◆ **Luminous Intensity Distribution Diagram**

GL-MR1605WH-V2-50D / CCT : 5000K



Angle= 49.5 Deg

Height	E Max.	Diameter
1.0M	471 Lx	94cm
2.0M	118 Lx	189cm
3.0M	52 Lx	283cm
4.0M	29 Lx	377cm
5.0M	19 Lx	472cm



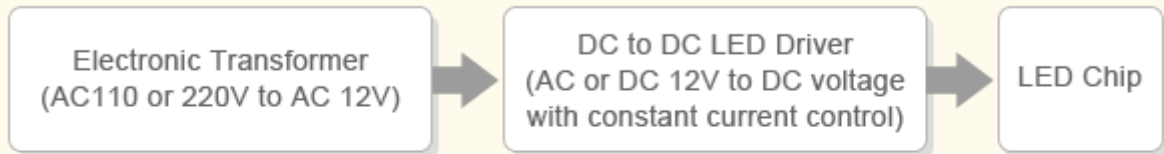
The advantages of the DC-to-DC LED driver in the traditional approach

1. Having high compatibility with more than 90% of AC electronic transformers available in the market
2. Allowing an input voltage 12VAC/DC from an AC electronic transformer, an AC source or a DC source
3. Keeping the output current nearly constant
4. Using Japanese capacitors to prolong lifespan
5. Having over temperature protection to avoid high-temperature operation

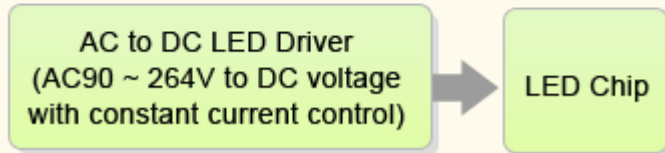
The advantages of bundling MR16 LED luminaries with the GlacialPower AC-to-DC LED driver

1. The AC-to-DC LED driver can accommodate a universal AC input voltage range 90~264Vac.
2. High efficiency and high reliability benefit from the one-stage power conversion.

■ **Traditional**



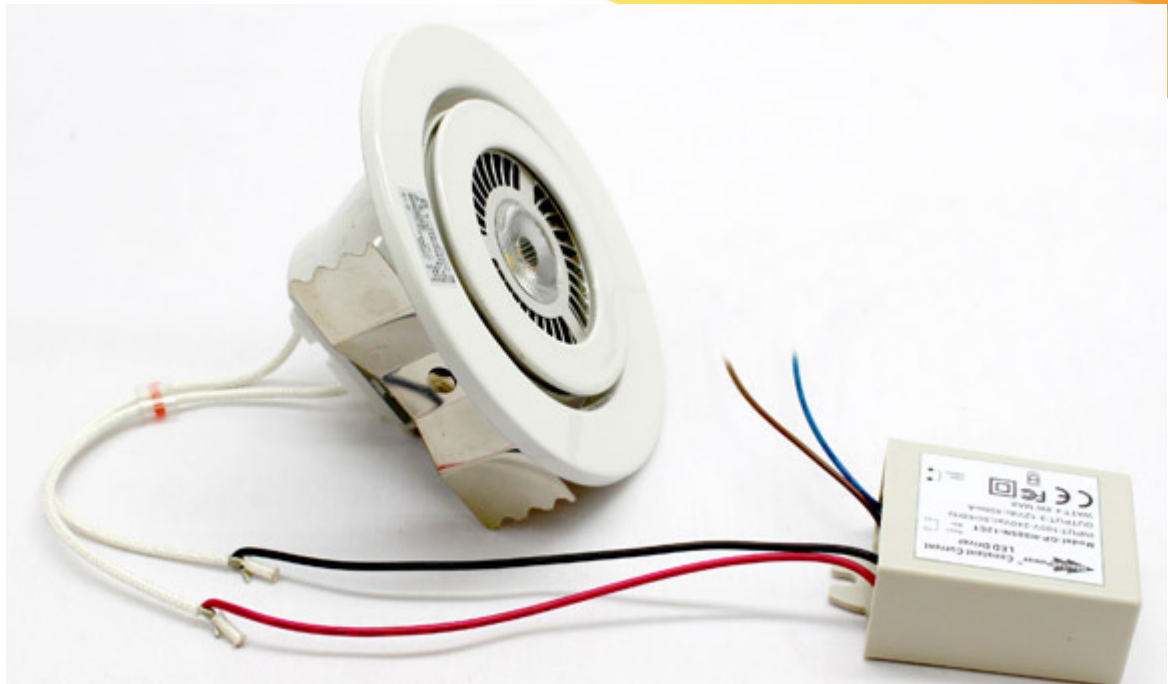
■ **GlacialPower**



3. No compatibility issue is caused and the LED lifetime prolonged by eliminating the need for the AC electronic transformer and the DC-to-DC LED driver in the lighting system.
4. Accredited with the IP67 ingress protection against dust and water, the HS05N series can put up with harsh environments.
5. The AC-to-DC LED driver also complies with the IEC 61347 safety standard.

Model	LED Lamp	Driver
MR1605WH-V2	Built-in DC-DC driver, input 12V AC/DC	
MR1605WH-V2AN	GL-MR1605WH-V2A	GP-HS05N

◆ **MR1605WH-V2A(LED bulb)+HS05N-12C1(External driver)**



Warning: MR1605WH-V2AN is designed for connecting with the GlacialPower HS05N LED driver ONLY, and cannot be connected with other LED drivers or transformers. Improper connections may cause product damage and void your warranty.

◆ **Applications**

Architectural Lighting/ Cabinet Lighting/ Commercial Lighting/ Spot Lighting/ Accent Lighting/ Hallway Lighting

