

Mizar Series GL-MR1605AC



✧ *Nichia LED*

The LED Lamp Advantage:

More energy-efficient than halogen:

LED lamps, very efficacious in converting power into light, may achieve over 70% of power saving as compared with traditional halogen lamps.

Long lifespan:

The averaged lifespan of LED lamps is at least 50 times that of incandescent lamps and at least 10 times that of halogen lamps, eliminating the need for frequent replacements.

Healthy lighting:

Except particular applications such as tanning booths, mosquito killers, and so on, LED lamps for general lighting emit neither ultraviolet (UV) nor infrared (IR) that may harm health.

Environment friendly:

LED lamps do not contain mercury, sodium, or other hazardous chemical elements, possibly necessary for certain traditional light sources and unfriendly to the ecological environment.

No perceptible flickering:

Traditional lamps driven by an AC current with a relatively low frequency may produce perceptible flickering that may lead to eye discomfort or injury while LED lamps driven by a DC current with a relatively high frequency will not.

High luminous efficacy:

The increasingly high luminous efficacy (lm/W) of LED lamps provides more output light (lm) with less input power (W), turning LED lamps into the mainstream in the lighting industry.

Low power consumption:

Under the condition of the same output light, LED lamps consume less input power than traditional lamps, reimbursing you by reducing power bill.

◆ **Features**

- Energy saving and environmentally friendly
- High brightness
- Uses NICHIA LED
- Luminous Efficacy of up to 70
- Efficiency and thermal design minimizes rise in ambient temperature
- Extremely long operating life of 30,000 hours
- RoHS compliant, No Mercury, No IR or UV light radiation
- Extremely durable and robust
- High compatibility
- 2 year manufacturer's warranty

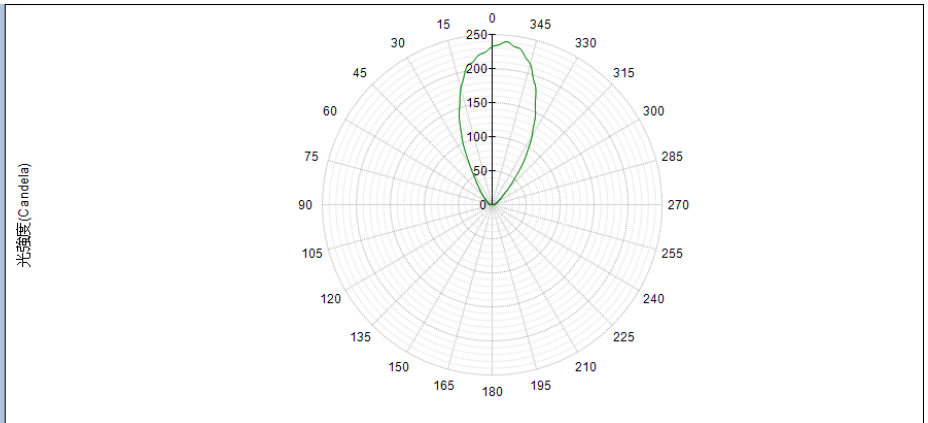
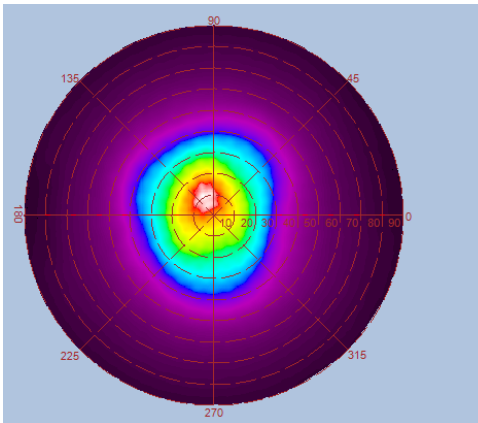
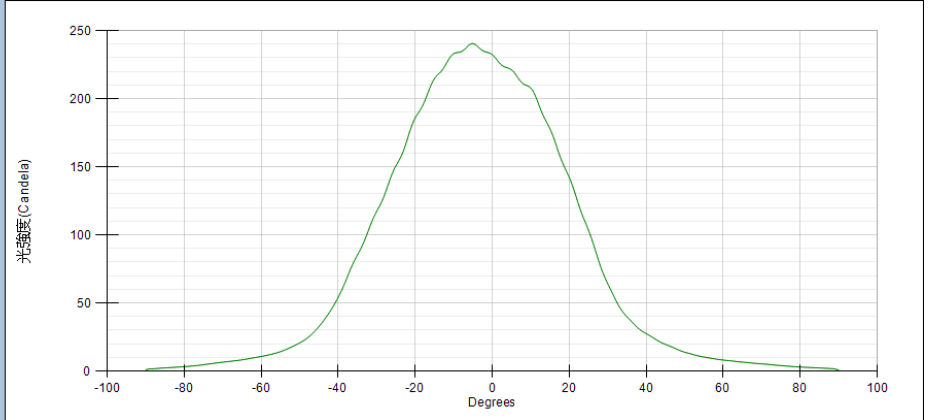
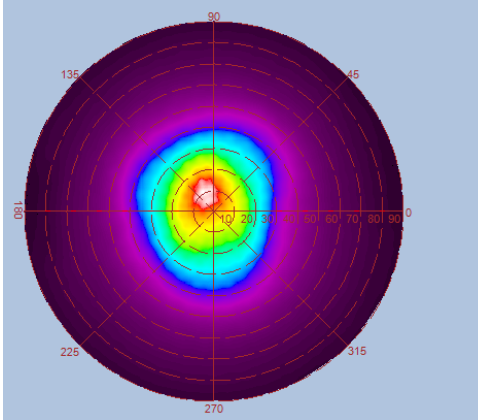


◆ **Specifications**

Type	GL-MR1605AC-WW	GL-MR1605AC-CW
Energy Used	5W	
Rated Life	30,000 Hours	
Input Voltage	100-240V AC	
CCT	3000K	5000K
Luminous Flux (lm)	250lm	350lm
Luminous Efficacy	50lm/W	70lm/W
CRI	80	70
Base	E11 / E14 / E17 / E26 / E27 / GU10 / B22	
Dimension	(E11) Φ49.7 x 61.6mm / (E14) Φ49.7 x 72.6mm / (E17) Φ49.7 x 65.5mm (E26) Φ49.7 x 52.8mm / (E27) Φ49.7 x 55.7mm / (GU10) Φ49.7 x 54.5mm (B22) Φ49.7 x 54.7mm	
Beam Angle	Spot - 50°	

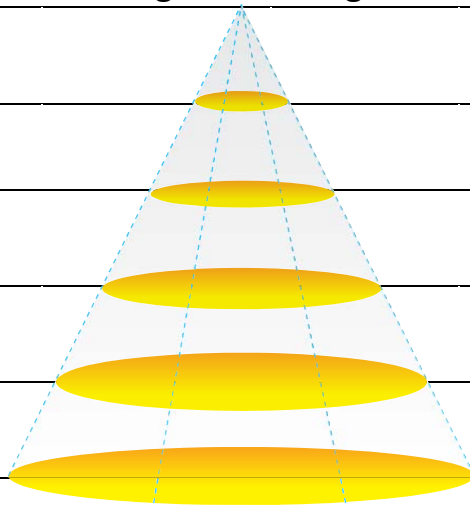
◆ **Luminous Intensity Distribution Diagram**

GL-MR1605AC / CCT : 3000K



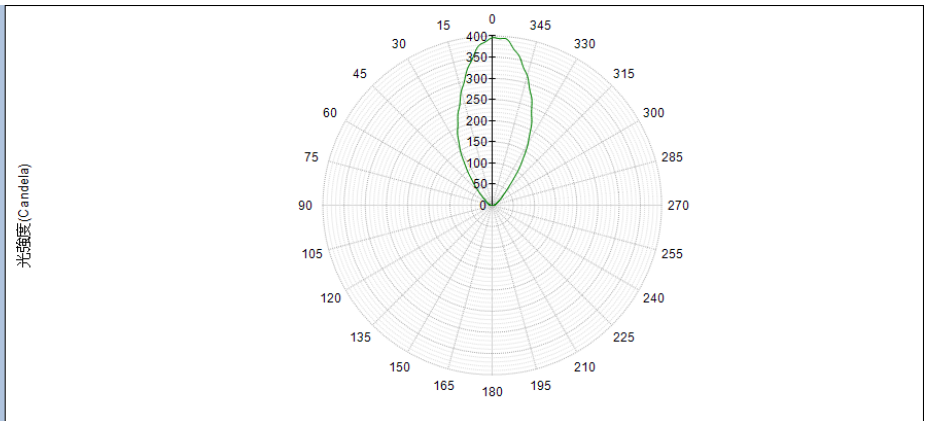
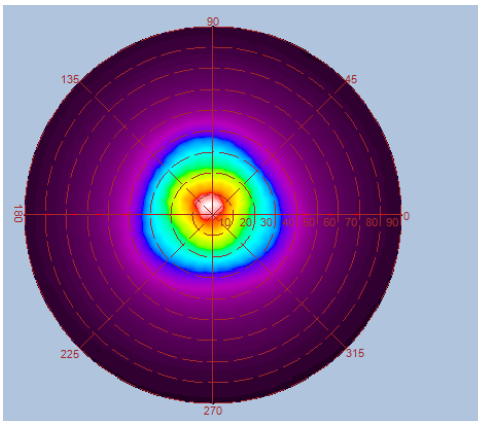
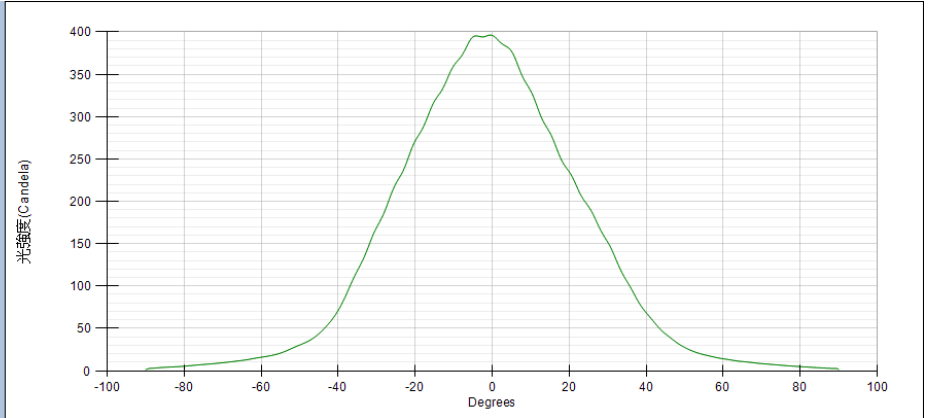
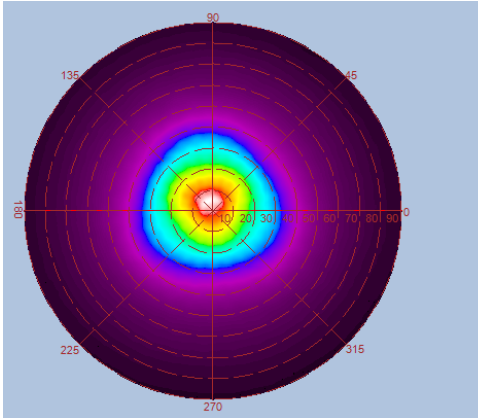
Angle= 50.5 Deg

Height	E Avg.	E Max.	Diameter
1.0M	235 Lx	341 Lx	94cm
2.0M	59 Lx	85 Lx	189cm
3.0M	26 Lx	38 Lx	283cm
4.0M	15 Lx	21 Lx	377cm
5.0M	9 Lx	14 Lx	472cm



◆ **Luminous Intensity Distribution Diagram**

GL-MR1605AC / CCT : 5000K



Angle= 49.5 Deg

Height	E Avg.	E Max.	Diameter
1.0M	327 Lx	471 Lx	94cm
2.0M	82 Lx	118 Lx	189cm
3.0M	36 Lx	52 Lx	283cm
4.0M	20 Lx	29 Lx	377cm
5.0M	13 Lx	19 Lx	472cm

