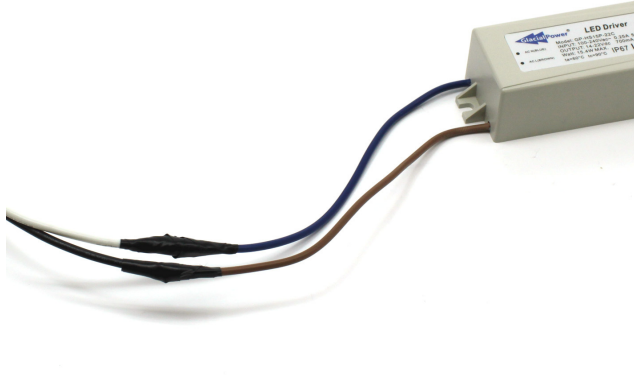
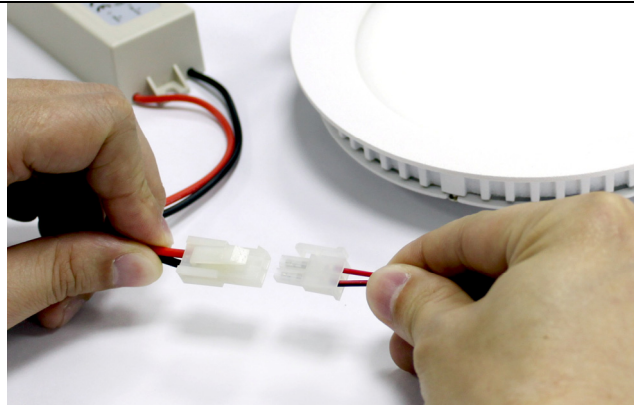
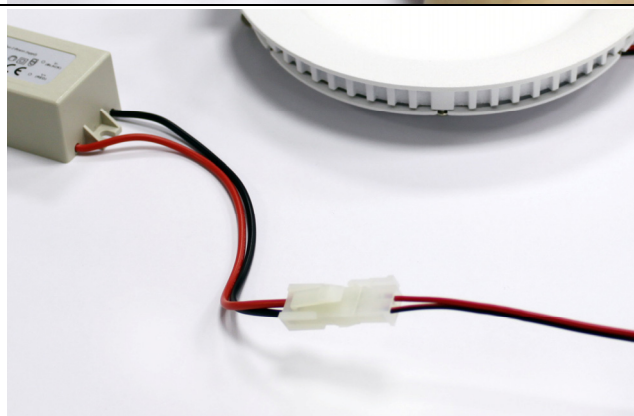

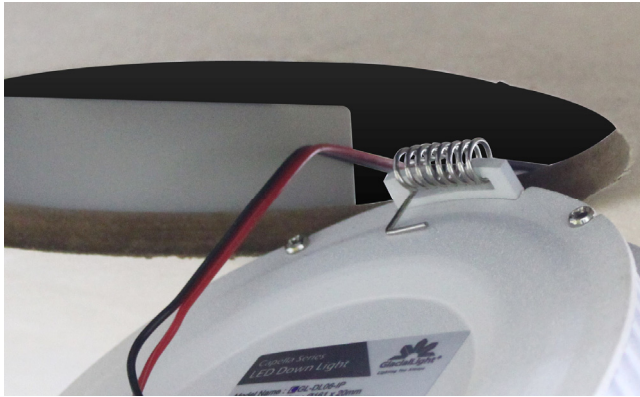
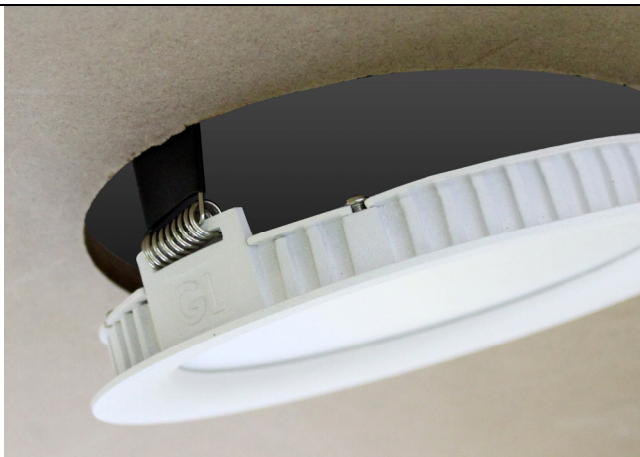


## GL-DL06-IP Series LED Down Light Installation Guidelines

Photograph	Description
	<p>Caution: Turn off the main power before installation to prevent electric shock.</p> <p>Connect the driver and power cord.</p>
	<p>Connect the DC power cord connector to the LED driver.</p> <p>Caution: Do not connect the LED to any other non-compatible drivers. This may cause damage to the product.</p>
	<p>Make sure the DC power cable connector is securely connected.</p>
	<p>Carve a hole according to the dimension of the LED light on the ceiling.</p>



Carefully place the LED driver through the hole and securely hook the spring frames onto the edge of the carved hole.



Pull the other spring frame and hook it to the other side of the hole.



The LED light should flushly fit into the ceiling without any gaps.



Turn on the power, and the LED panel light will light up.

# User Manual

## 1. Instructions

To ease the installation process and ensure the optimal performance of the product, carry out the installation procedure in compliance with the following safety regulations.

- Unpack carefully and ensure there is no product damage during shipping. Should the product be found damaged during shipping, please return it to your supplier.
- All the electrical wiring necessary for the proper installation of the LED down light is supposed to be conducted by qualified personnel to prevent electric shock or product damage.

In case of a malfunction, turn off the power source immediately. Never try to repair the LED down light by yourself which may cause serious damage and void your warranty. Instead, contact your local dealer for technical assistance.

- For indoor or sheltered outdoor ceiling lighting applications. Waterproof (IP54)
- Please recycle the package.

## 2. Lamp

- Never touch the luminaire when it turns on or gets hot.
- Unless otherwise specified, never use LED luminaires in humid environments.
- Appropriate ambient temperature: -20 to 40°C

## 3. Troubleshooting

- One of the following problems may appear while you use the LED lamp:

- ◆ No light:

Check whether your LED lamp and all other accessories are properly fitted into the fixture adequately connected to the specified power source.

- Fixture Cleaning

To optimize the light output, we recommend that you periodically clean the external diffuser. Only use a dry soft cloth, a dust brush or a vacuum cleaner and never use any liquid chemical cleaner or water to clean the lamp.

Please refer to [www.GlacialLight.com](http://www.GlacialLight.com) for the complete installation manual.