



## Features

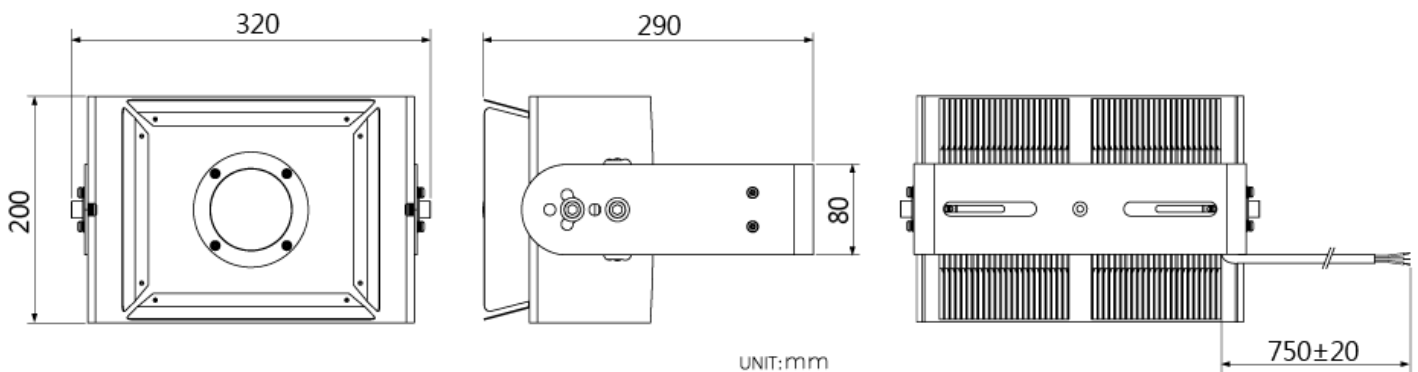
- High system efficacy up to 124 lm/W.
- 23000 lumen output for flood lighting.
- IP66 rated rugged for outdoor use.
- 3-in-1 dimming functions available.
- 70 degree lens and 120 degree lens are available.
- Outdoor-ready 360 degree rotating stainless steel mounting bracket.
- Corrosion-resistant aluminum outdoor stake light bracket available.



## Specifications

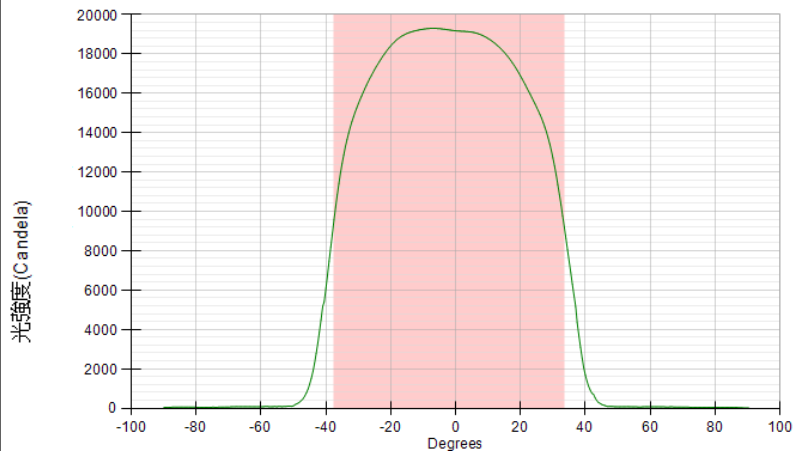
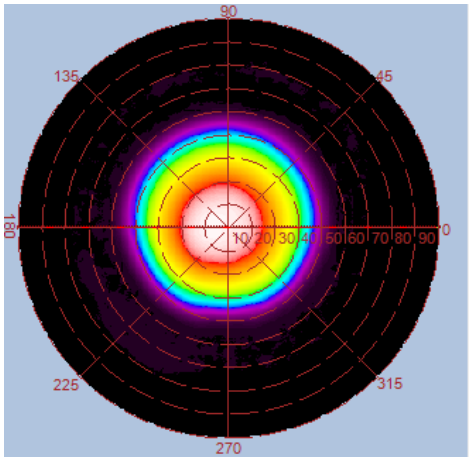
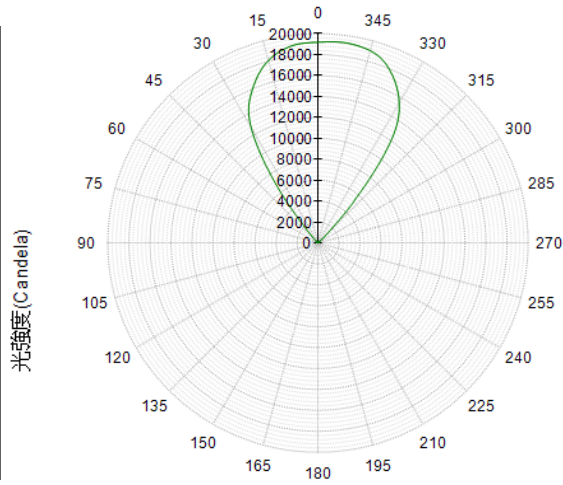
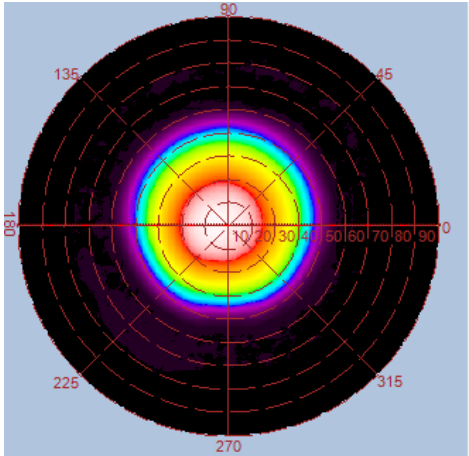
Type	GL-FL190DA-WW	GL- FL190DA-NW	GL- FL190DA-CW
Energy Used	185W		
Rated Life	30,000 Hours		
Input Voltage	100-240V AC Support 277V AC for North America only *(Note 1)		
Power Factor (PF)	0.98 at 120V AC, 0.96 at 240V AC		
CCT (color)	3000K	4000K	5000K
Luminous Flux	21400 lm	22200 lm	23000 lm
System Efficacy	116 lm/W	120 lm/W	124 lm/W
CRI (Minimum)	80	80	80
Beam Angle	70° / 120°		
Dimension	Adjustable height L 320 x W 200 x H 290 ~ 355 mm (With Lampshade)		
IP Rating	IP66		
Operation Temperature	-40°C ~ +50°C *(Note 2)		
Bundled Driver	GP-LS240P-60CA-1E (Driver Output : Constant Current 3.2A, 30~60Vdc)		
Net Weight	6.4 kg (With Lampshade)		
*Note 1 : Input Voltage Range (90-295 VAC)			
*Note 2 : -40°C ~ -20°C (Support for 200-240V AC Input Voltage)			

## Outline / Dimension

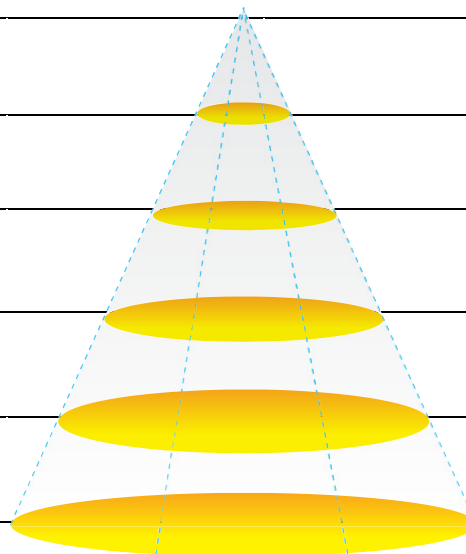


## Luminous Intensity Distribution Diagram

GL-FL190DA-WW-70D / CCT : 3000K

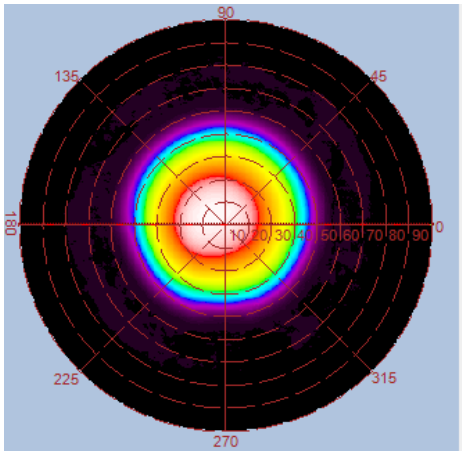


Height	E Avg.	E Max.	Diameter
1.0M	14463 Lx	20660 Lx	142 cm
2.0M	3532 Lx	4970 Lx	285 cm
3.0M	1558 Lx	2177 Lx	427 cm
4.0M	873 Lx	1215 Lx	570 cm
5.0M	557 Lx	772 Lx	713 cm

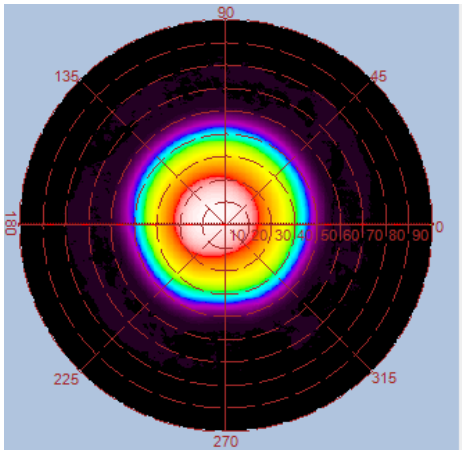
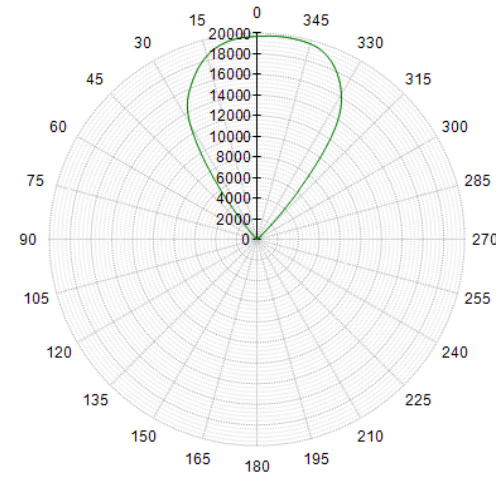


## Luminous Intensity Distribution Diagram

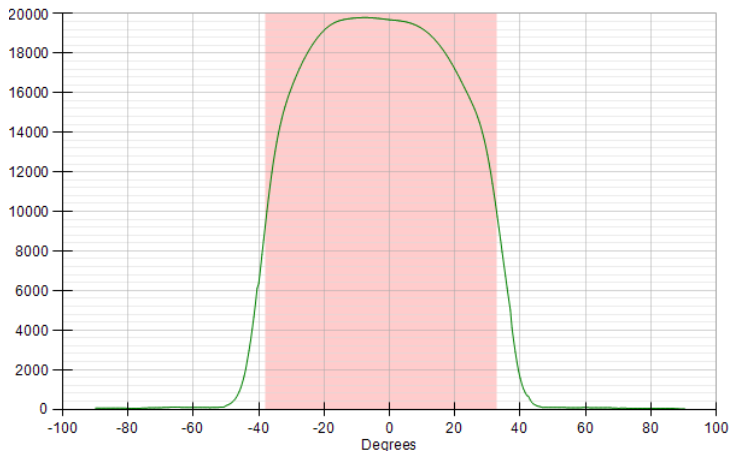
GL-FL190DA-NW-70D / CCT : 4000K



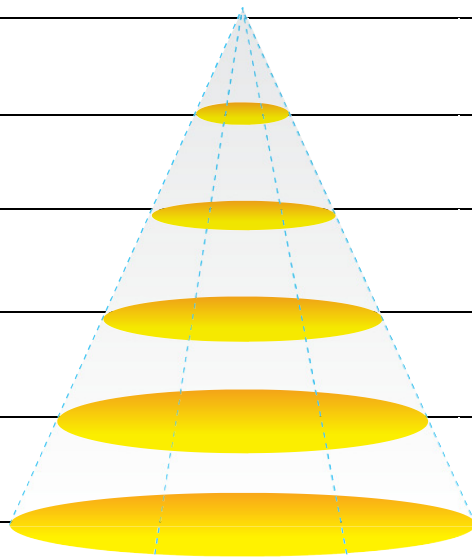
光強度(Candela)



光強度(Candela)

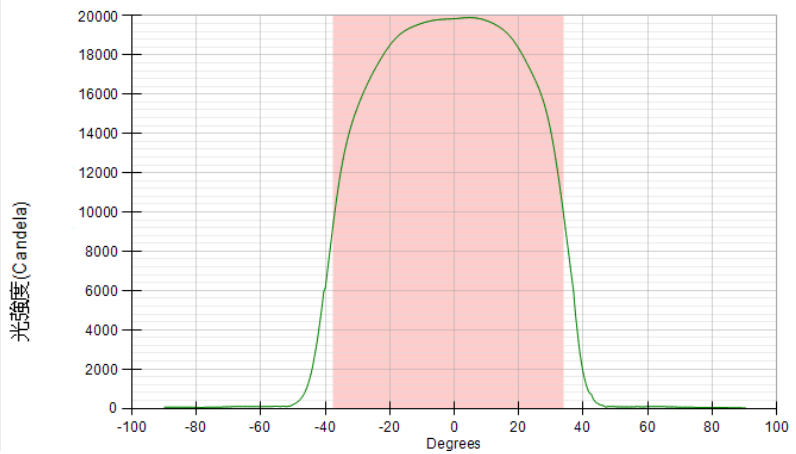
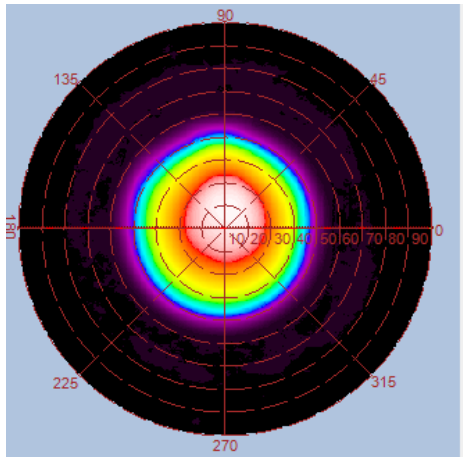
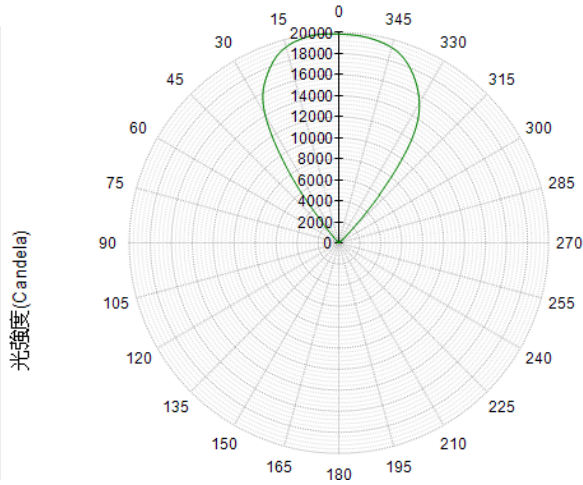
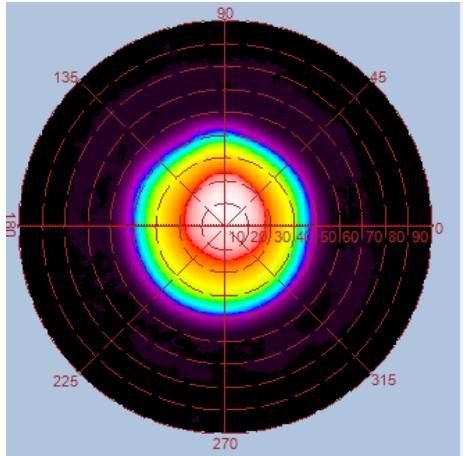


Height	E Avg.	E Max.	Diameter
1.0M	14881 Lx	21282 Lx	142 cm
2.0M	3635 Lx	5083 Lx	285 cm
3.0M	1601 Lx	2234 Lx	427 cm
4.0M	899 Lx	1241 Lx	570 cm
5.0M	572 Lx	791 Lx	713 cm

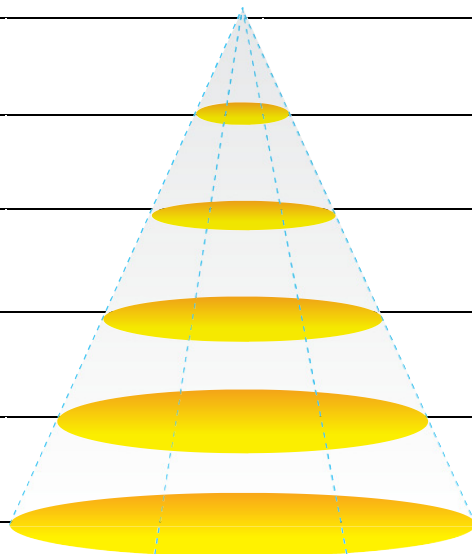


## Luminous Intensity Distribution Diagram

GL-FL190DA -CW-70D / CCT : 5000K

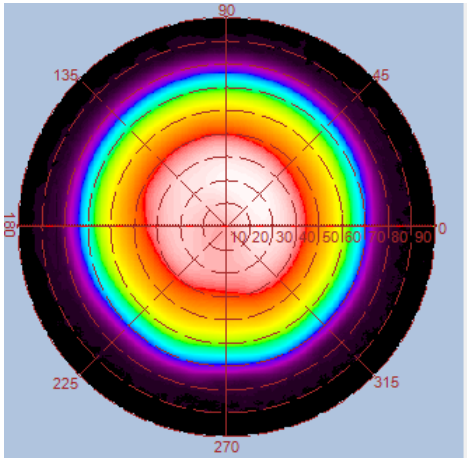


Height	E Avg.	E Max.	Diameter
1.0M	15241 Lx	22443 Lx	143 cm
2.0M	3691 Lx	5226 Lx	287 cm
3.0M	1619 Lx	2260 Lx	431 cm
4.0M	907 Lx	1263 Lx	575 cm
5.0M	579 Lx	806 Lx	719 cm

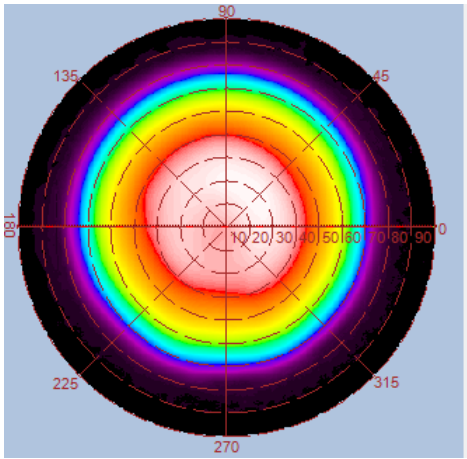
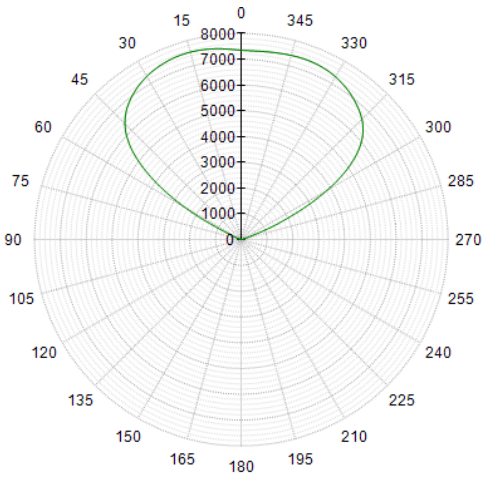


## Luminous Intensity Distribution Diagram

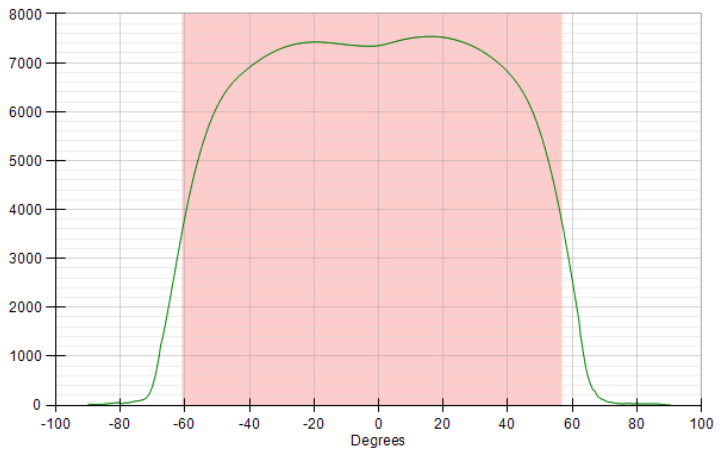
GL-FL190DA-WW-120D / CCT : 3000K



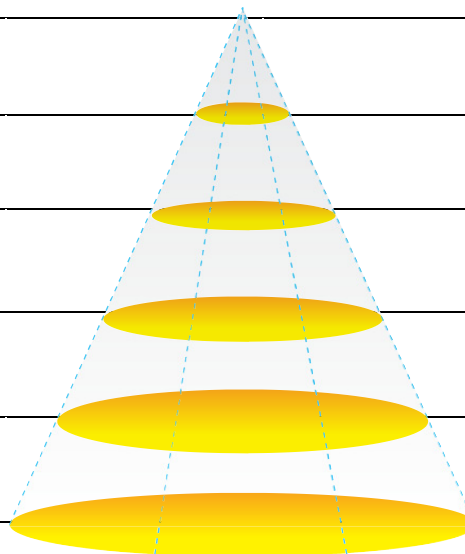
光強度(Candela)



光強度(Candela)

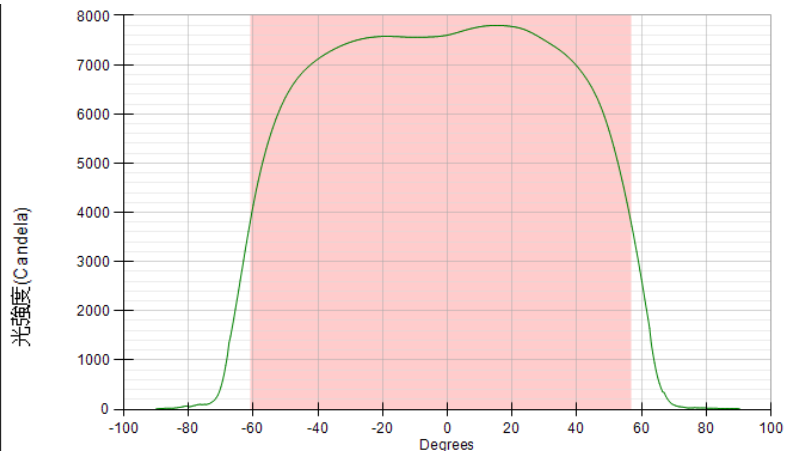
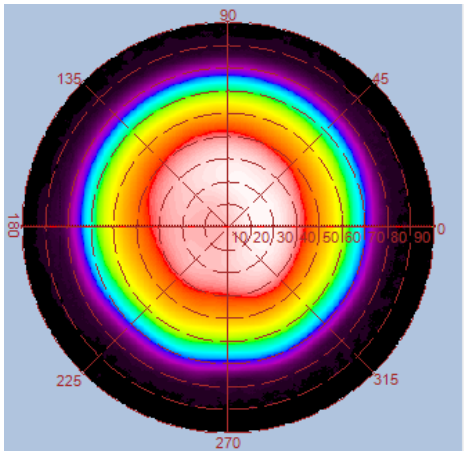
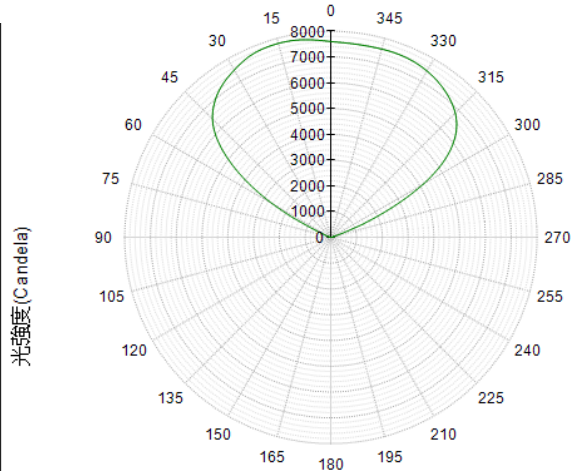
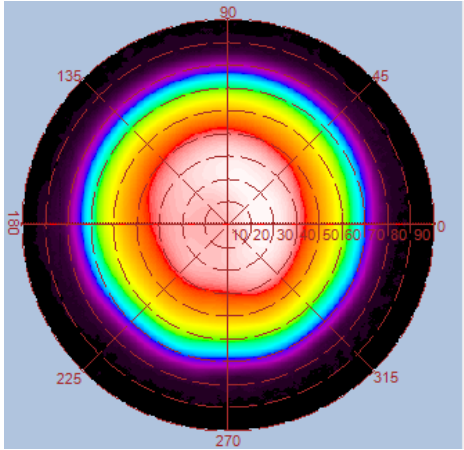


Height	E Avg.	E Max.	Diameter
1.0M	3622 Lx	7666 Lx	332 cm
2.0M	890 Lx	1856 Lx	665 cm
3.0M	393 Lx	815 Lx	998 cm
4.0M	220 Lx	454 Lx	1331 cm
5.0M	140 Lx	291 Lx	1664 cm

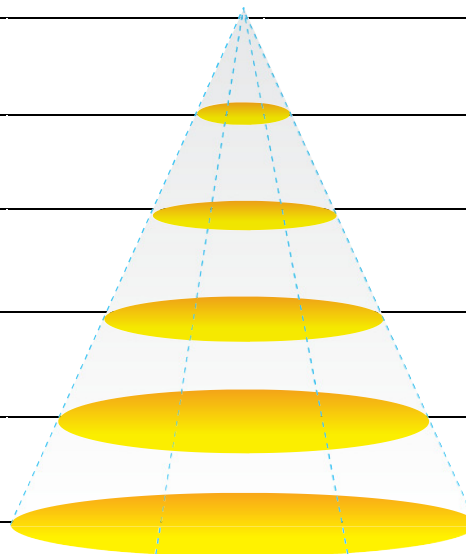


## Luminous Intensity Distribution Diagram

GL-FL190DA-NW-120D / CCT : 4000K

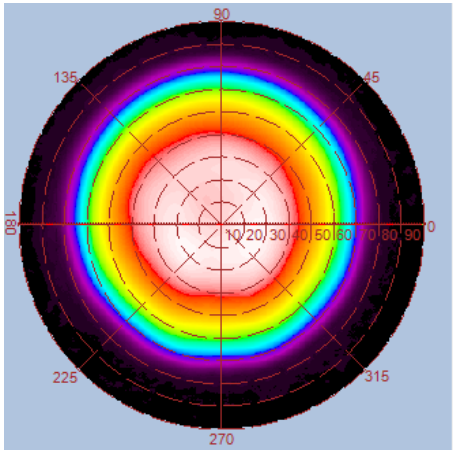


Height	E Avg.	E Max.	Diameter
1.0M	3727 Lx	7915 Lx	332 cm
2.0M	916 Lx	1918 Lx	665 cm
3.0M	405 Lx	848 Lx	998 cm
4.0M	472 Lx	226 Lx	1331 cm
5.0M	144 Lx	301 Lx	1664 cm

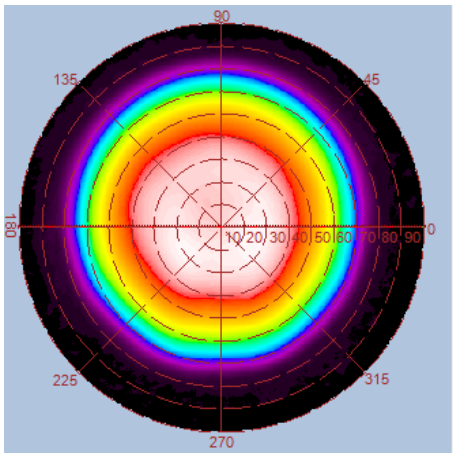
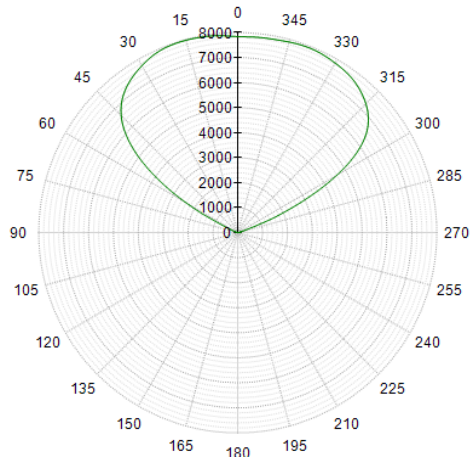


## Luminous Intensity Distribution Diagram

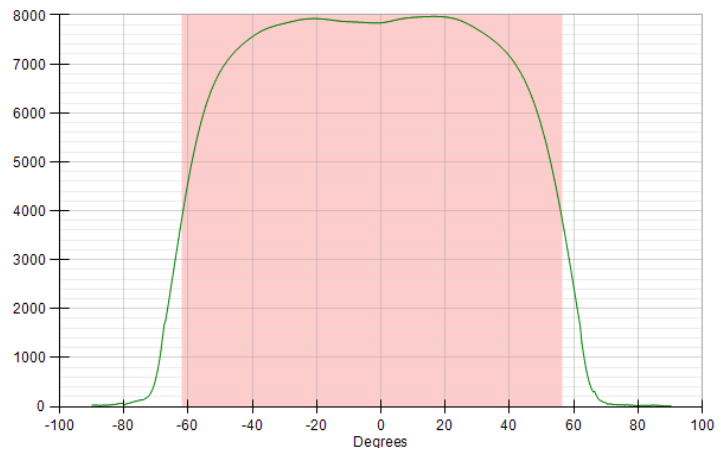
GL-FL190DA-CW-120D / CCT : 5000K



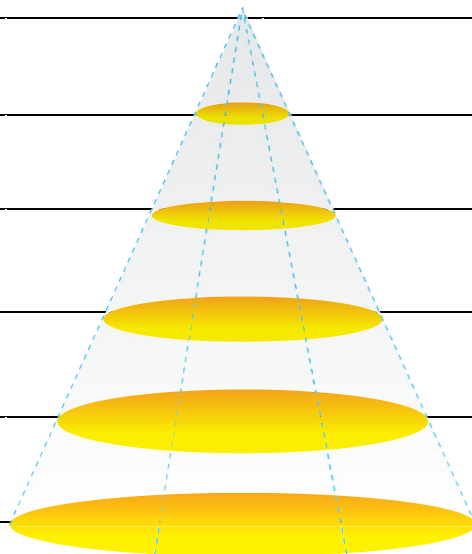
光強度(Candela)



光強度(Candela)

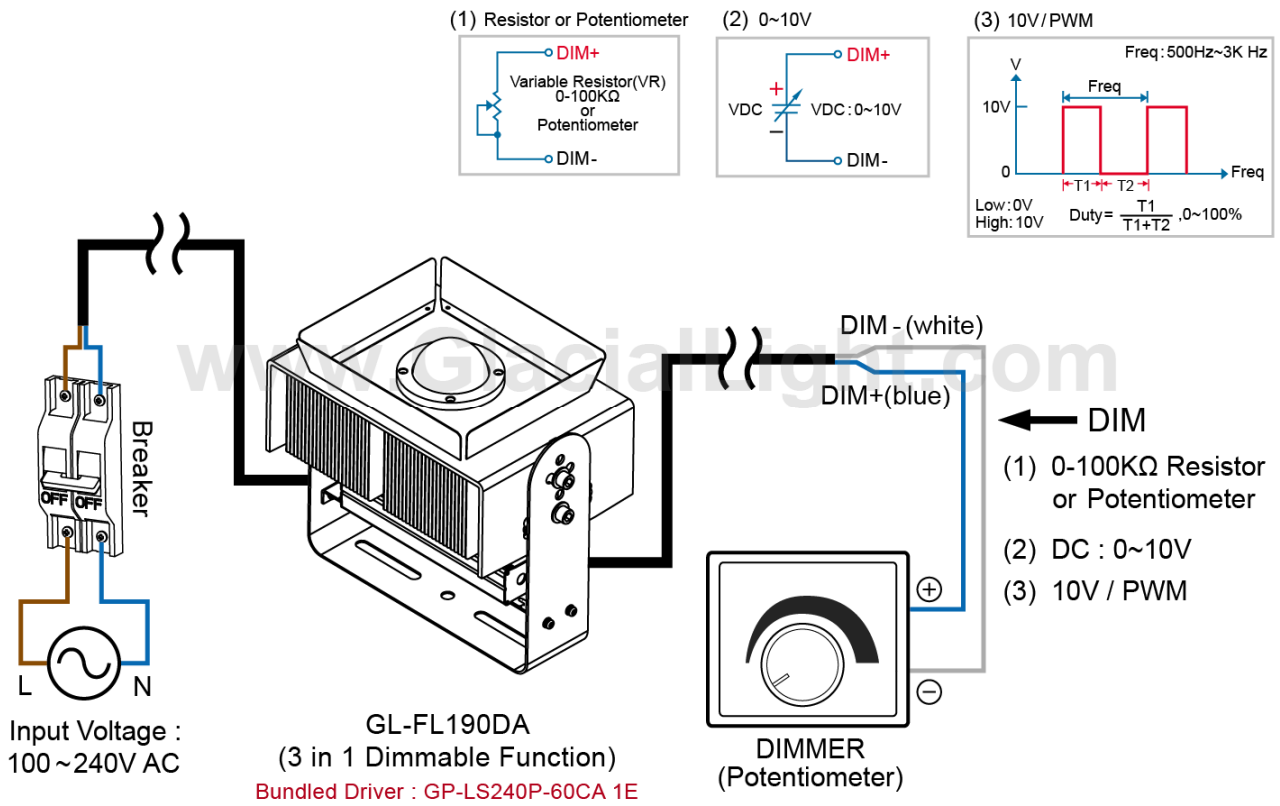


Height	E Avg.	E Max.	Diameter
1.0M	3827 Lx	8120 Lx	336 cm
2.0M	941 Lx	1968 Lx	672 cm
3.0M	416 Lx	868 Lx	10.08 cm
4.0M	233 Lx	487 Lx	1344 cm
5.0M	148 Lx	309 Lx	1680 cm

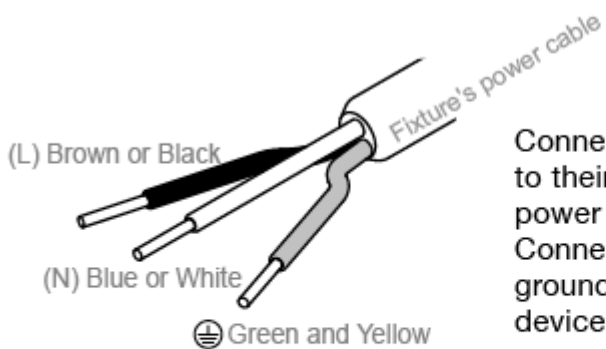




## 3-in-1 Dimming Solution



## CAUTIONS



Connect the fixture's power cables to their corresponding colors of the power source and entwine together. Connect the grounding line to the grounding screw of the grounding devices.



Grounding line should be fixed perpetually and not allow to disconnect.

## Gallery



GlacialPower LED Driver inside



LED Driver  
GP-LS240P-60CA 1E