



Features

- Indoor use
- High power efficiency > 80%
- High luminous efficiency LEDs
- No UV or IR radiation
- Cool light minimizes rise in ambient temperature
- Energy saving and environmentally friendly
- Slim, compact and fashionable design
- CE and FCC certifications
- Bundled driver with active PFC and OTP/OVP/SCP functions
- Passed IEC 60598-1(2008) 、 IEC 60695-2-11 850°C glow wire test (optional).



Specifications (Non-dimmable)

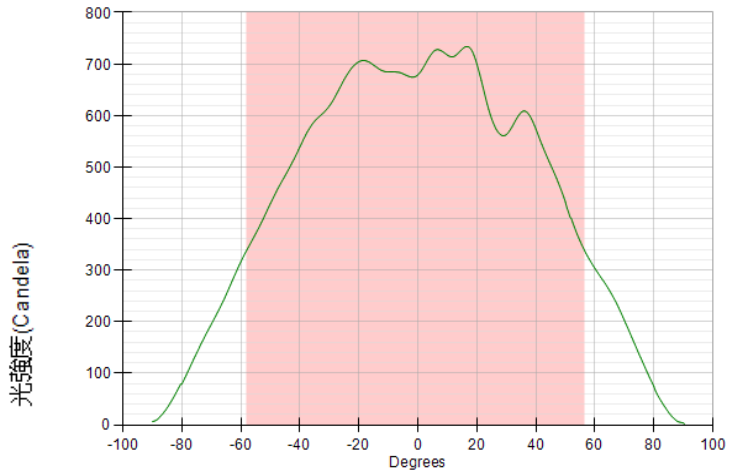
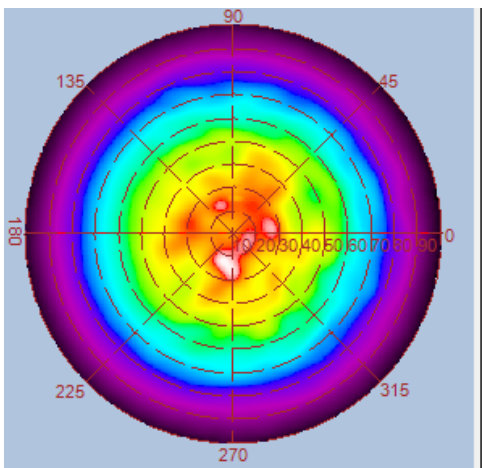
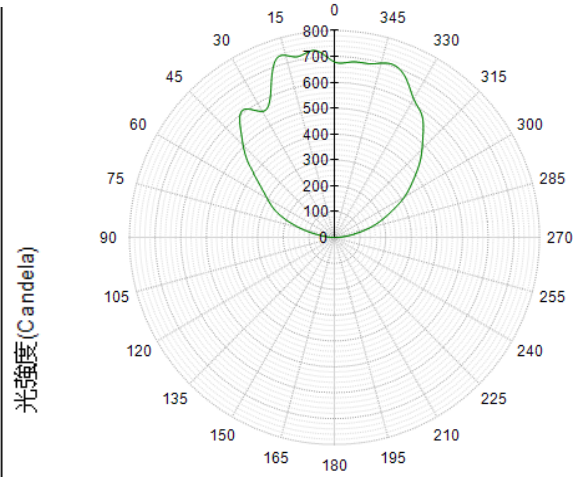
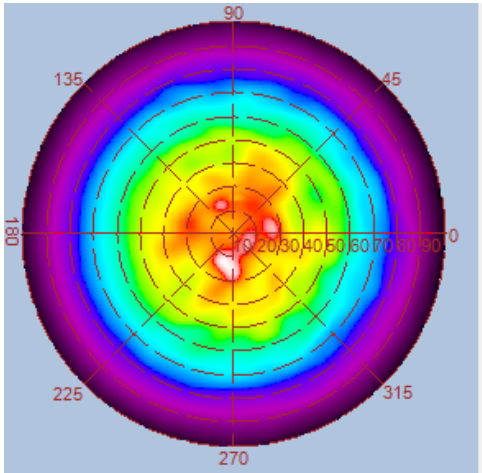
Type	GL-DL10-WW	GL-DL10-NW	GL-DL10-CW
Energy Used	24 W		
Rated Life	30,000 Hours		
Input Voltage	100-240V AC Driver with CUL Certificate Support 277V AC for North America only		
Power Factor (PF)	0.9 at 120V AC, 0.85 at 240V AC		
CCT (color)	3000K	4000K	6000K
Luminous Flux	2080 lm	2200 lm	2300 lm
System Efficacy	87 lm/W	92 lm/W	96 lm/W
CRI (Minimum)	80	80	80
Beam Angle	110°		
Dimension	Φ 300 x 13 mm		
IP Rating	IP40		
Operation Temperature	-20°C ~ +40°C		
Bundled Driver	GP-HS25P-36C (Driver Output : Constant Current 700mA, 21~36V)		
Net Weight	1 kg (with driver)		
Package	10 Boxes / Carton		
Fixture Hole	Φ 285 mm		

Specifications (DC dimmable : 1-10V/PWM/Resistor)

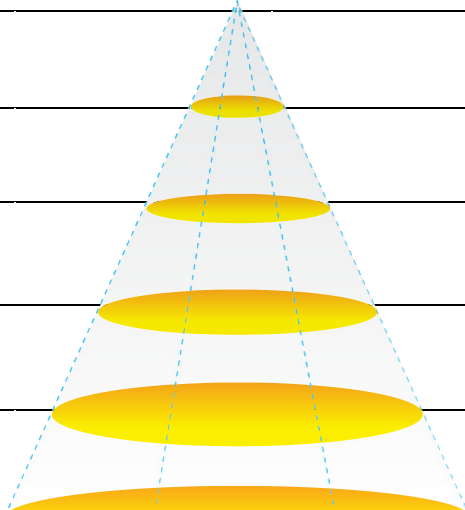
Type	GL-DL10DA-WW	GL-DL10DA-NW	GL-DL10DA-CW
Energy Used	25.5 W		
Rated Life	30,000 Hours		
Input Voltage	100-240V AC Driver with CUL Certificate Support 277V AC for North America only		
Input Voltage	100-240V AC		
Power Factor (PF)	0.9 at 120V AC, 0.85 at 240V AC without dimmer		
CCT (color)	3000K	4000K	6000K
Luminous Flux	2080 lm	2200 lm	2300 lm
System Efficacy	82 lm/W	86 lm/W	90 lm/W
CRI (Minimum)	80	80	80
Beam Angle	110°		
Dimension	Φ 300 x 13 mm		
IP Rating	IP40		
Operation Temperature	-20°C ~ +40°C		
Bundled Driver	GP-HS26P-36CA (Driver Output : Constant Current 700mA, 24~36V)		
Net Weight	1.1 kg (with driver)		
Package	10 Boxes / Carton		
Fixture Hole	Φ 285 mm		

Luminous Intensity Distribution Diagram

GL-DL10-WW/ CCT: 3000K



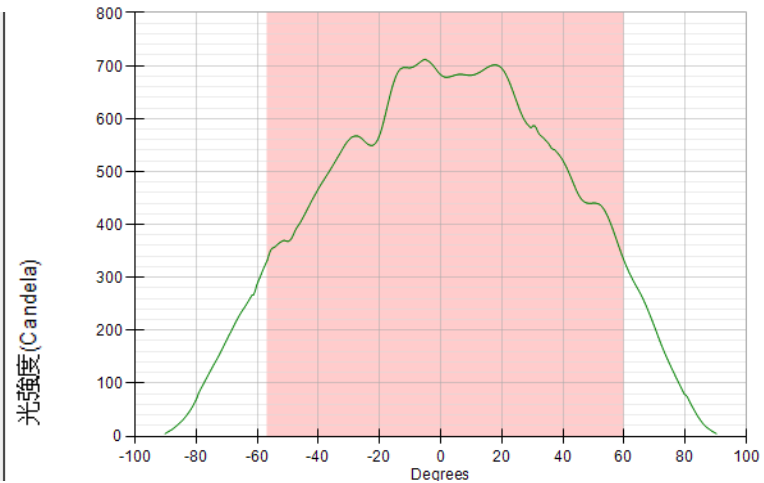
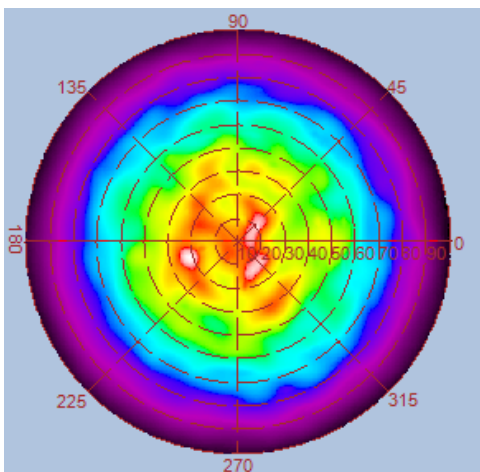
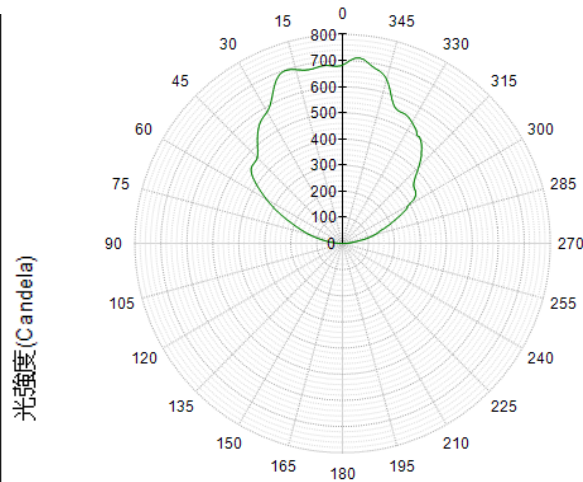
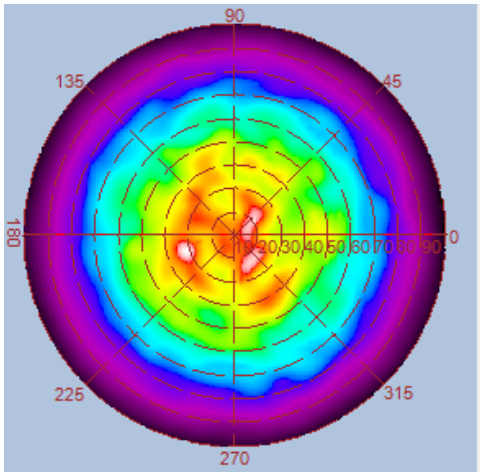
Height	E Avg.	E Max.	Diameter
1.0M	342 Lx	758 Lx	310 cm
2.0M	82 Lx	178 Lx	621 cm
3.0M	36 Lx	78 Lx	932 cm
4.0M	20 Lx	43 Lx	1243 cm
5.0M	13 Lx	27 Lx	1554 cm



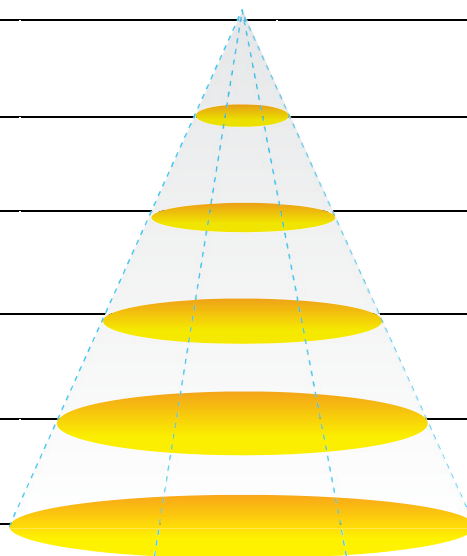
A diagram showing a light cone with horizontal cross-sections at the heights specified in the table. The cross-sections are yellow ellipses that increase in size as the height increases.

Luminous Intensity Distribution Diagram

GL-DL10-NW/ CCT: 4000K

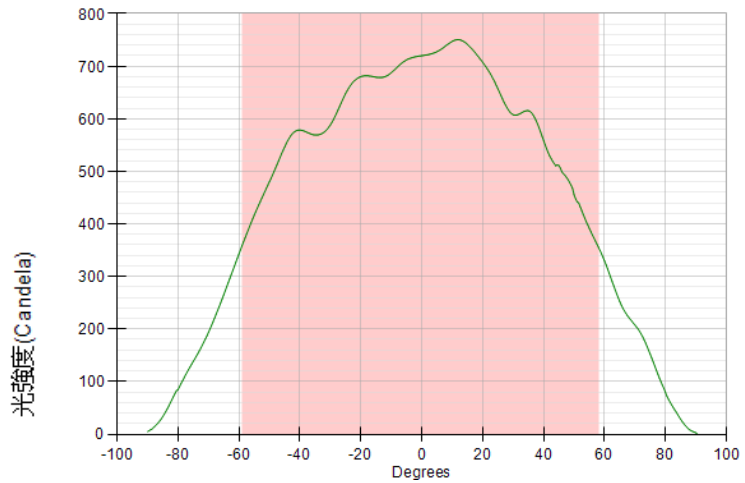
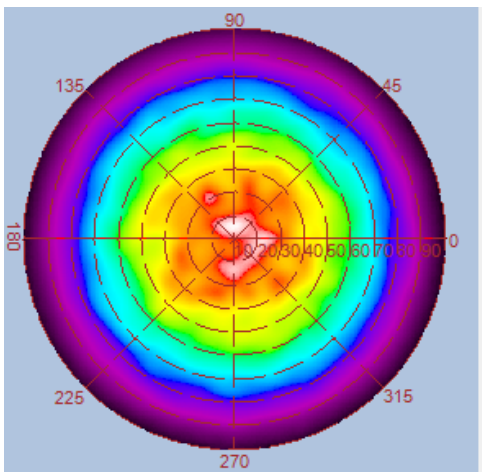
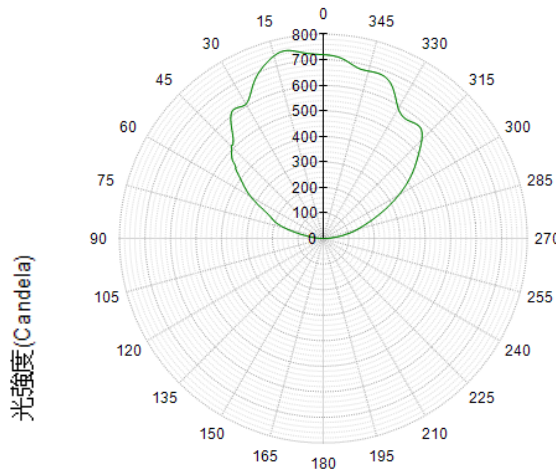
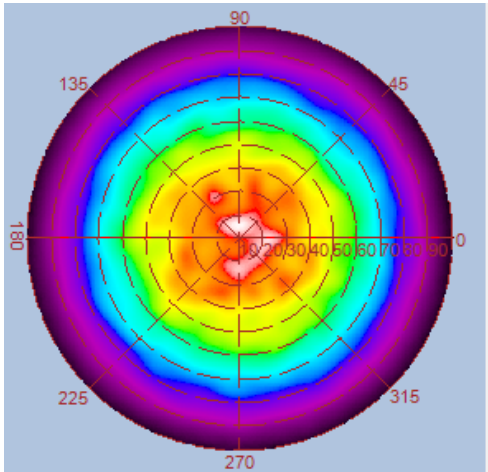


Height	E Avg.	E Max.	Diameter
1.0M	314 Lx	751 Lx	320 cm
2.0M	75 Lx	180 Lx	640 cm
3.0M	33 Lx	78 Lx	960 cm
4.0M	18 Lx	43 Lx	1280 cm
5.0M	11 Lx	28 Lx	1600 cm

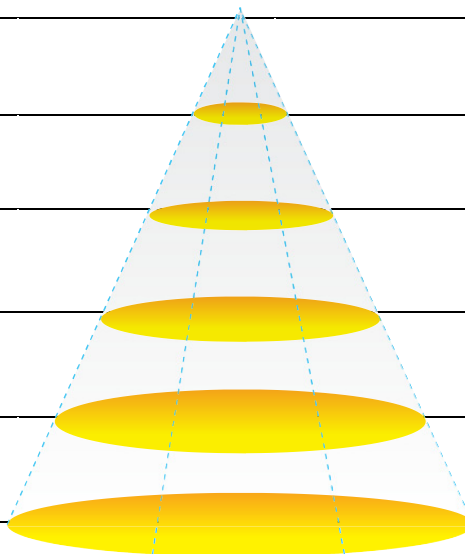


Luminous Intensity Distribution Diagram

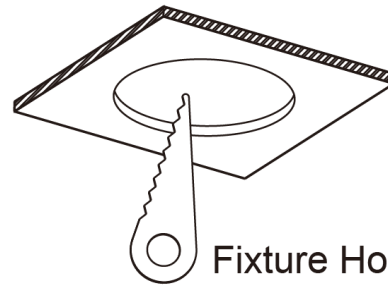
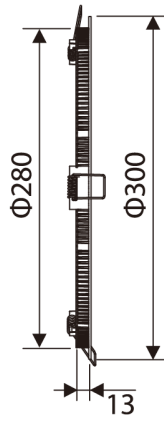
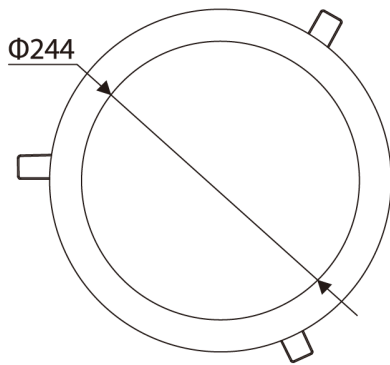
GL-DL10-CW/ CCT: 6000K



Height	E Avg.	E Max.	Diameter
1.0M	337 Lx	789 Lx	326 cm
2.0M	81 Lx	187 Lx	652 cm
3.0M	35 Lx	81 Lx	979 cm
4.0M	20 Lx	45 Lx	1305 cm
5.0M	12 Lx	28 Lx	1631 cm



Outline / Dimension



Fixture Hole: Ø285mm