



LED Down Light
 GL-DL08 Series
 GL-DL08D Series
 Dimming function

Features

- Indoor use
- High power efficiency > 80%
- High luminous efficiency LEDs
- No UV or IR radiation
- Cool light minimizes rise in ambient temperature
- Energy saving and environmentally friendly
- Slim, compact and fashionable design
- CE and FCC certifications
- Bundled driver with PFC and OTP/SCP functions
- Passed IEC 60598-1(2008) 、 IEC 60695-2-11 850°C glow wire test (optional).



Specifications

GL-DL08 (Non-Dimmable)

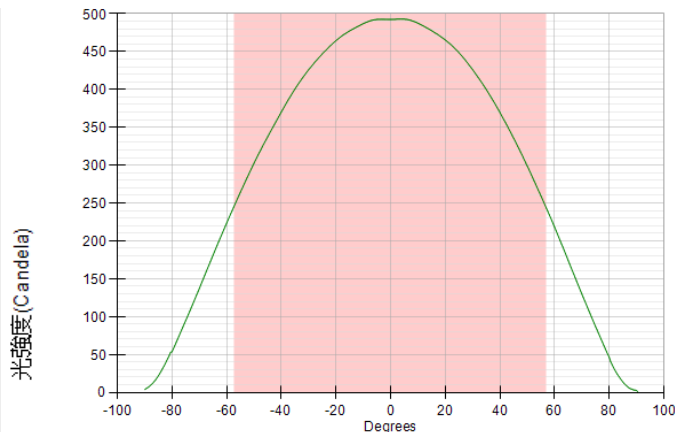
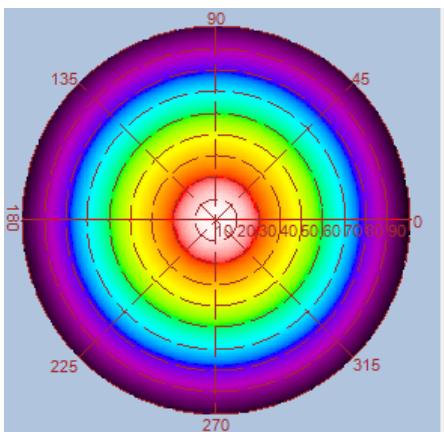
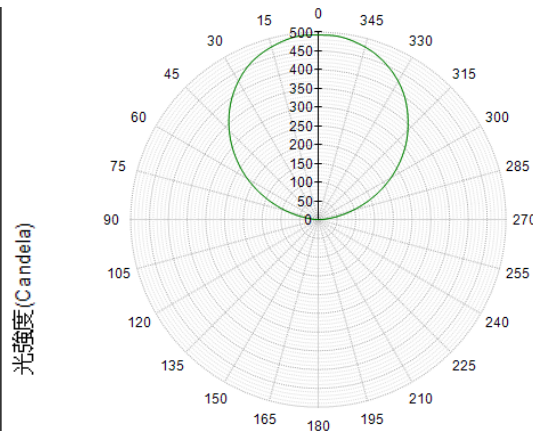
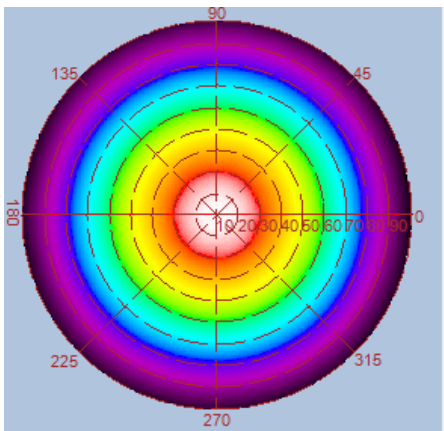
Type	GL-DL08-WW	GL-DL08-NW	GL-DL08-CW
Energy Used	17.3 W		
Rated Life	30,000 Hours		
Input Voltage	100-240V AC (Driver with cUL Certificate)		
Power Factor (PF)	0.88 at 120V AC, 0.8 at 240V AC		
CCT(color)	3000K	4000K	6000K
Luminous Flux	1430 lm	1460 lm	1600 lm
System Efficacy	83 lm/W	84 lm/W	92 lm/W
CRI (Minimum)	80	80	80
Beam Angle	110°		
Dimension	Φ 240 x 13 mm		
IP Rating	IP40		
Operation Temperature	-20°C ~ +40°C		
Bundled Driver	GP-HS15P-22C1 (Driver Output : Constant Current 700mA, 14~24V)		
Net. Weight	670 g (with driver)		
Package	10 Boxes / Carton		
Fixture Hole	Φ 225 mm		

GL-DL08DA (DC- Dimmable 0-10V/ PWM/ Resistor)

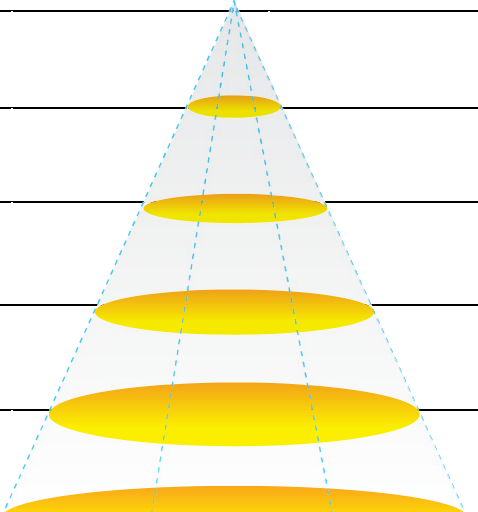
Type	GL-DL08DA-WW	GL-DL08DA-NW	GL-DL08DA-CW
Energy Used	17.3 W		
Rated Life	30,000 Hours		
Input Voltage	100-240V AC		
Power Factor (PF)	0.88 at 120V AC, 0.8 at 240V AC without dimmer		
CCT (color)	3000K	4000K	6000K
Luminous Flux	1430 lm	1460 lm	1600 lm
Luminous Efficacy	83 lm/W	84 lm/W	92 lm/W
CRI (Typ.)	80	80	80
Beam Angle	110°		
Dimension	Φ 240 x 13 mm		
IP Rating	IP40		
Operation Temperature	-20°C ~ +40°C		
Bundled Driver	GP-HS15P-24CA (for 0-10V/PWM/Resistor) (Driver Output : Constant Current 700mA, 24V)		
Net. Weight	670 g (with driver)		
Package	10 Boxes / Carton		
Fixture Hole	Φ 225 mm		

Luminous Intensity Distribution Diagram

GL-DL08-WW/ CCT : 3000K

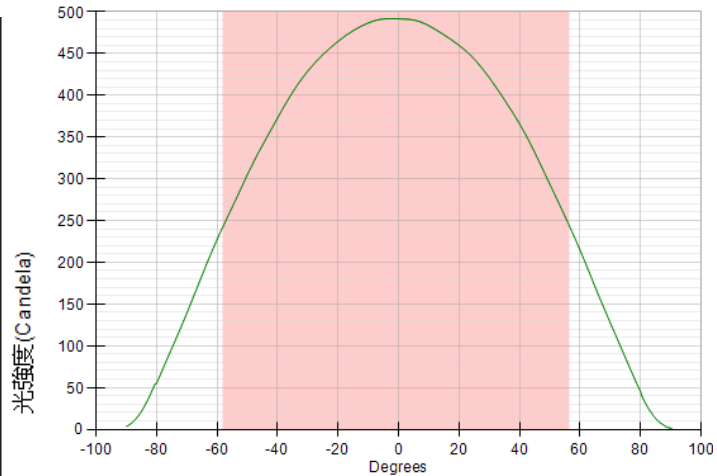
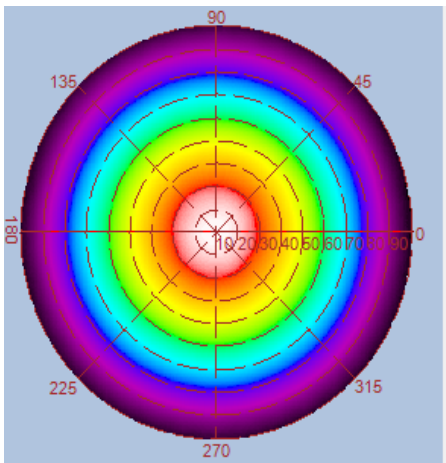
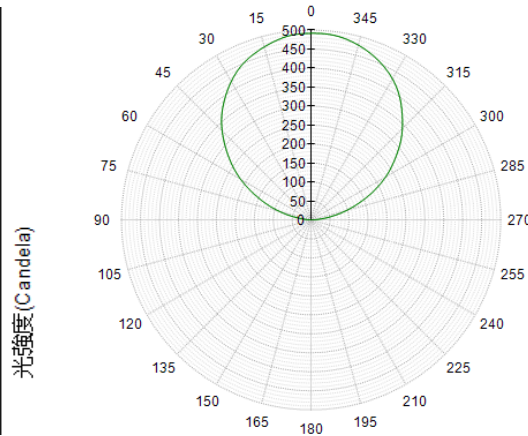
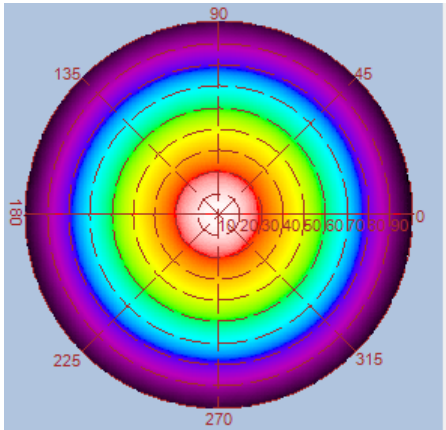


Height	E Avg.	E Max.	Diameter
1.0M	236 Lx	535 Lx	310 cm
2.0M	57 Lx	127 Lx	621 cm
3.0M	25 Lx	55 Lx	932 cm
4.0M	14 Lx	30 Lx	1243 cm
5.0M	9 Lx	19 Lx	1554 cm

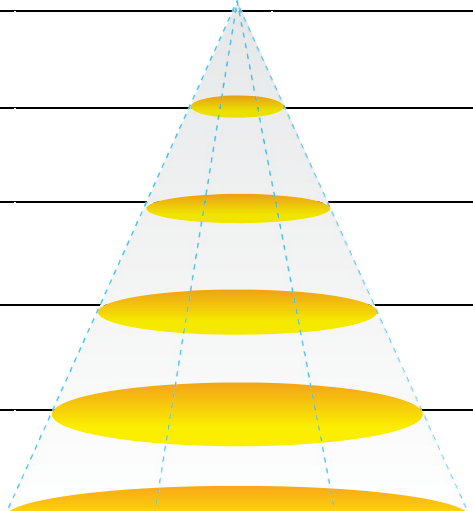


Luminous Intensity Distribution Diagram

GL-DL08-NW / CCT : 4000K

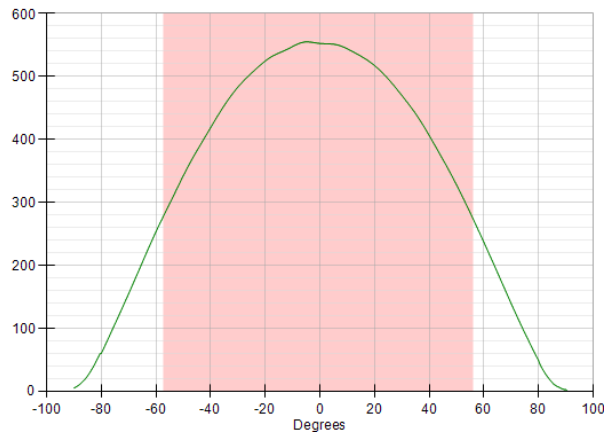
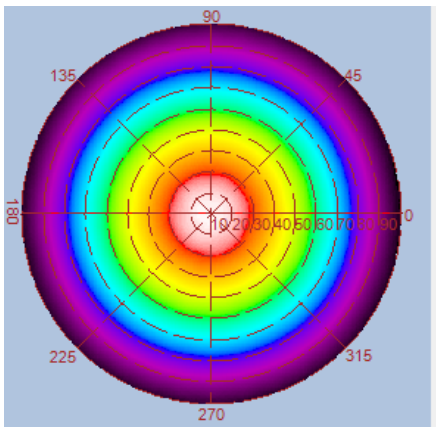
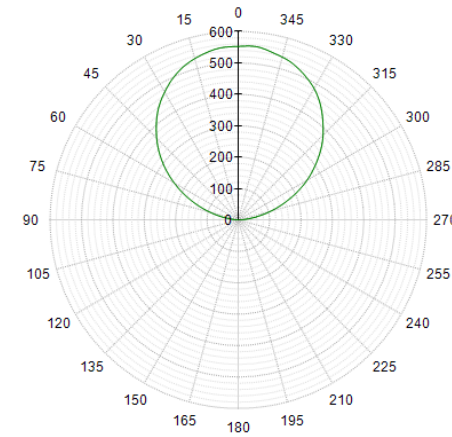
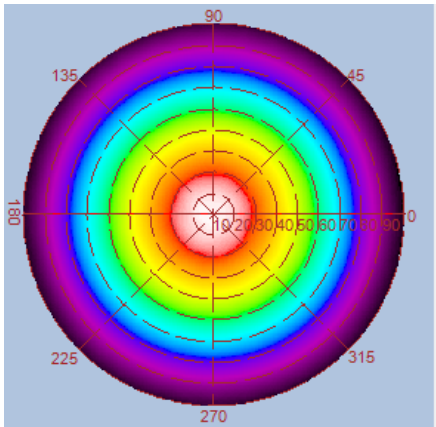


Height	E Avg.	E Max.	Diameter
1.0M	236 Lx	534 Lx	310 cm
2.0M	57 Lx	126 Lx	621 cm
3.0M	25 Lx	55 Lx	932 cm
4.0M	14 Lx	30 Lx	1243 cm
5.0M	9 Lx	19 Lx	1554 cm

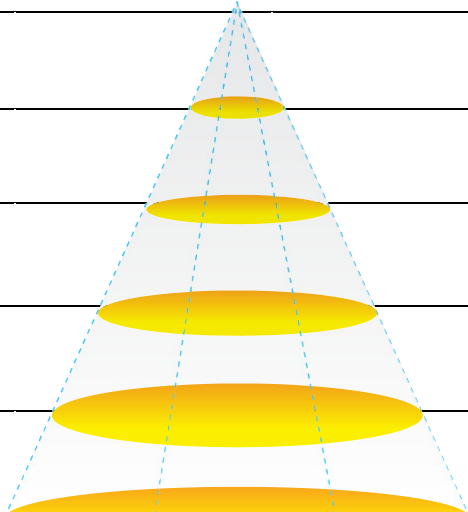


Luminous Intensity Distribution Diagram

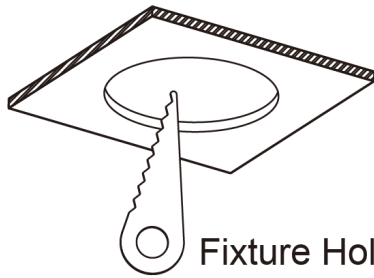
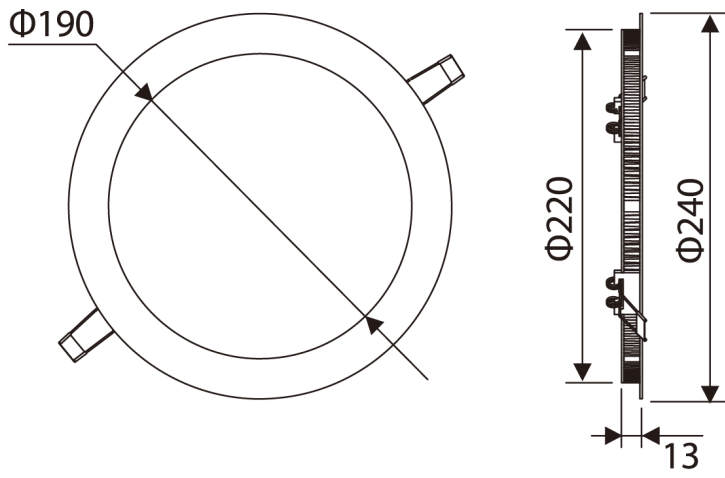
GL-DL08-CW/ CCT : 6000K



Height	E Avg.	E Max.	Diameter
1.0M	268 Lx	596 Lx	305 cm
2.0M	65 Lx	143 Lx	610 cm
3.0M	28 Lx	62 Lx	915 cm
4.0M	16 Lx	34 Lx	1220 cm
5.0M	10 Lx	21 Lx	1525 cm



Outline / Dimension



Fixture Hole: $\Phi 225\text{mm}$