

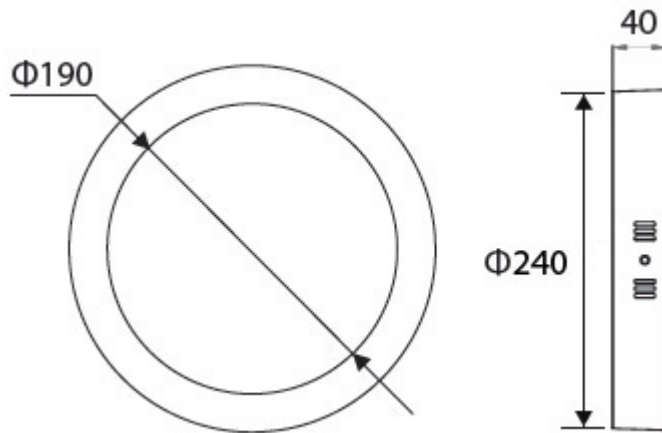


## Features

- The GL-DL08LD-SM for indoor applications
- DC input
- 16.5 W energy consumption
- Energy efficient and preventing possible energy waste
- All-in-one bulb and fixture
- Directly compatible with 12V and 24V solar panels
- Slim, compact and fashionable design
- Very low power consumption
- No UV or IR radiation
- Bundled driver with OVP/SCP/UVLO functions
- Passed IEC 60598-1(2008) 、 IEC 60695-2-11 850°C glow wire test (optional) .



## Outline / Dimension

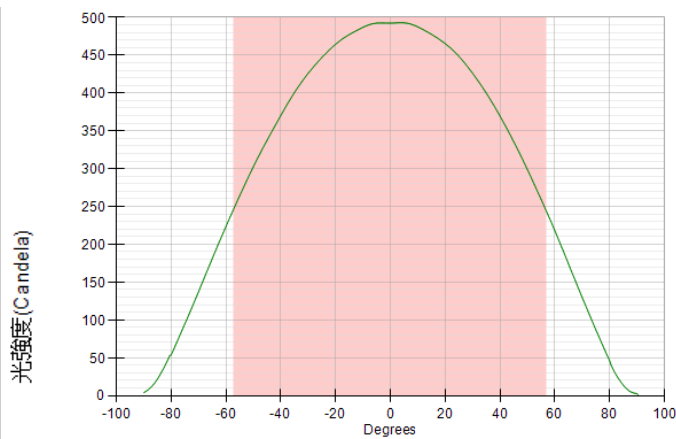
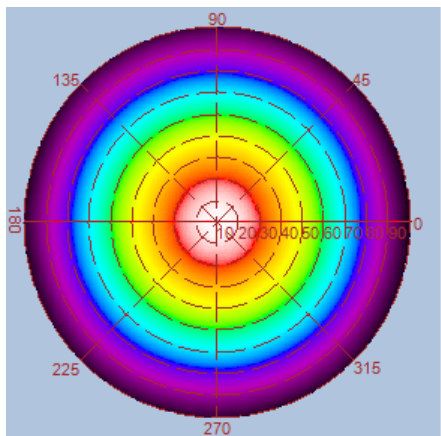
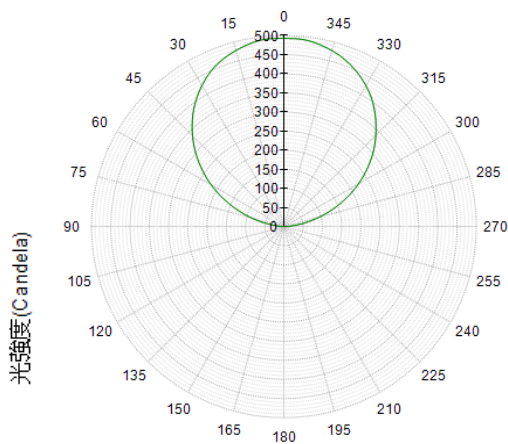
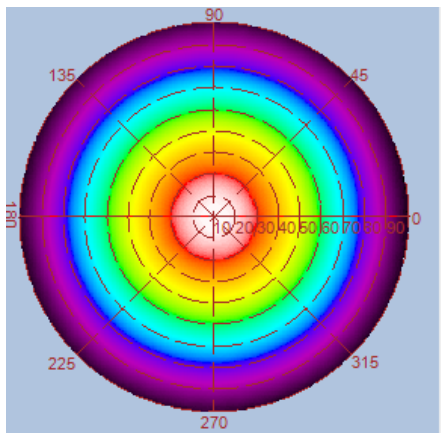


## Specifications

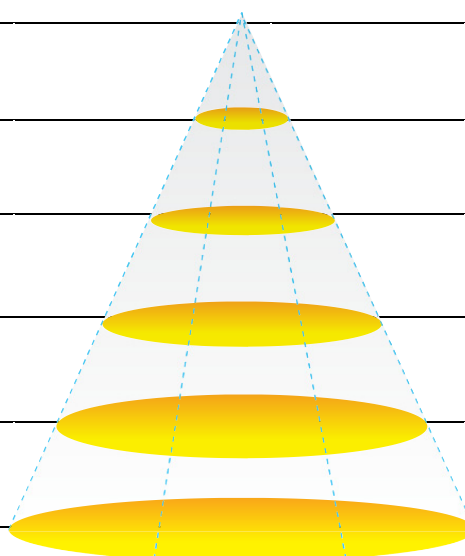
Type	GL-DL08LD-WW	GL-DL08LD-NW	GL-DL08LD-CW
Energy Used	16.5 W		
Rated Life	30,000 Hours		
Input Voltage	11-15V DC / 22-30V DC		
CCT (color)	3000K	4000K	6000K
Luminous Flux	1430 lm	1460 lm	1600 lm
System Efficacy	87 lm/W	88 lm/W	97 lm/W
CRI (Minimum)	80	80	80
Beam Angle	110°		
Dimension	Φ 240 x 40 mm		
IP Rating	IP20		
Operation Temperature	-20°C ~ +40°C		
Bundled Driver	GP-LD15-24C (Driver Output : Constant Current 700mA, 25V)		
Net Weight	770 g (with driver)		
Package	10 Boxes/ Carton		

## Luminous Intensity Distribution Diagram

GL-DL08-SM-WW/ CCT : 3000K

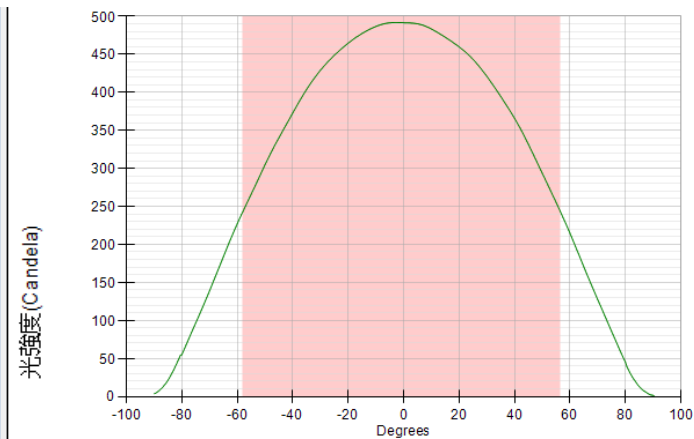
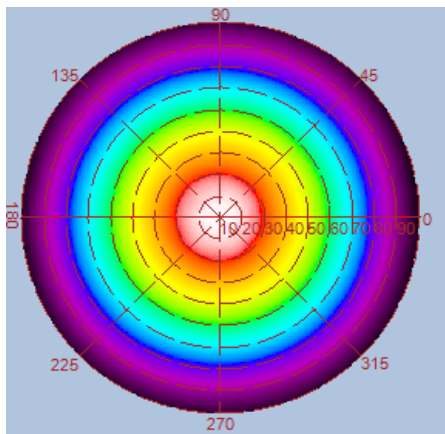
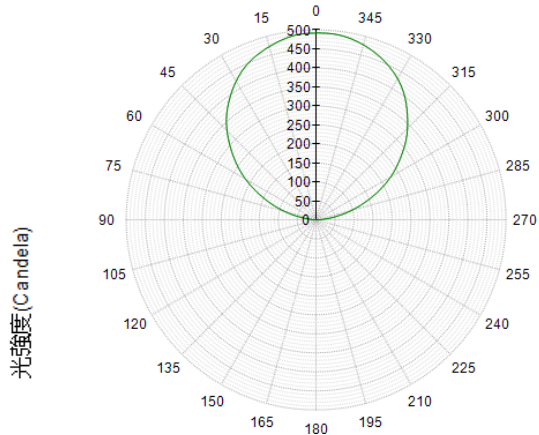
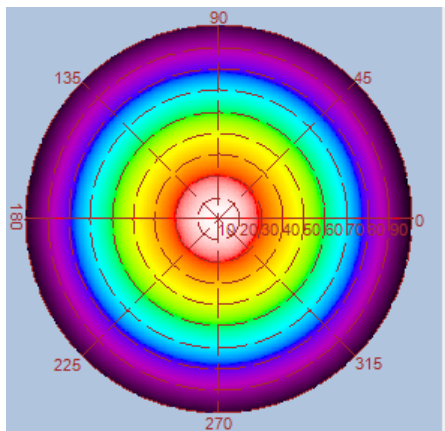


Height	E Avg.	E Max.	Diameter
1.0M	236 Lx	535 Lx	310 cm
2.0M	57 Lx	127 Lx	621 cm
3.0M	25 Lx	55 Lx	932 cm
4.0M	14 Lx	30 Lx	1243 cm
5.0M	9 Lx	19 Lx	1554 cm

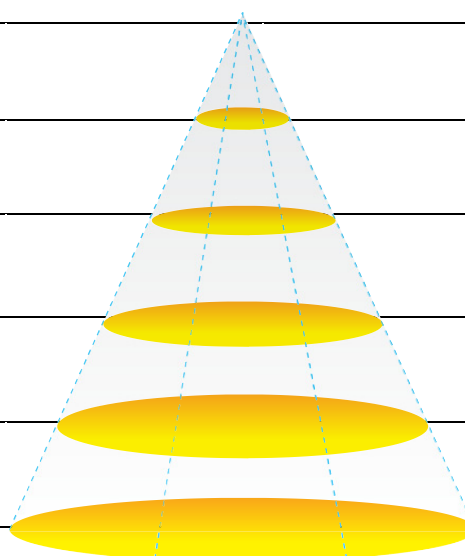


## Luminous Intensity Distribution Diagram

GL-DL08-SM-NW / CCT : 4000K

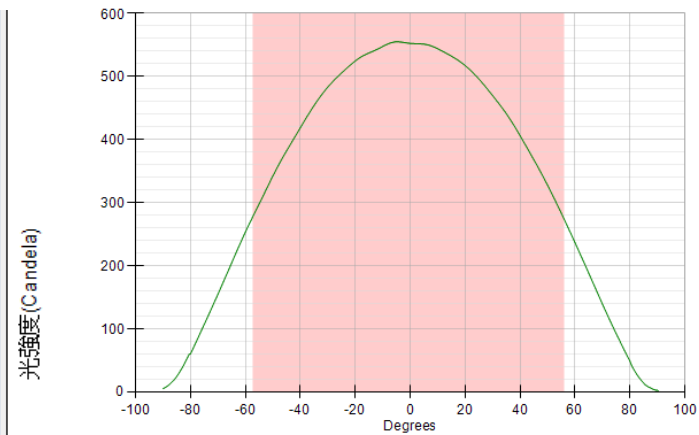
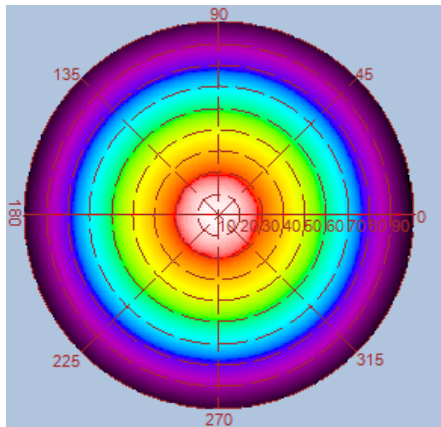
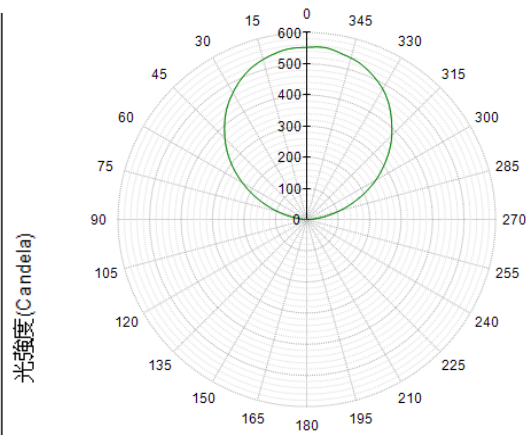
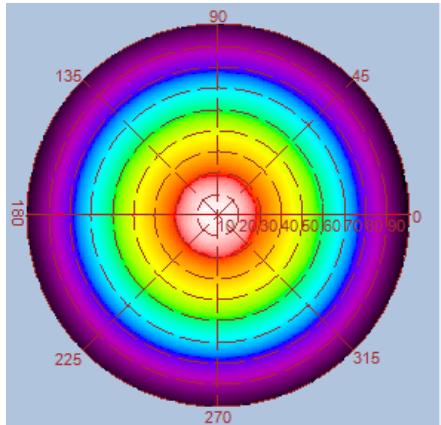


Height	E Avg.	E Max.	Diameter
1.0M	236 Lx	534 Lx	310 cm
2.0M	57 Lx	126 Lx	621 cm
3.0M	25 Lx	55 Lx	932 cm
4.0M	14 Lx	30 Lx	1243 cm
5.0M	9 Lx	19 Lx	1554 cm

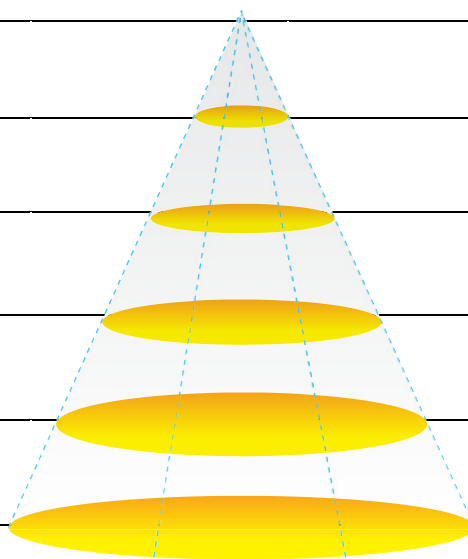


## Luminous Intensity Distribution Diagram

**GL-DL08-SM-CW/ CCT : 6000K**

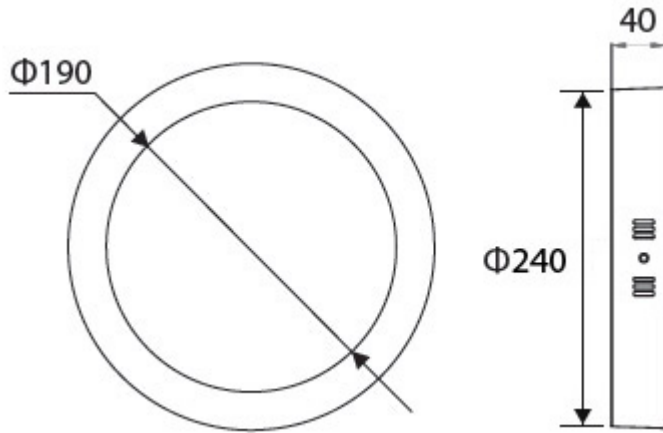


Height	E Avg.	E Max.	Diameter
1.0M	268 Lx	596 Lx	305 cm
2.0M	65 Lx	143 Lx	610 cm
3.0M	28 Lx	62 Lx	915 cm
4.0M	16 Lx	34 Lx	1220 cm
5.0M	10 Lx	21 Lx	1525 cm





## Outline / Dimension



## Package

