



Features

- For indoor use only
- Power conversion efficiency > 80%
- Eco-friendly: RoHS Compliant, No UV, no IR, & no mercury
- Low power consumption – energy-saving green product
- Slim, compact and fashionable design
- Bundled driver with PFC and OTP/SCP functions
- 2 Years Warranty
- Passed IEC 60598-1(2008) 、 IEC 60695-2-11 850°C glow wire test (optional) .



Specifications

GL-DL06 (Non-Dimmable)

Type	GL-DL06-WW	GL-DL06-NW	GL-DL06-CW
Energy Used	10.9 W		
Rated Life	30,000 Hours		
Input Voltage	100-240V AC (Driver with cUL Certificate)		
Power Factor (PF)	0.8 at 120V AC, 0.8 at 240V AC		
CCT(color)	3000K	4000K	6000K
Luminous Flux	900 lm	920 lm	980 lm
System Efficacy	83 lm/W	84 lm/W	90 lm/W
CRI (Minimum)	80	80	80
Beam Angle	110°		
Dimension	Φ180 x 13 mm		
IP Rating	IP50		
Operation Temperature	-20°C ~ +40°C		
Bundled Driver	GP-HS10P-36C (Driver Output : Constant Current 350mA, 24~36V)		
Net. Weight	450 g (with driver)		
Package	10 Boxes / Carton		
Fixture Hole	Φ 165 mm		

GL-DL06Dx (AC-TRIAC Dimmable)

Type	GL-DL06DL-WW GL-DL06DH-WW	GL-DL06DL-NW GL-DL06DH-NW	GL-DL06DL-CW GL-DL06DH-CW
Energy Used	10.9 W		
Rated Life	30,000 Hours		
Input Voltage	100-120V AC (GL-DL06DL) 200-240V AC (GL-DL06DH)		
Power Factor (PF)	0.8 at 120V AC, 0.7 at 240V AC without dimmer		
CCT(color)	3000K	4000K	6000K
Luminous Flux	900 lm	920 lm	980 lm
System Efficacy	83 lm/W	84 lm/W	90 lm/W
CRI (Minimum)	80	80	80
Beam Angle	110°		
Dimension	Φ180 x 13 mm		
IP Rating	IP50		
Operation Temperature	-20°C ~ +40°C		
Bundled Driver	GP-TS10P-30L (for AC-TRIAC 100-120V AC) GP-TS10P-30H (for AC-TRIAC 200-240V AC) (Driver Output : Constant Current 350mA, 30V)		
Net. Weight	450 g (with driver)		
Package	10 Boxes / Carton		
Fixture Hole	Φ 165 mm		

Specifications

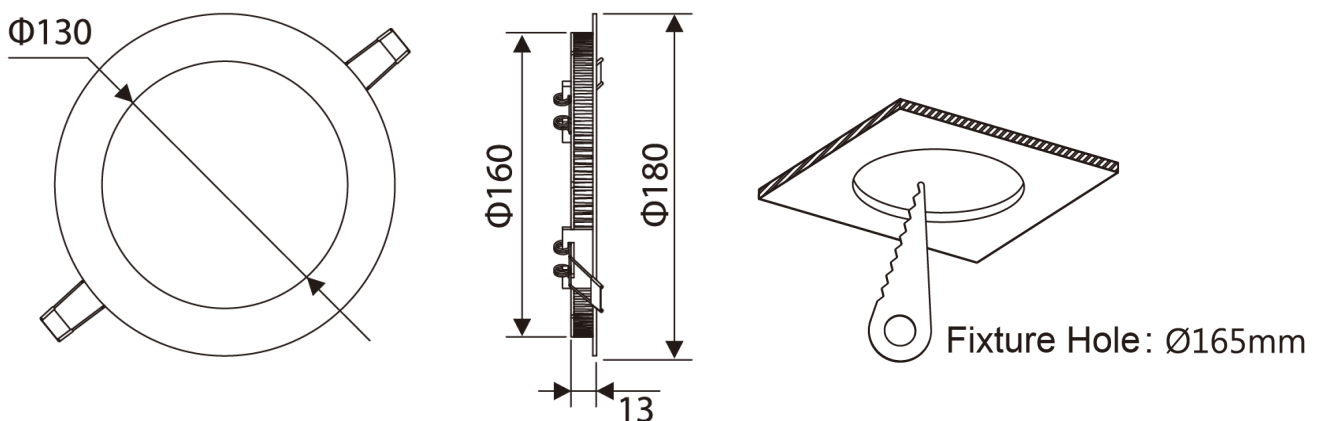
GL-DL06DA (DC- Dimmable 1-10V/ PWM/ Resistor)

Type	GL-DL06DA-W	GL-DL06DA-NW	GL-DL06DA-CW
Energy Used	10.9 W		
Rated Life	30,000 Hours		
Input Voltage	100-240V AC		
Power Factor (PF)	0.88 at 120V AC , 0.8 at 240V AC without dimmer		
CCT(color)	3000K	4000K	6000K
Luminous Flux	900 lm	920 lm	980 lm
System Efficacy	83 lm/W	84 lm/W	90 lm/W
CRI (Minimum)	80	80	80
Beam Angle	110°		
Dimension	Φ180 x 13 mm		
IP Rating	IP50		
Operation Temperature	-20°C ~ +40°C		
Bundled Driver	GP-HS10P-36CA (for 1-10V/PWM/Resistor) (Driver Output : Constant Current 350mA, 36V)		
Net. Weight	450 g (with driver)		
Package	10 Boxes / Carton		
Fixture Hole	Φ 165 mm		

* All specifications apply to the fixture assembly as a whole.

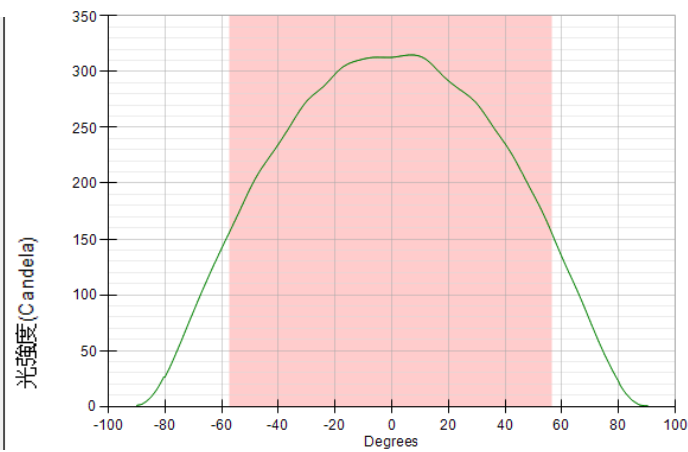
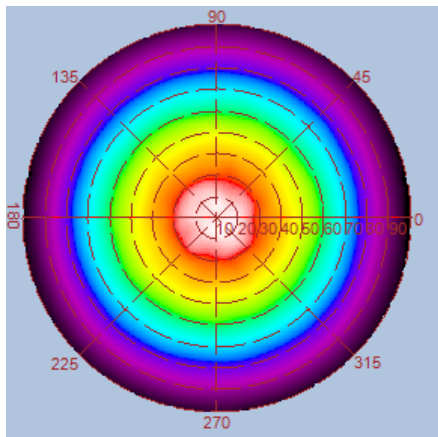
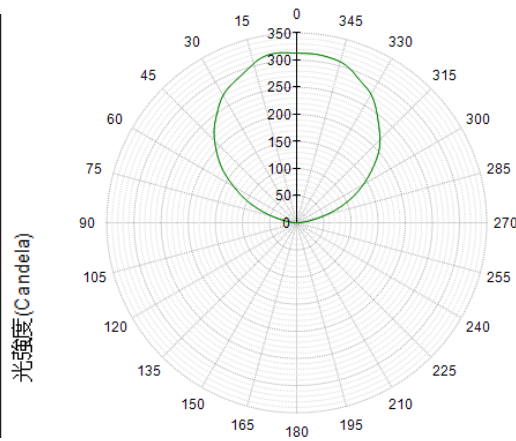
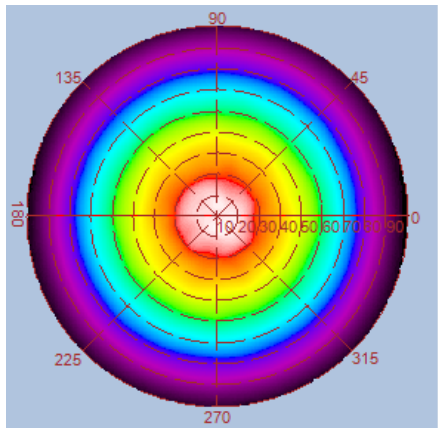
Due to the slight variations in the testing environment such as differences in ambient temperature or test equipment calibration, specifications are statistical reference values and may not match the actual technical parameters of an individual product.

Outline / Dimension

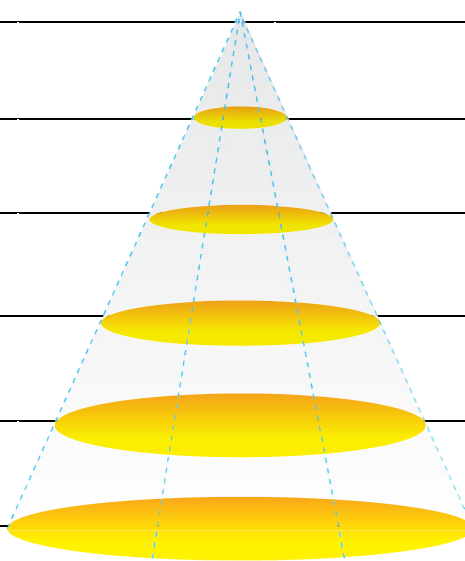


Luminous Intensity Distribution Diagram

GL-DL06 –WW/ CCT : 3000K

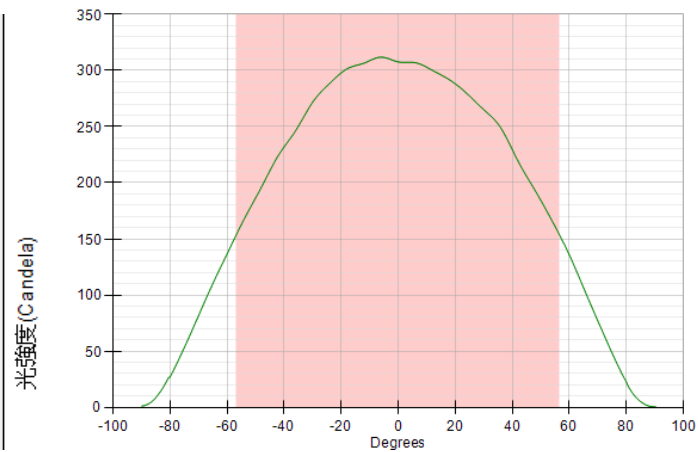
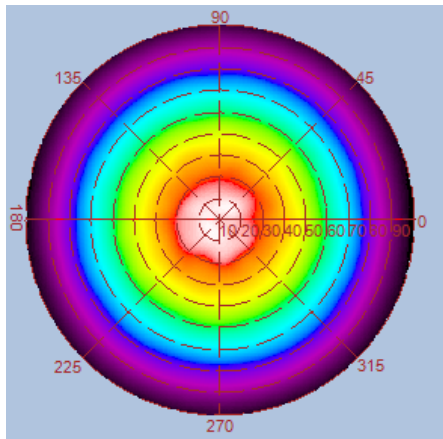
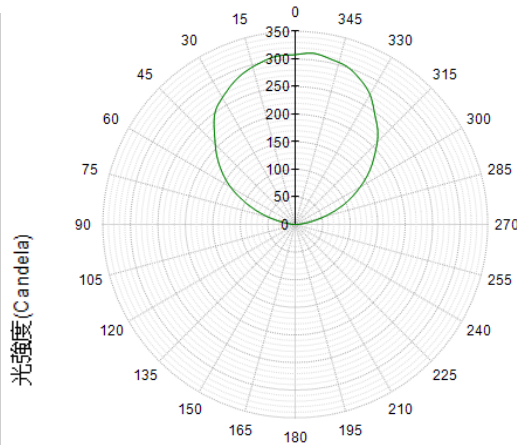
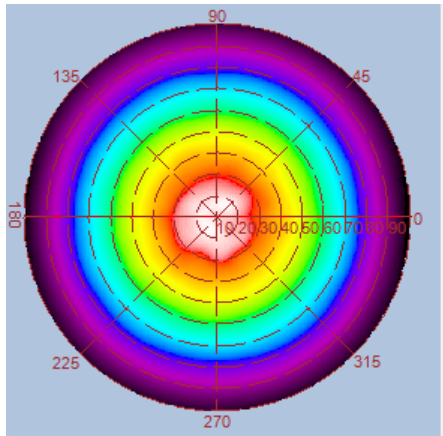


Height	E Avg.	E Max.	Diameter
1.0M	152 Lx	341 Lx	307 cm
2.0M	37 Lx	81 Lx	615 cm
3.0M	16 Lx	35 Lx	923 cm
4.0M	9 Lx	19 Lx	1231 cm
5.0M	5 Lx	12 Lx	1529 cm

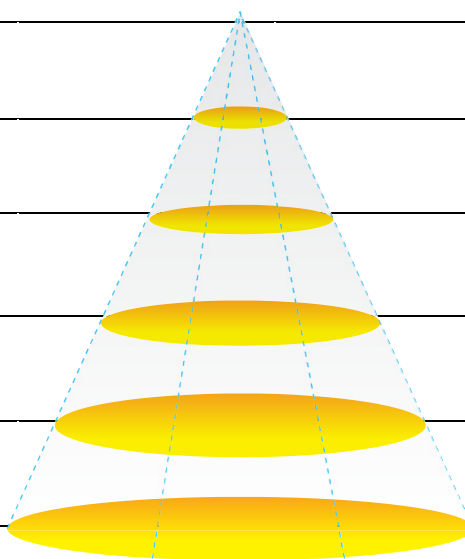


Luminous Intensity Distribution Diagram

GL-DL06 –NW/ CCT : 4000K

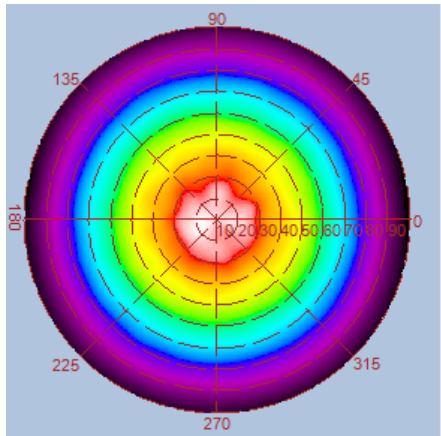


Height	E Avg.	E Max.	Diameter
1.0M	151 Lx	337 Lx	305 cm
2.0M	36 Lx	79 Lx	610 cm
3.0M	16 Lx	34 Lx	915 cm
4.0M	9 Lx	19 Lx	1220 cm
5.0M	5 Lx	12 Lx	1525 cm

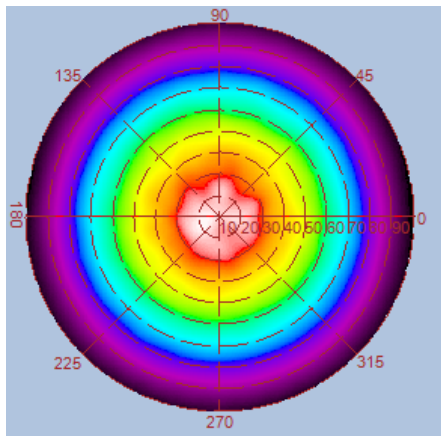
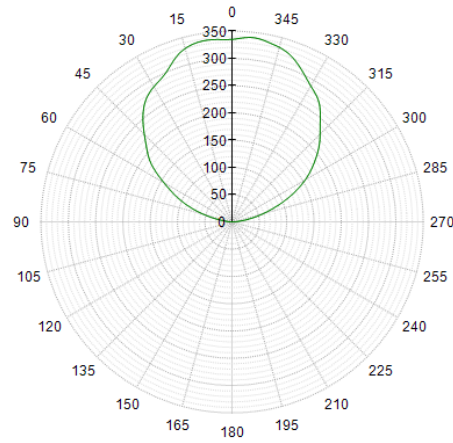


Luminous Intensity Distribution Diagram

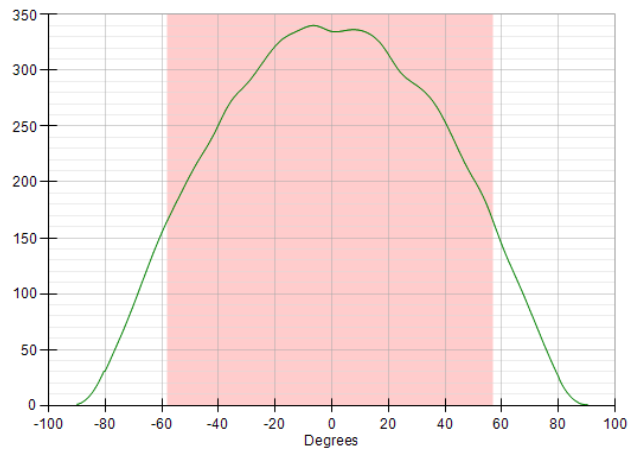
GL-DL06 –CW /CCT : 6000K



光強度(Candela)



光強度(Candela)



Height	E Avg.	E Max.	Diameter
1.0M	160 Lx	366 Lx	313 cm
2.0M	38 Lx	86 Lx	627 cm
3.0M	17 Lx	37 Lx	941 cm
4.0M	9 Lx	20 Lx	1255 cm
5.0M	6 Lx	13 Lx	1569 cm

