



Features

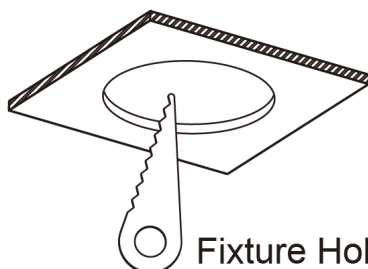
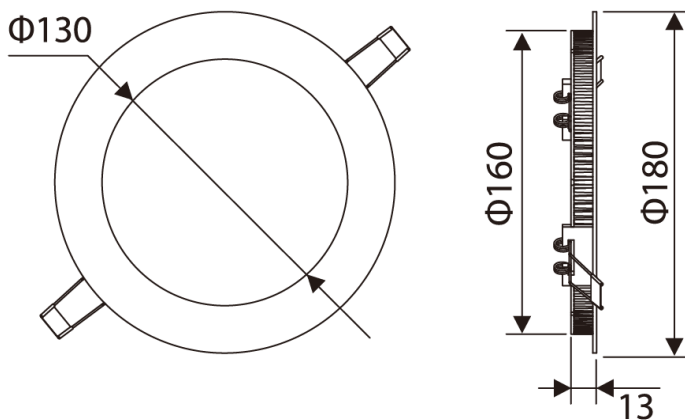
- The GL-DL06LD for indoor applications
- DC input
- 10.5W energy consumption
- Energy efficient and preventing possible energy waste
- All-in-one bulb and fixture
- Directly compatible with 12V and 24V solar panels
- Slim, compact and fashionable design
- Very low power consumption
- No UV or IR radiation
- Bundled driver with OVP/SCP/UVLO functions
- Passed IEC 60598-1(2008) 、 IEC 60695-2-11 850°C glow wire test (optional).



Specifications

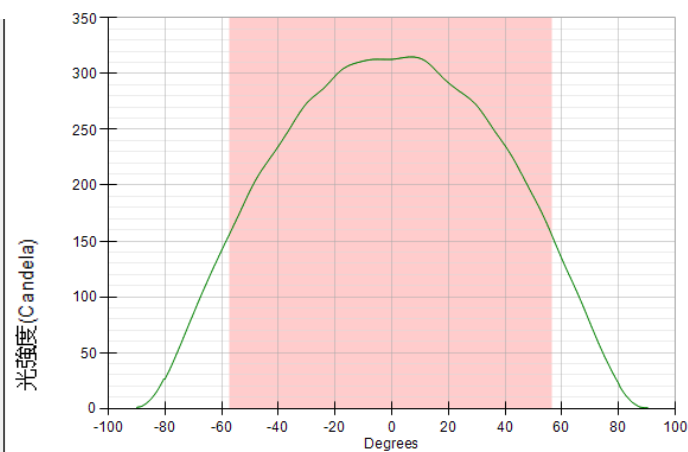
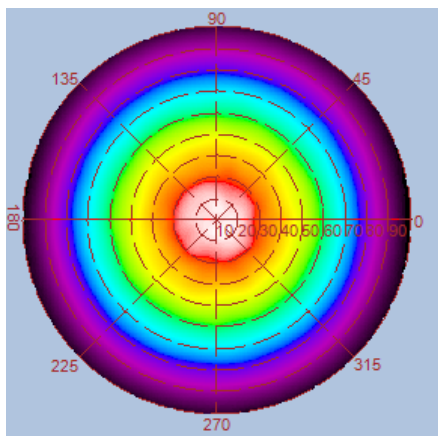
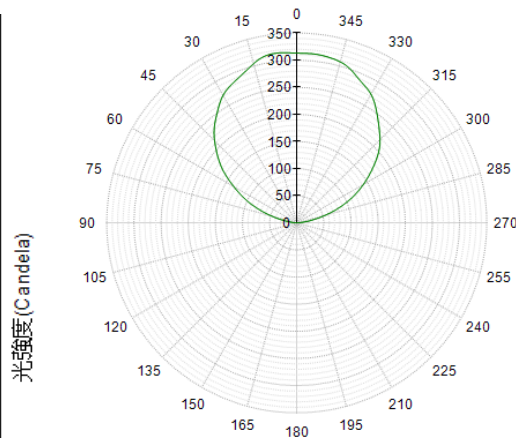
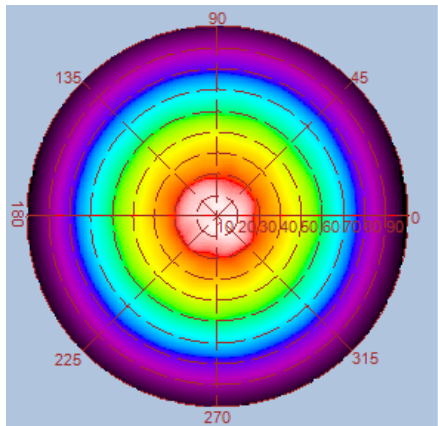
Type	GL-DL06LD-WW	GL-DL06LD-NW	GL-DL06LD-CW
Energy Used	10.5 W		
Rated Life	30,000 Hours		
Input Voltage	11-15V DC / 22-30V DC		
CCT (color)	3000K	4000K	6000K
Luminous Flux	900 lm	920 lm	980 lm
System Efficacy	86 lm/W	88 lm/W	93 lm/W
CRI (Minimum)	80	80	80
Beam Angle	110°		
Dimension	Φ 180 x 13 mm		
IP Rating	IP50		
Operation Temperature	-20°C ~ +40°C		
Bundled Driver	GP-LD10-30C (Driver Output: Constant Current 350mA, 30V)		
Net Weight	410 g (with driver)		
Package	10 Boxes / Carton		
Fixture Hole	Φ 165 mm		

Outline / Dimension

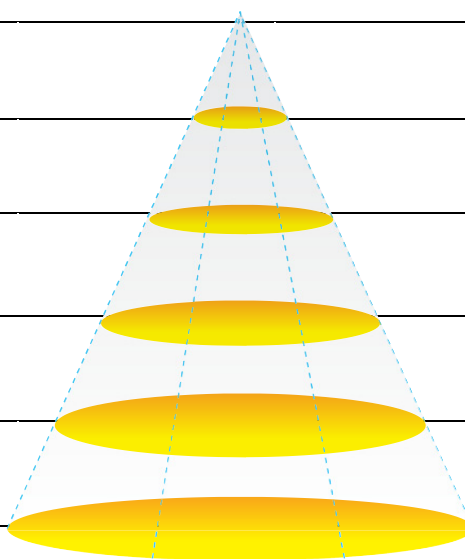


Luminous Intensity Distribution Diagram

GL-DL06 –WW/ CCT : 3000K

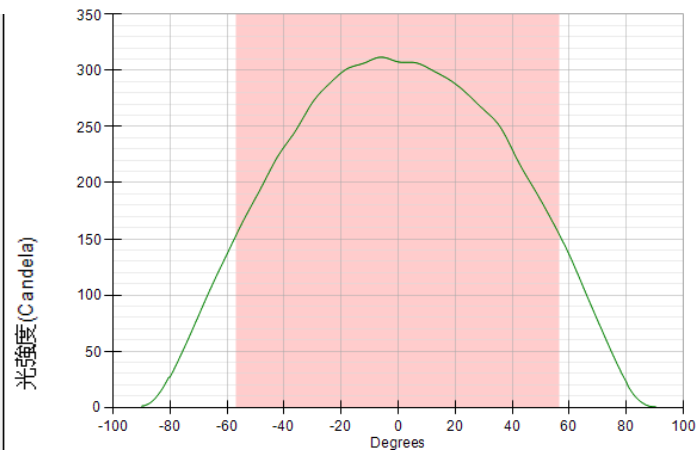
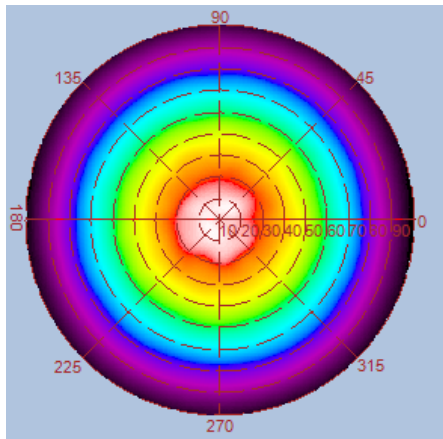
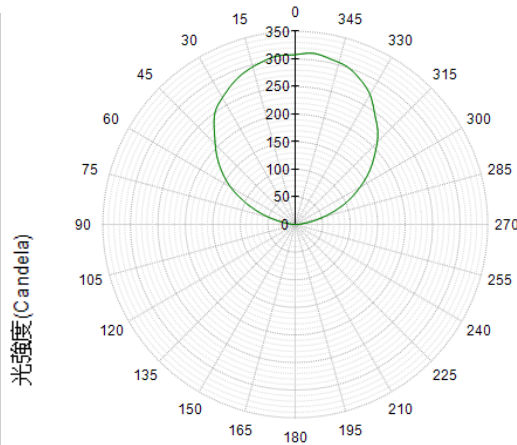
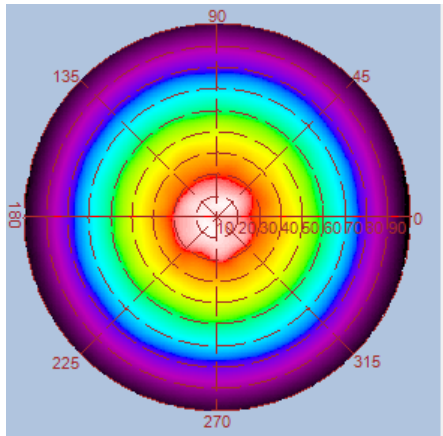


Height	E Avg.	E Max.	Diameter
1.0M	152 Lx	341 Lx	307 cm
2.0M	37 Lx	81 Lx	615 cm
3.0M	16 Lx	35 Lx	923 cm
4.0M	9 Lx	19 Lx	1231 cm
5.0M	5 Lx	12 Lx	1529 cm

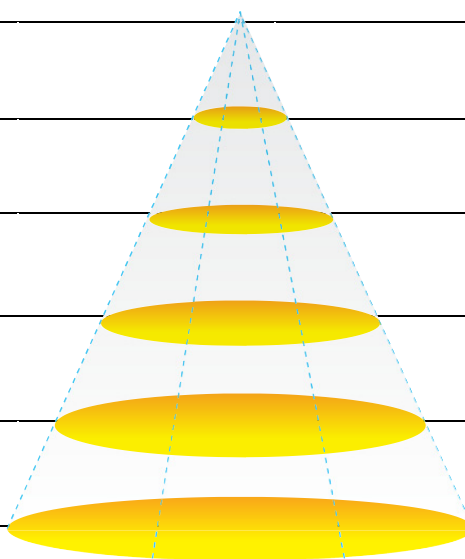


Luminous Intensity Distribution Diagram

GL-DL06 –NW/ CCT : 4000K

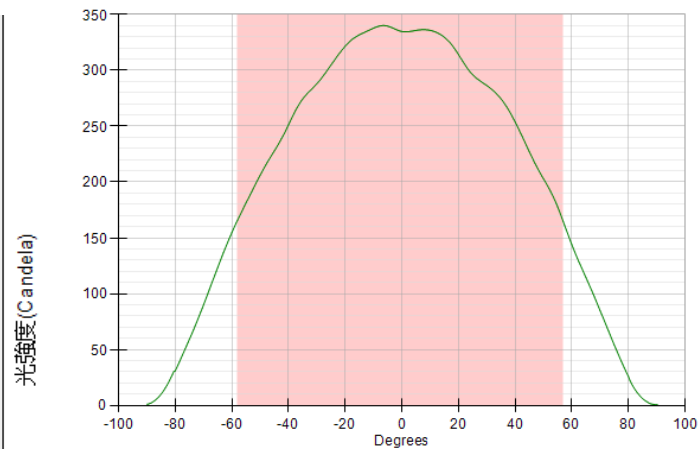
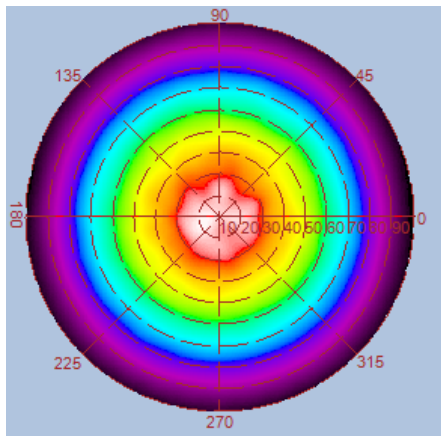
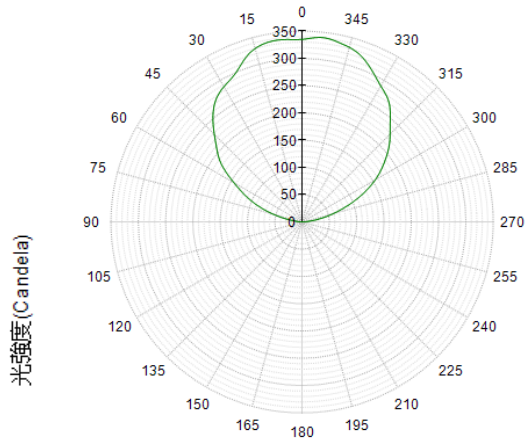
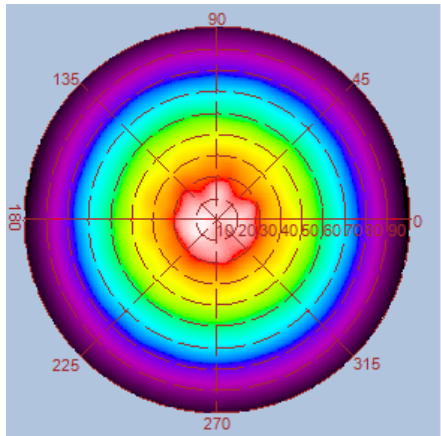


Height	E Avg.	E Max.	Diameter
1.0M	151 Lx	337 Lx	305 cm
2.0M	36 Lx	79 Lx	610 cm
3.0M	16 Lx	34 Lx	915 cm
4.0M	9 Lx	19 Lx	1220 cm
5.0M	5 Lx	12 Lx	1525 cm



Luminous Intensity Distribution Diagram

GL-DL06 –CW /CCT : 6000K



Height	E Avg.	E Max.	Diameter
1.0M	160 Lx	366 Lx	313 cm
2.0M	38 Lx	86 Lx	627 cm
3.0M	17 Lx	37 Lx	941 cm
4.0M	9 Lx	20 Lx	1255 cm
5.0M	6 Lx	13 Lx	1569 cm

