



Features

- One piece, easy installation
- Can be mounted on nearly any surface: wall or ceiling
- Die-cast aluminum construction - light and sturdy
- Color temperatures 3000K/4000K/6000K available
- Optional rod pendant mounted allows lighting to get closer to the projection object
- AC Models compatible with AC voltage worldwide
- DC Models compatible with 11-15V, 22-30V DC
- There are 4 different models under this series: non-dimmable, 3-in-1 dimmable , AC-TRIAC dimmable, and DC input

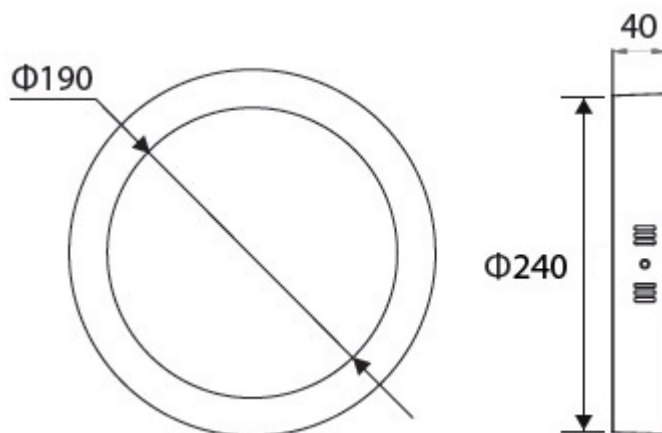


Specifications

GL-DL06LD-SM (DC input)

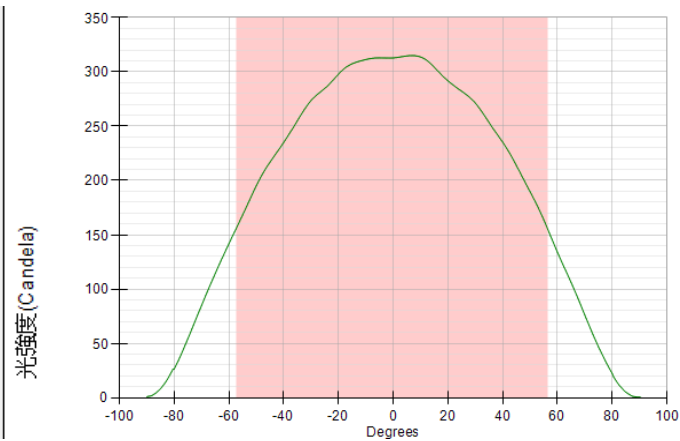
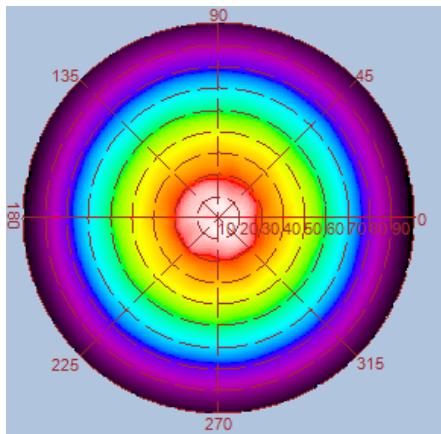
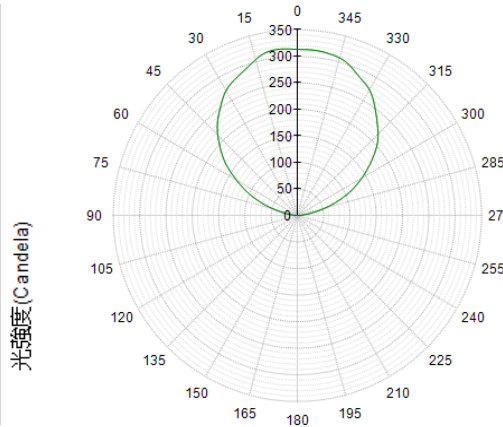
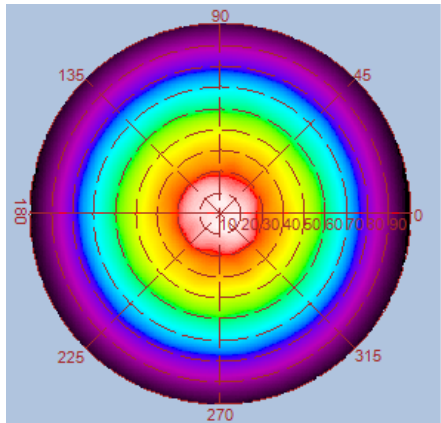
Type	GL-DL06LD-SM-WW	GL-DL06LD-SM-NW	GL-DL06LD-SM-CW
Energy Used	10.5 W		
Rated Life	30,000 Hours		
Input Voltage	11-15V DC / 22-30V DC		
CCT (color)	3000K	4000K	6000K
Luminous Flux	900 lm	920 lm	980 lm
System Efficacy	86 lm/W	88 lm/W	93 lm/W
CRI (Minimum)	80	80	80
Beam Angle	110°		
Dimension	Φ 180 x 40 mm		
IP Rating	IP40		
Operation Temperature	-20°C ~ +40°C		
Bundled Driver	GP-LD10-30C (Driver Output : Constant Current 350mA, 30V)		
Net Weight	510 g (with driver)		
Package	10 Boxes / Carton		

Outline / Dimension

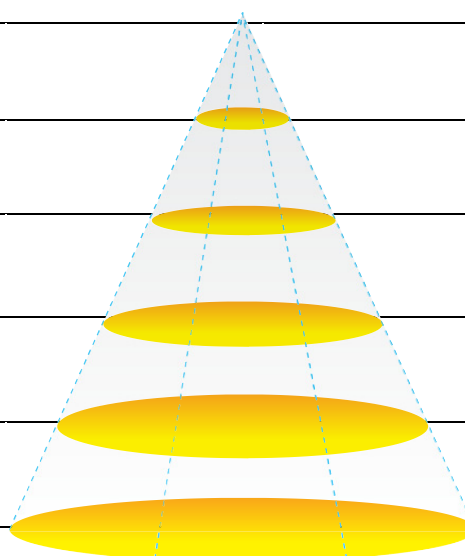


Luminous Intensity Distribution Diagram

GL-DL06 -SM-WW/ CCT : 3000K

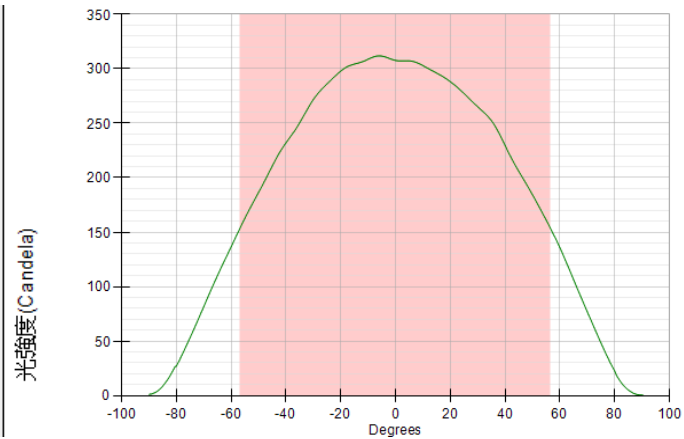
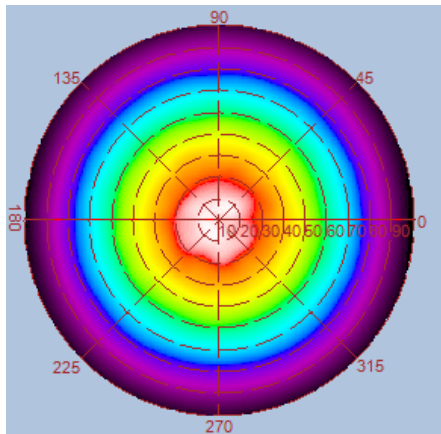
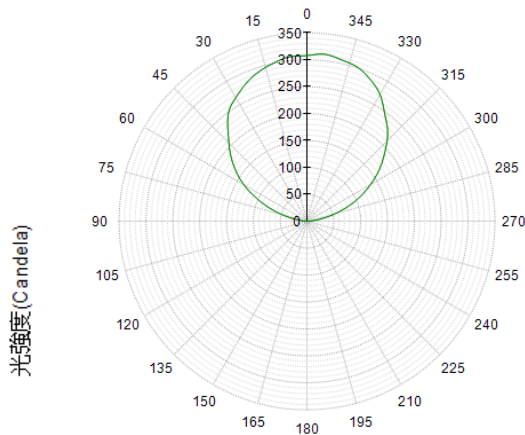
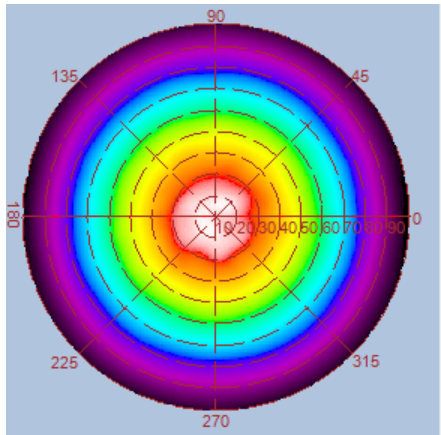


Height	E Avg.	E Max.	Diameter
1.0M	152 Lx	341 Lx	307 cm
2.0M	37 Lx	81 Lx	615 cm
3.0M	16 Lx	35 Lx	923 cm
4.0M	9 Lx	19 Lx	1231 cm
5.0M	5 Lx	12 Lx	1529 cm

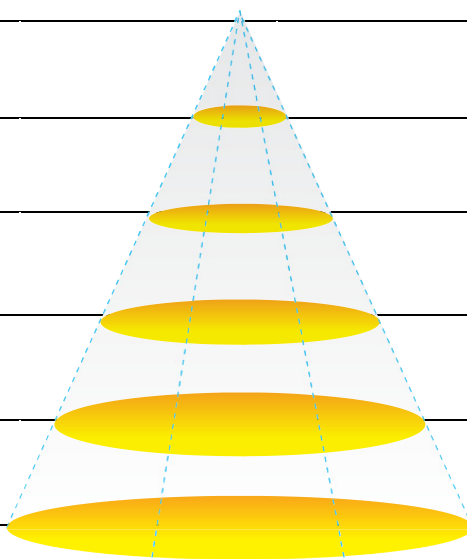


Luminous Intensity Distribution Diagram

GL-DL06 -SM-NW/ CCT : 4000K

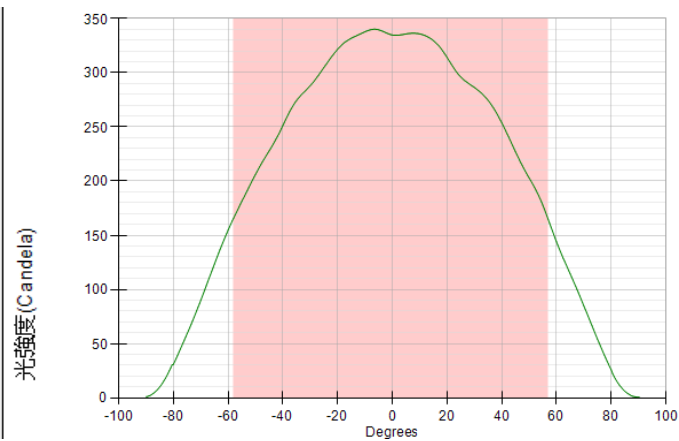
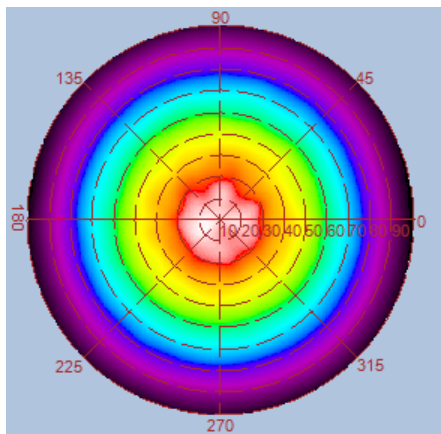
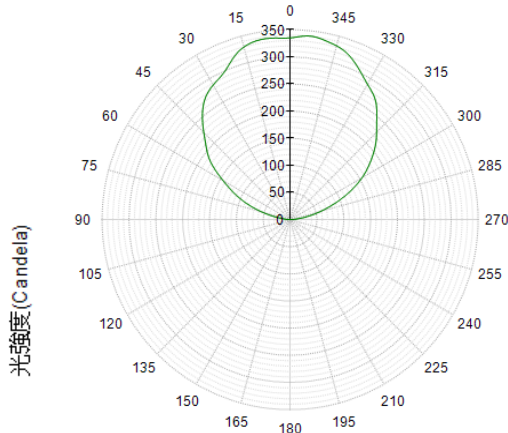
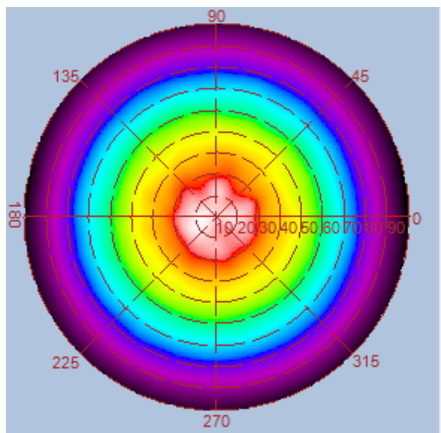


Height	E Avg.	E Max.	Diameter
1.0M	151 Lx	337 Lx	305 cm
2.0M	36 Lx	79 Lx	610 cm
3.0M	16 Lx	34 Lx	915 cm
4.0M	9 Lx	19 Lx	1220 cm
5.0M	5 Lx	12 Lx	1525 cm

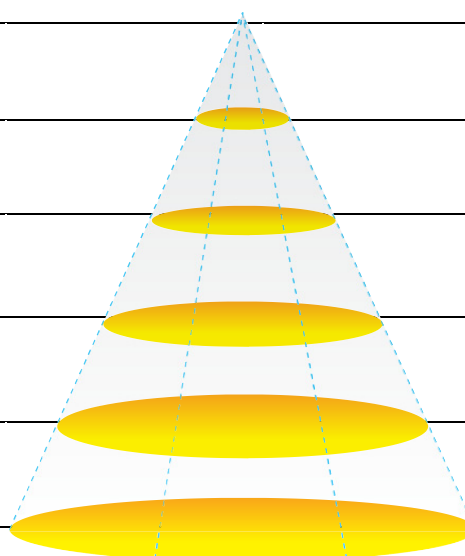


Luminous Intensity Distribution Diagram

GL-DL06-SM –CW /CCT : 6000K



Height	E Avg.	E Max.	Diameter
1.0M	160 Lx	366 Lx	313 cm
2.0M	38 Lx	86 Lx	627 cm
3.0M	17 Lx	37 Lx	941 cm
4.0M	9 Lx	20 Lx	1255 cm
5.0M	6 Lx	13 Lx	1569 cm



Package

