



Features

- For indoor or sheltered outdoor ceiling lighting applications.
- Waterproof (IP54).
- All-in-one bulb and fixture.
- Light flow smoothly fades around the edges of the fixture to create a special atmospheric effect.
- Non-dimmable, AC-TRIAC dimmable and 3-in-1 dimmable (1-10V/PWM/Resistor) options.
- Slim, compact and fashionable design.
- Very low power consumption.
- No UV or IR radiation.
- Bundled driver with PFC and OTP/SCP functions.
- Passed IEC 60598-1(2008) 、 IEC 60695-2-11 850°C glow wire test (optional) .



Specifications

DL06-IP (non-dimmable)

Type	GL-DL06-IP-WW	GL-DL06-IP-NW	GL-DL06-IP-CW
Energy Used	10.8 W		
Rated Life	30,000 Hours		
Input Voltage	100-240V AC (Driver with cUL Certificate)		
Power Factor (PF)	0.88 at 120V AC, 0.8 at 240V AC		
CCT (color)	3000K	4000K	6000K
Luminous Flux	800 lm	820 lm	890 lm
System Efficacy	74 lm/W	76 lm/W	82 lm/W
CRI (Minimum)	80	80	80
Beam Angle	110°		
Dimension	Φ 161 x 20 mm		
IP Rating	IP54		
Operation Temperature	-20°C ~ +40°C		
Bundled Driver	GP-HS10P-36C (Driver Output : Constant Current 350mA, 24~36V)		
Net Weight	460 g (with driver)		
Package	10 Boxes / Carton		
Fixture Hole	Φ 152 mm		

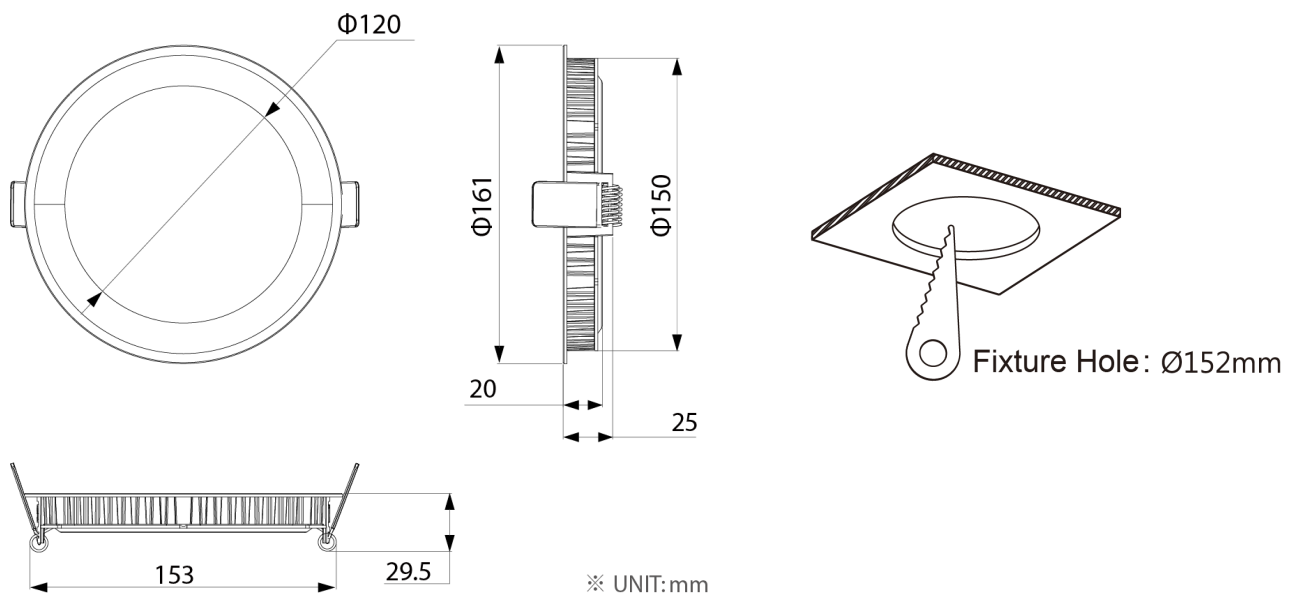
DL06Dx-IP (AC-TRIAC dimmable)

Type	GL-DL06DL-IP-WW GL-DL06DH-IP-WW	GL-DL06DL-IP-NW GL-DL06DH-IP-NW	GL-DL06DL-IP-CW GL-DL06DH-IP-CW
Energy Used	10.8 W		
Rated Life	30,000 Hours		
Input Voltage	100-120V AC (GL-DL06DL-IP) 200-240V AC (GL-DL06DH-IP)		
Power Factor (PF)	0.8 at 120V AC, 0.7 at 240V AC without dimmer		
CCT (color)	3000K	4000K	6000K
Luminous Flux	800 lm	820 lm	890 lm
System Efficacy	74 lm/W	76 lm/W	82 lm/W
CRI (Minimum)	80	80	80
Beam Angle	110°		
Dimension	Φ 161 x 20 mm		
IP Rating	IP54		
Operation Temperature	-20°C ~ +40°C		
Bundled Driver	GP-TS10P-30L (for AC-TRIAC 100-120V AC) GP-TS10P-30H (for AC-TRIAC 200-240V AC) (Driver Output : Constant Current 350mA, 30V)		
Net Weight	460 g (with driver)		
Package	10 Boxes / Carton		
Fixture Hole	Φ 152 mm		

DL06DA-IP (3in1 dimmable) 1-10V/PWM/Resistor

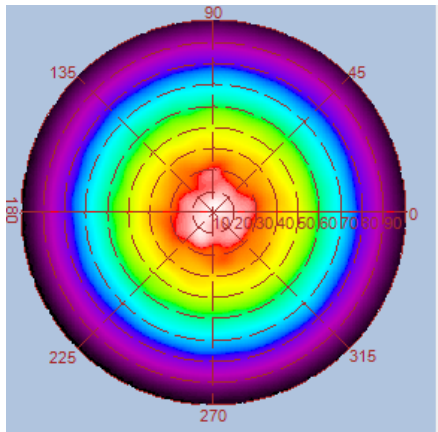
Type	GL-DL06DA-IP-WW	GL-DL06DA-IP-NW	GL-DL06DA-IP-CW
Energy Used	10.8 W		
Rated Life	30,000 Hours		
Input Voltage	100-240V AC		
Power Factor (PF)	0.88 at 120V AC, 0.8 at 240V AC without dimmer		
CCT (color)	3000K	4000K	6000K
Luminous Flux	800 lm	820 lm	890 lm
System Efficacy	74 lm/W	76 lm/W	82 lm/W
CRI (Minimum)	80	80	80
Beam Angle	110°		
Dimension	Φ 161 x 20 mm		
IP Rating	IP54		
Operation Temperature	-20°C ~ +40°C		
Bundled Driver	GP-HS10P-36CA (for 1-10V/PWM/Resistor) (Driver Output : Constant Current 350mA, 36V)		
Net Weight	460 g (with driver)		
Package	10 Boxes / Carton		
Fixture Hole	Φ 152 mm		

Outline / Dimension

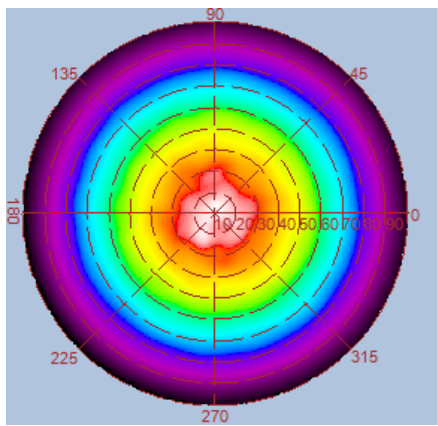
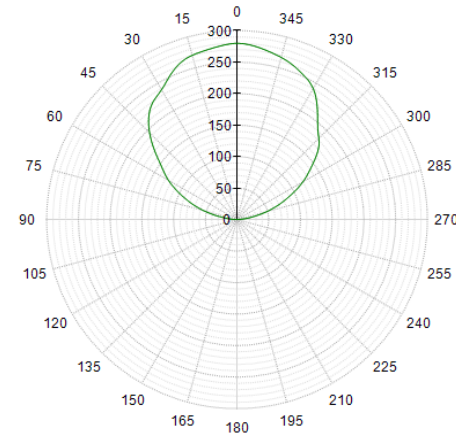


Luminous Intensity Distribution Diagram

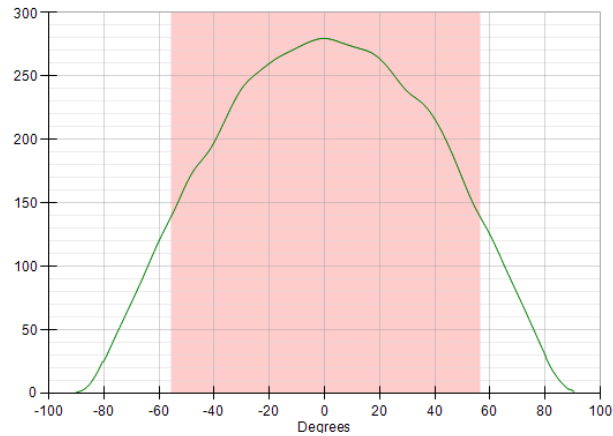
GL-DL06-IP -WW/CCT: 3000K



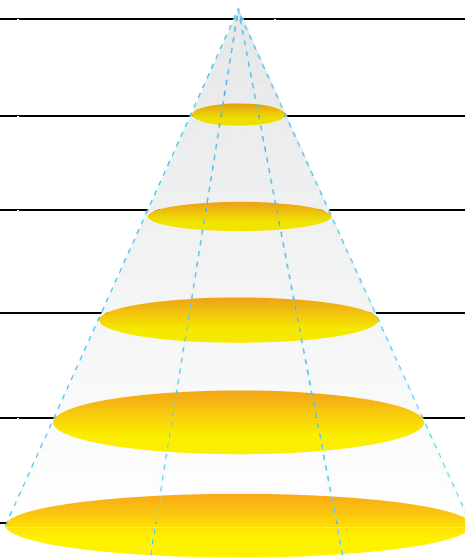
光强度(Candela)



光强度(Candela)

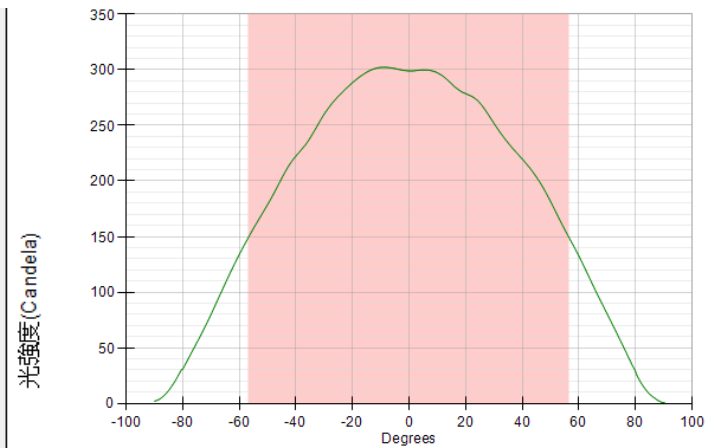
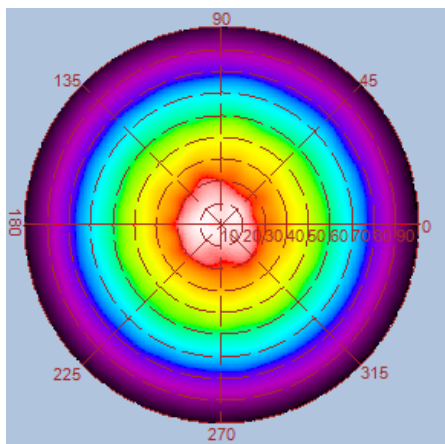
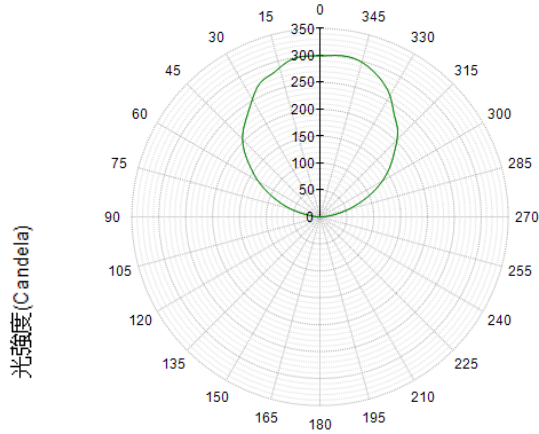
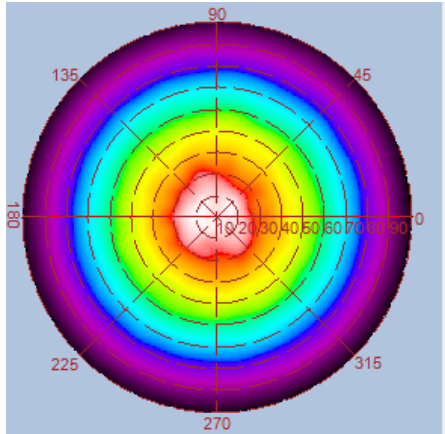


Height	E Avg.	E Max.	Diameter
1.0M	139 Lx	307 Lx	296 cm
2.0M	33 Lx	72 Lx	593 cm
3.0M	14 Lx	31 Lx	889 cm
4.0M	8 Lx	17 Lx	1186 cm
5.0M	5 Lx	11 Lx	1482 cm

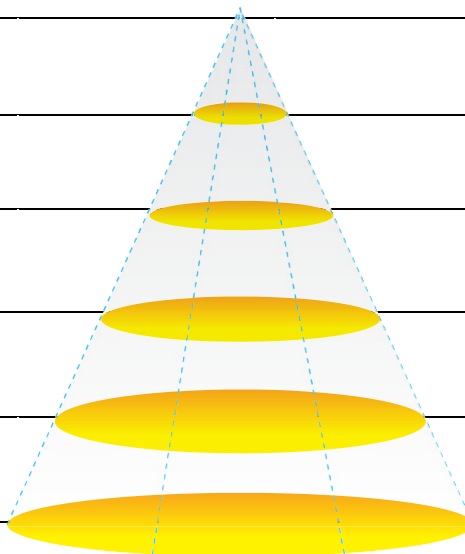


Luminous Intensity Distribution Diagram

GL-DL06-IP-NW/ CCT: 4000K

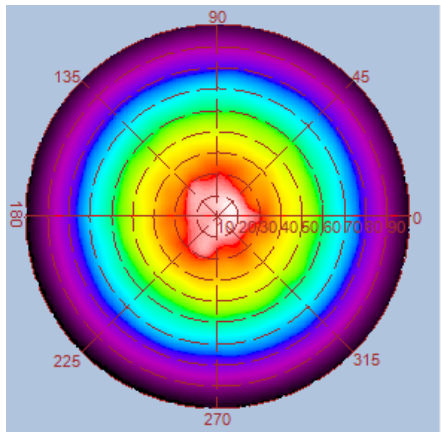


Height	E Avg.	E Max.	Diameter
1.0M	147 Lx	334 Lx	305 cm
2.0M	35 Lx	77 Lx	610 cm
3.0M	15 Lx	34 Lx	915 cm
4.0M	8 Lx	18 Lx	1220 cm
5.0M	5 Lx	12 Lx	1525 cm

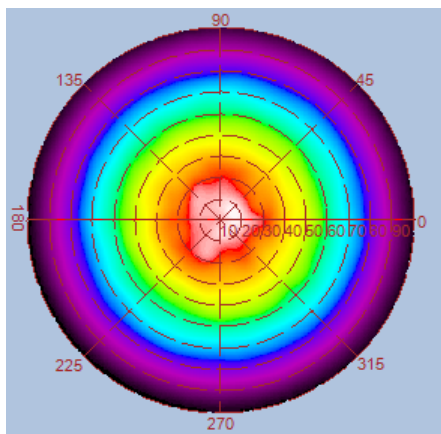
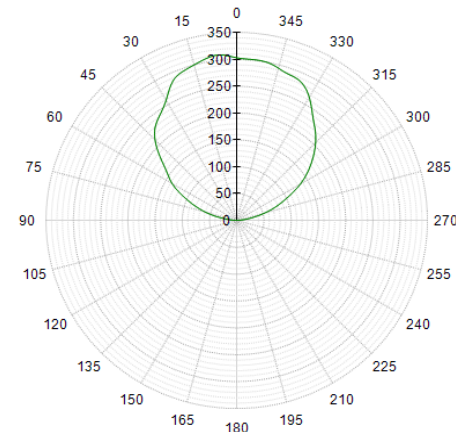


Luminous Intensity Distribution Diagram

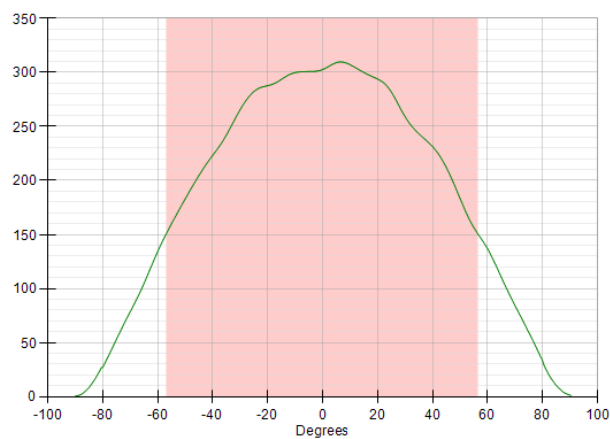
GL-DL06-IP -CW/ CCT: 6000K



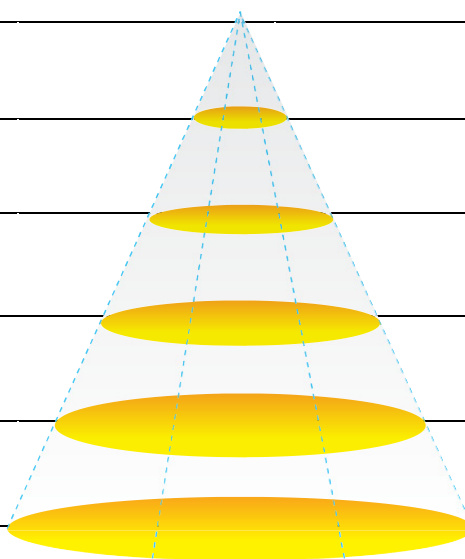
光強度(Candela)



光強度(Candela)



Height	E Avg.	E Max.	Diameter
1.0M	150 Lx	338 Lx	305 cm
2.0M	36 Lx	79 Lx	610 cm
3.0M	15 Lx	34 Lx	915 cm
4.0M	8 Lx	19 Lx	1220 cm
5.0M	5 Lx	12 Lx	1525 cm



Photograph



GlacialLight GL-DL06-IP

- Waterproof (IP54)



GlacialLight GL-DL06-IP

- Waterproof (IP54)