



Features

- One piece, easy installation.
- Can be mounted on nearly any surface: wall or ceiling.
- Die-cast aluminum construction - light and sturdy.
- Color temperatures 3000K/4000K/6000K available.
- Optional rod pendant mounted allows lighting to get closer to the projection object.
- AC Models compatible with AC voltage worldwide.
- DC Models compatible with 11-15V, 22-30V DC.
- There are 4 different models under this series: non-dimmable, 3-in-1 dimmable , AC-TRIAC dimmable, and DC input.



Specifications

GL-DL06-SM (Non-Dimmable)

| Type | GL-DL06-SM-WW | GL-DL06-SM-NW | GL-DL06-SM-CW |
|-----------------------|--|---------------|---------------|
| Energy Used | 10.9 W | | |
| Rated Life | 30,000 Hours | | |
| Input Voltage | 100-240V AC (Driver with cUL Certificate) | | |
| Power Factor (PF) | 0.88 at 120V AC, 0.8 at 240V AC | | |
| CCT (color) | 3000K | 4000K | 6000K |
| Luminous Flux | 900 lm | 920 lm | 980 lm |
| System Efficacy | 83 lm/W | 84 lm/W | 90 lm/W |
| CRI (Minimum) | 80 | 80 | 80 |
| Beam Angle | 110° | | |
| Dimension | Φ 180 x 40 mm | | |
| IP Rating | IP40 | | |
| Operation Temperature | -20°C ~ +40°C | | |
| Bundled Driver | GP-HS10P-36C (Driver Output : Constant Current 350mA, 24~36V) | | |
| Net Weight | 550 g (with driver) | | |
| Package | 10 Boxes / Carton | | |

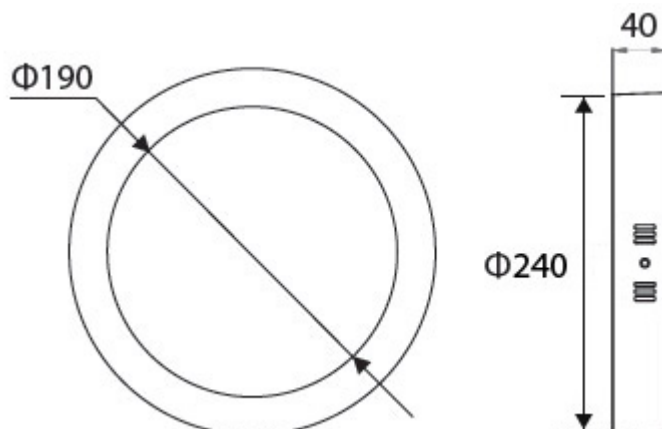
GL-DL06DA-SM (DC- Dimmable 1-10V/ PWM/ Resistor)

| Type | GL-DL06DA-SM-WW | GL-DL06DA-SM-NW | GL-DL06DA-SM-CW |
|-----------------------|---|-----------------|-----------------|
| Energy Used | 10.9 W | | |
| Rated Life | 30,000 Hours | | |
| Input Voltage | 100-240V AC | | |
| Power Factor (PF) | 0.88 at 120V AC, 0.8 at 240V AC | | |
| CCT (color) | 3000K | 4000K | 6000K |
| Luminous Flux | 900 lm | 920 lm | 980 lm |
| System Efficacy | 83 lm/W | 84 lm/W | 90 lm/W |
| CRI (Minimum) | 80 | 80 | 80 |
| Beam Angle | 110° | | |
| Dimension | Φ 180 x 40 mm | | |
| IP Rating | IP40 | | |
| Operation Temperature | -20°C ~ +40°C | | |
| Bundled Driver | GP-HS10P-36CA (for 1-10V/PWM/Resistor) (Driver Output : Constant Current 350mA, 36V) | | |
| Net Weight | 550 g (with driver) | | |
| Package | 10 Boxes / Carton | | |

DL06Dx-SM (AC-TRIAC dimmable)

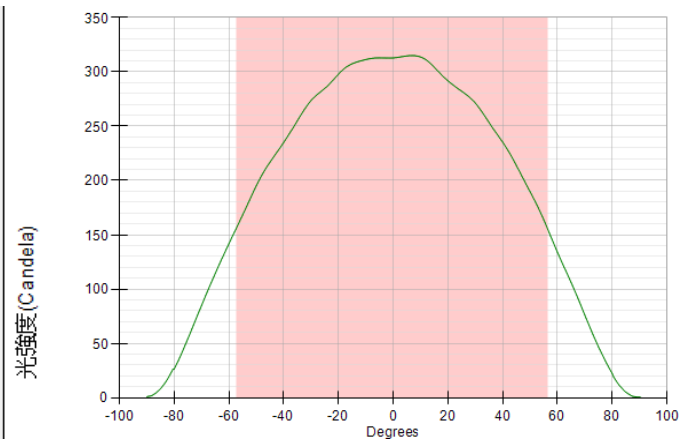
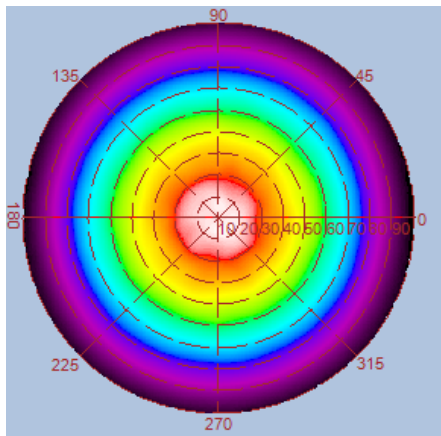
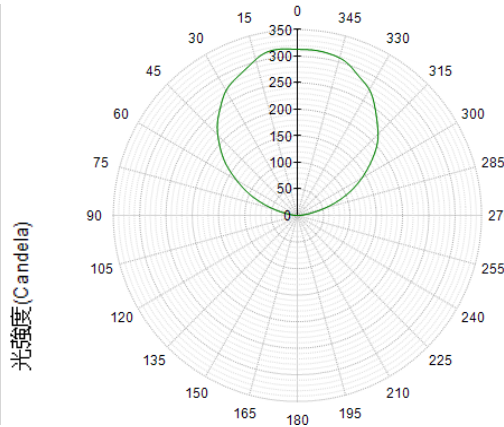
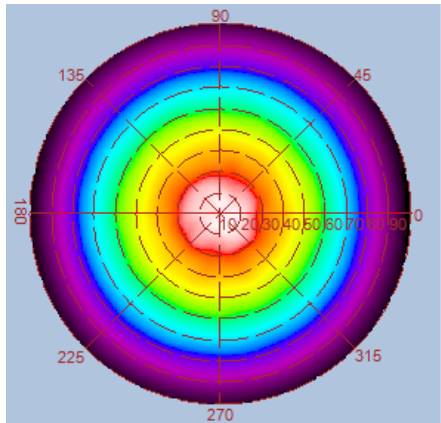
| Type | GL-DL06DL-SM-WW GL-DL06DH-SM-WW | GL-DL06DL-SM-NW GL-DL06DH-SM-NW | GL-DL06DL-SM-CW GL-DL06DH-SM-CW |
|-----------------------|---|------------------------------------|------------------------------------|
| Energy Used | 10.9 W | | |
| Rated Life | 30,000 Hours | | |
| Input Voltage | 100-120V AC (GL-DL06DL-SM) 200-240V AC (GL-DL06DH-SM) | | |
| Power Factor (PF) | 0.8 at 120V AC / 0.7 at 240V AC (without dimmer) | | |
| CCT (color) | 3000K | 4000K | 6000K |
| Luminous Flux | 900 lm | 920 lm | 980 lm |
| System Efficacy | 83 lm/W | 84 lm/W | 90 lm/W |
| CRI (Minimum) | 80 | 80 | 80 |
| Beam Angle | 110° | | |
| Dimension | Φ 180 x 40 mm | | |
| IP Rating | IP40 | | |
| Operation Temperature | -20°C ~ +40°C | | |
| Bundled Driver | GP-TS10P-30L (for AC-TRIAC 100-120V AC) GP-TS10P-30H (for AC-TRIAC 200-240V AC) (Driver Output : Constant Current 350mA, 30V) | | |
| Net Weight | 550 g (with driver) | | |
| Package | 10 Boxes / Carton | | |

Outline / Dimension

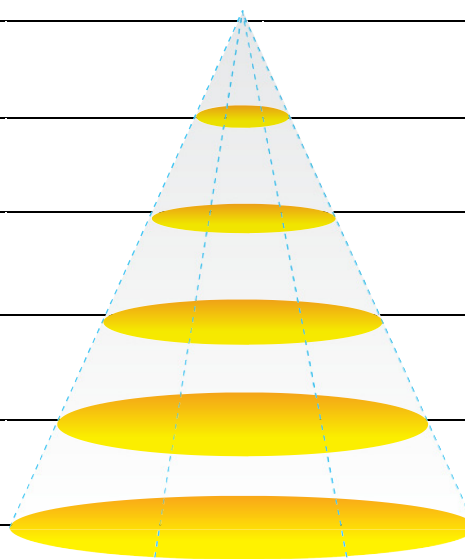


Luminous Intensity Distribution Diagram

GL-DL06 -SM-WW/ CCT : 3000K

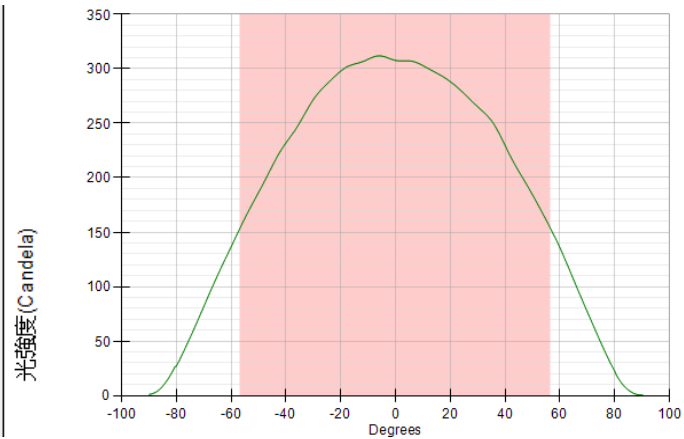
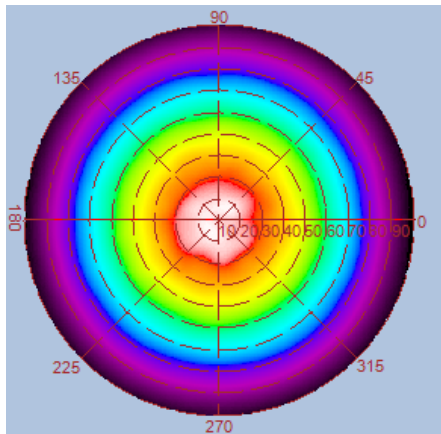
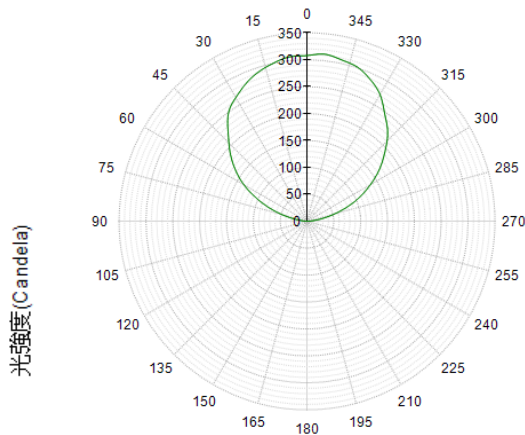
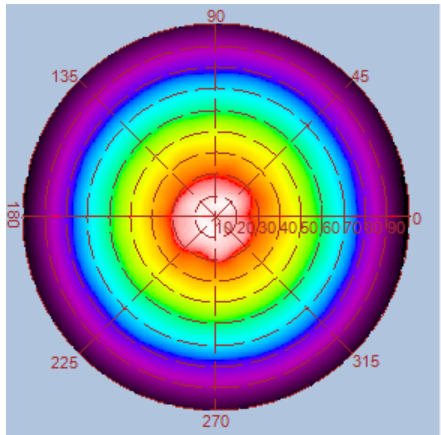


| Height | E Avg. | E Max. | Diameter |
|--------|--------|--------|----------|
| 1.0M | 152 Lx | 341 Lx | 307 cm |
| 2.0M | 37 Lx | 81 Lx | 615 cm |
| 3.0M | 16 Lx | 35 Lx | 923 cm |
| 4.0M | 9 Lx | 19 Lx | 1231 cm |
| 5.0M | 5 Lx | 12 Lx | 1529 cm |

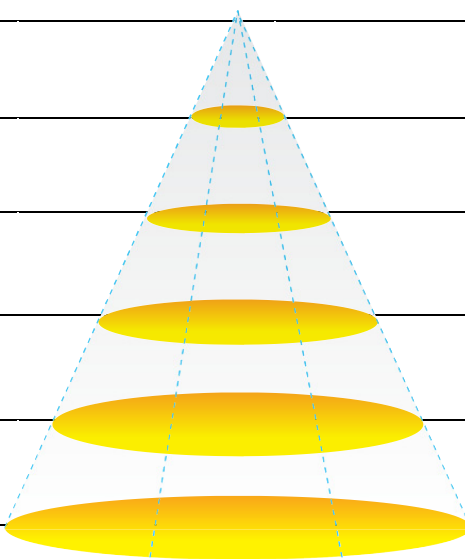


Luminous Intensity Distribution Diagram

GL-DL06 -SM-NW/ CCT : 4000K

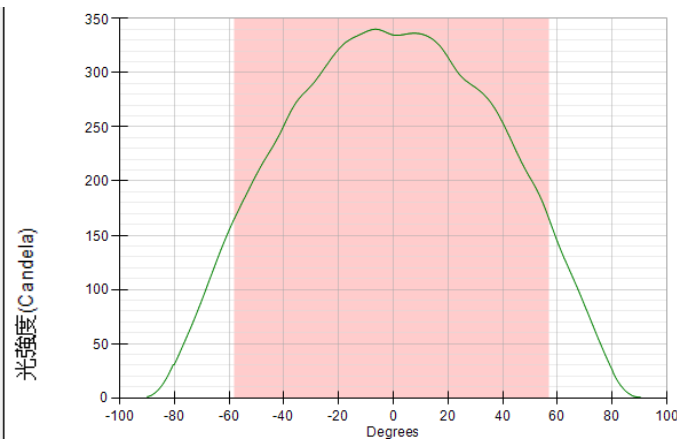
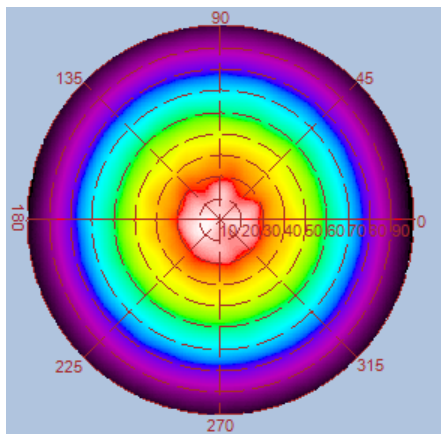
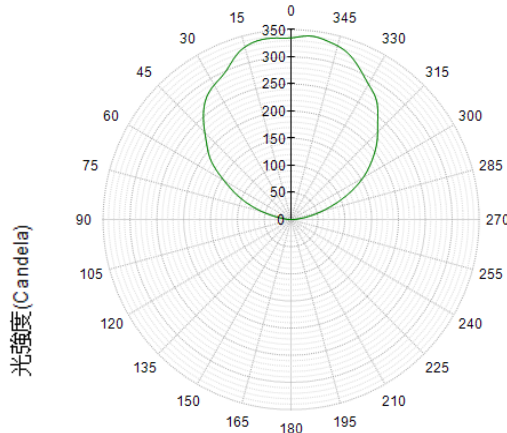
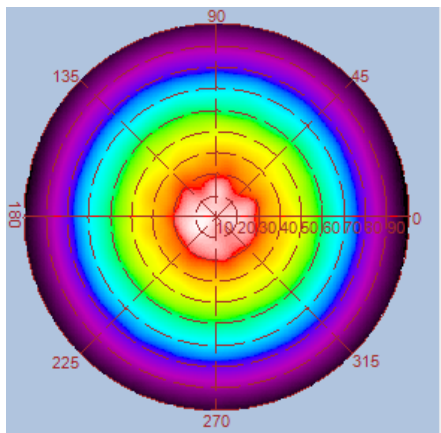


| Height | E Avg. | E Max. | Diameter |
|--------|--------|--------|----------|
| 1.0M | 151 Lx | 337 Lx | 305 cm |
| 2.0M | 36 Lx | 79 Lx | 610 cm |
| 3.0M | 16 Lx | 34 Lx | 915 cm |
| 4.0M | 9 Lx | 19 Lx | 1220 cm |
| 5.0M | 5 Lx | 12 Lx | 1525 cm |

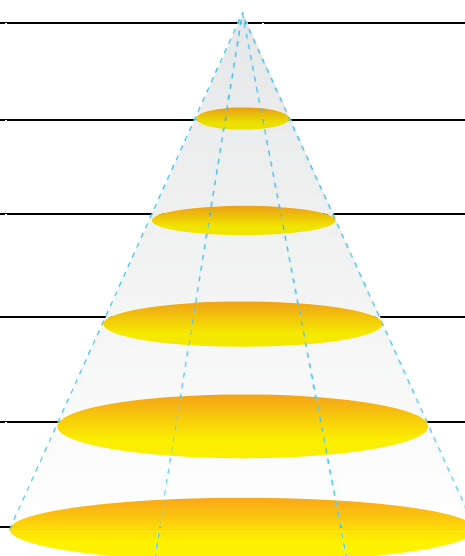


Luminous Intensity Distribution Diagram

GL-DL06-SM –CW /CCT : 6000K



| Height | E Avg. | E Max. | Diameter |
|--------|--------|--------|----------|
| 1.0M | 160 Lx | 366 Lx | 313 cm |
| 2.0M | 38 Lx | 86 Lx | 627 cm |
| 3.0M | 17 Lx | 37 Lx | 941 cm |
| 4.0M | 9 Lx | 20 Lx | 1255 cm |
| 5.0M | 6 Lx | 13 Lx | 1569 cm |



Package

