

# Ceiling Down Light Cover Accessory Installation Manual

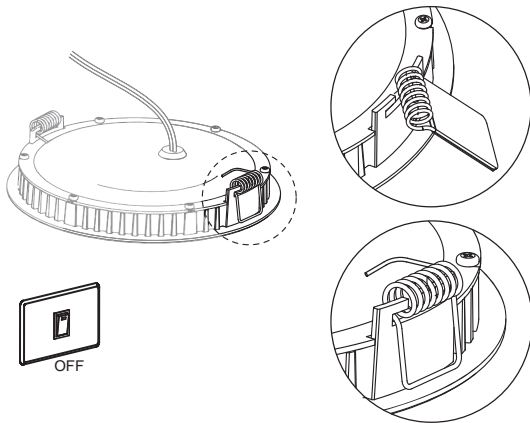
Thank you for choosing the GL-DL06-IP series lighting trim extension. In order to prevent any accidents, please install the lighting trim extension according to the following instructions. Please, be advised, if you do not follow these instructions or use the product for other purposes, the warranty will become invalid. We do not take any responsibility for any possible product damage caused by improper installation or usage.



## Installation Steps

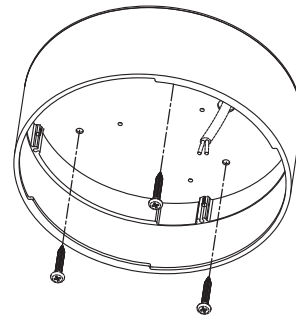
### Step 1.

Replace the spring



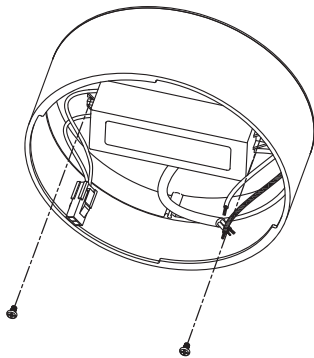
### Step 2.

Fix the trim extension to the ceiling



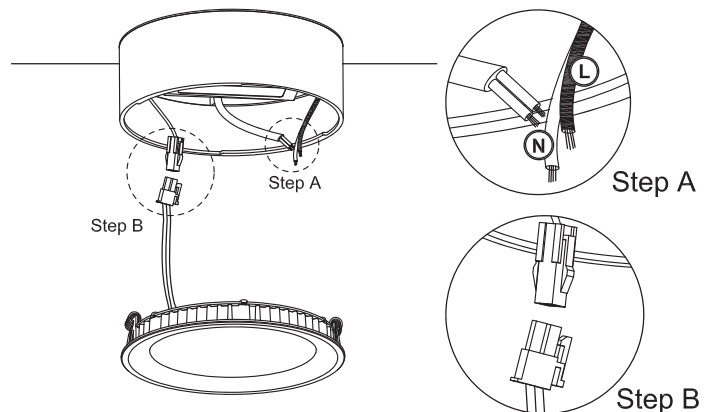
### Step 3.

Install the driver into the trim extension



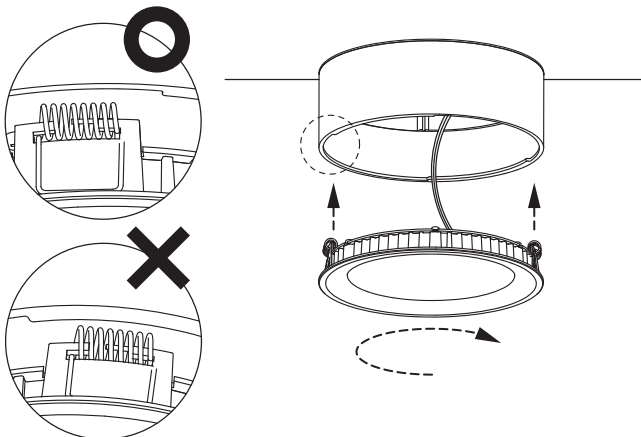
### Step 4.

Connect the power cord to the driver



### Step 5.

Install the lamp into the trim extension



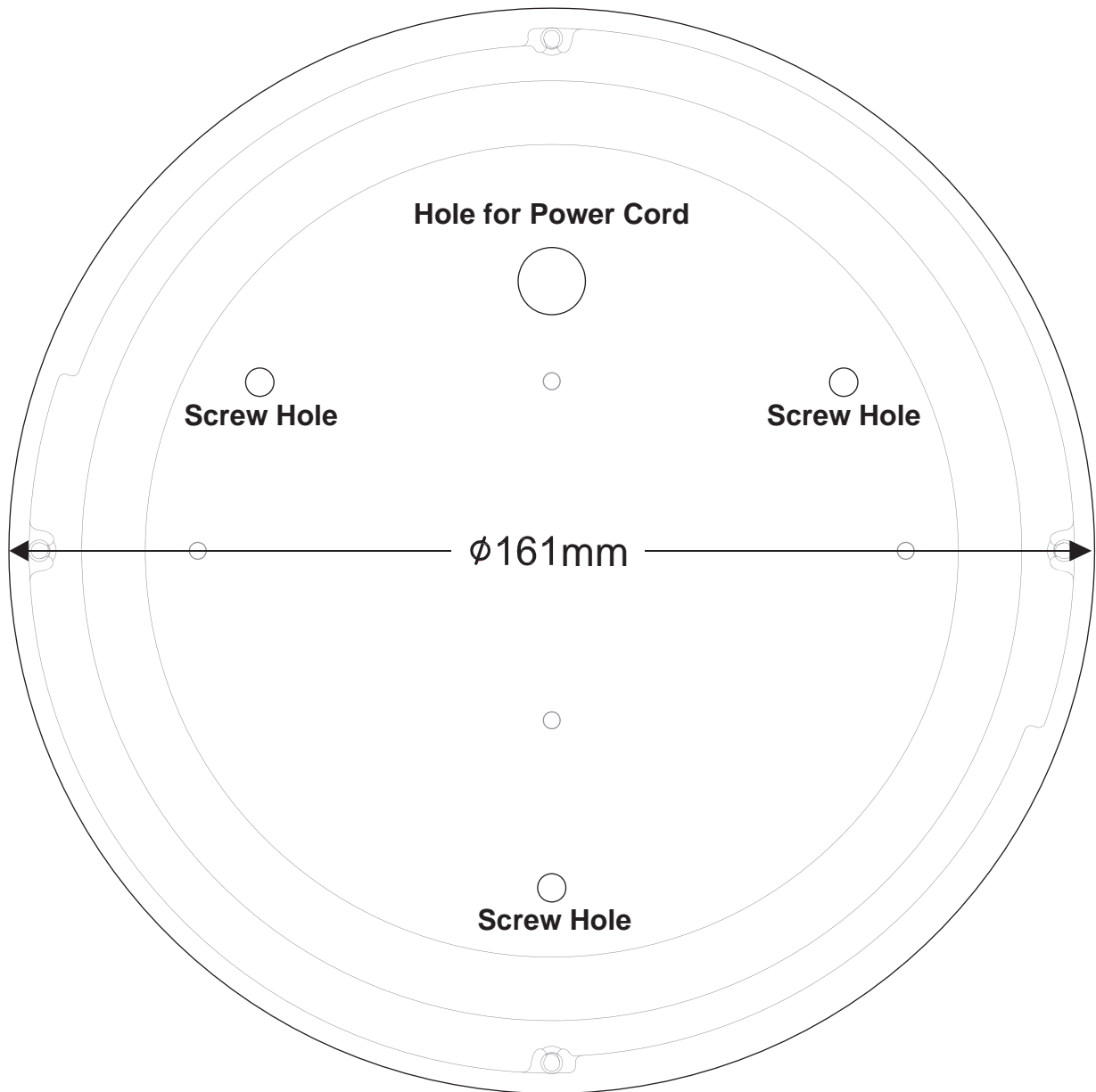
## Important

Make sure to turn off the power before installing. Some countries require electrical installation to be done by a licensed professional electrician. Please contact your local electric agency for assistance.

## Installation description

1. Remove the original black spring from the fixture, and replace it with the short spring in the accessory kit.  
Please make sure the spring is placed properly as shown in the picture.
2. Make sure the power cord goes through the power cord hole, and fix the trim extension to the ceiling or wall.  
(It is recommended to use the M4 screws, please refer to the page on the other side for the screws location)
3. Fix the driver into the trim extension.
4. Connect the power cord to the driver and lamp.
  - A. First connect the driver to power cord.
  - B. Then attach the lamp to the driver.
5. Insert the lamp vertically into the trim extension and turn clockwise. Stop until you can't turn any more.  
(Make sure the spring is positioned properly in the notch before placing the lamp in the trim extension)

## Mounting Diagram



## Installation

### 1. Installation for wooden ceilings or walls:

Fix trim extension with wood screws directly to the ceiling or wall.

### 2. Installation for concrete ceilings or walls:

- Refer to the picture above. Place the trim extension to where you want to install it and mark the screw hole location.
- Use a drill to drill a 6mm hole and insert the plastic screw anchor into the concrete wall as in the picture show below.  
Use a hammer to lightly tap the anchor into the hole. Repeat for each hole.
- Screw the screws into the plastic screw anchor, fixing the trim extension to the wall or ceiling.

