



Features

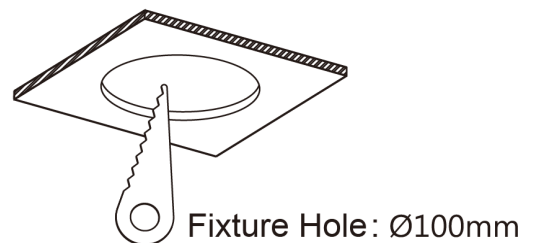
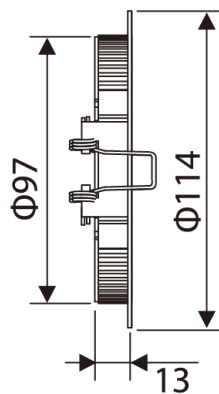
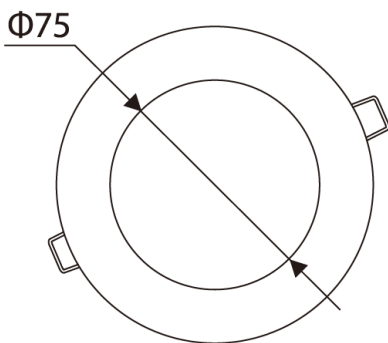
- The GL-DL04LD for indoor applications
- DC input
- 8 to 18W energy consumption
- Energy efficient and preventing possible energy waste
- All-in-one bulb and fixture
- Directly compatible with 12V and 24V solar panels
- Slim, compact and fashionable design
- Very low power consumption
- No UV or IR radiation
- Bundled driver with OVP/SCP/UVLO functions
- Passed IEC 60598-1(2008) 、 IEC 60695-2-11 850°C glow wire test (**optional**)



Specifications

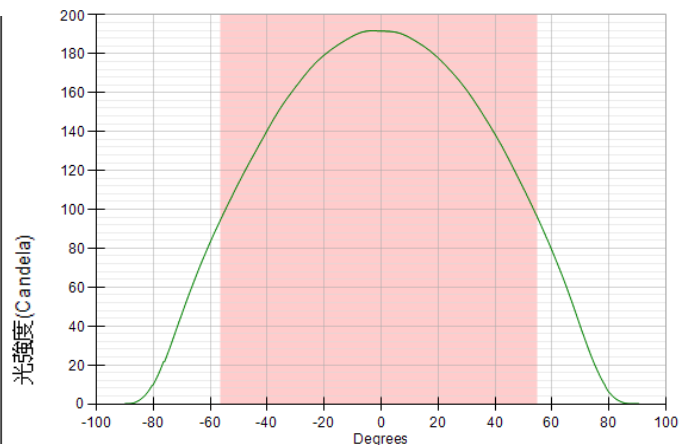
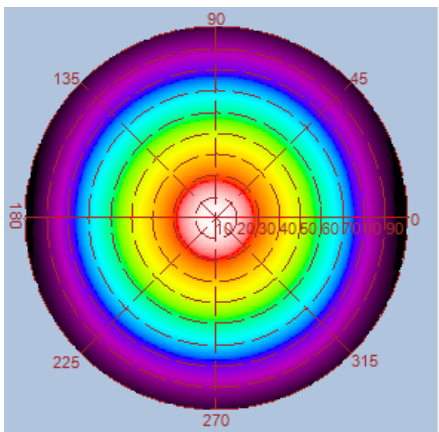
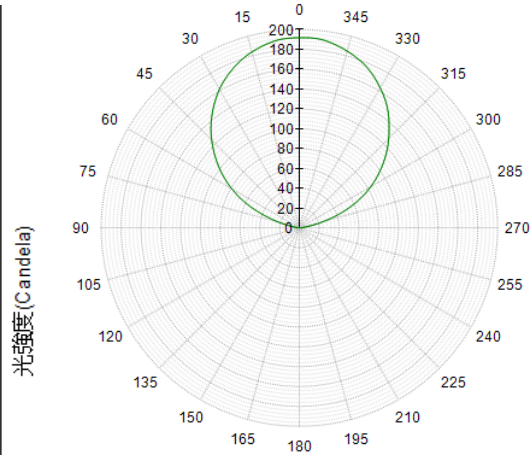
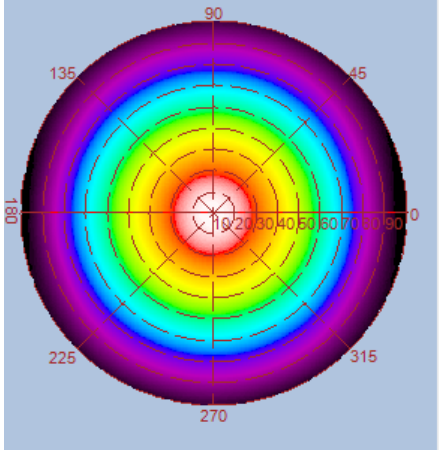
| Type | GL-DL04LD-WW | GL-DL04LD-NW | GL-DL04LD-CW |
|-----------------------|--|--------------|--------------|
| Energy Used | 7.5 W | | |
| Rated Life | 30,000 Hours | | |
| Input Voltage | 11-15V DC / 22-30V DC | | |
| CCT (color) | 3000K | 4000K | 6000K |
| Luminous Flux | 530 lm | 550 lm | 580 lm |
| System Efficacy | 70 lm/W | 73 lm/W | 77 lm/W |
| CRI (Minimum) | 80 | 80 | 80 |
| Beam Angle | 110° | | |
| Dimension | Φ 114 x 13mm | | |
| IP Rating | IP40 | | |
| Operation Temperature | -20°C ~ +40°C | | |
| Bundled Driver | GP-LD10-30C (Driver Output: Constant Current 350mA, 30V) | | |
| Net. Weight | 220 g (with driver) | | |
| Package | 20 Boxes / Carton | | |
| Fixture Hole | Φ 100 mm | | |

Outline / Dimension

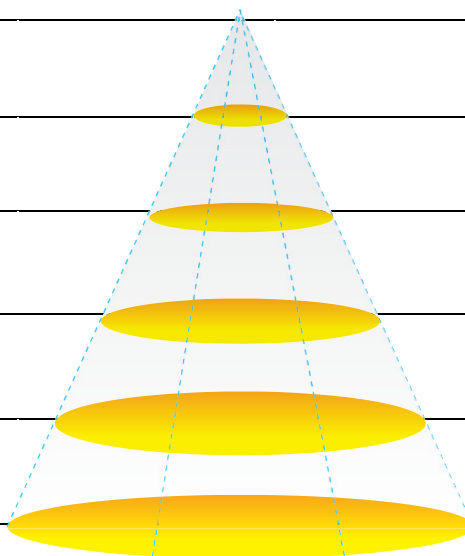


Luminous Intensity Distribution Diagram

GL-DL04 – WW /CCT : 3000K

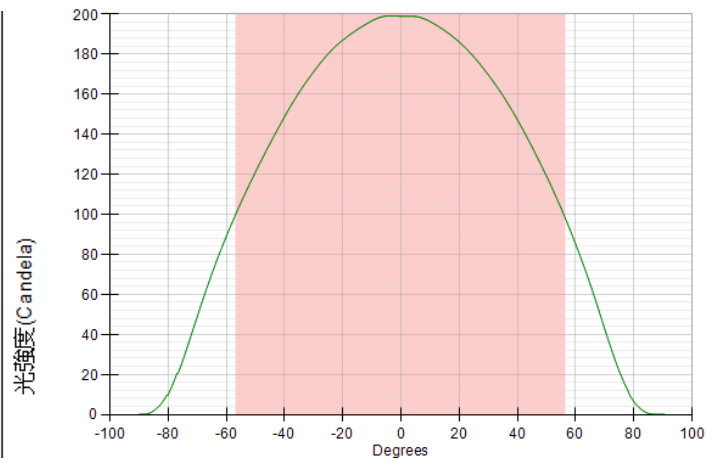
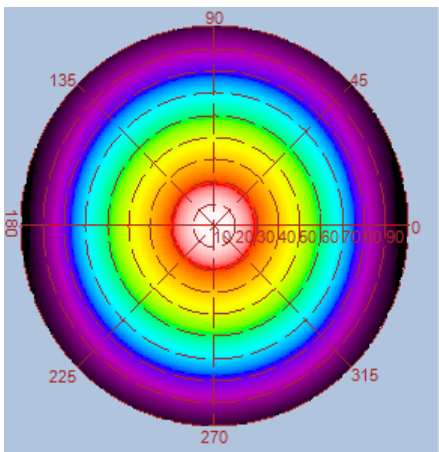
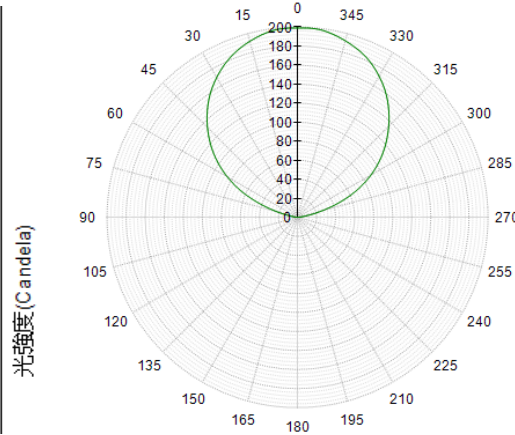
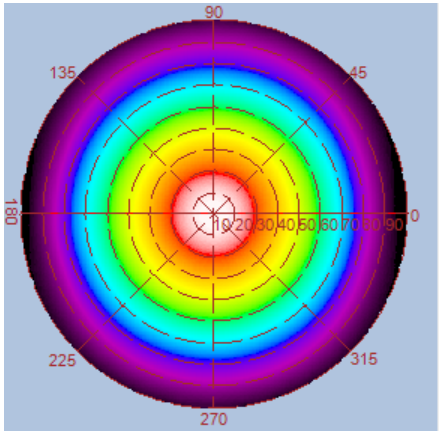


| Height | E Avg. | E Max. | Diameter |
|--------|--------|--------|----------|
| 1.0M | 95 Lx | 208 Lx | 293 cm |
| 2.0M | 23 Lx | 49 Lx | 587 cm |
| 3.0M | 10 Lx | 21 Lx | 881 cm |
| 4.0M | 5 Lx | 12 Lx | 1174 cm |
| 5.0M | 3 Lx | 7 Lx | 1468 cm |

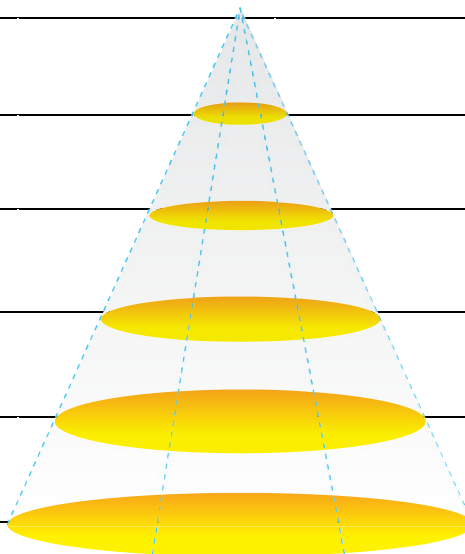


Luminous Intensity Distribution Diagram

GL-DL04 – NW/CCT : 4000K

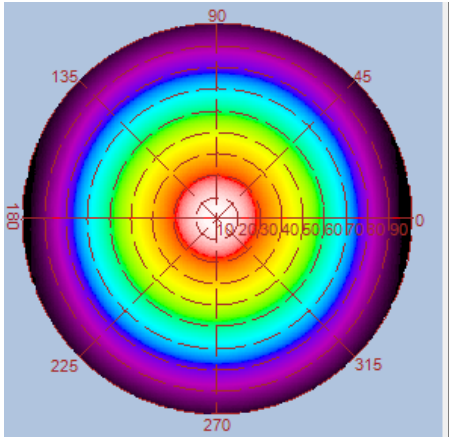


| Height | E Avg. | E Max. | Diameter |
|--------|--------|--------|----------|
| 1.0M | 96 Lx | 214 Lx | 305 cm |
| 2.0M | 23 Lx | 51 Lx | 610 cm |
| 3.0M | 10 Lx | 22 Lx | 915 cm |
| 4.0M | 5 Lx | 12 Lx | 1220 cm |
| 5.0M | 3 Lx | 7 Lx | 1525 cm |

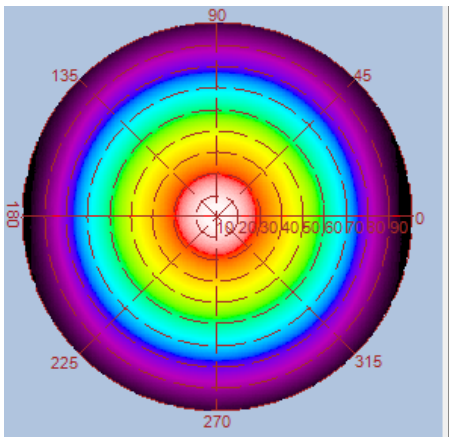
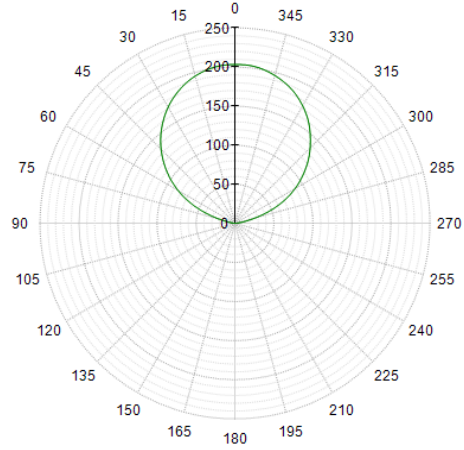


Luminous Intensity Distribution Diagram

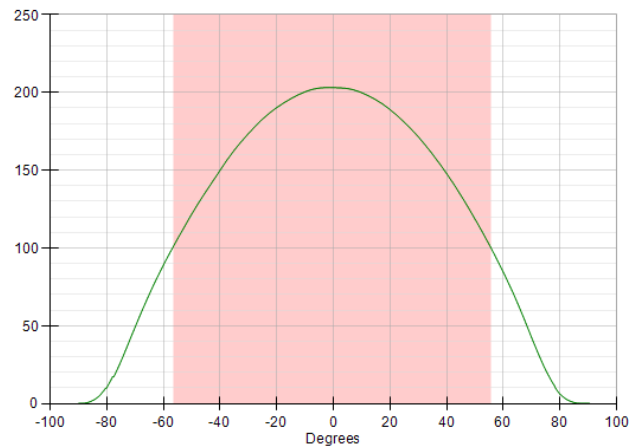
GL-DL04 – CW / CCT : 6000K



光強度 (Candela)



光強度 (Candela)



| Height | E Avg. | E Max. | Diameter |
|--------|--------|--------|----------|
| 1.0M | 100 Lx | 221 Lx | 296 cm |
| 2.0M | 24 Lx | 52 Lx | 593 cm |
| 3.0M | 10 Lx | 22 Lx | 889 cm |
| 4.0M | 5 Lx | 12 Lx | 1186 cm |
| 5.0M | 3 Lx | 8 Lx | 1482 cm |

