



Features

- High system efficacy up to 124 lm/W.
- 23,000 lumen output for high bay lighting and outdoor lighting.
- 3.9 kg lightweight design.
- IP66 rated rugged for outdoor use.
- 70 degree Lens and 120 degree Lens are available.
- High bay model features dual cable design for added safety.
- Lampshades available for 60 degree and 120 degree. (optional accessory)
- Outdoor-ready 180 degree rotating mounting bracket available. (optional accessory)
- Optional Tulip I Lux Enhancer creates 180% Lux with tighter beam angle and increased throw.



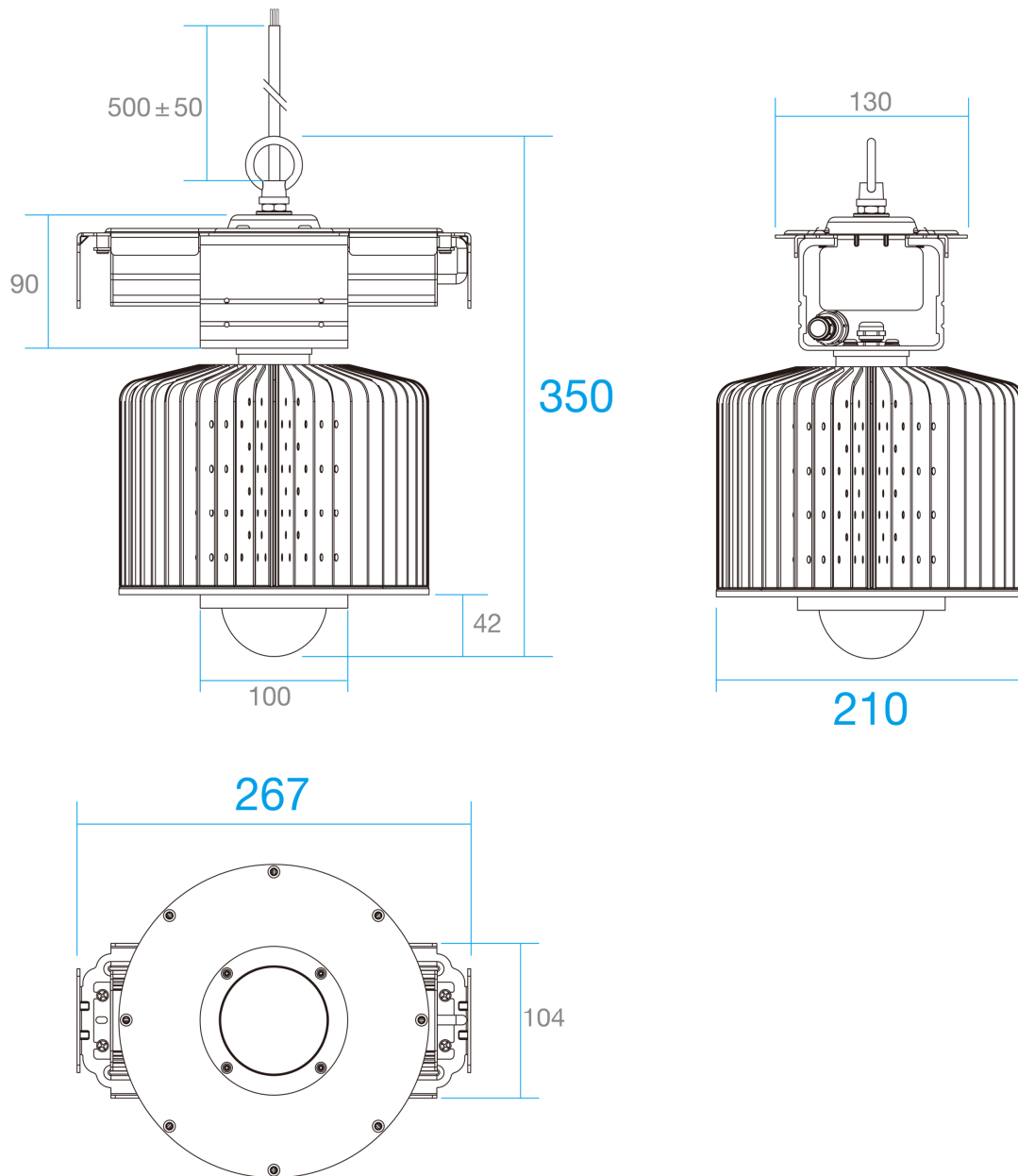
Specifications

Type	GL-BL190-WW	GL- BL190-NW	GL- BL190-CW
Energy Used	185W		
Rated Life	30,000 Hours		
Input Voltage	100-240V AC Support 277V AC for North America only *(Note 1)		
Power Factor (PF)	0.98 at 120V AC, 0.96 at 240V AC		
CCT (color)	3000K	4000K	5000K
Luminous Flux	21400 lm	22200 lm	23000 lm
System Efficacy	116 lm/W	120 lm/W	124 lm/W
CRI (Minimum)	80	80	80
Beam Angle	70° / 120° (Without Lampshade)		
Dimension	267 x Φ210 x 350 mm (Without Lampshade)		
IP Rating	IP66		
Operation Temperature	-40℃ ~ +50℃ *(Note 2)		
Bundled Driver	GP-LS200P-60 1E (Driver Output : Constant Current 3.2A , 60V)		
Net Weight	3.9 kg (Without Lampshade)		
Package	1 Carton		
*Note 1: Input Voltage Range (90-295V AC)			
*Note 2: -40℃ ~ -20℃ (Support for 200-240V AC Input Voltage)			

70D Lens with LUX Enhancer

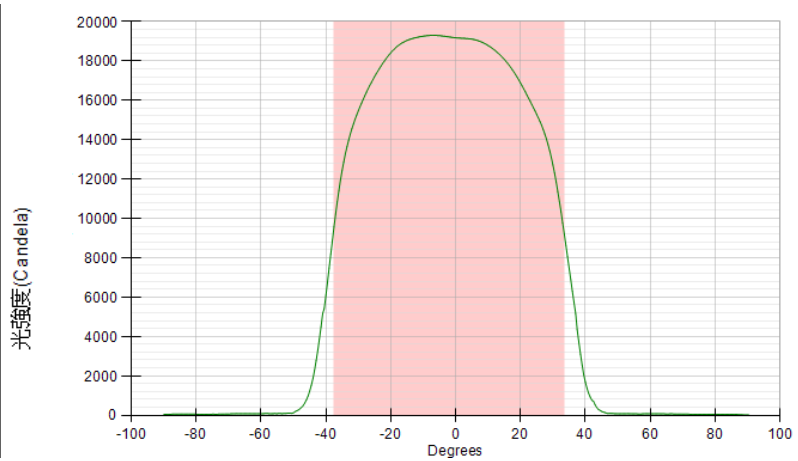
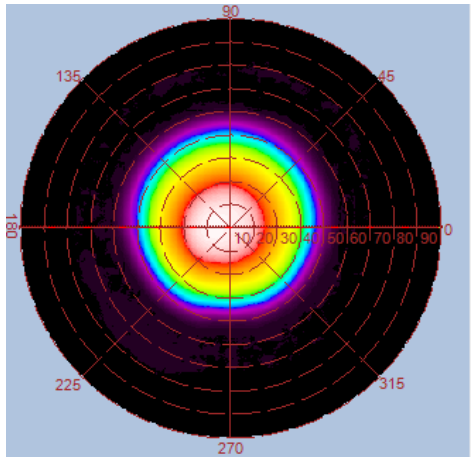
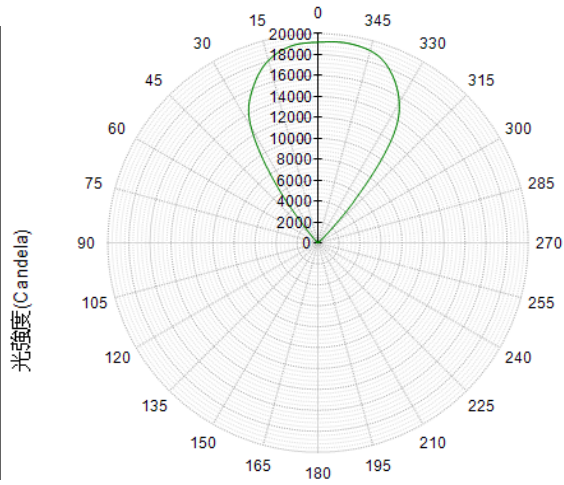
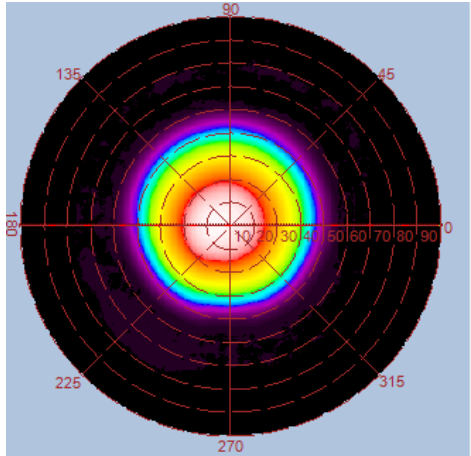
Type	GL-BL190-WW	GL- BL190-NW	GL- BL190-CW
Energy Used	185W		
Rated Life	30,000 Hours		
Input Voltage	100-240V AC Support 277V AC for North America only *(Note 1)		
Power Factor (PF)	0.98 at 120V AC, 0.96 at 240V AC		
CCT (color)	3000K	4000K	5000K
Luminous Flux	18500 lm	19300 lm	20000 lm
System Efficacy	100 lm/W	104 lm/W	108 lm/W
CRI (Minimum)	80	80	80
Beam Angle	45° (Without Lampshade)		
Dimension	267 x Ø 210 x 402 mm (With Lux enhancer)		
IP Rating	IP66		
Operation Temperature	-40°C ~ +50°C *(Note 2)		
Bundled Driver	GP-LS200P-60 1E (Driver Output : Constant Current 3.2A , 60V)		
Net Weight	4.1 kg (Without Lampshade)		
Package	1 Carton		
*Note 1: Input Voltage Range (90-295V AC)			
*Note 2: -40°C ~ -20°C (Support for 200-240V AC Input Voltage)			

Outline / Dimension

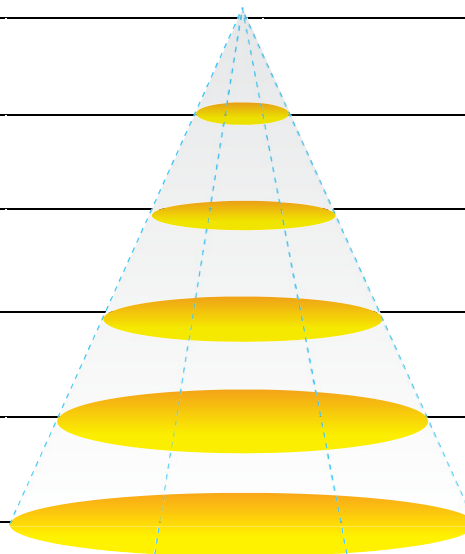


Luminous Intensity Distribution Diagram

GL-BL190-WW-70D / CCT : 3000K

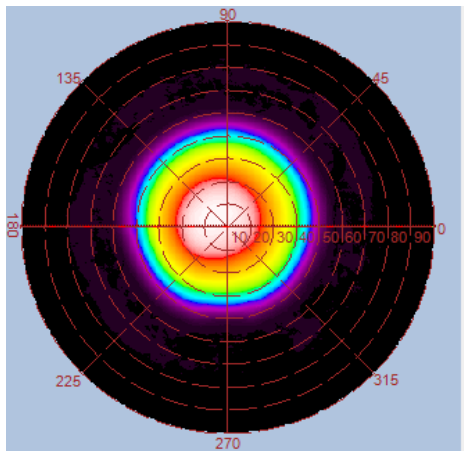


Height	E Avg.	E Max.	Diameter
1.0M	14463 Lx	20660 Lx	142 cm
2.0M	3532 Lx	4970 Lx	285 cm
3.0M	1558 Lx	2177 Lx	427 cm
4.0M	873 Lx	1215 Lx	570 cm
5.0M	557 Lx	772 Lx	713 cm

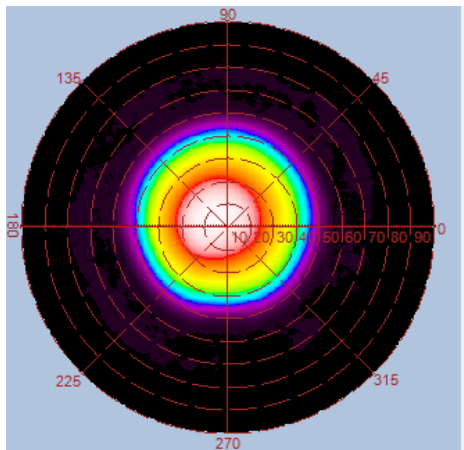
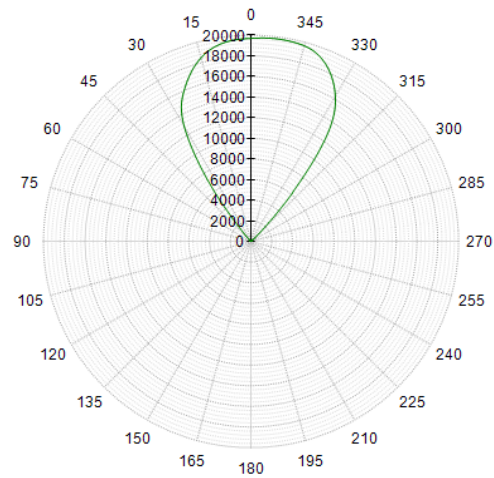


Luminous Intensity Distribution Diagram

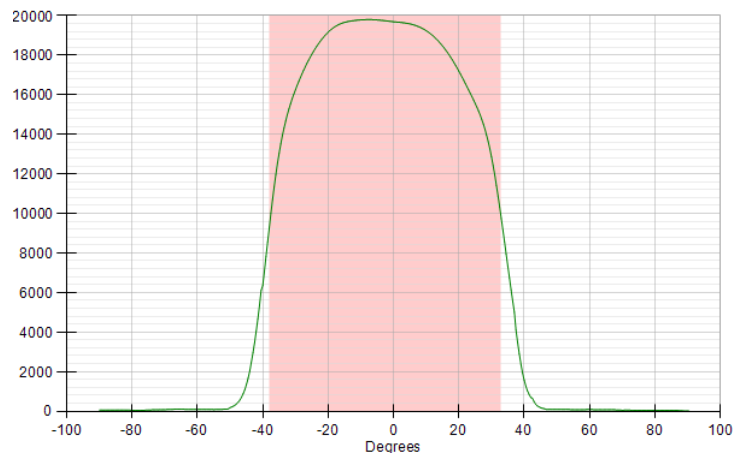
GL-BL190-NW-70D / CCT : 4000K



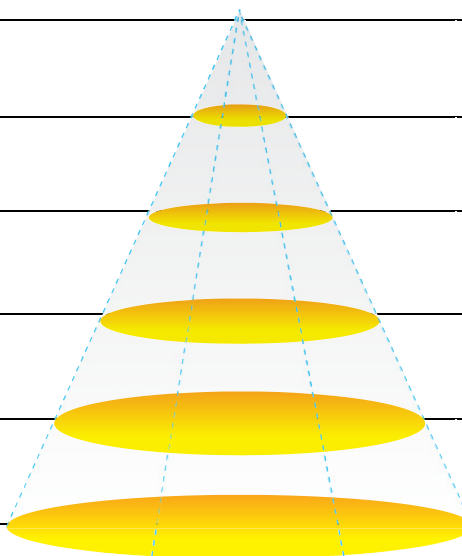
光强度(Candela)



光强度(Candela)

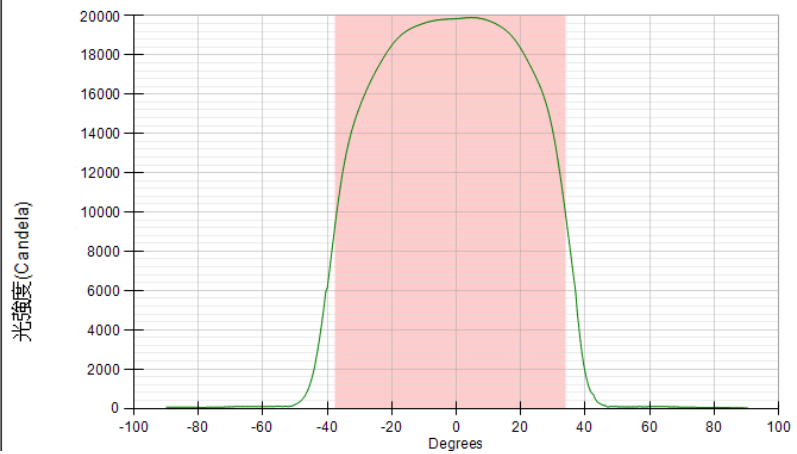
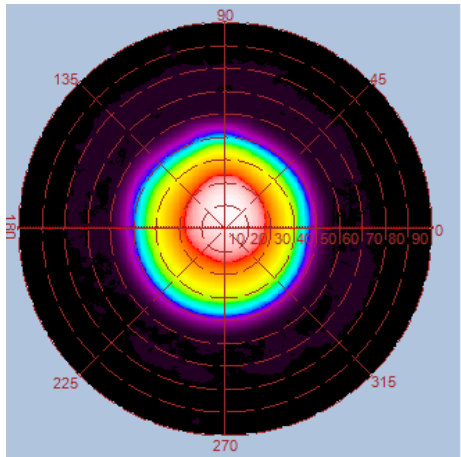
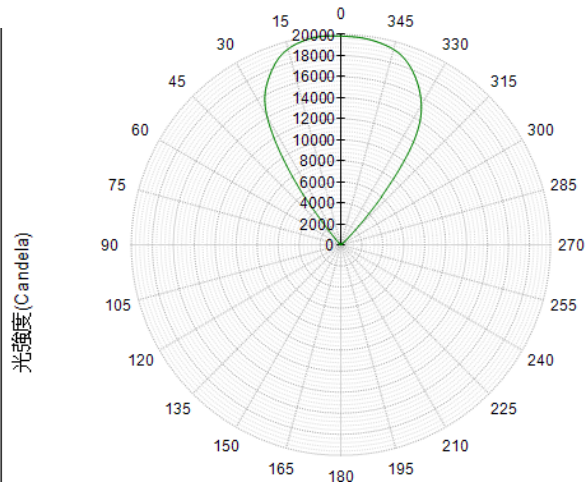
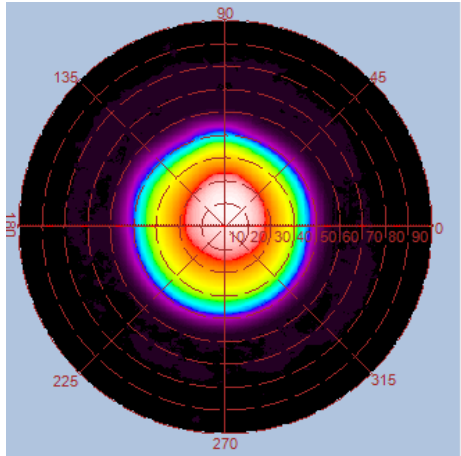


Height	E Avg.	E Max.	Diameter
1.0M	14881 Lx	21282 Lx	142 cm
2.0M	3635 Lx	5083 Lx	285 cm
3.0M	1601 Lx	2234 Lx	427 cm
4.0M	899 Lx	1241 Lx	570 cm
5.0M	572 Lx	791 Lx	713 cm

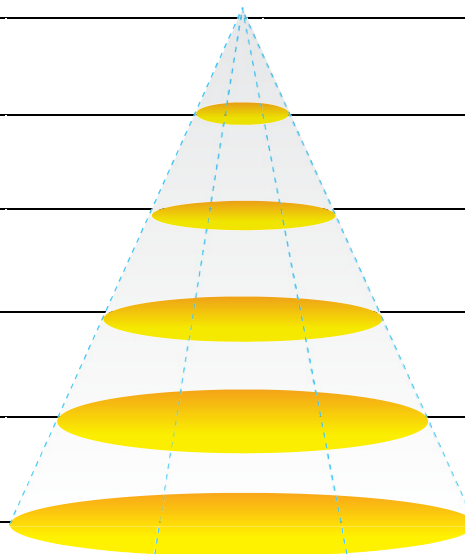


Luminous Intensity Distribution Diagram

GL-BL190-CW-70D / CCT : 5000K

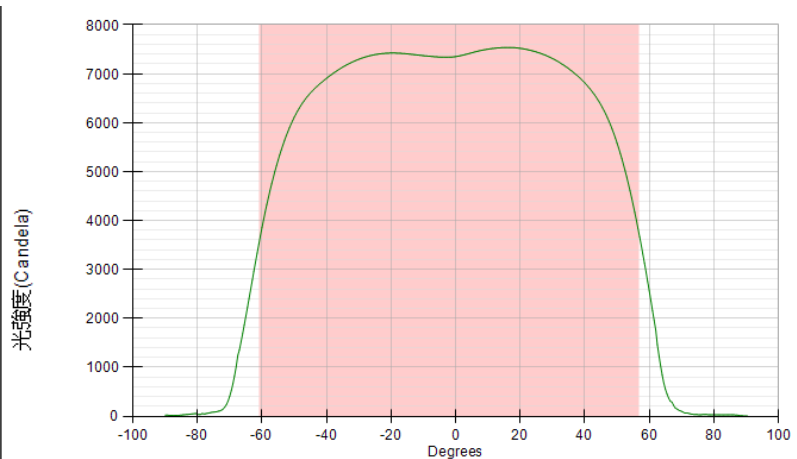
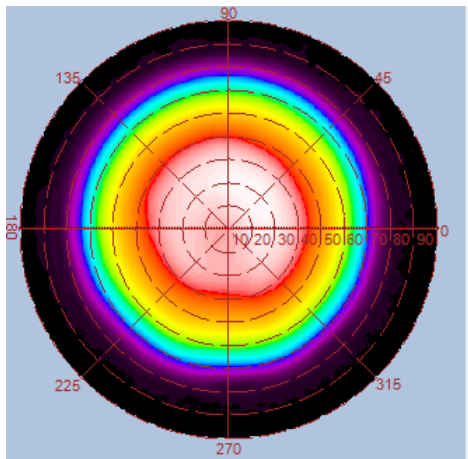
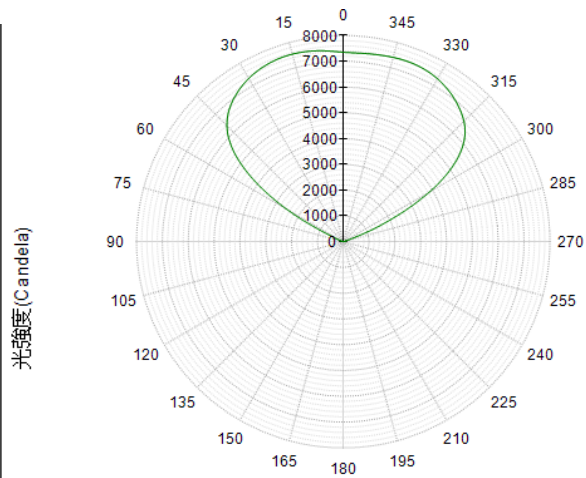
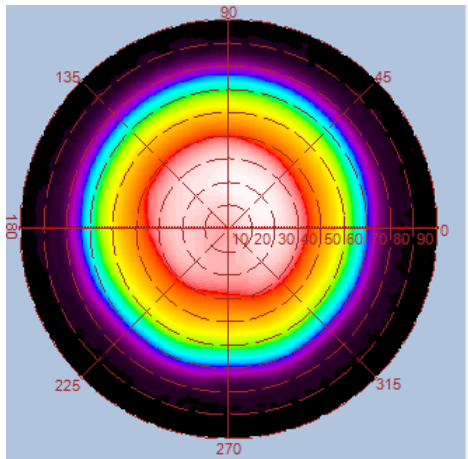


Height	E Avg.	E Max.	Diameter
1.0M	15241 Lx	22443 Lx	143 cm
2.0M	3691 Lx	5226 Lx	287 cm
3.0M	1619 Lx	2260 Lx	431 cm
4.0M	907 Lx	1263 Lx	575 cm
5.0M	579 Lx	806 Lx	719 cm

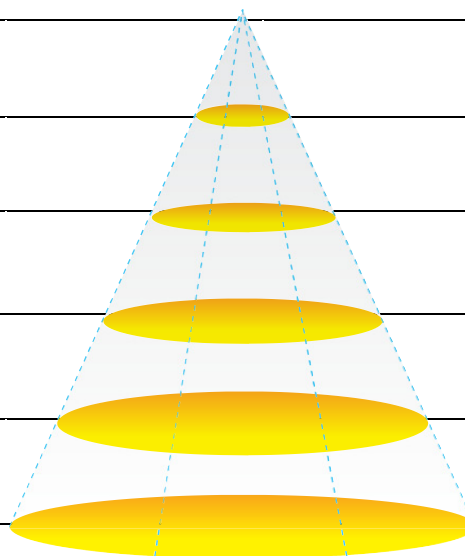


Luminous Intensity Distribution Diagram

GL-BL190-WW-120D / CCT : 3000K

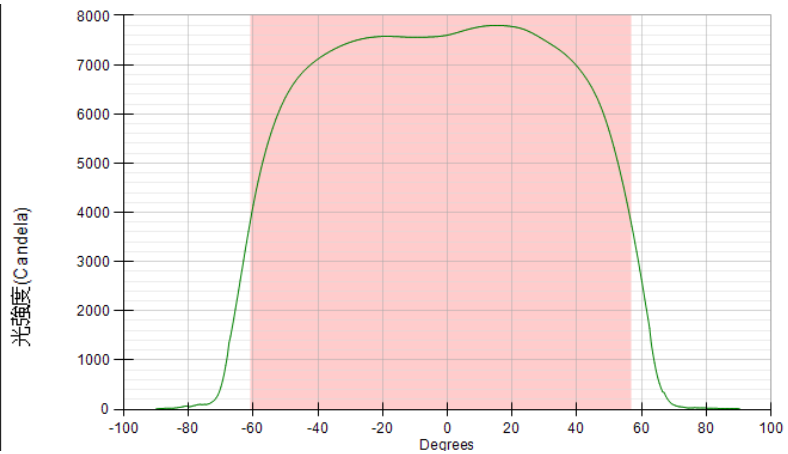
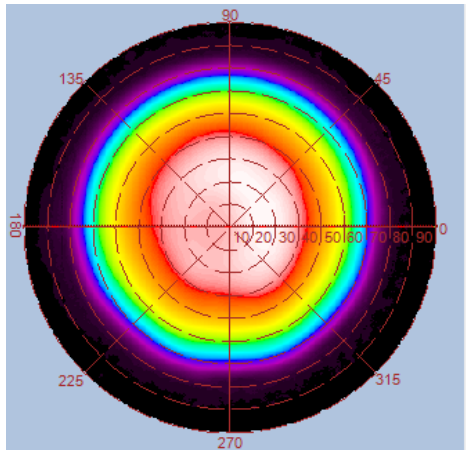
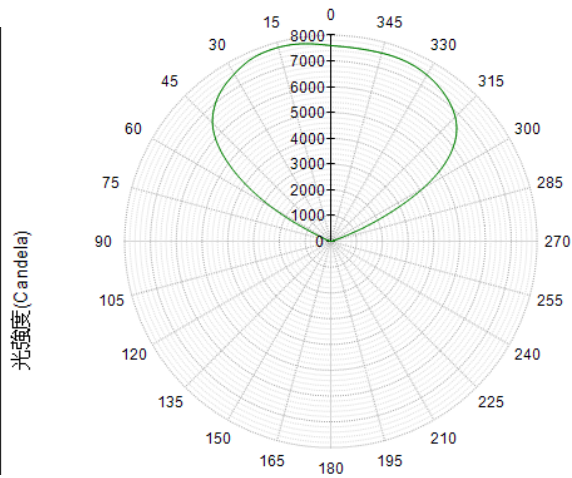
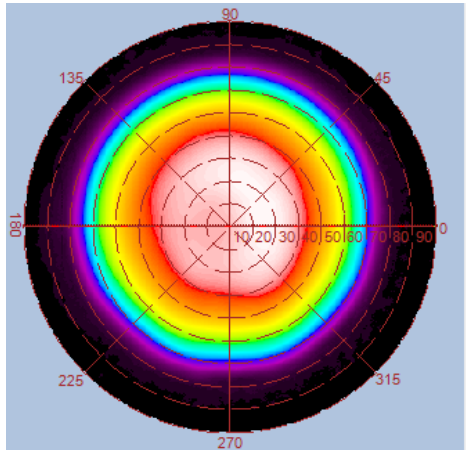


Height	E Avg.	E Max.	Diameter
1.0M	3622 Lx	7666 Lx	332 cm
2.0M	890 Lx	1856 Lx	665 cm
3.0M	393 Lx	815 Lx	998 cm
4.0M	220 Lx	454 Lx	1331 cm
5.0M	140 Lx	291 Lx	1664 cm

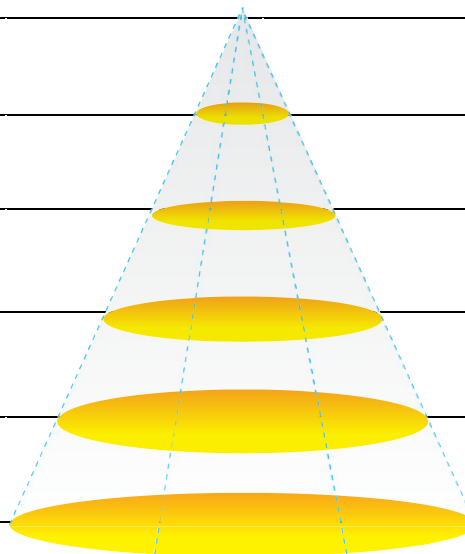


Luminous Intensity Distribution Diagram

GL-BL190-NW-120D / CCT : 4000K

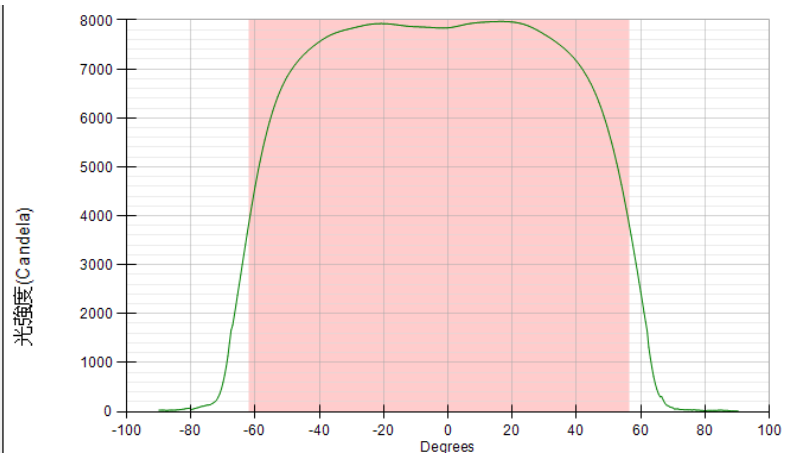
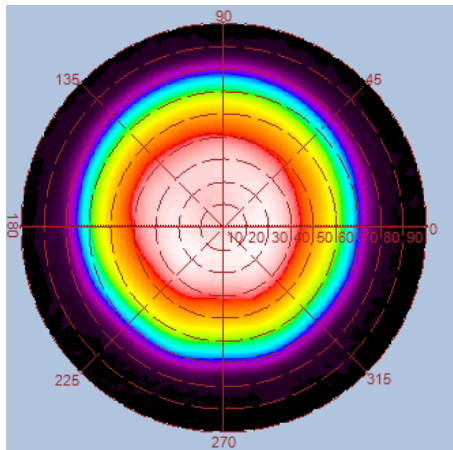
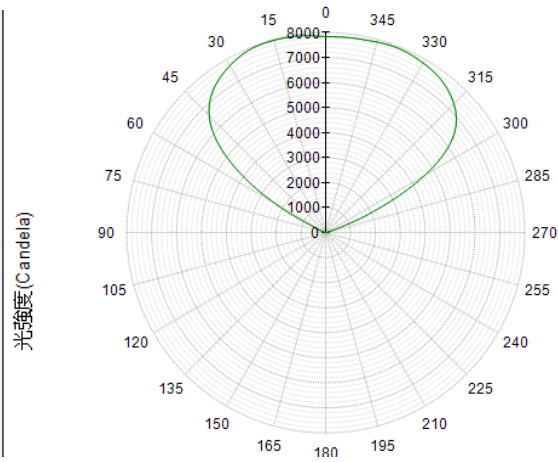
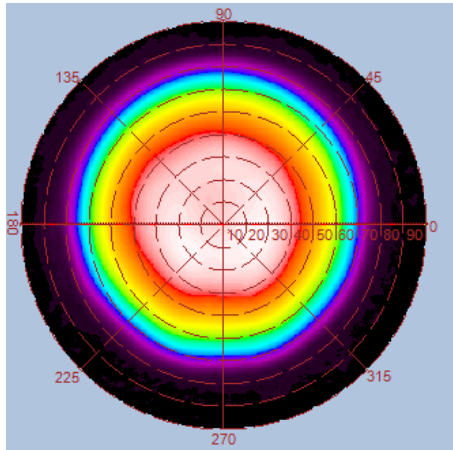


Height	E Avg.	E Max.	Diameter
1.0M	3727 Lx	7915 Lx	332 cm
2.0M	916 Lx	1918 Lx	665 cm
3.0M	405 Lx	848 Lx	998 cm
4.0M	472 Lx	226 Lx	1331 cm
5.0M	144 Lx	301 Lx	1664 cm

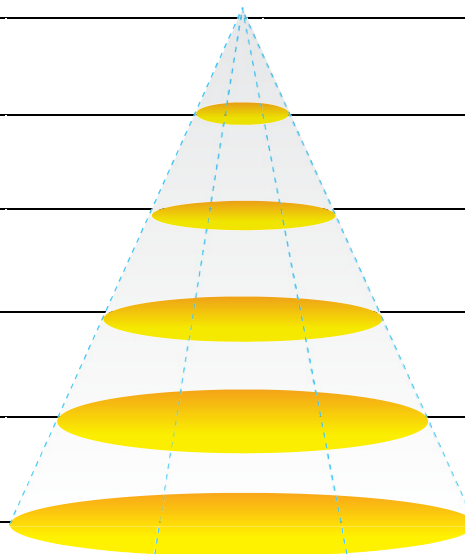


Luminous Intensity Distribution Diagram

GL-BL190-CW-120D / CCT : 5000K

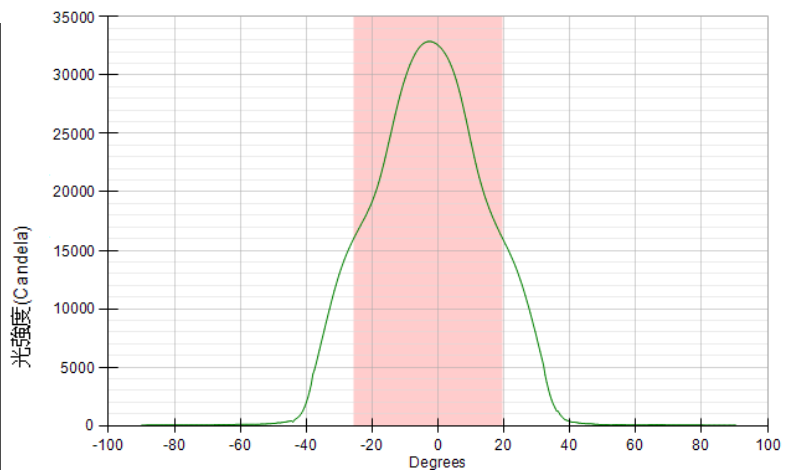
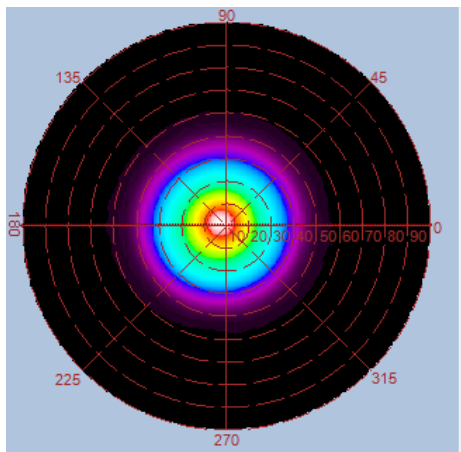
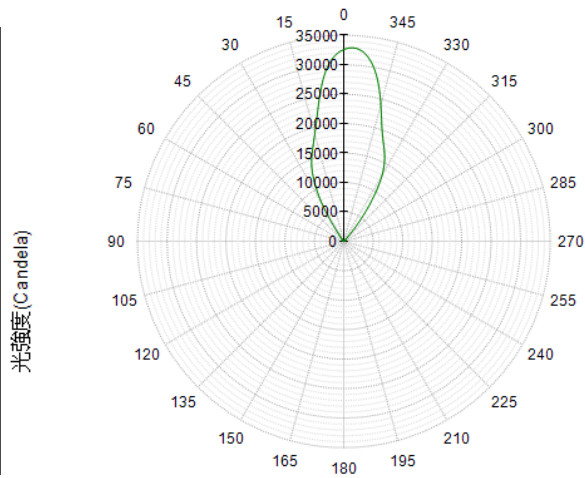
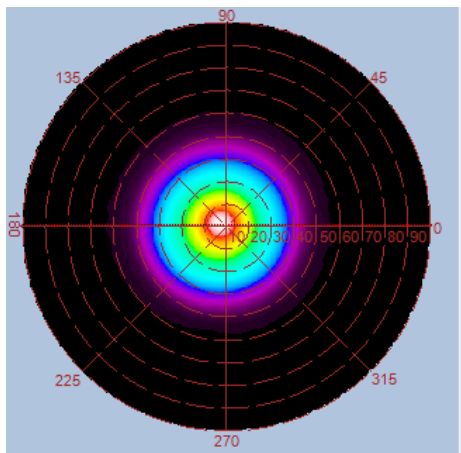


Height	E Avg.	E Max.	Diameter
1.0M	3827 Lx	8120 Lx	336 cm
2.0M	941 Lx	1968 Lx	672 cm
3.0M	416 Lx	868 Lx	10.08 cm
4.0M	233 Lx	487 Lx	1344 cm
5.0M	148 Lx	309 Lx	1680 cm

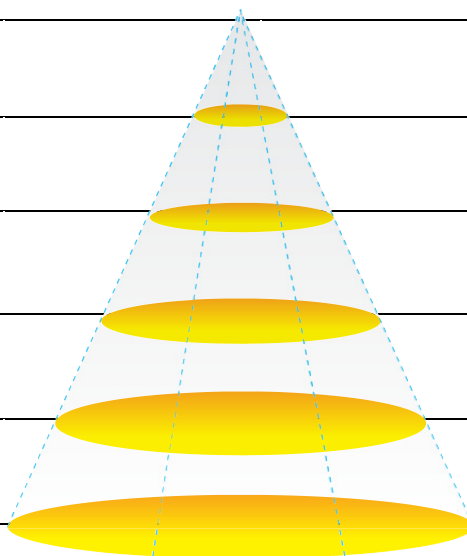


Luminous Intensity Distribution Diagram (with LUX Enhancer)

GL-BL190-WW-70D / CCT : 3000K

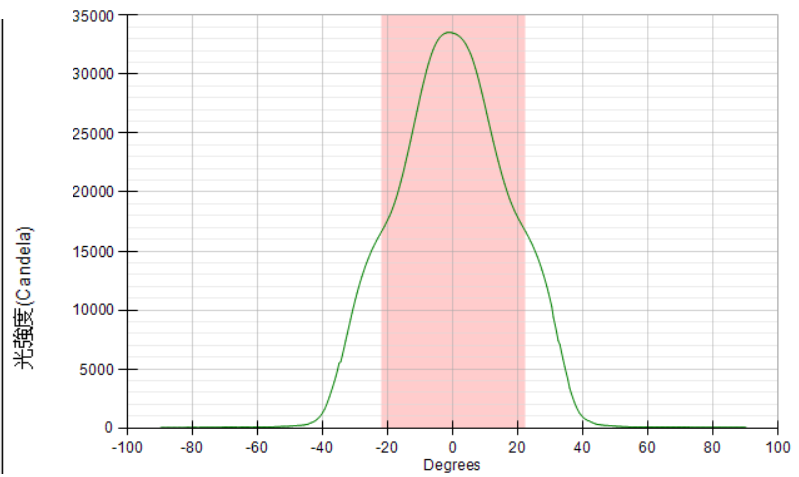
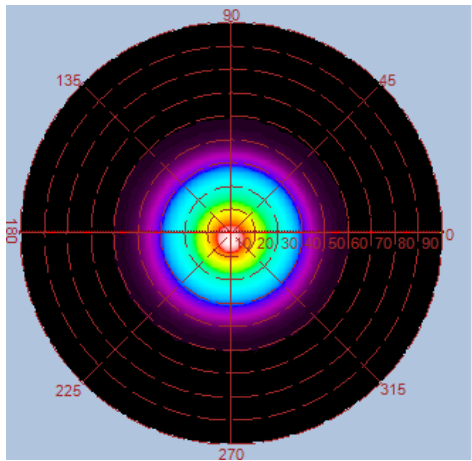
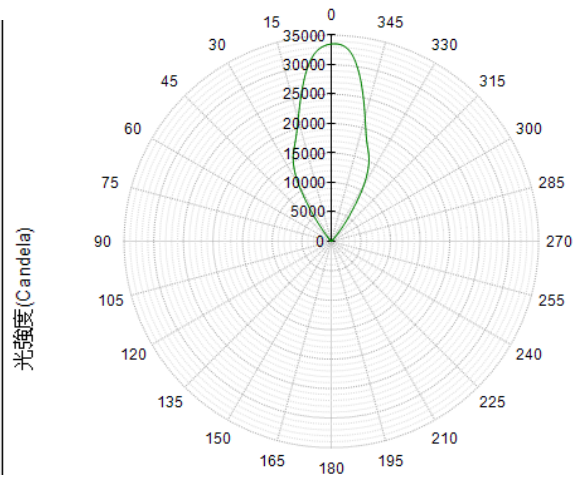
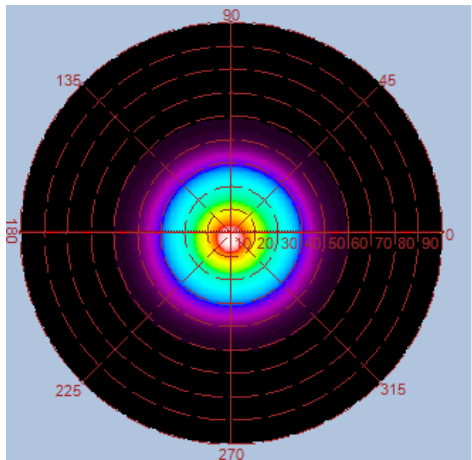


Height	E Avg.	E Max.	Diameter
1.0M	24975 Lx	36823 Lx	82 cm
2.0M	6036 Lx	8709 Lx	165 cm
3.0M	2651 Lx	3794 Lx	248 cm
4.0M	1481 Lx	2105 Lx	331 cm
5.0M	944 Lx	1349 Lx	414 cm

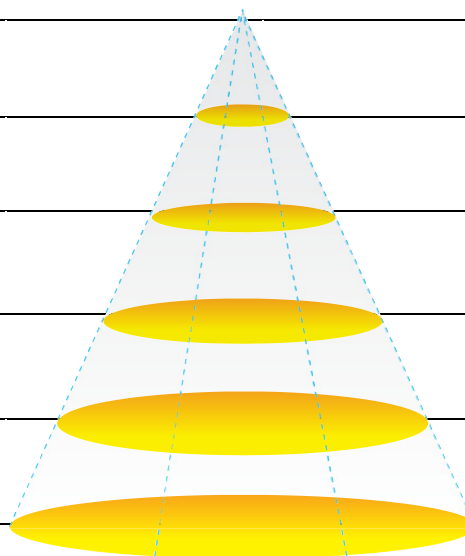


Luminous Intensity Distribution Diagram (with LUX Enhancer)

GL-BL190-NW-70D / CCT : 4000K

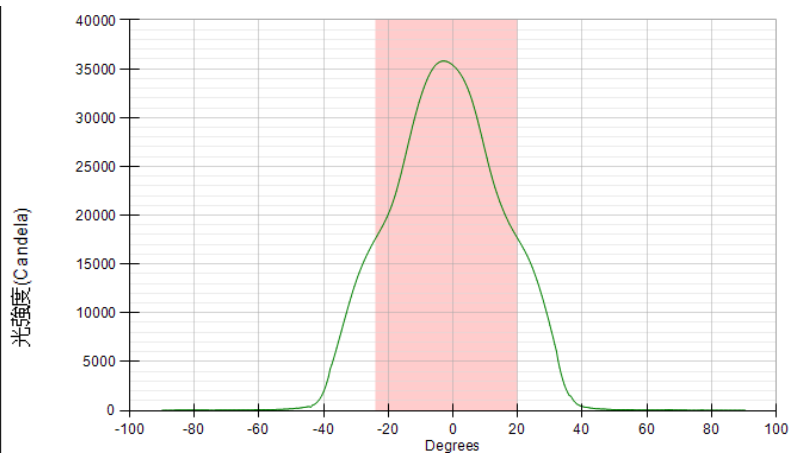
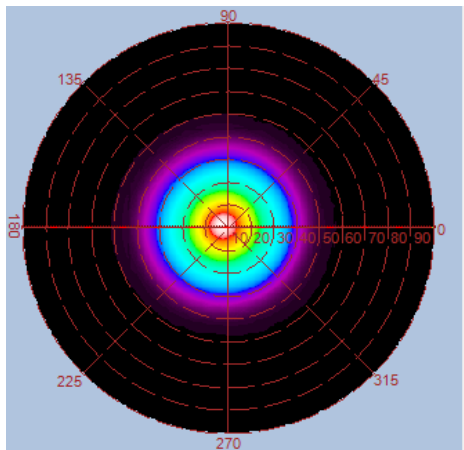
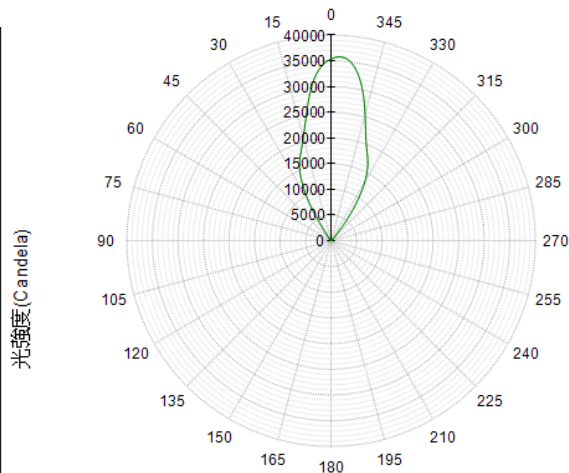
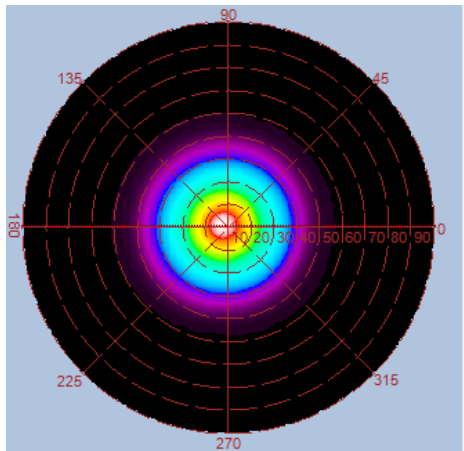


Height	E Avg.	E Max.	Diameter
1.0M	25531 Lx	40222 Lx	81 cm
2.0M	5624 Lx	8462 Lx	163 cm
3.0M	2392 Lx	3493 Lx	245 cm
4.0M	1320 Lx	1923 Lx	327 cm
5.0M	833 Lx	1205 Lx	409 cm

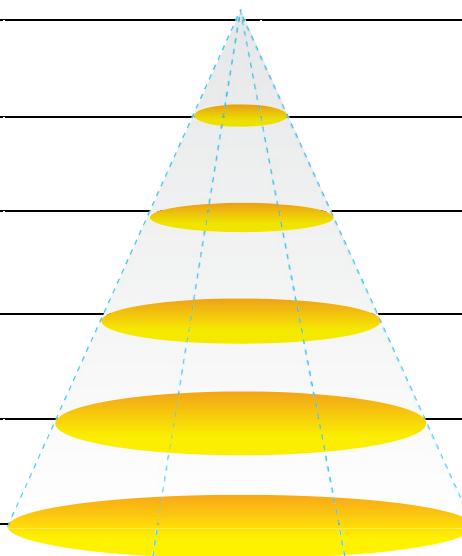


Luminous Intensity Distribution Diagram (with LUX Enhancer)

GL-BL190-CW-70D / CCT : 5000K



Height	E Avg.	E Max.	Diameter
1.0M	27475 Lx	40455 Lx	80 cm
2.0M	6640 Lx	9582 Lx	161 cm
3.0M	2911 Lx	4148 Lx	242 cm
4.0M	1627 Lx	2313 Lx	323 cm
5.0M	1034 Lx	1461 Lx	404 cm



Comparison with Lux Enhancer:

Type	GL-BL190-CW-70D (without Lux Enhancer)	GL-BL190-CW-70D (with Lux Enhancer)
Input Power	185W	185W
Luminous Flux	23000 lm	20000 lm
CCT (color)	5000K	5000K
Beam Angle	70°	45°
System Efficacy	124 lm/W	108 lm/W
Lux at 1M (E-Max)	22443	40455
Lux enhancement (%)	-	180 %
Luminous efficiency (%)	-	87 %

Photograph



