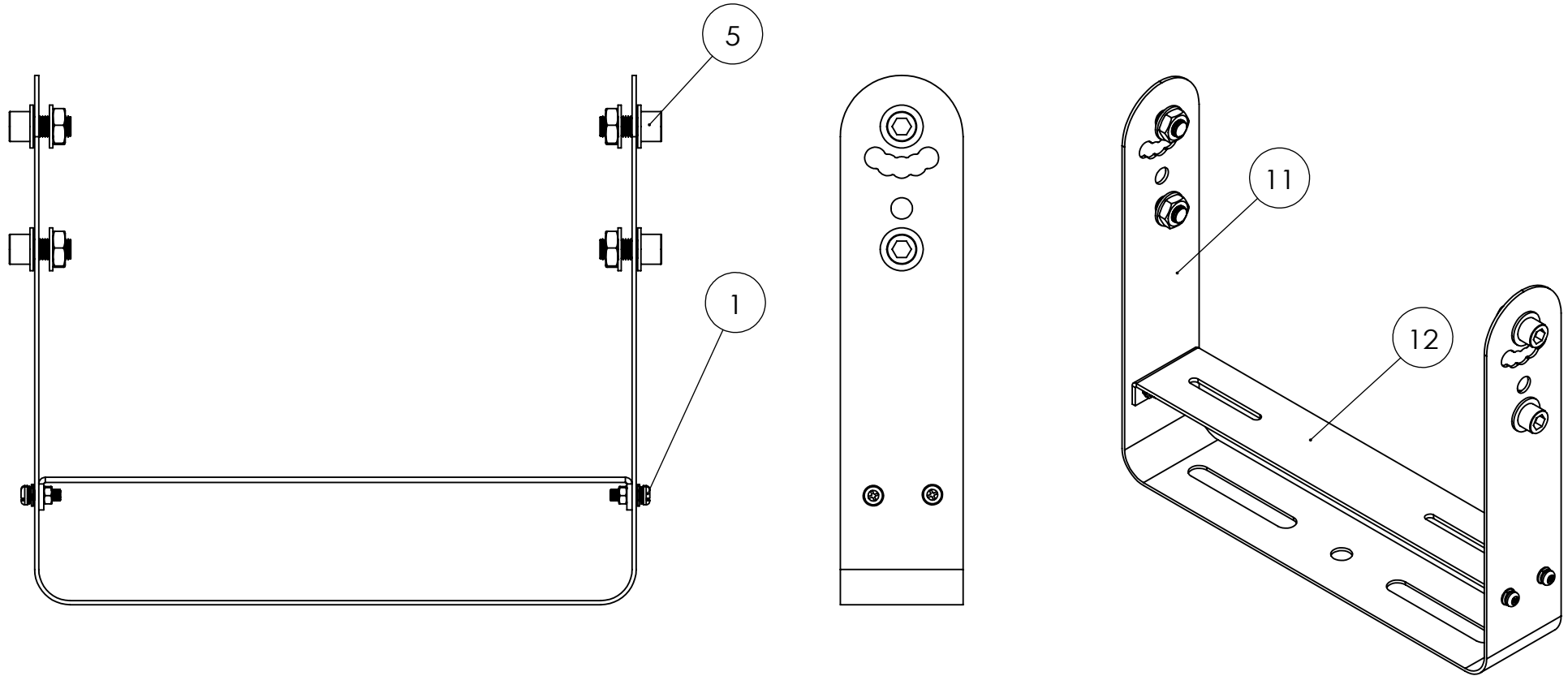



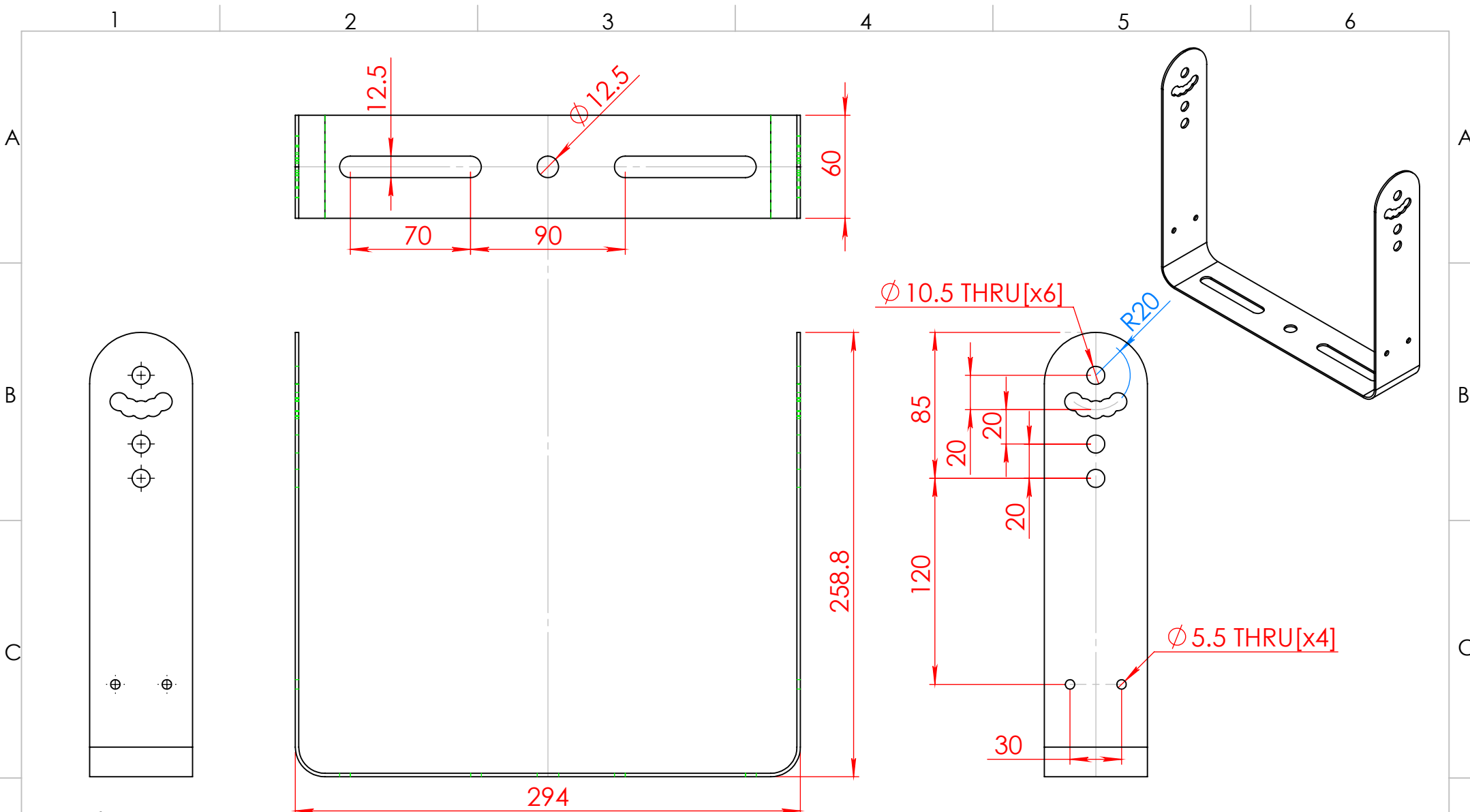
| item no. | drawing no. | description | qty |
|----------|-------------|---|-----|
| 1 | SS80P-04 A | M5-12L screw | 4 |
| 5 | SS80P-06 A | M10-20L screw | 4 |
| 11 | RH03-12 A | U type bracket for SS200-V2 single unit kit | 1 |
| 12 | RH03-13 A | driver bracket for SS200-V2 single unit kit | 1 |




Note:
Part No.:CT-SS200V20AB2001

| | | | | |
|--|-----------|---|--|------------------------------|
|  GlacialTech INC | | MET.SPEC. SUS201+ SPCC+ SUS304 | UNSPECIFIED TOL'S X.XX±0.10 XX.XX±0.20 XXX.XX±0.25 ANGULAR±1.00° | MODEL NO: SS200-V2 |
| | | UNIT mm | DRAWING NAME SS200-V2 Single Unit Kit SS200-V2一對一支架總成圖 | |
| APPROVED BY | 2018/8/24 | SCALE 1:3 | DRAWING NO. RH03a11 | REV A |
| CHECKED BY | 2018/8/24 | SIZE A4 | SHEET 1/1 | |
| DESIGN BY | 2018/8/24 | | | |
| DRAWN BY | Justin | | | |

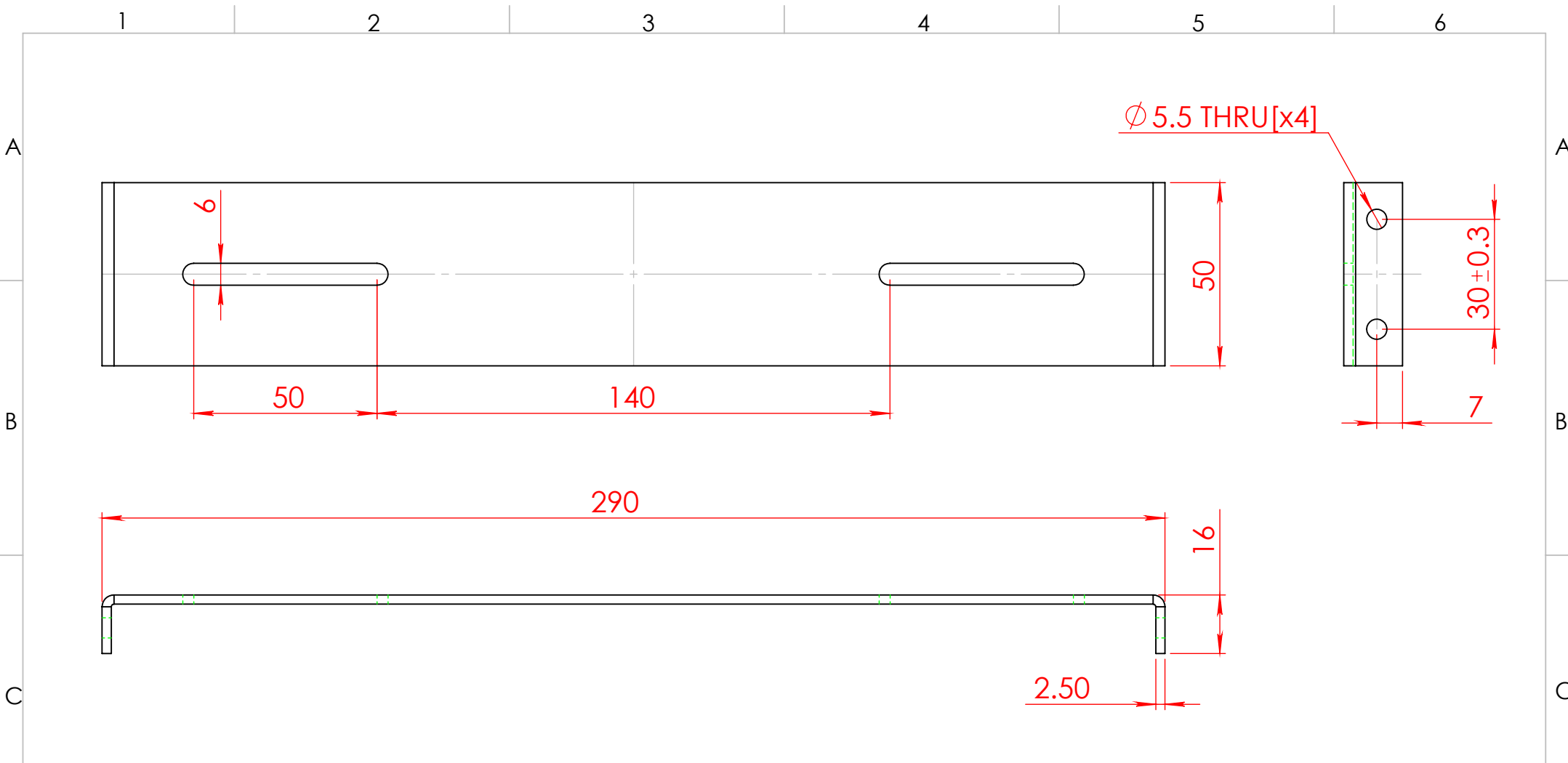
| MARK | DESCRIPTION | DATE | APPROVED |
|----------|-------------|------|----------|
| 2 | | | |
| 1 | | | |
| REVISION | | | |




Note:
1. 黑色電泳/ black electrophoresis

| | | | | | | | |
|--|--------|-----------|--------|---|---|-----|-------|
|  GlacialTech INC | | MET.SPEC. | SUS201 | UNSPECIFIED TOL'S | MODEL NO: | | |
| | | | t=2.0 | 0.5-6 ±0.50 6-30 ±1.0 30-120 ±1.5 120-315 ±2.0 | SS200-V2 | | |
| APPROVED BY | | 2018/8/24 | UNIT | mm | DRAWING NAME U Type Bracket for SS200-V2 Single Unit Kit SS200-V2 一對一U型支架 | | |
| CHECKED BY | | 2018/8/24 | SCALE | 1:3 | | | |
| DESIGN BY | | 2018/8/24 | SIZE | A4 | DRAWING NO. | REV | SHEET |
| DRAWN BY | Justin | 2018/8/24 | | | RH03-12 | A | 1/1 |

| MARK | DESCRIPTION | DATE | APPROVED |
|------|-------------|------|----------|
| 2 | | | |
| 1 | | | |
| | REVISION | | |



Note:
1. 黑色電泳處理/black electrophoresis

| | | | | | | | | | |
|--|--|------------------------|--|--|--|--|--|---|--|
|  GlacialTech INC | | | | MET.SPEC. SPCC $t=2.5\text{mm}$ | | UNSPECIFIED TOL'S 0.5~6 ± 0.50 6~30 ± 1.0 30~120 ± 1.5 120~315 ± 2.0 | | MODEL NO: SS200-V2 | |
| | | | | APPROVED BY 2018/8/24 | | UNIT mm | | DRAWING NAME Driver Bracket for SS200-V2 Single Unit Kit SS200-V2 一對一電源支架 | |
| CHECKED BY 2018/8/24 | | DESIGN BY 2018/8/24 | | SCALE 1:1.5 | | DRAWING NO. RH03-13 | | REV A | |
| DRAWN BY Justin | | 2018/8/24 | | SIZE A4 | | SHEET 1/1 | | | |

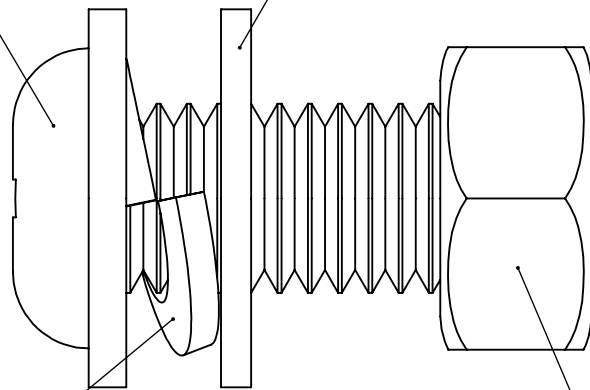
| MARK | DESCRIPTION | DATE | APPROVED |
|----------|-------------|------|----------|
| 2 | | | |
| 1 | | | |
| REVISION | | | |


M5-12L Screw

M5 Flat Washer

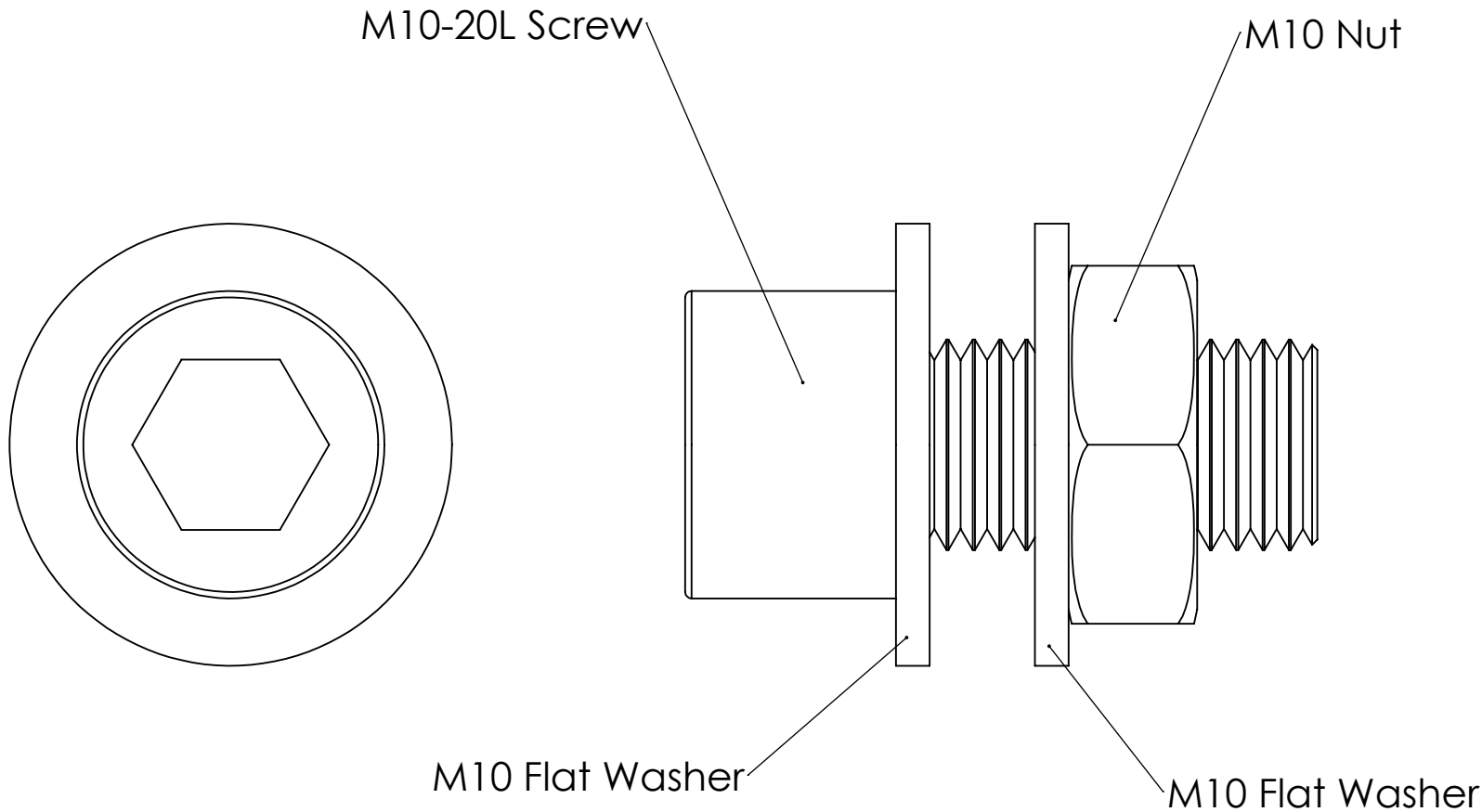
M5 Spring Washer


M5 Nut



| | | | | |
|--|---------------|-----------------------------|--|---|
|  GlacialTech INC | | MET.SPEC. SUS 304 | UNSPECIFIED TOL'S X.XX±0.10 XX.XX±0.20 XXX.XX±0.25 ANGULAR±1.00° | MODEL NO: SS80 Plus |
| APPROVED BY | | 2017/10/24 | UNIT mm | DRAWING NAME M5-12L+Spring Washer+flat Washer+Nut M5-12L螺絲組 |
| CHECKED BY | | 2017/10/24 | SCALE 5:1 | |
| DESIGN BY | | 2017/10/24 | SIZE A4 | DRAWING NO. SS80P-04 |
| DRAWN BY | Justin | 2017/10/24 | | REV A |
| | | | | SHEET 1/1 |

| MARK | DESCRIPTION | DATE | APPROVED |
|----------|-------------|------|----------|
| 2 | | | |
| 1 | | | |
| REVISION | | | |



| | | | | | | |
|--|--------|---------------------------|--|---|-----|-------|
|  GlacialTech INC | | MET.SPEC. SS304 | UNSPECIFIED TOL'S X.XX±0.10 XX.XX±0.20 XXX.XX±0.25 ANGULAR±1.00° | MODEL NO: SS80 Plus | | |
| APPROVED BY | | 2017/10/24 | UNIT mm | DRAWING NAME M10-20L+Flat Washer(x2)+Nut M10-20L螺絲組 | | |
| CHECKED BY | | 2017/10/24 | SCALE 3:1 | | | |
| DESIGN BY | | 2017/10/24 | SIZE A4 | DRAWING NO. | REV | SHEET |
| DRAWN BY | Justin | 2017/10/24 | | SS80P-06 | A | 1/1 |

| MARK | DESCRIPTION | DATE | APPROVED |
|----------|-------------|------|----------|
| 2 | | | |
| 1 | | | |
| REVISION | | | |