

IP Rating : IP66



# LED Natural Sunlight GL-BL60-NL

## Features

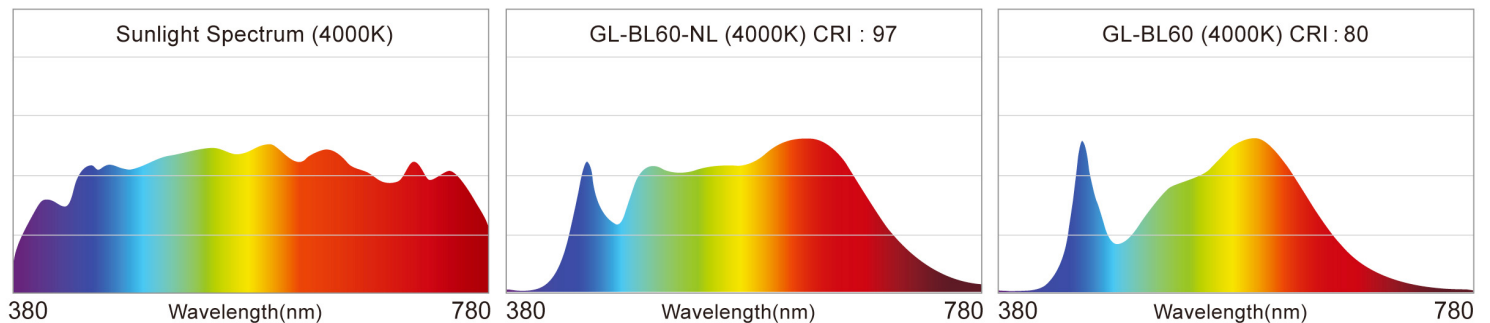
- High CRI is 97.
- High CQS is 97.
- TM-30-15 Rf is up to 96.
- TM-30-15 Rg is up to 102.
- IP66 rated.
- The bracket can adjusted 360 degrees horizontally or 180 degrees vertically.
- Available surface mounted, suspension chain, pendant rod and outdoor stake.
- Dimming function optional.



## Specifications

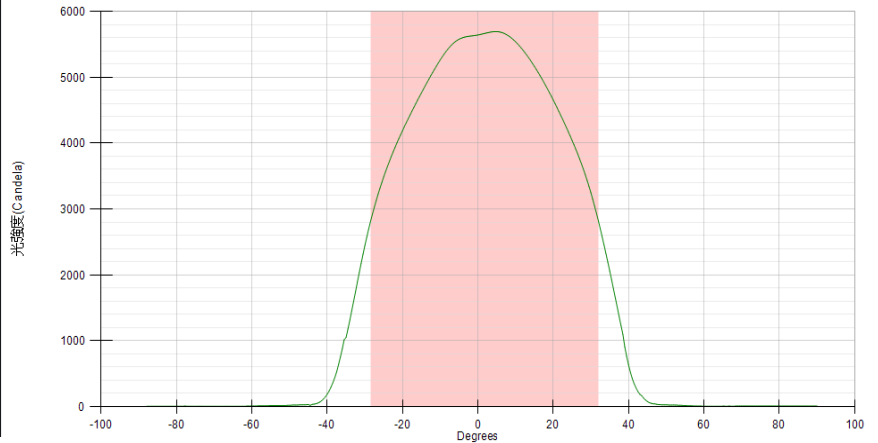
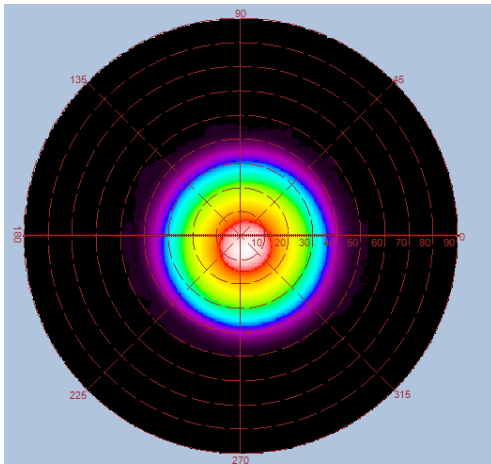
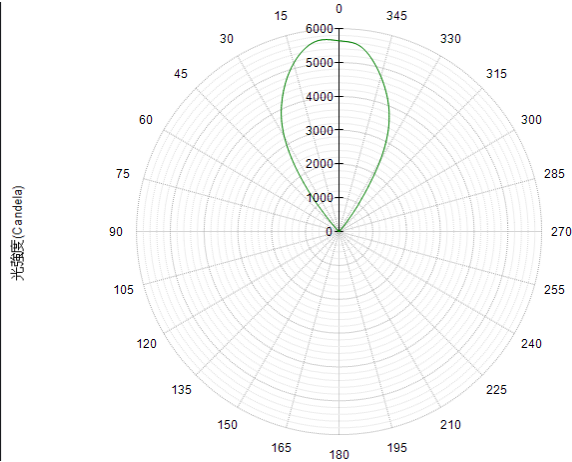
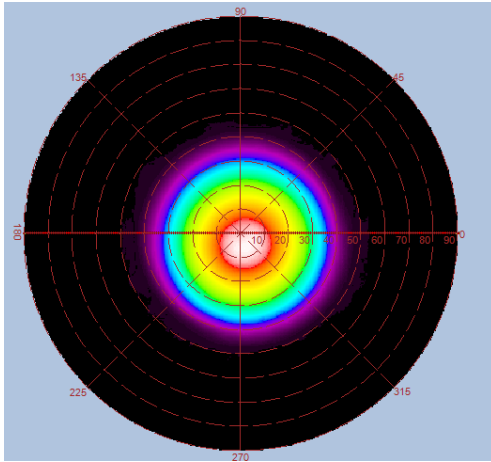
Model No.	GL-BL60-NL-WW	GL- BL60-NL-NW	GL- BL60-NL-CW
Energy Used	55W		
Rated Life	30,000 Hours		
Input Voltage	100-240V AC (Driver with CUL Certificate Support 277V AC for North America only)		
Power Factor (PF)	0.98 at 120V AC, 0.94 at 240V AC		
CCT (color)	3000K	4000K	5000K
Luminous Flux	4700 lm	4950 lm	5150 lm
System Efficacy	85 lm/W	90 lm/W	94 lm/W
CRI (Typ.)	97		
CQS (Typ.)	96	97	97
TM-30-15 Rf (Typ.)	95	96	96
TM-30-15 Rg (Typ.)	102	102	103
Beam Angle	60° / 120° with lampshade		
Dimension	Adjustable height Ø197 x 192mm ~ Ø197 x 252mm		
IP Rating	IP66		
Operation Temperature	-40°C ~ +50°C		
Net Weight	2.1 kg (with driver & lampshade)		
Package	4 Boxes / Carton		

## Spectrum

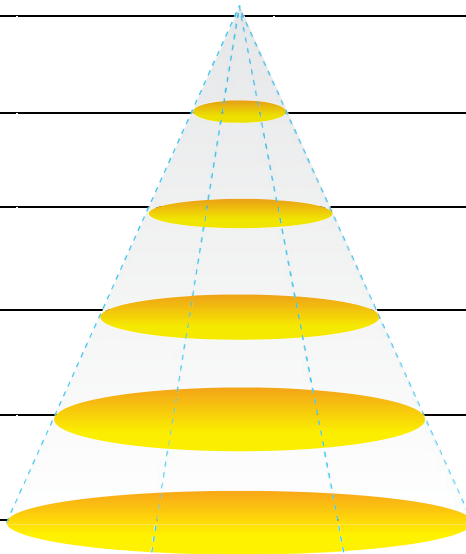


## Luminous Intensity Distribution Diagram

GL-BL60-NL-WW-60D / CCT : 3000K



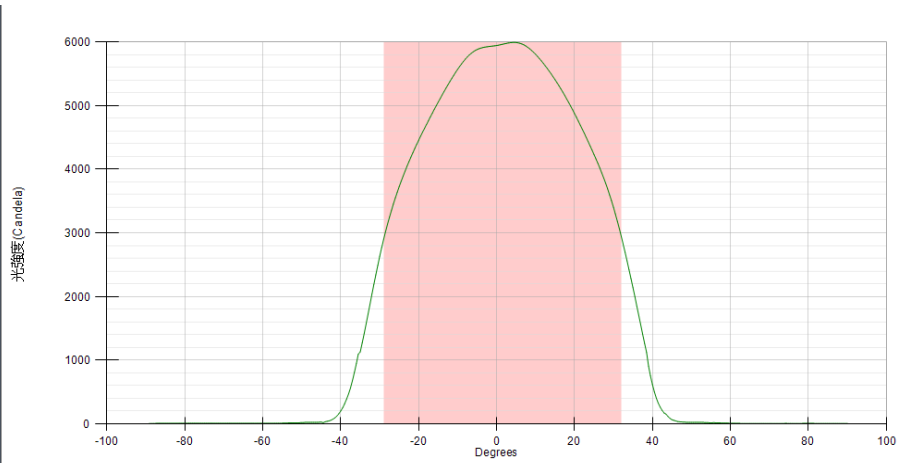
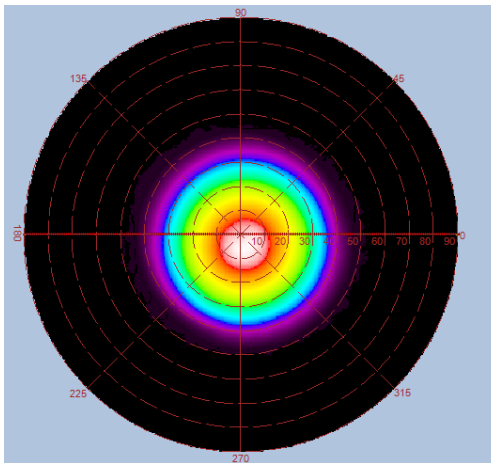
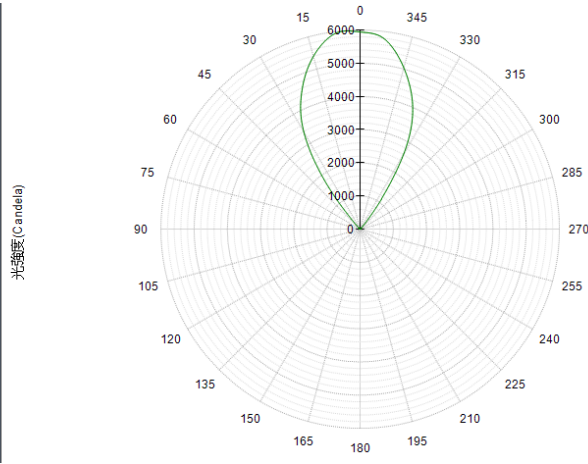
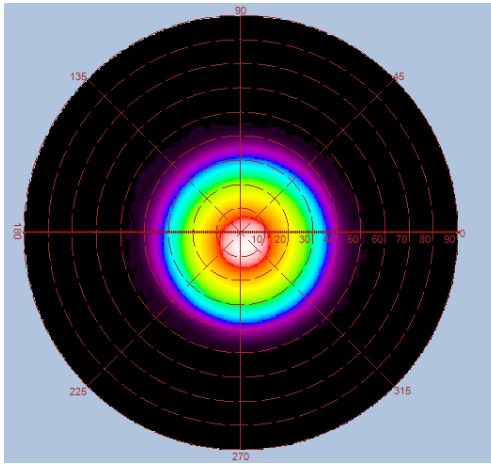
Height	E Avg.	E Max.	Diameter
1.0M	5450 Lx	8621 Lx	115 cm
2.0M	1222 Lx	1792 Lx	231 cm
3.0M	525 Lx	745 Lx	346 cm
4.0M	290 Lx	410 Lx	462 cm
5.0M	184 Lx	257 Lx	577 cm



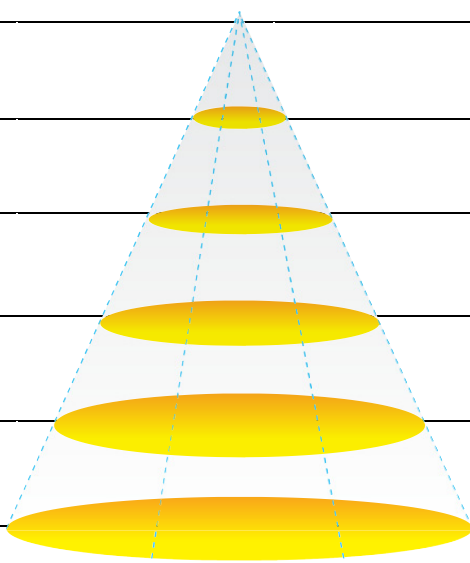


## Luminous Intensity Distribution Diagram

GL-BL60-NL-NW-60D / CCT : 4000K

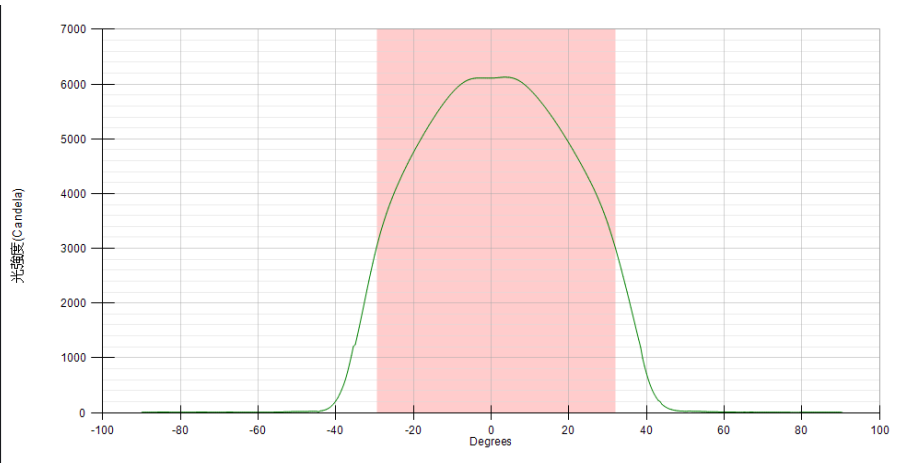
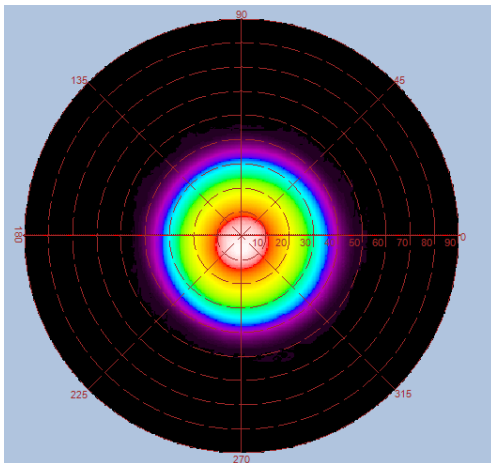
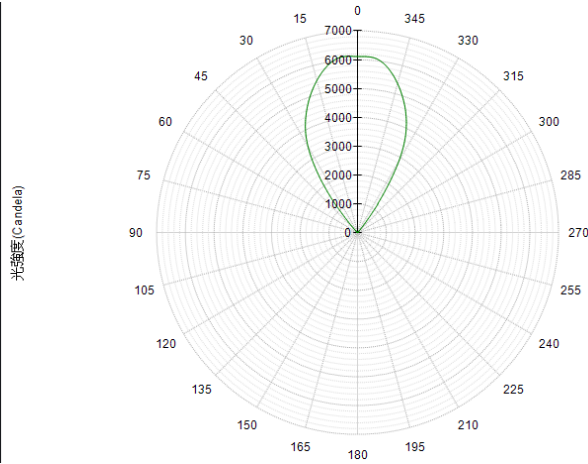
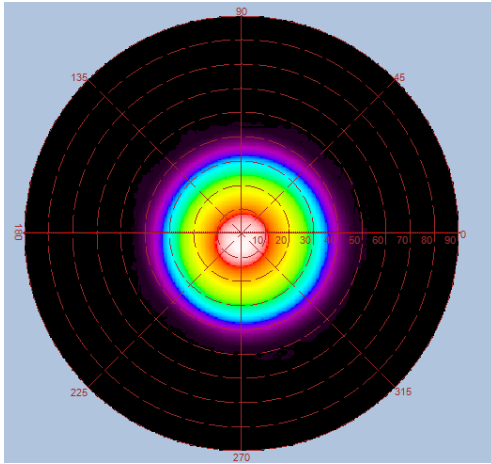


Height	E Avg.	E Max.	Diameter
1.0M	5693 Lx	9019 Lx	115 cm
2.0M	1279 Lx	1881 Lx	231 cm
3.0M	550 Lx	784 Lx	346 cm
4.0M	304 Lx	430 Lx	462 cm
5.0M	193 Lx	270 Lx	577 cm

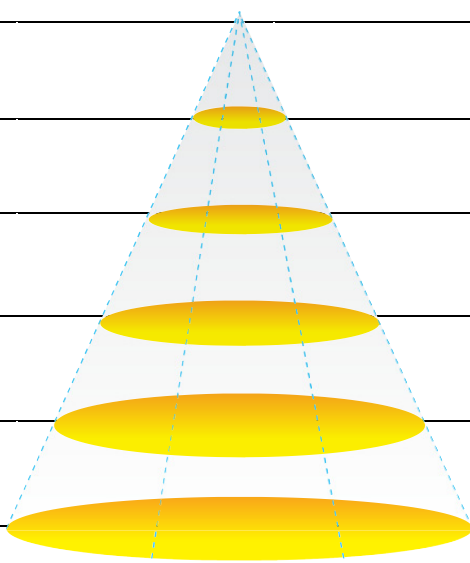


## Luminous Intensity Distribution Diagram

GL-BL60-NL-CW-60D / CCT : 5000K

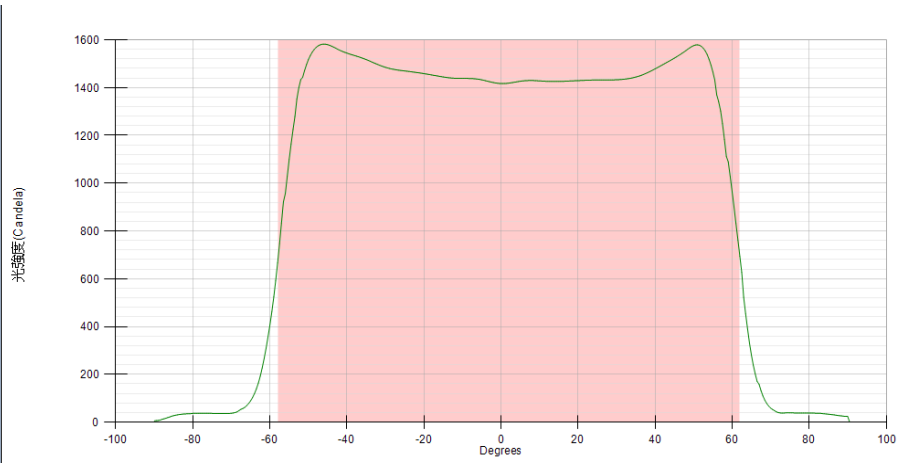
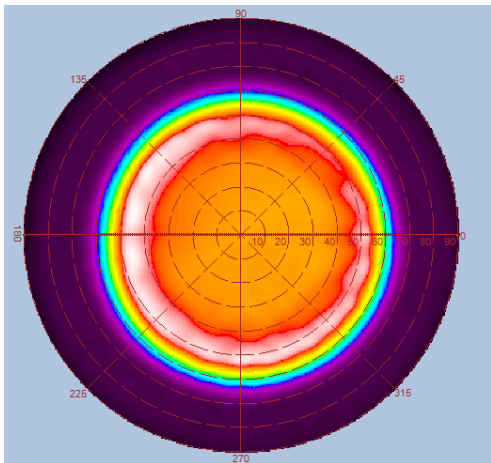
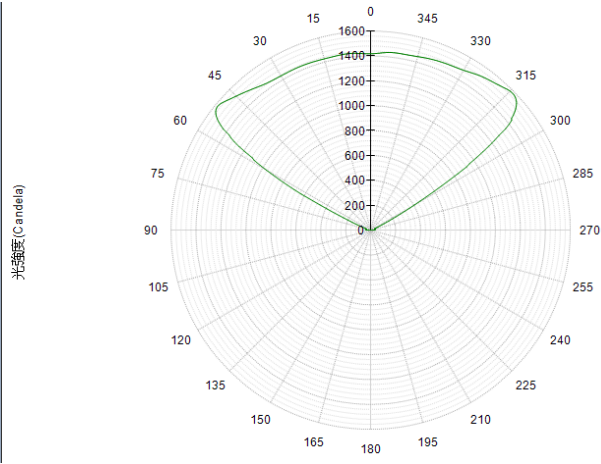
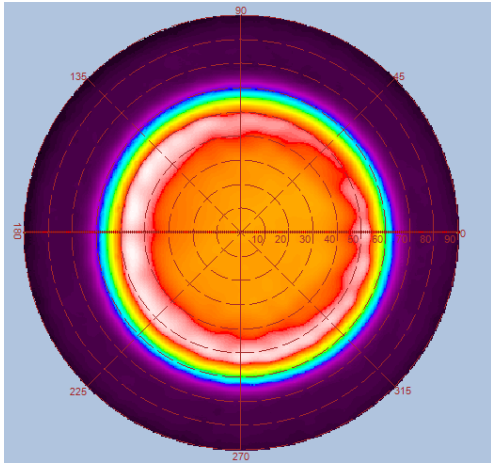


Height	E Avg.	E Max.	Diameter
1.0M	5942 Lx	9206 Lx	115 cm
2.0M	1337 Lx	1941 Lx	231 cm
3.0M	573 Lx	812 Lx	346 cm
4.0M	317 Lx	442 Lx	462 cm
5.0M	201 Lx	278 Lx	577 cm

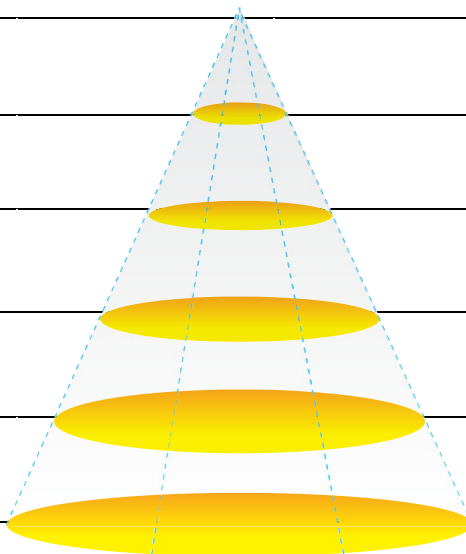


## Luminous Intensity Distribution Diagram

GL-BL60-NL-WW-120D / CCT : 3000K

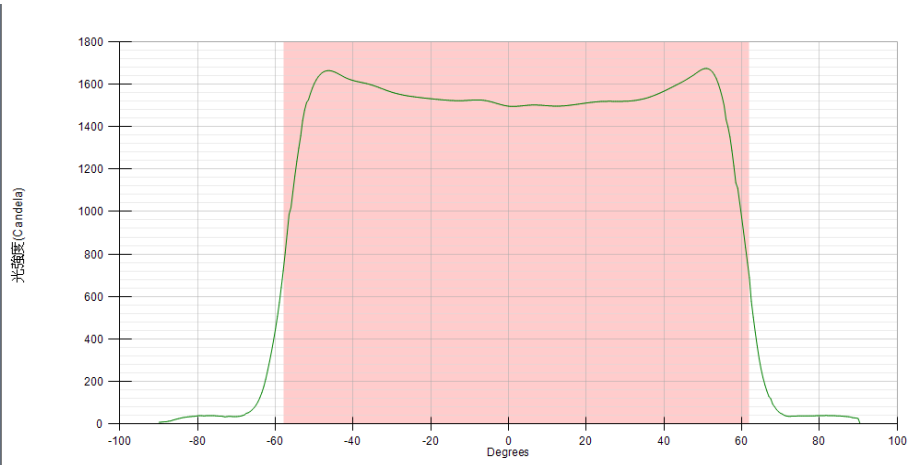
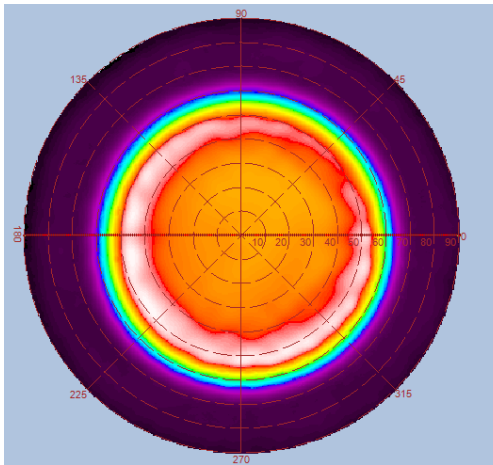
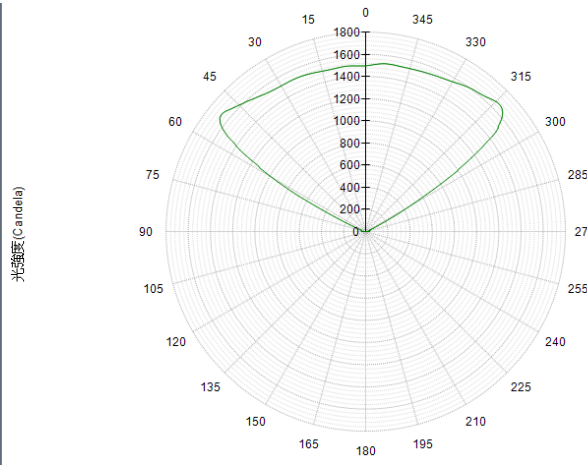
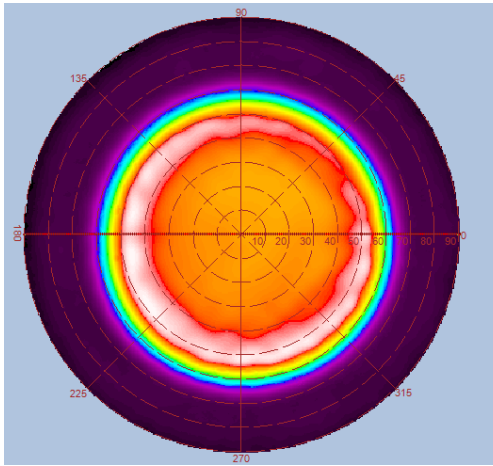


Height	E Avg.	E Max.	Diameter
1.0M	886 Lx	2062 Lx	346 cm
2.0M	203 Lx	432 Lx	693 cm
3.0M	88 Lx	182 Lx	1039 cm
4.0M	49 Lx	99 Lx	1386 cm
5.0M	31 Lx	63 Lx	1732 cm

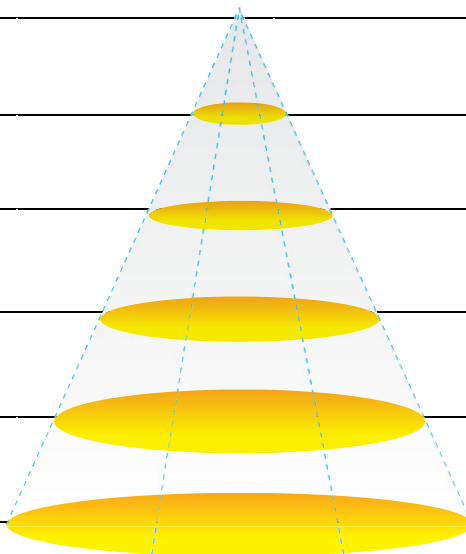


## Luminous Intensity Distribution Diagram

GL-BL60-NL-NW-120D / CCT : 4000K

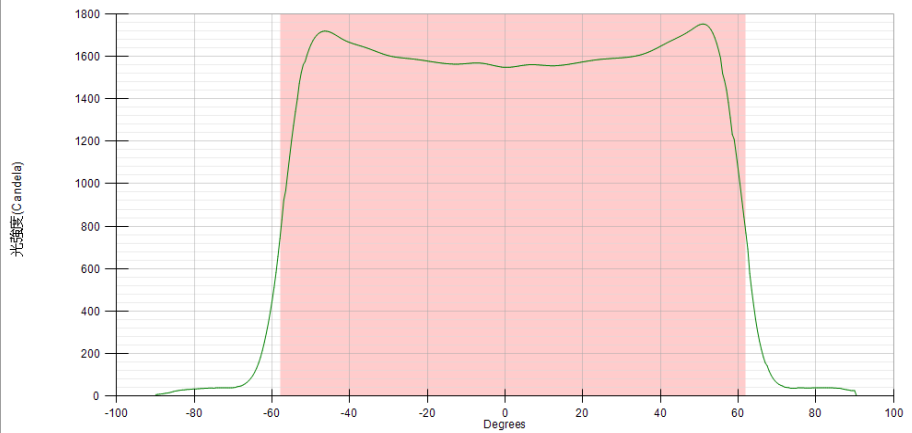
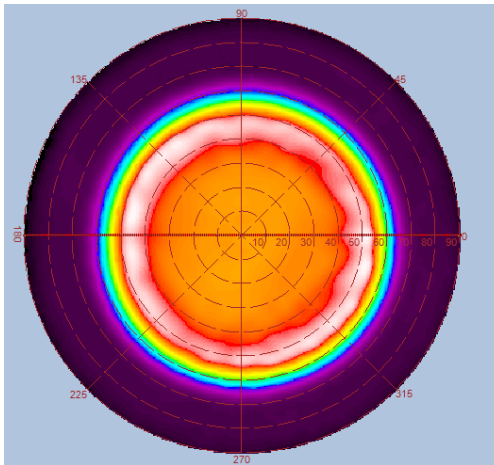
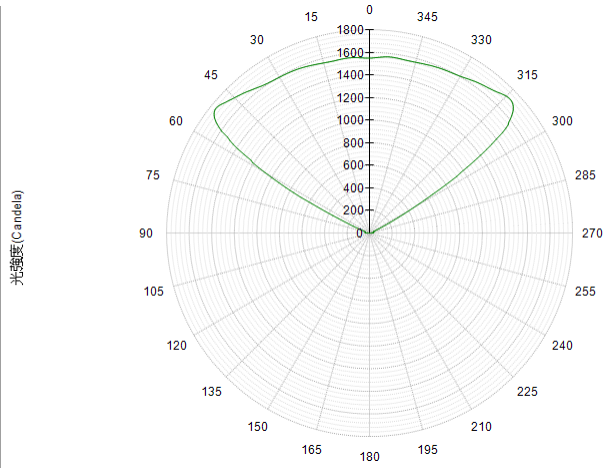
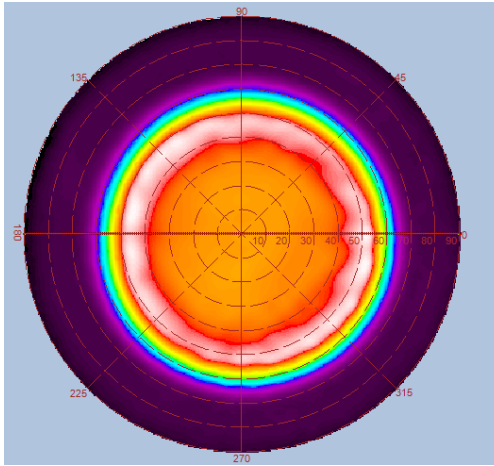


Height	E Avg.	E Max.	Diameter
1.0M	939 Lx	2163 Lx	346 cm
2.0M	216 Lx	462 Lx	693 cm
3.0M	93 Lx	193 Lx	1039 cm
4.0M	52 Lx	106 Lx	1386 cm
5.0M	33 Lx	67 Lx	1732 cm

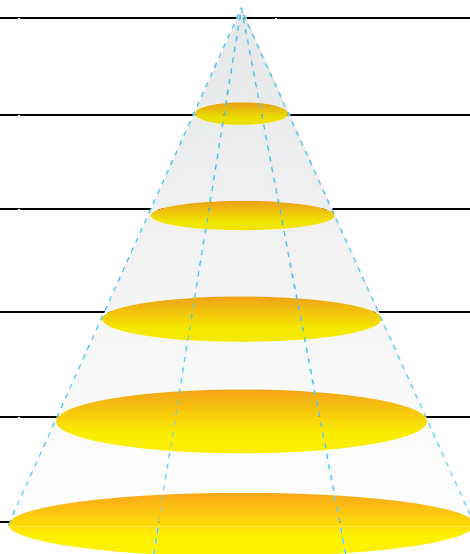


## Luminous Intensity Distribution Diagram

GL-BL60-NL-CW-120D / CCT : 5000K

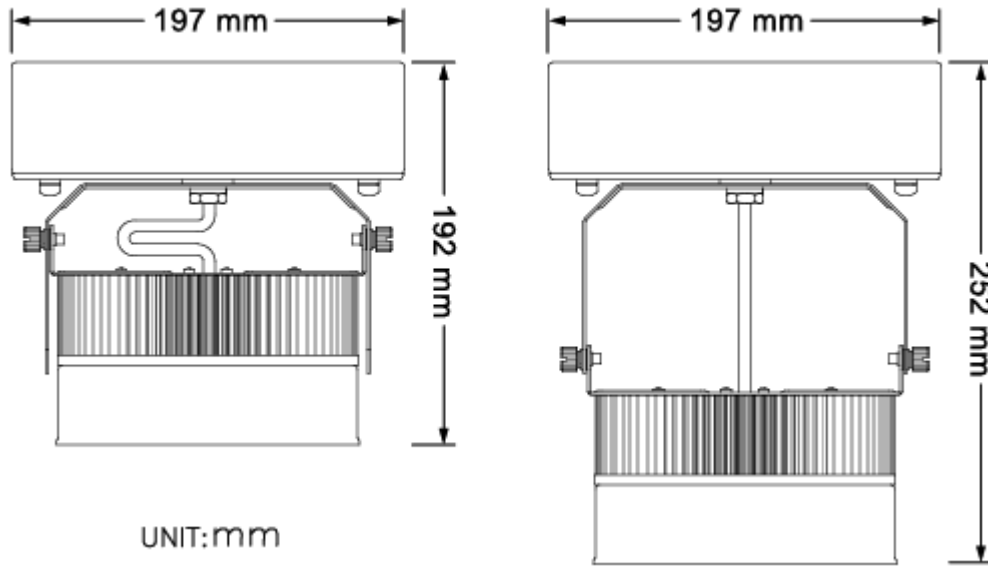


Height	E Avg.	E Max.	Diameter
1.0M	971 Lx	2239 Lx	346 cm
2.0M	223 Lx	474 Lx	693 cm
3.0M	96 Lx	200 Lx	1039 cm
4.0M	53 Lx	109 Lx	1386 cm
5.0M	34 Lx	69 Lx	1732 cm

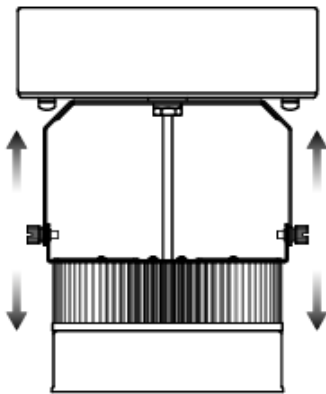




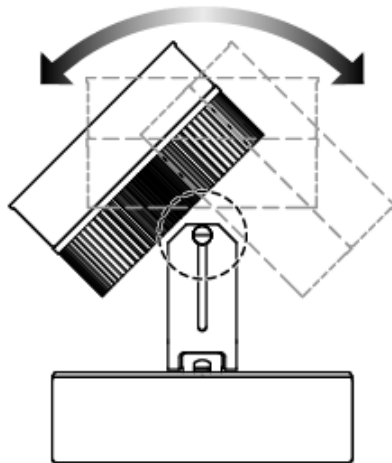
### Outline / Dimension



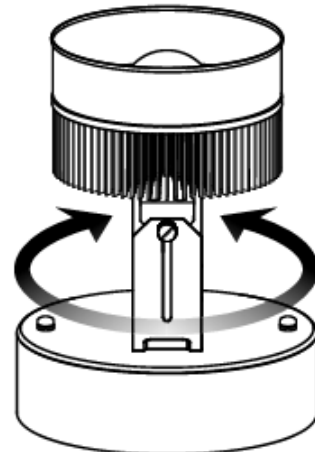
Adjust to desired height.



180 degrees adjustment



360 degrees rotation



GlacialPower LED Driver Inside  
GP-HS60P-42C

Accessory



Suspension Chain / Pendant Rod / Outdoor Stake



Suspension Chain / Pendant Rod / Outdoor Stake for optional.



## Application



## Application

