



## Features

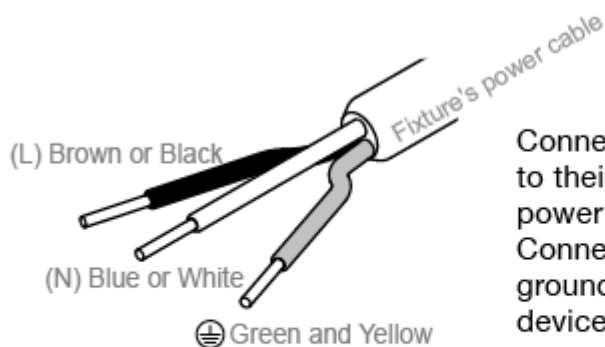
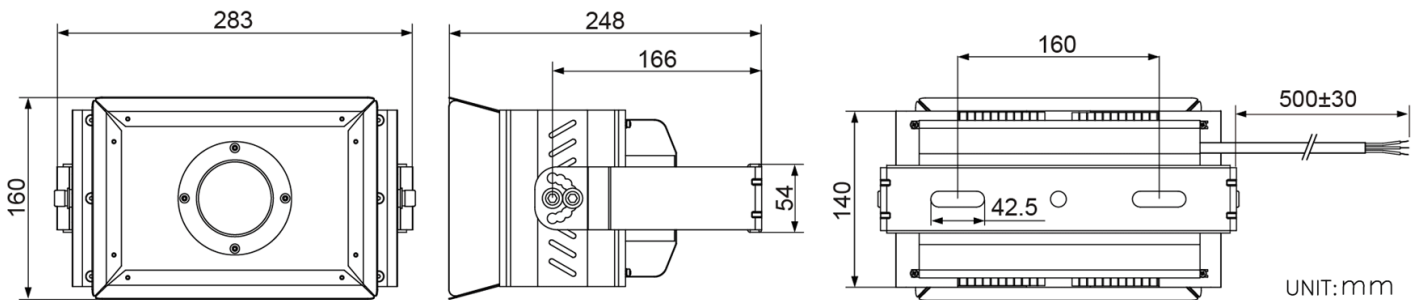
- Highly efficient Metal-Halide replacement at 111 lm/W.
- Stainless Steel Outdoor-ready Mount features 360 degrees of vertical adjustment.
- 10,000 lumen output for powerful outdoor lighting.
- CCT: 3000K, 4000K and 5000K available. 70 and 120 degree beam angle.
- IP66 rated rugged for outdoor use with waterproof power connector.
- Wide operating temperature range from -40°C to +50°C.



## Specifications

Type	GL-FL100-WW	GL-FL100-NW	GL-FL100-CW
Energy Used	96W		
Rated Life	30,000 Hours		
Input Voltage	100-240V AC Driver with CUL Certificate Support 277V AC for North America only		
Power Factor (PF)	0.98 at 120V AC, 0.97 at 240V AC		
CCT (color)	3000K	4000K	5000K
Luminous Flux	10000 lm	10500 lm	10700 lm
System Efficacy	104 lm/W	109 lm/W	111 lm/W
CRI (Minimum)	80	80	80
Beam Angle	70° / 120°		
Dimension	283 x 160 x 248 mm		
IP Rating	IP66		
Operation Temperature	-40°C ~ +50°C *(Note 1)		
Net Weight	4 kg		
Package	1 Carton		
*Note 1 : -40°C (Only Support for 200~240V AC Input Voltage)			

## Outline / Dimension



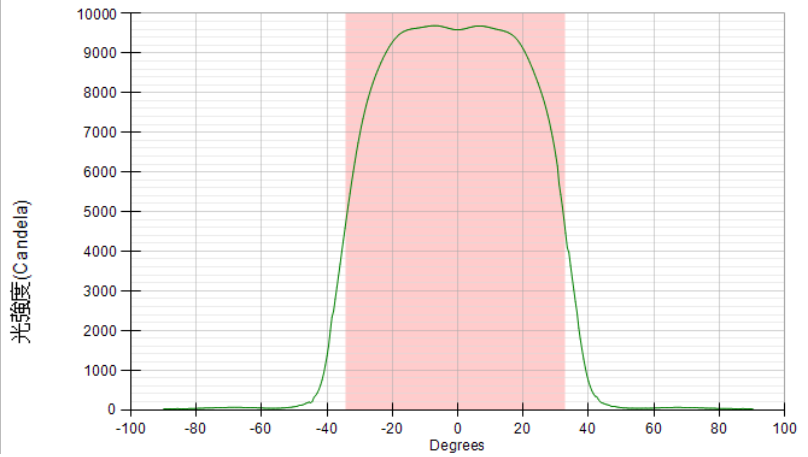
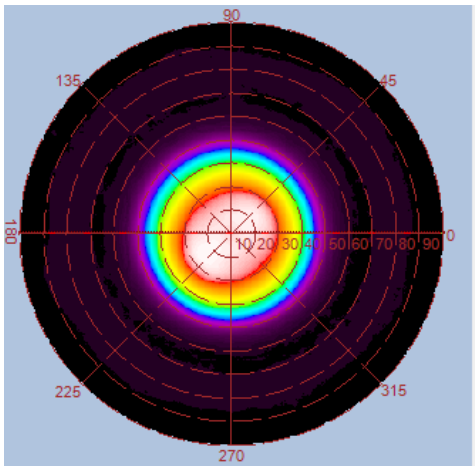
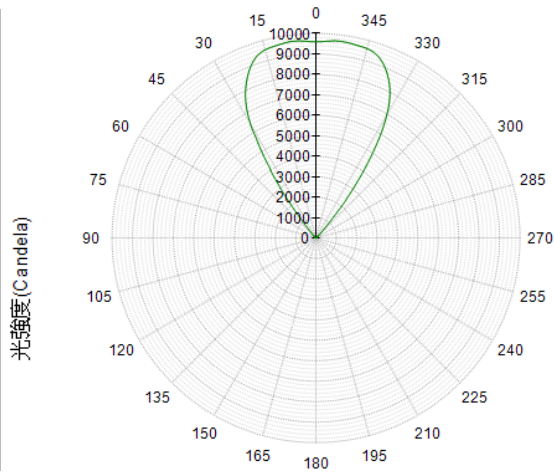
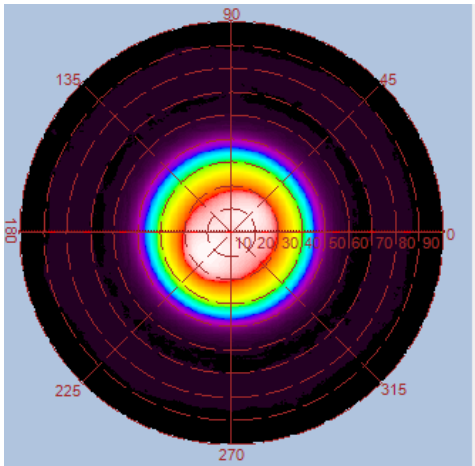
Connect the fixture's power cables to their corresponding colors of the power source and entwine together. Connect the grounding line to the grounding screw of the grounding devices.



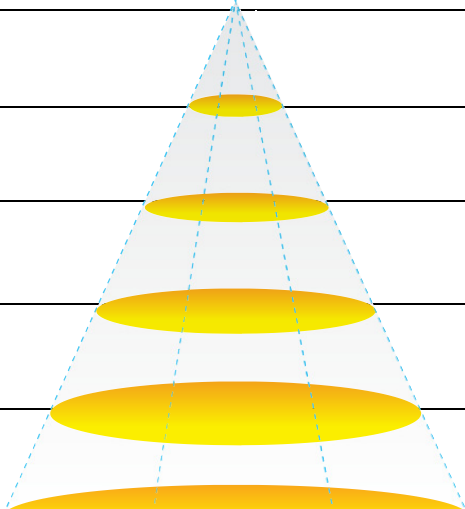
Grounding line should be fixed perpetually and not allow to disconnect.

## Luminous Intensity Distribution Diagram

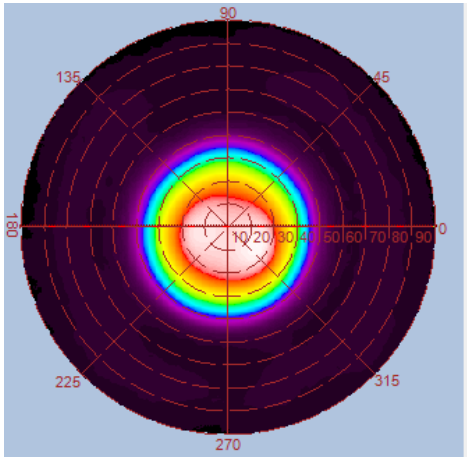
GL-FL100-WW-70D / CCT : 3000K



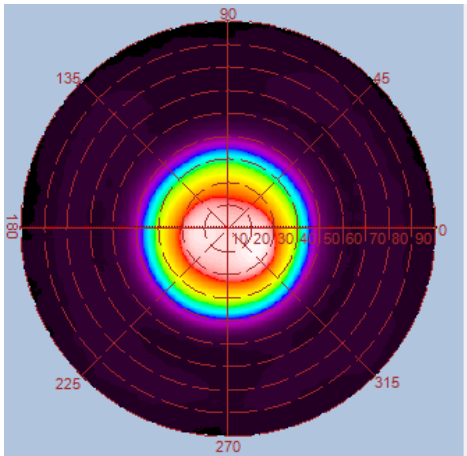
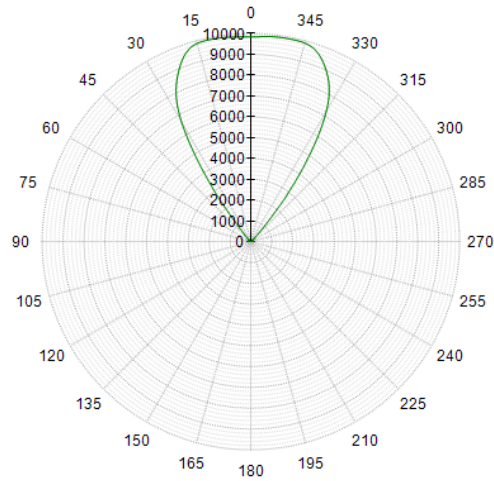
Height	E Avg.	E Max.	Diameter
1.0M	6972 Lx	10605 Lx	133 cm
2.0M	1578 Lx	2223 Lx	267 cm
3.0M	680 Lx	936 Lx	400 cm
4.0M	513 Lx	378 Lx	534 cm
5.0M	239 Lx	321 Lx	668 cm



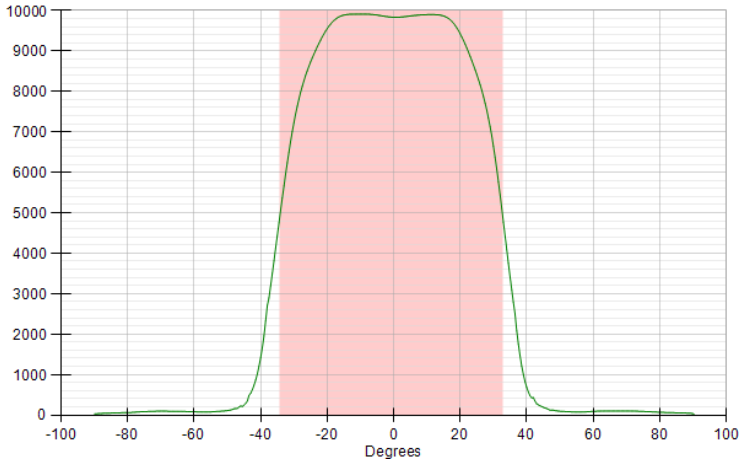
**GL-FL100-NW-70D / CCT : 4000K**



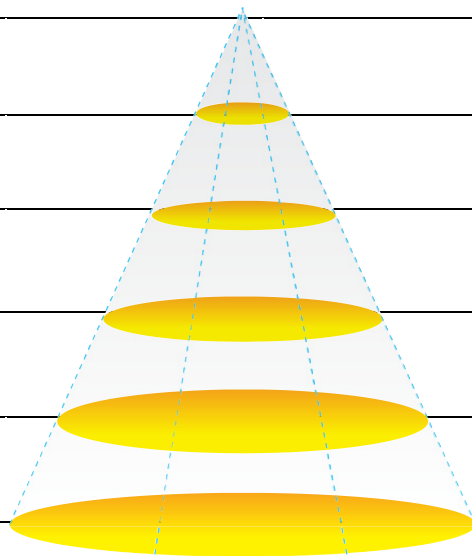
光強度(Candela)



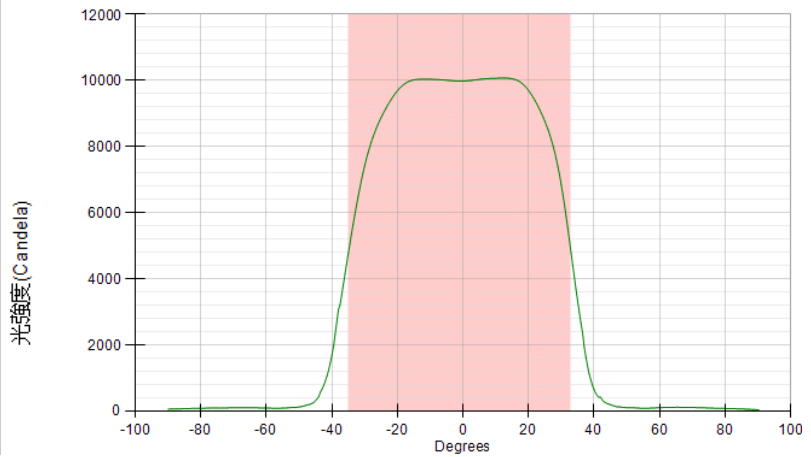
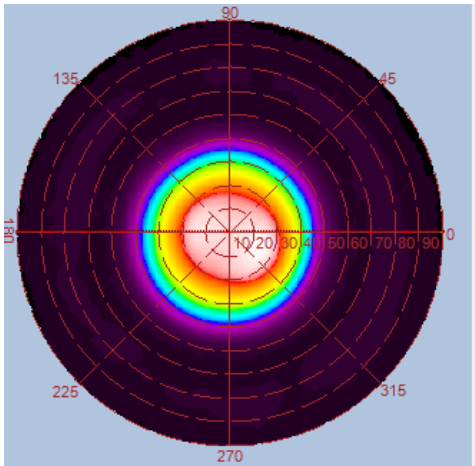
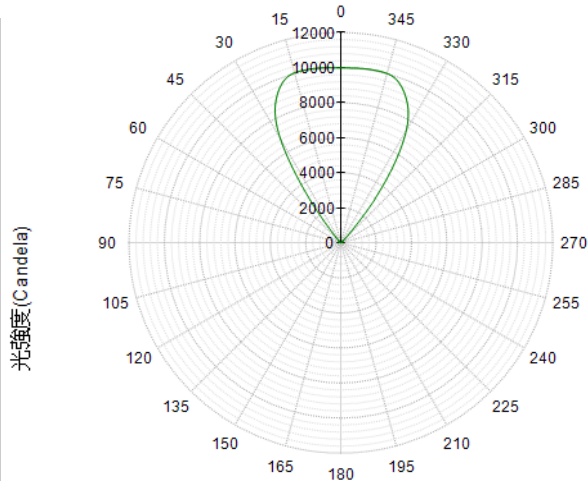
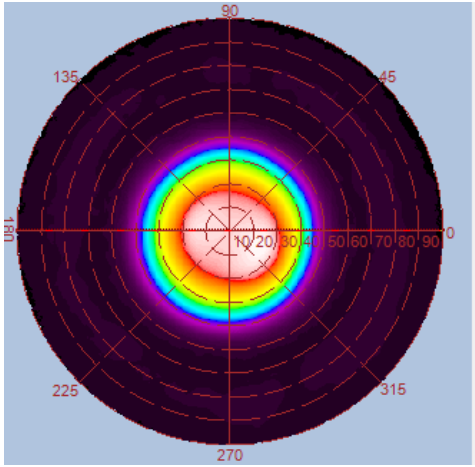
光強度(Candela)



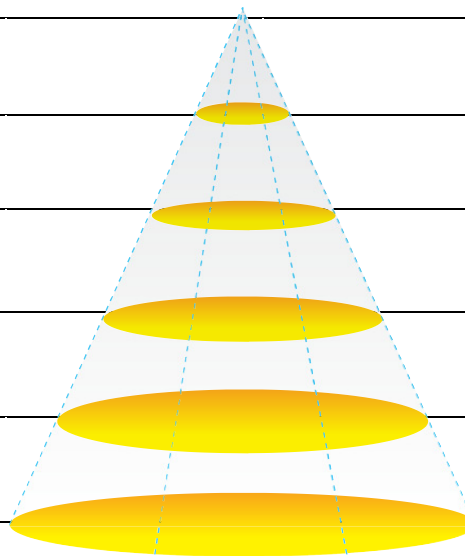
Height	E Avg.	E Max.	Diameter
1.0M	7806 Lx	10648 Lx	133 cm
2.0M	1909 Lx	2542 Lx	267 cm
3.0M	841 Lx	1112 Lx	400 cm
4.0M	471 Lx	621 Lx	534 cm
5.0M	301 Lx	395 Lx	668 cm



**GL-FL100-CW-70D / CCT : 5000K**

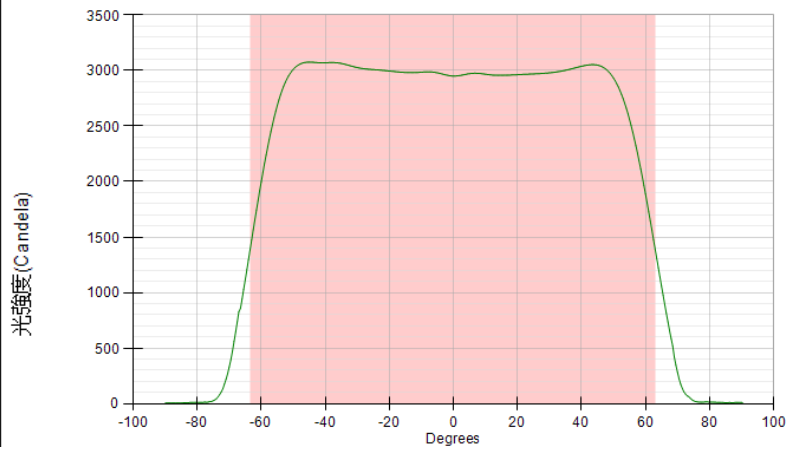
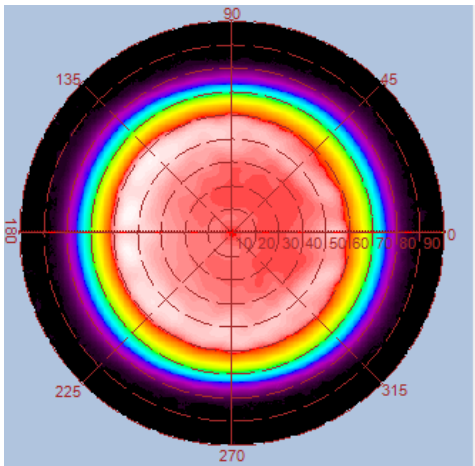
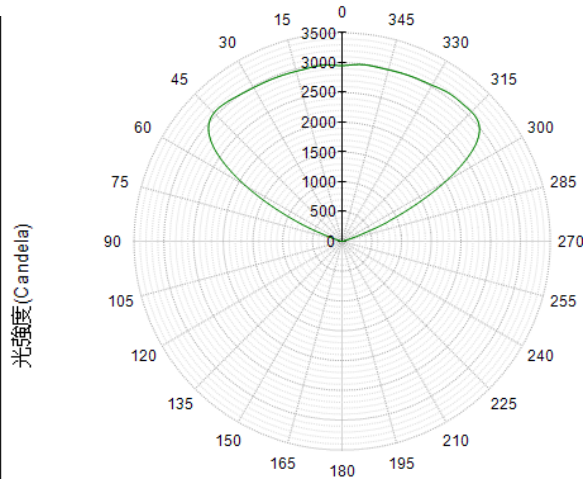
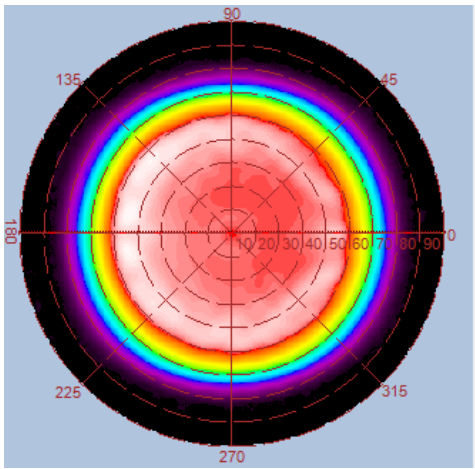


Height	E Avg.	E Max.	Diameter
1.0M	7912 Lx	10807 Lx	134 cm
2.0M	1928 Lx	2568 Lx	269 cm
3.0M	852 Lx	1131 Lx	404 cm
4.0M	478 Lx	629 Lx	539 cm
5.0M	304 Lx	400 Lx	674 cm

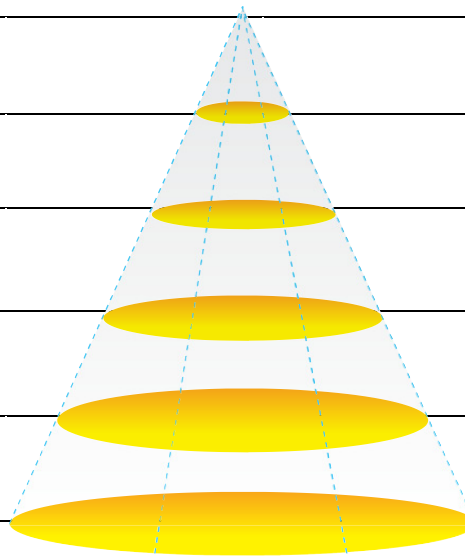


## Luminous Intensity Distribution Diagram

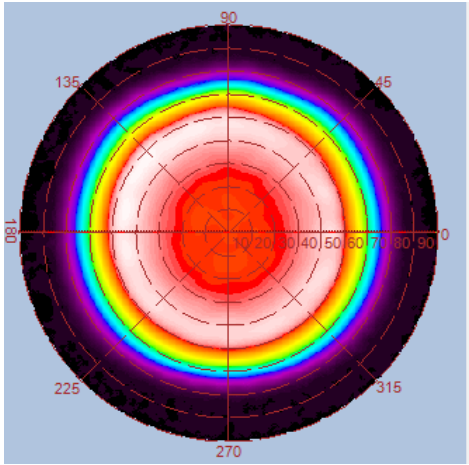
GL-FL100-WW-120D / CCT : 3000K



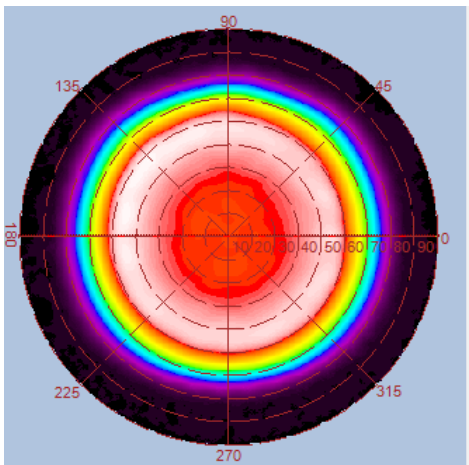
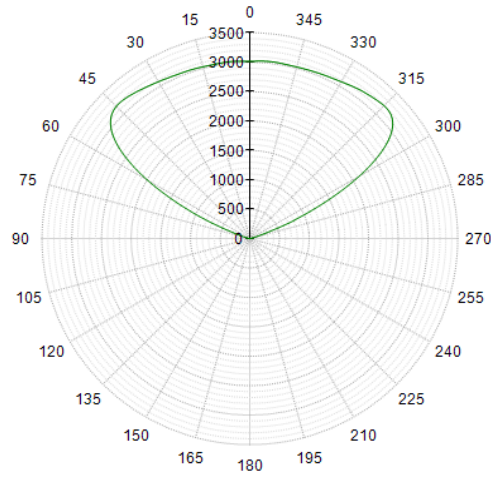
Height	E Avg.	E Max.	Diameter
1.0M	1273 Lx	3322 Lx	396 cm
2.0M	293 Lx	710 Lx	793 cm
3.0M	127 Lx	300 Lx	1190 cm
4.0M	70 Lx	164 Lx	1587 cm
5.0M	44 Lx	103 Lx	1983 cm



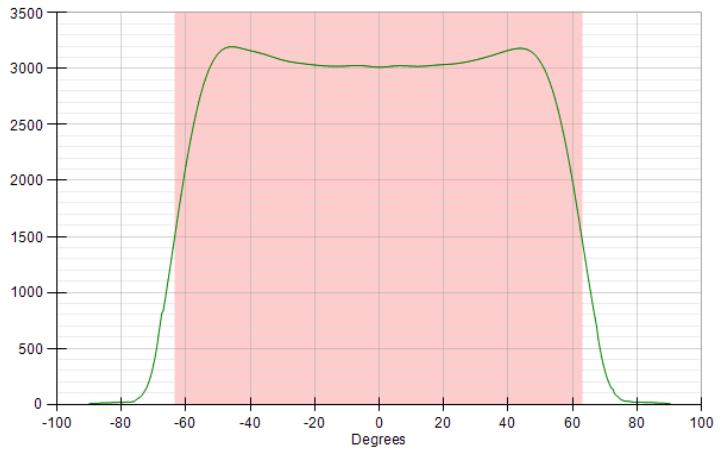
**GL-FL100-NW-120D / CCT : 4000K**



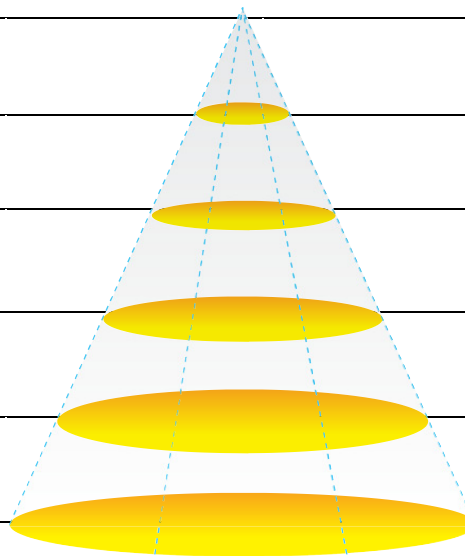
光強度(Candela)



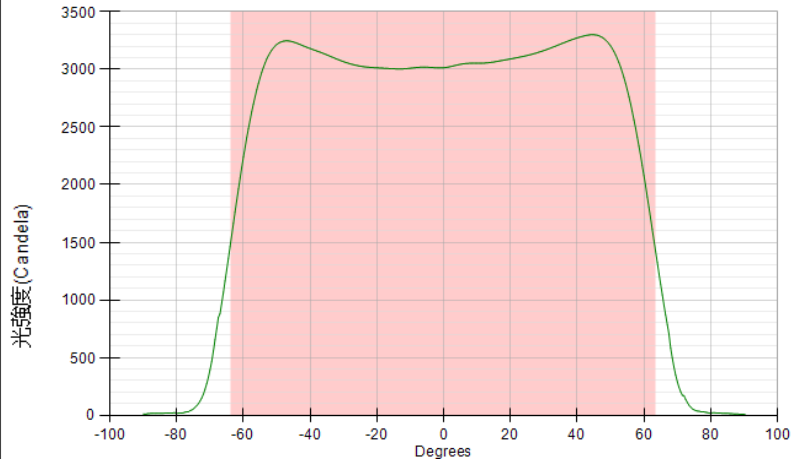
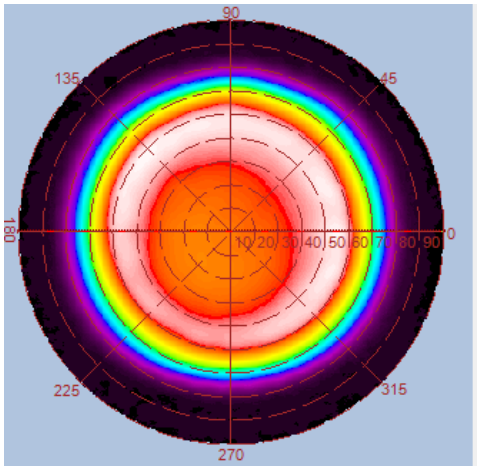
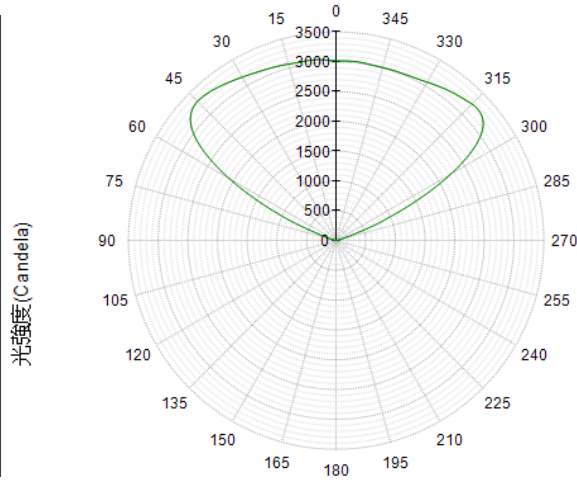
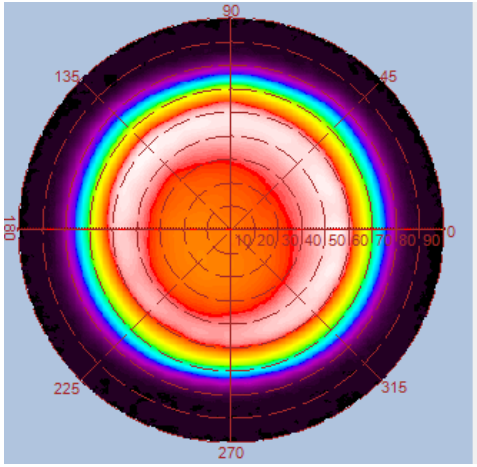
光強度(Candela)



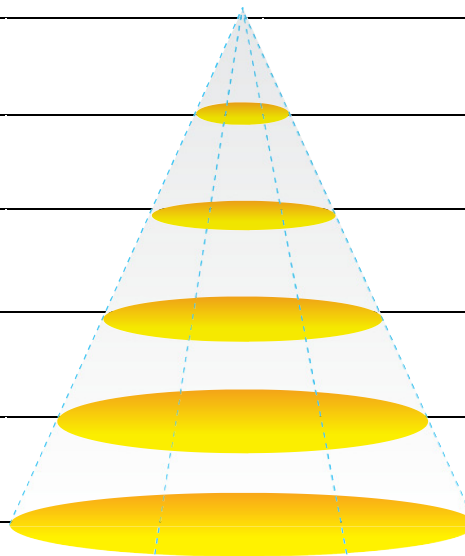
Height	E Avg.	E Max.	Diameter
1.0M	1400 Lx	3327 Lx	396 cm
2.0M	337 Lx	774 Lx	793 cm
3.0M	148 Lx	338 Lx	1190 cm
4.0M	82 Lx	188 Lx	1587 cm
5.0M	52 Lx	119 Lx	1983 cm



**GL-FL100-CW-120D / CCT : 5000K**



Height	E Avg.	E Max.	Diameter
1.0M	1397 Lx	3330 Lx	405 cm
2.0M	338 Lx	785 Lx	811 cm
3.0M	148 Lx	340 Lx	1216 cm
4.0M	83 Lx	189 Lx	1622 cm
5.0M	52 Lx	120 Lx	2027 cm





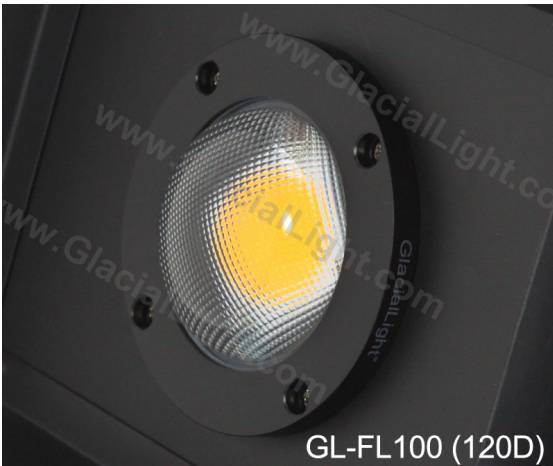
**Gallery**



GL-FL100(120D)



GL-FL100(70D)



GL-FL100 (120D)



GL-FL100(70D)



8 steps of adjustment



IP68 power connector