



Features

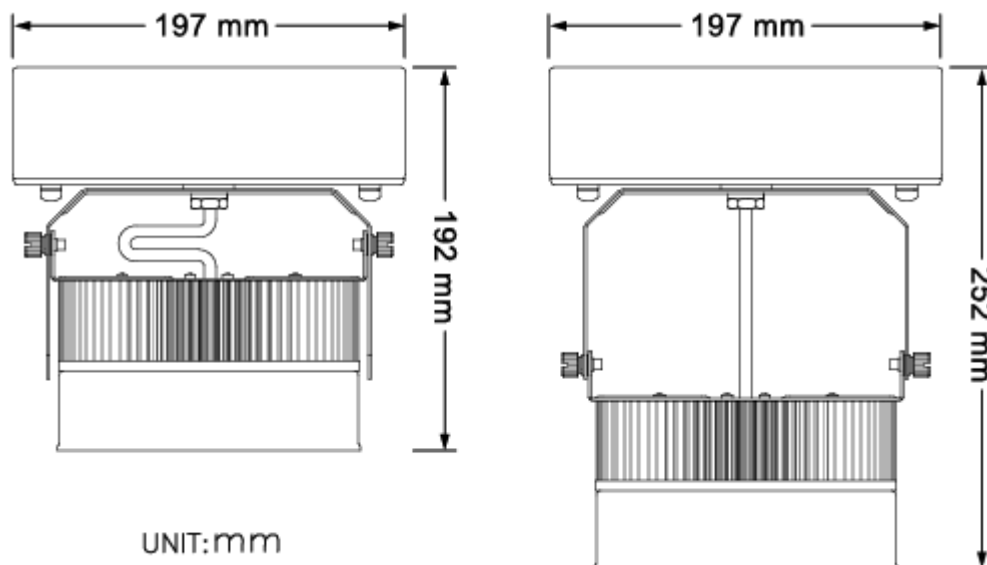
- GL-BL60 gimbal mount Bay Light to be adjusted 360 degrees horizontally or 180 degrees vertically.
- High system efficacy up to 116 lm/W.
- GL-BL60 can be mounted to a ceiling, on a wall or ground surfaces, and suspended with a chain.
- It can operate at ambient temperatures from $-40^{\circ}\text{C} \sim +50^{\circ}\text{C}$.
- IP66 certified.
- Optional dimming available.



Specifications

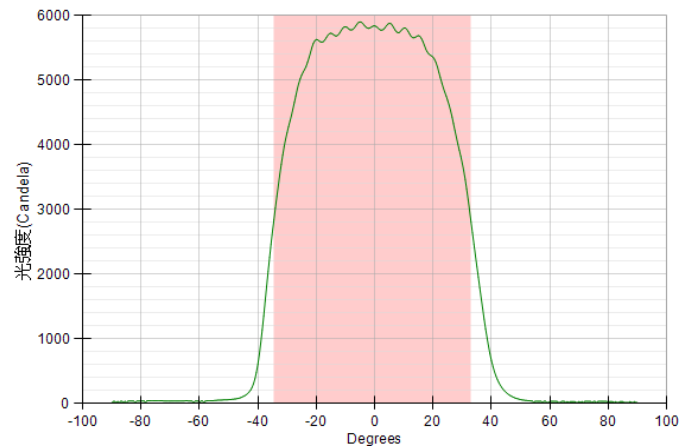
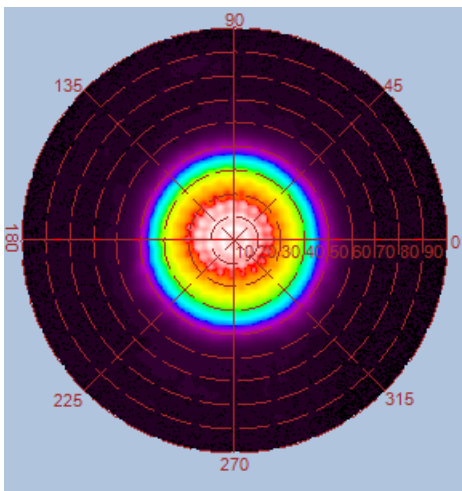
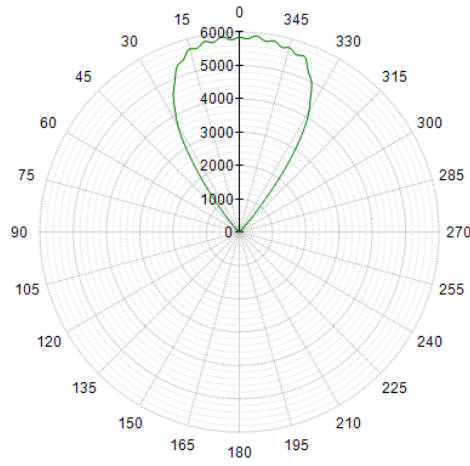
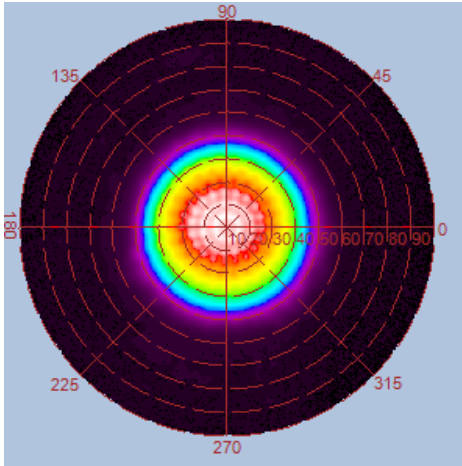
Type	GL-BL60-WW	GL-BL60-NW	GL-BL60-CW
Energy Used	54W		
Rated Life	30,000 Hours		
Input Voltage	100-240V AC (Driver with cUL Certificate Support 277V AC for North America only)		
Power Factor (PF)	0.98 at 120V AC, 0.94 at 240V AC		
CCT (color)	3000K	4000K	5000K
Luminous Flux	5900 lm	6150 lm	6250 lm
System Efficacy	109 lm/W	114 lm/W	116 lm/W
CRI (Minimum)	80	80	80
Beam Angle	70° / 120° (with lampshade)		
Dimension	Adjustable height Φ 197 x 192mm ~ Φ 197 x 252mm		
IP Rating	IP66		
Operation Temperature	-40°C ~ +50°C		
Net Weight	2.0 kg (with driver & lampshade)		
Package	4 Boxes / Carton		

Outline / Dimension

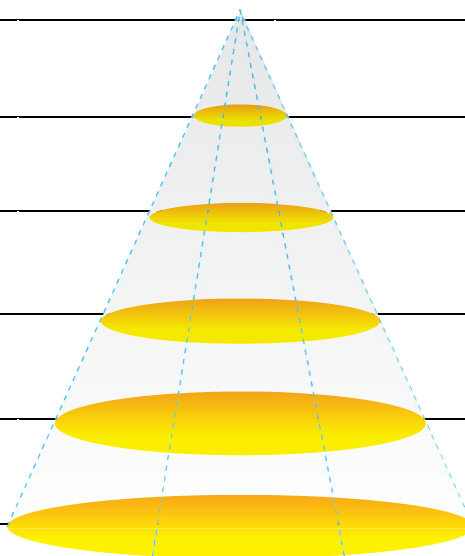


Luminous Intensity Distribution Diagram

GL-BL60-WW-70D / CCT : 3000K

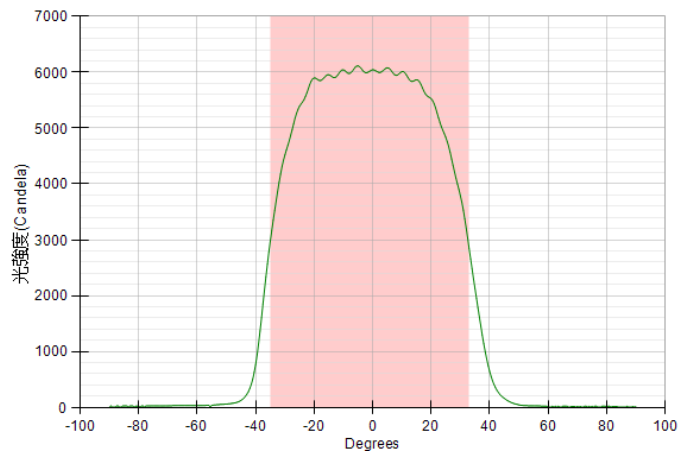
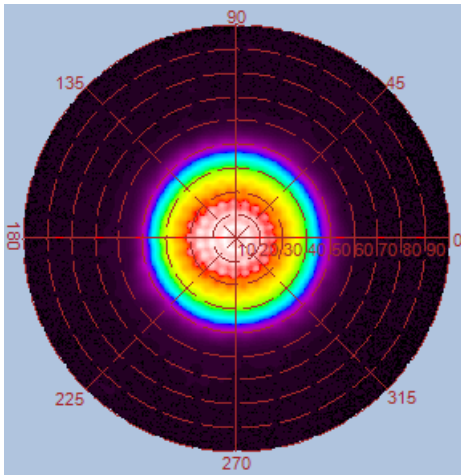
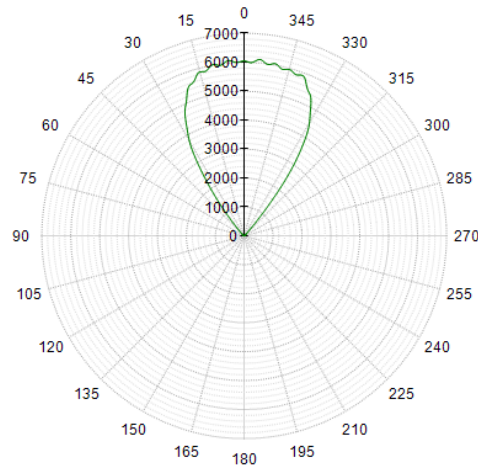
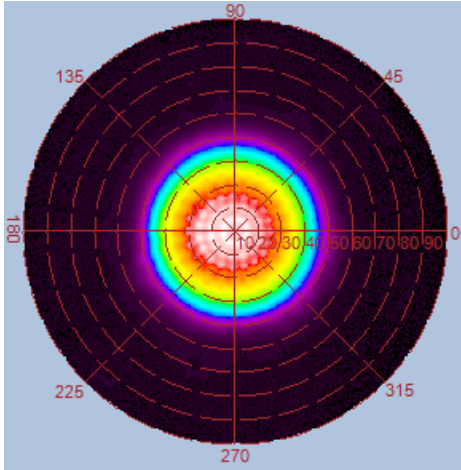


Height	E Avg.	E Max.	Diameter
1.0M	4888 Lx	7220 Lx	133 cm
2.0M	1146 Lx	1609 Lx	267 cm
3.0M	499 Lx	688 Lx	400 cm
4.0M	278 Lx	380 Lx	534 cm
5.0M	176 Lx	240 Lx	668 cm

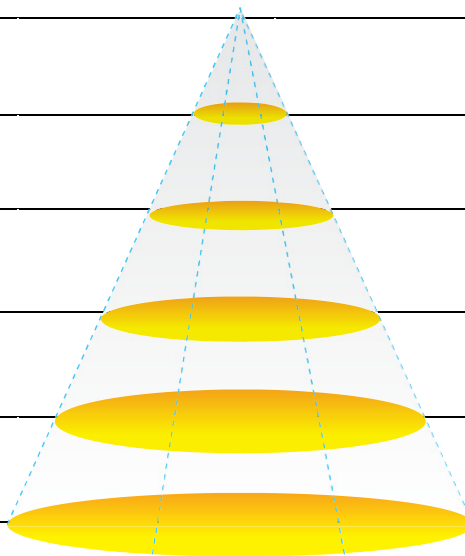


Luminous Intensity Distribution Diagram

GL-BL60-NW-70D / CCT : 4000K

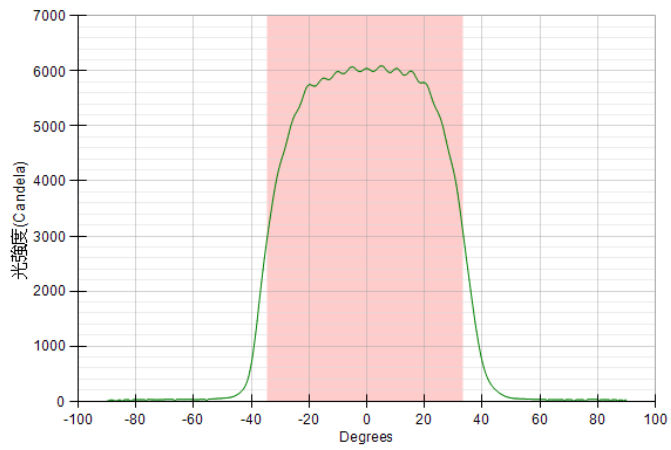
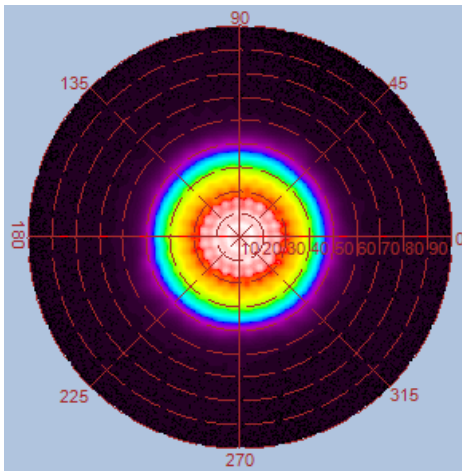
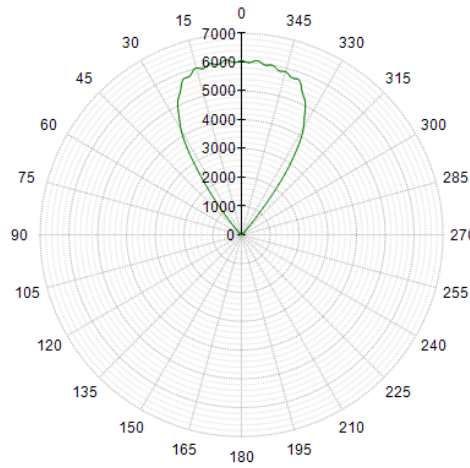
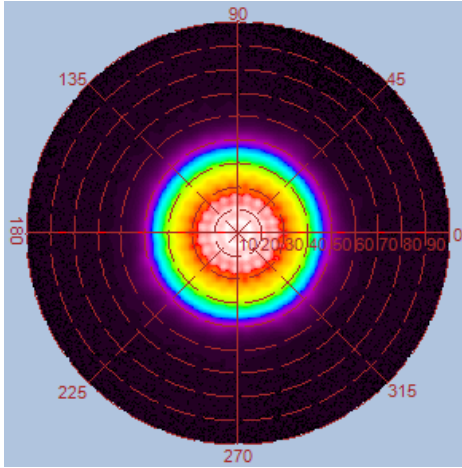


Height	E Avg.	E Max.	Diameter
1.0M	5069 Lx	7540 Lx	134 cm
2.0M	1183 Lx	1658 Lx	269 cm
3.0M	516 Lx	710 Lx	404 cm
4.0M	287 Lx	393 Lx	539 cm
5.0M	183 Lx	247 Lx	674 cm

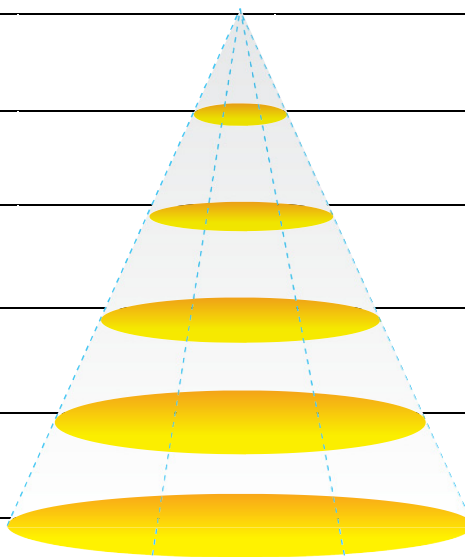


Luminous Intensity Distribution Diagram

GL-BL60-CW-70D / CCT : 5000K

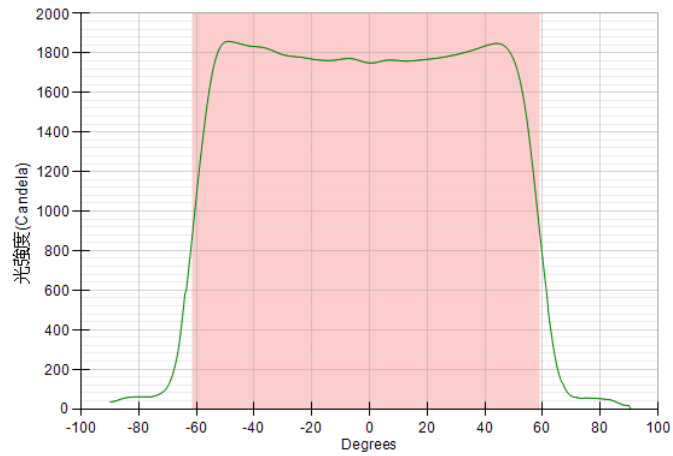
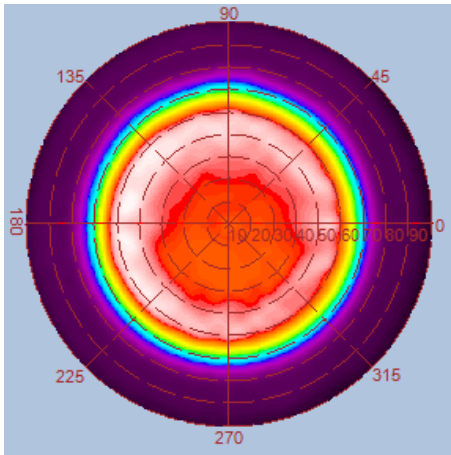
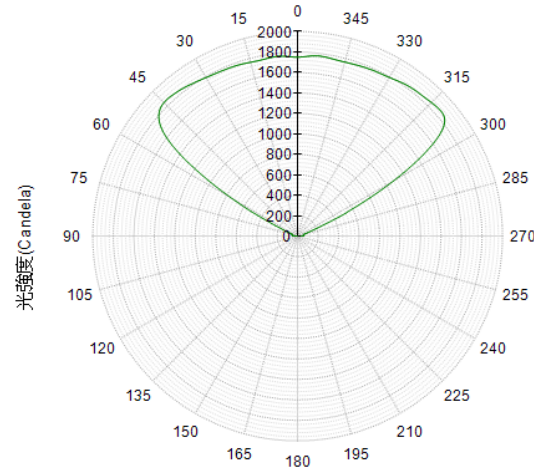
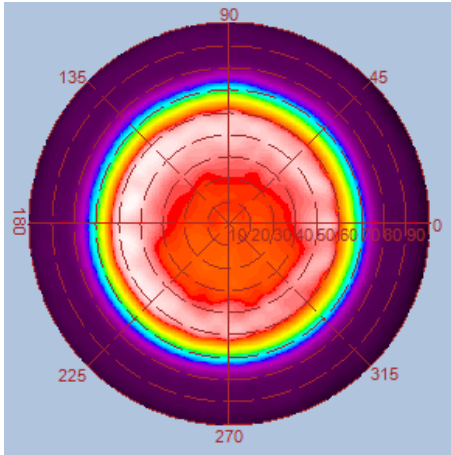


Height	E Avg.	E Max.	Diameter
1.0M	5095 Lx	7525 Lx	134 cm
2.0M	1194 Lx	1660 Lx	269 cm
3.0M	519 Lx	703 Lx	404 cm
4.0M	289 Lx	393 Lx	539 cm
5.0M	184 Lx	249 Lx	674 cm

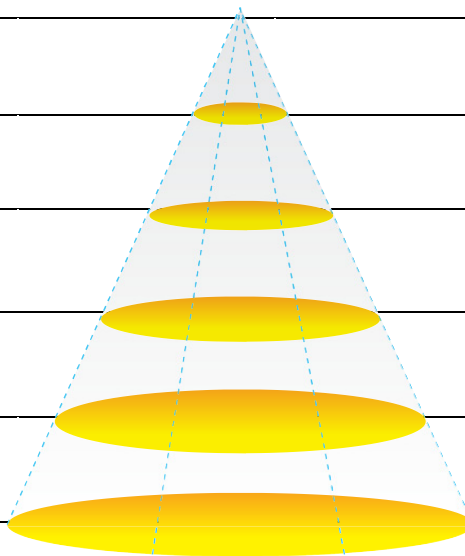


Luminous Intensity Distribution Diagram

GL-BL60-WW-120D / CCT : 3000K

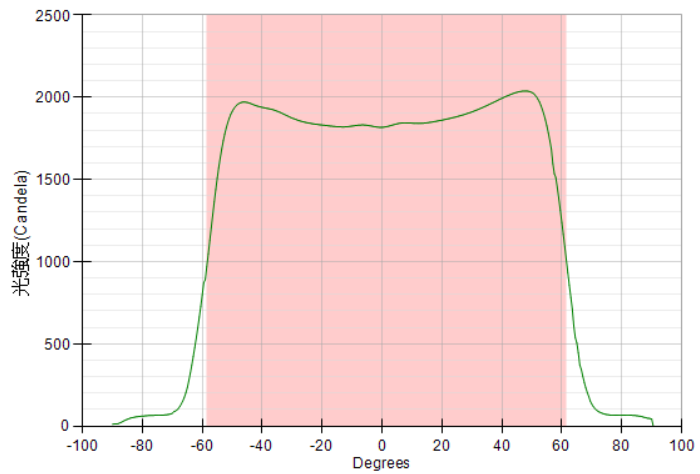
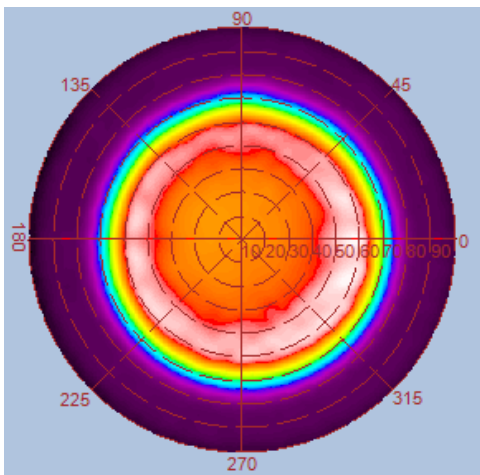
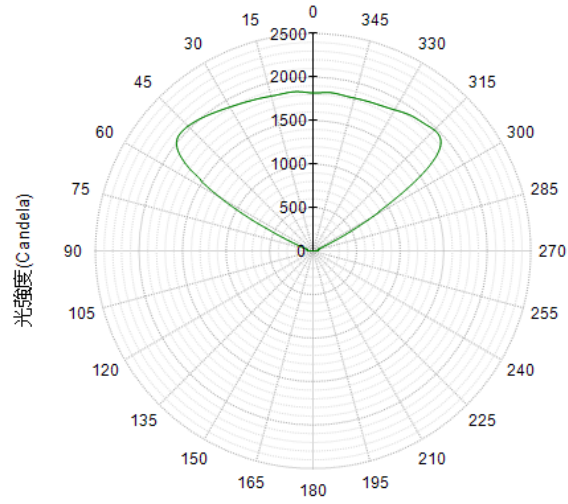
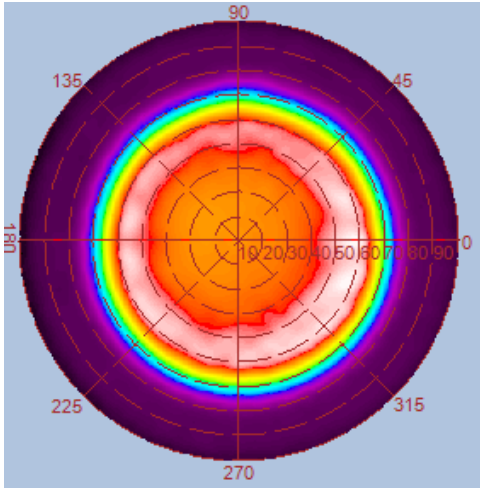


Height	E Avg.	E Max.	Diameter
1.0M	1008 Lx	2369 Lx	349 cm
2.0M	230 Lx	500 Lx	699 cm
3.0M	99 Lx	211 Lx	1049 cm
4.0M	55 Lx	115 Lx	1399 cm
5.0M	35 Lx	72 Lx	1749 cm

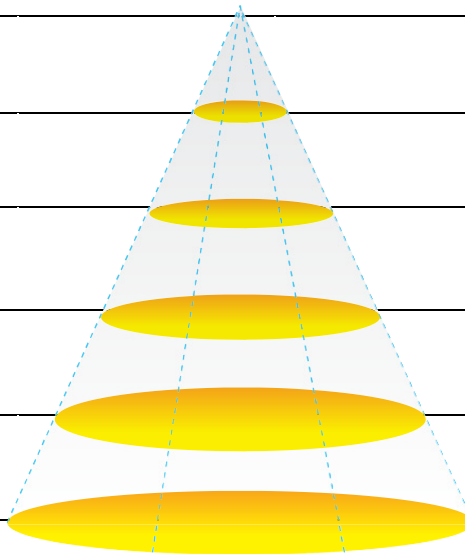


Luminous Intensity Distribution Diagram

GL-BL60-NW-120D / CCT : 4000K

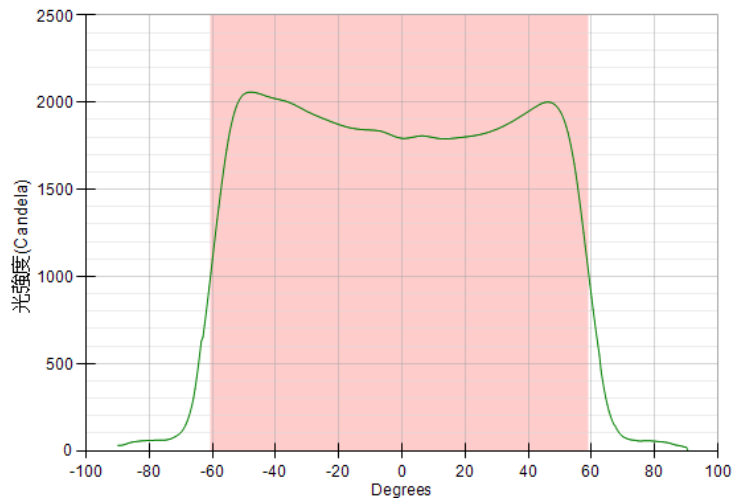
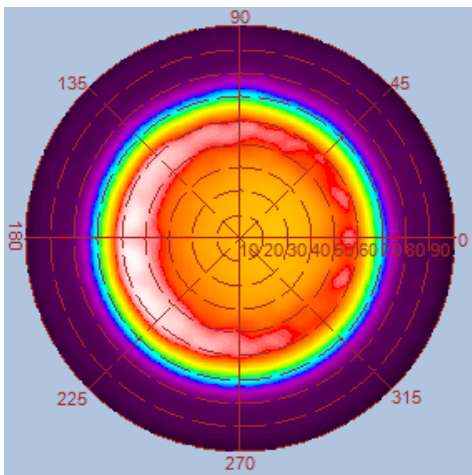
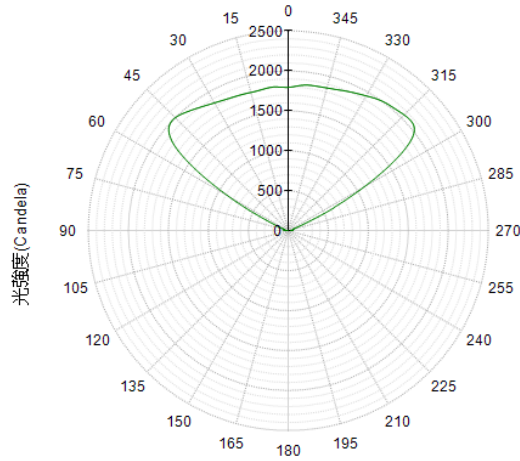
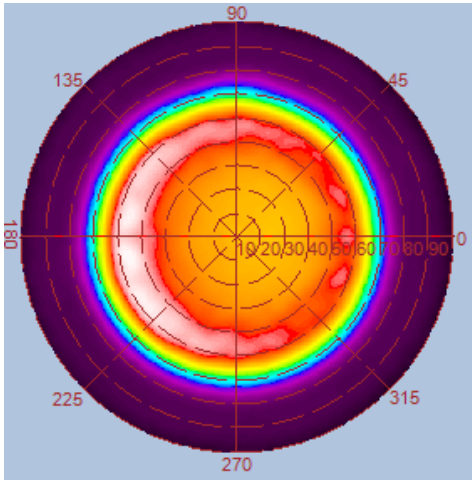


Height	E Avg.	E Max.	Diameter
1.0M	1077 Lx	2475 Lx	346 cm
2.0M	246 Lx	520 Lx	692 cm
3.0M	106 Lx	219 Lx	1039 cm
4.0M	58 Lx	120 Lx	1385 cm
5.0M	37 Lx	76 Lx	1732 cm

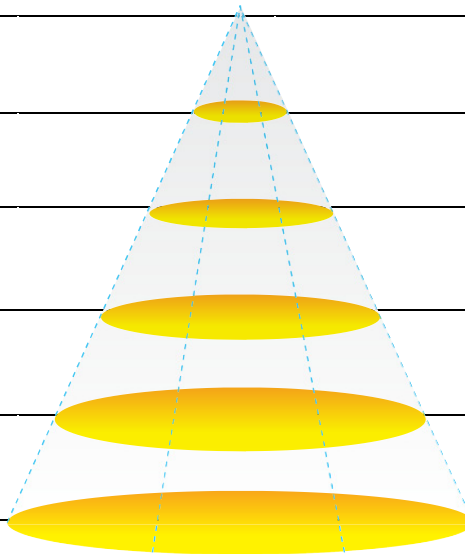


Luminous Intensity Distribution Diagram

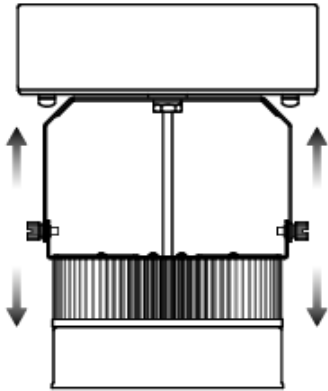
GL-BL60-CW-120D / CCT : 5000K



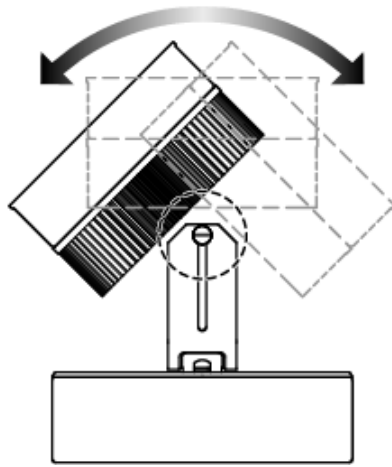
Height	E Avg.	E Max.	Diameter
1.0M	1089 Lx	2463 Lx	342 cm
2.0M	248 Lx	517 Lx	685 cm
3.0M	107 Lx	217 Lx	1028 cm
4.0M	59 Lx	118 Lx	1371 cm
5.0M	37 Lx	75 Lx	1714 cm



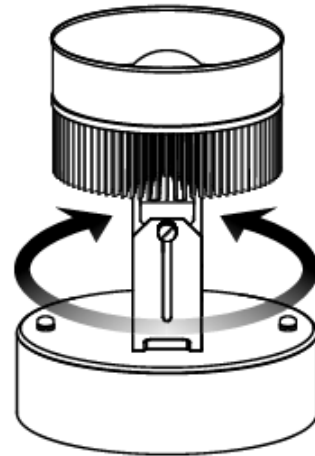
Adjust to desired height.



180 degrees adjustment



360 degrees rotation



GL-BL60(70D Lens)



GL-BL60(120D Lens)





Suspension Chain / Pendant Rod / Outdoor Stake for optional.