



Features

- High system efficacy up to 111 lm/W.
- 16,300 lumen output for high bay lighting and outdoor lighting.
- IP66 rated rugged for outdoor use.
- 60 degree Lens standard for bay lighting.
- 120 degree Lens available for flood lighting and area illumination.
- Lampshades available for 60 degree and 120 degree. (optional accessory)
- Outdoor-ready rotating mounting bracket available. (optional accessory)
- Tulip I Lux Enhancer focuses light for tighter beam angle with increased throw. (optional accessory)



Specifications

GL-BL150 (60D Glass Lens)

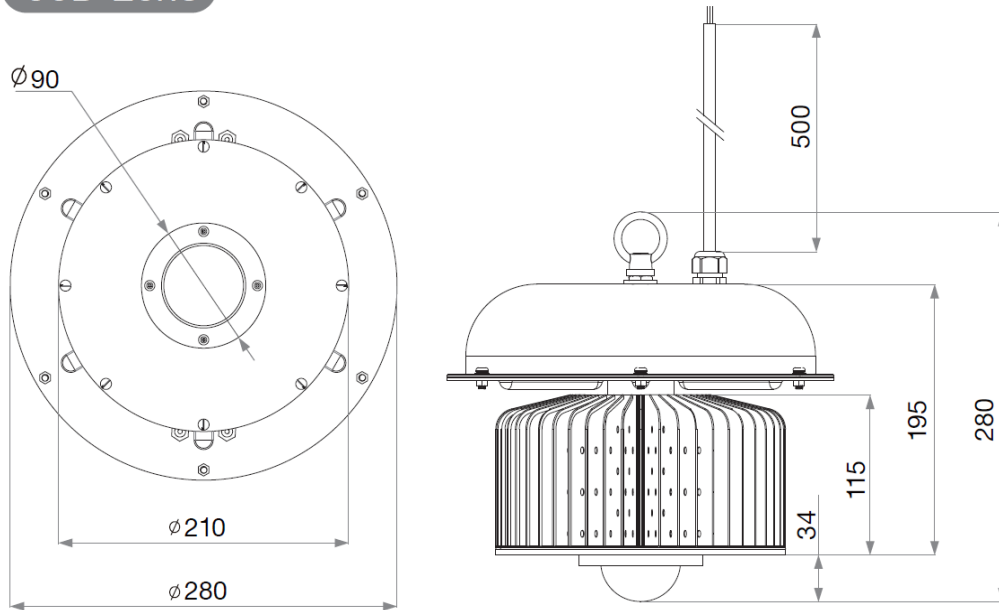
Type	GL-BL150-WW	GL-BL150-NW	GL-BL150-CW
Energy Used	147W		
Rated Life	30,000 Hours		
Input Voltage	100-240V AC		
Power Factor (PF)	0.98 @120V AC, 0.94 @240V AC		
CCT (color)	3000K	4000K	5000K
Luminous Flux	14700 lm	15800 lm	16200 lm
System Efficacy	100 lm/W	107 lm/W	110 lm/W
CRI (Minimum)	80	80	80
Beam Angle	60° Without Lampshade		
Dimension	Φ280 x 280 mm		
IP Rating	IP66		
Operation Temperature	-40°C ~ +50°C		
Bundled Driver	GP-LS150P-60 (Driver Output : Constant Current 2.5A , 60V)		
Net Weight	3.6 kg (Without Lampshade) / 4.1 kg (With Lampshade)		
Package	1 Carton		

GL-BL150 (120D Glass Lens)

Type	GL-BL150-WW	GL-BL150-NW	GL-BL150-CW
Energy Used	147W		
Rated Life	30,000 Hours		
Input Voltage	100-240V AC		
Power Factor (PF)	0.98 @120V AC, 0.94 @240V AC		
CCT (color)	3000K	4000K	5000K
Luminous Flux	14800 lm	15900 lm	16300 lm
System Efficacy	101 lm/W	108 lm/W	111 lm/W
CRI (Minimum)	80	80	80
Beam Angle	120° Without Lampshade		
Dimension	Φ280 x 268 mm		
IP Rating	IP66		
Operation Temperature	-40°C ~ +50°C		
Bundled Driver	GP-LS150P-60 (Driver Output: Constant Current 2.5A , 60V)		
Net Weight	3.6 kg (Without Lampshade) / 4.1 kg (With Lampshade)		
Package	1 Carton		

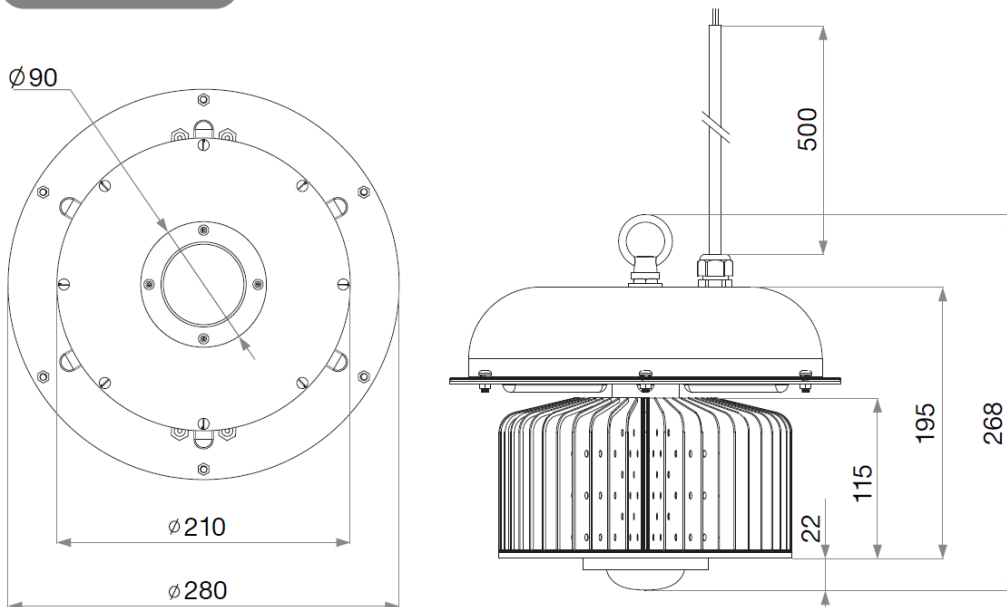
Outline / Dimension

60D Lens



UNIT : mm / Net Weight : 3.6kg (Without Lampshade)

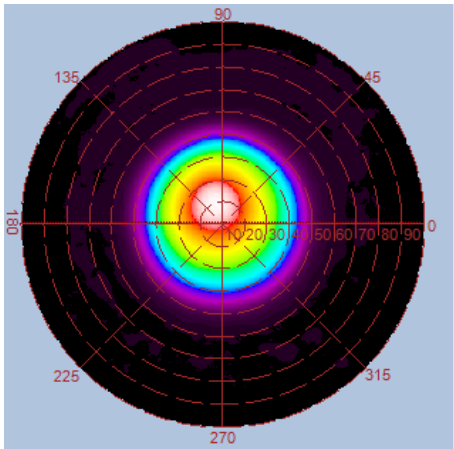
120D Lens



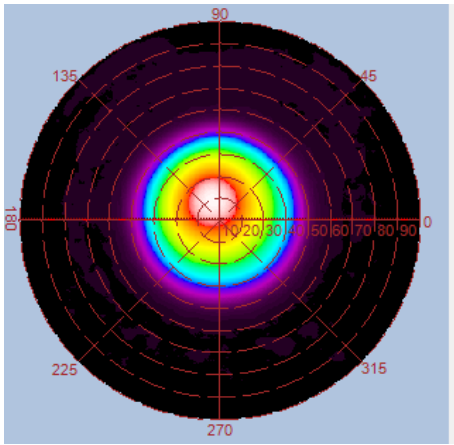
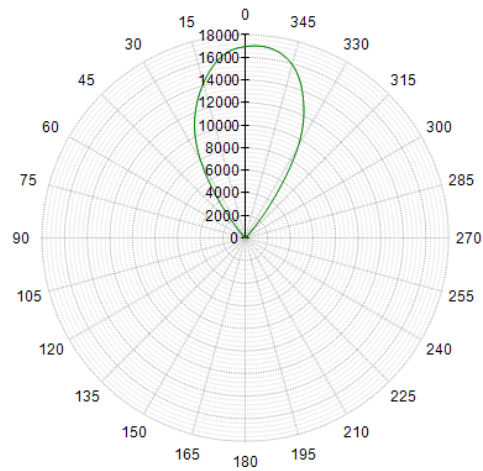
UNIT : mm / Net Weight : 3.6kg (Without Lampshade)

Luminous Intensity Distribution Diagram

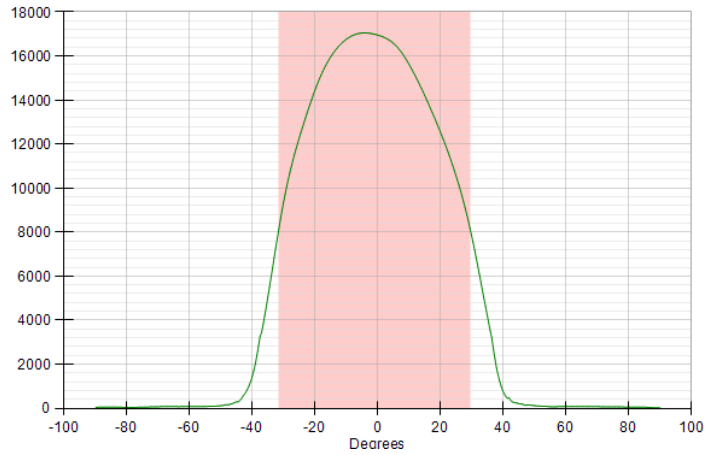
GL-BL150-WW-60D / CCT : 3000K



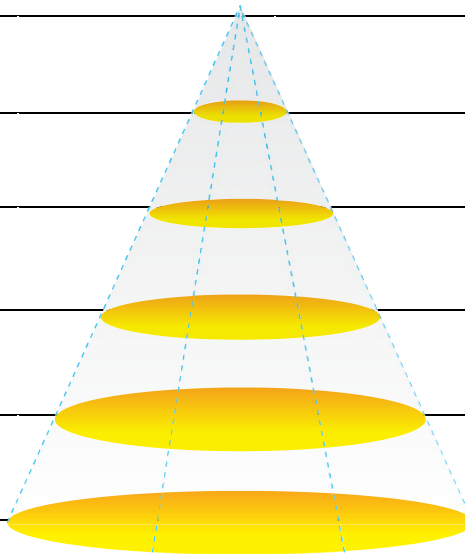
光強度 (Candela)



光強度 (Candela)

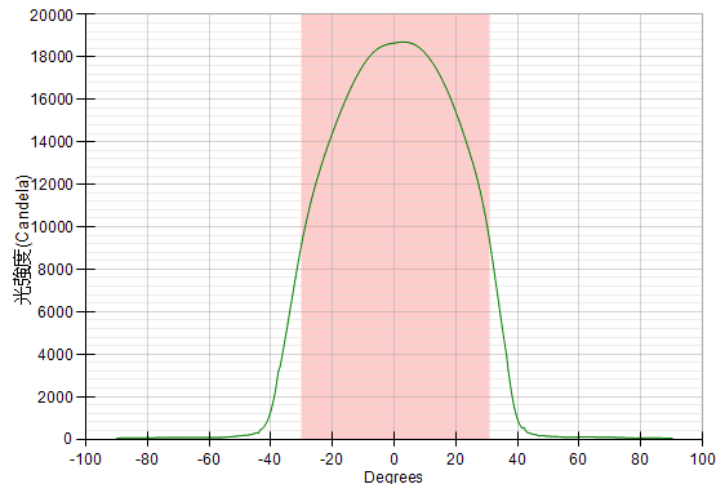
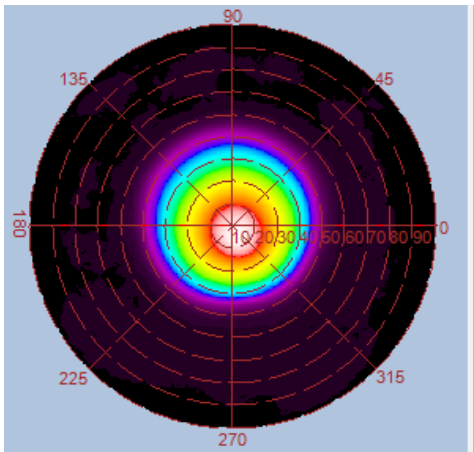
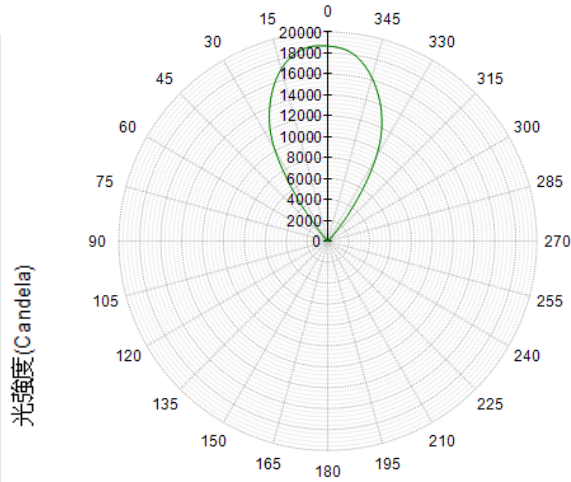
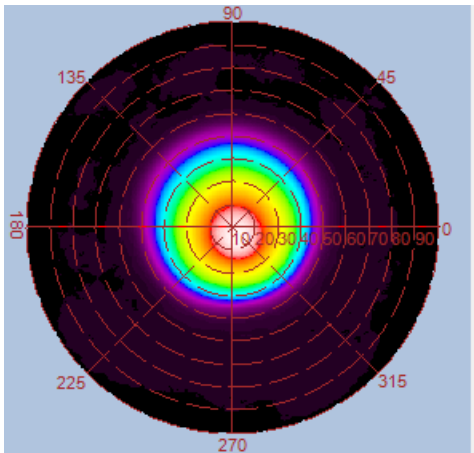


Height	E Avg.	E Max.	Diameter
1.0M	13073 Lx	18861 Lx	117 cm
2.0M	3157 Lx	4451 Lx	235 cm
3.0M	1389 Lx	1941 Lx	353 cm
4.0M	775 Lx	1079 Lx	471 cm
5.0M	495 Lx	682 Lx	589 cm

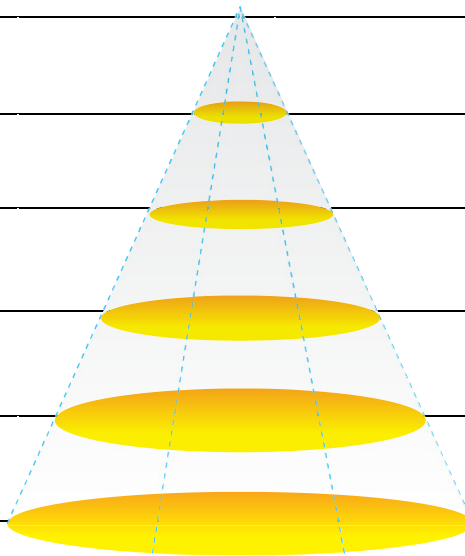


Luminous Intensity Distribution Diagram

GL-BL150-NW-60D / CCT : 4000K

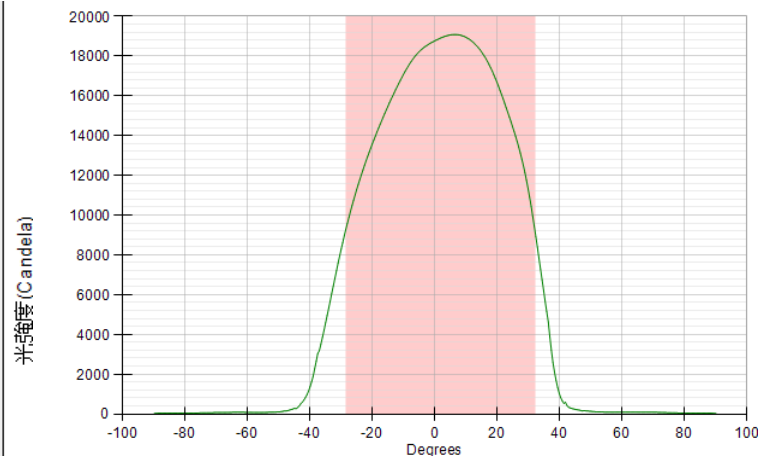
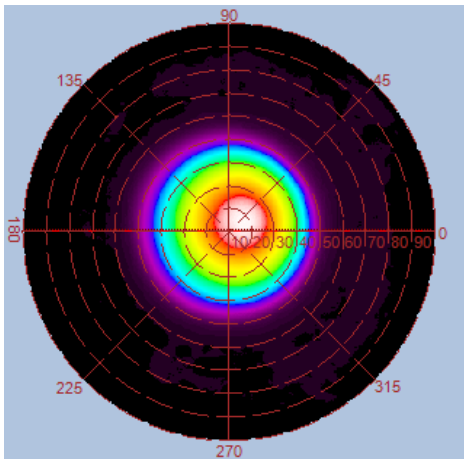
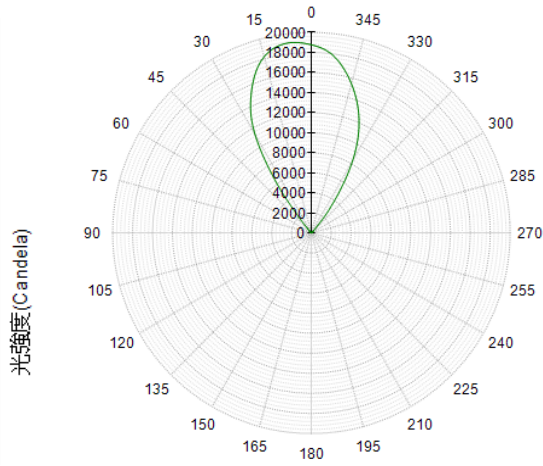
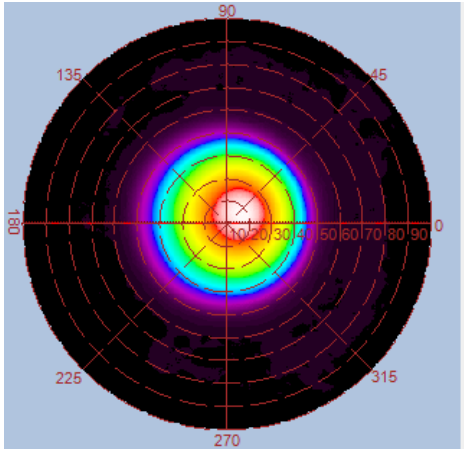


Height	E Avg.	E Max.	Diameter
1.0M	14414 Lx	20853 Lx	117 cm
2.0M	3483 Lx	4890 Lx	235 cm
3.0M	1532 Lx	2135 Lx	353 cm
4.0M	857 Lx	1188 Lx	471 cm
5.0M	546 Lx	748 Lx	589 cm

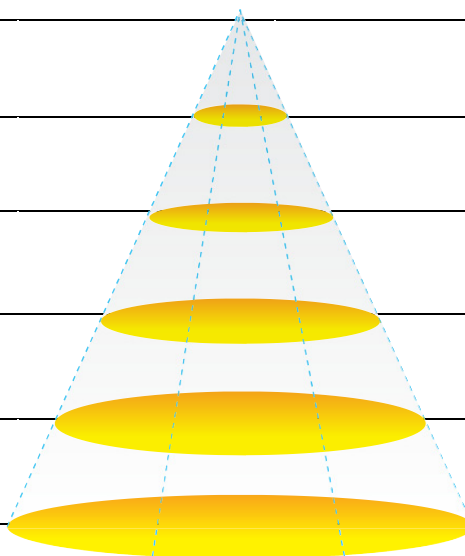


Luminous Intensity Distribution Diagram

GL-BL150-CW-60D / CCT : 5000K

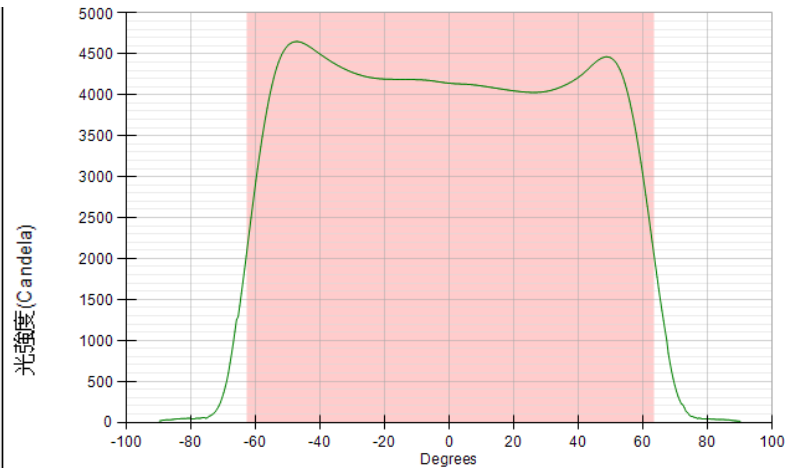
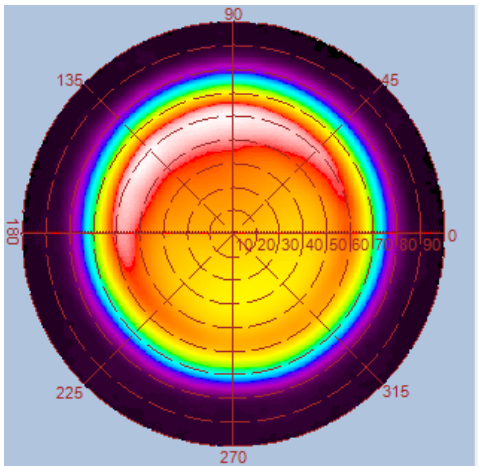
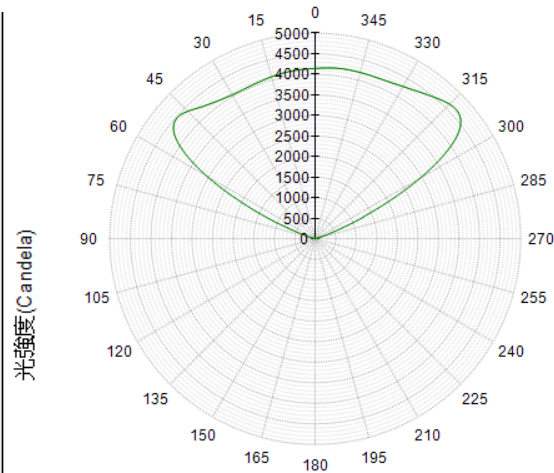
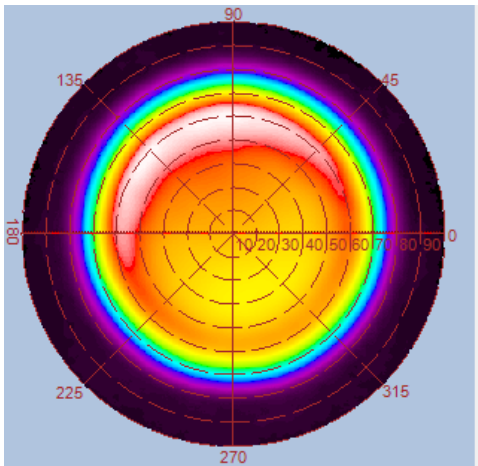


Height	E Avg.	E Max.	Diameter
1.0M	14548 Lx	21080 Lx	117 cm
2.0M	3532 Lx	4944 Lx	235 cm
3.0M	1550 Lx	2152 Lx	353 cm
4.0M	867 Lx	1197 Lx	471 cm
5.0M	553 Lx	766 Lx	589 cm

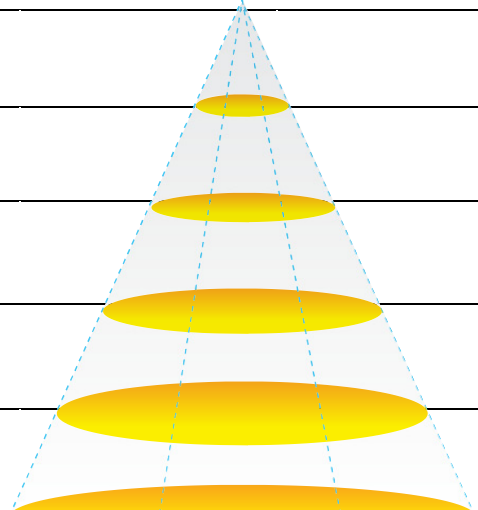


Luminous Intensity Distribution Diagram

GL-BL150-WW-120D / CCT : 3000K



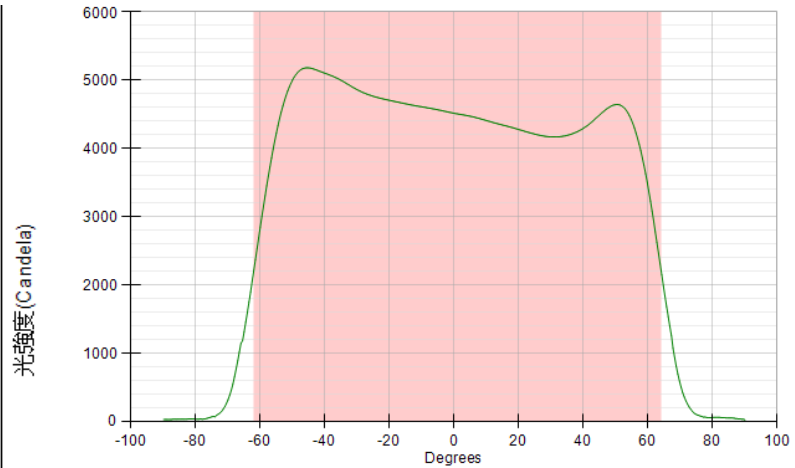
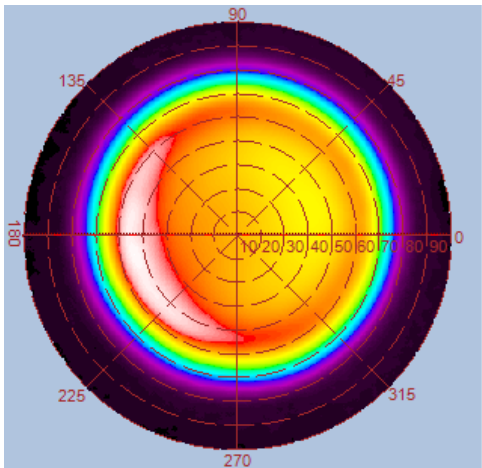
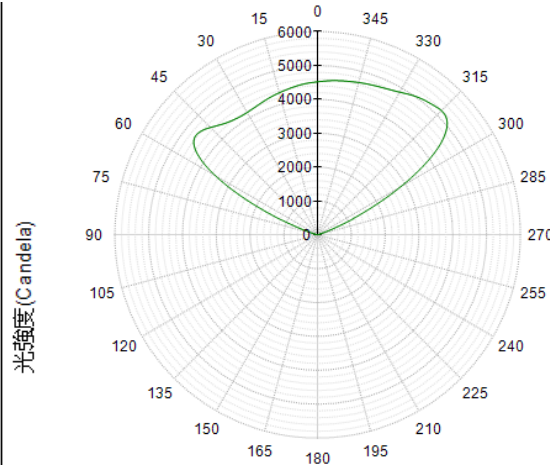
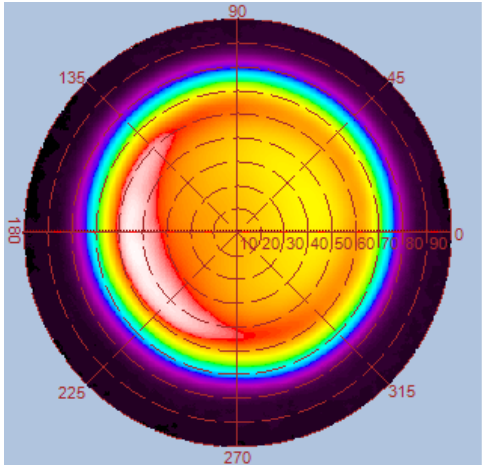
Height	E Avg.	E Max.	Diameter
1.0M	1917 Lx	4470 Lx	396 cm
2.0M	466 Lx	1057 Lx	793 cm
3.0M	205 Lx	462 Lx	1190 cm
4.0M	114 Lx	258 Lx	1587 cm
5.0M	73 Lx	164 Lx	1983 cm



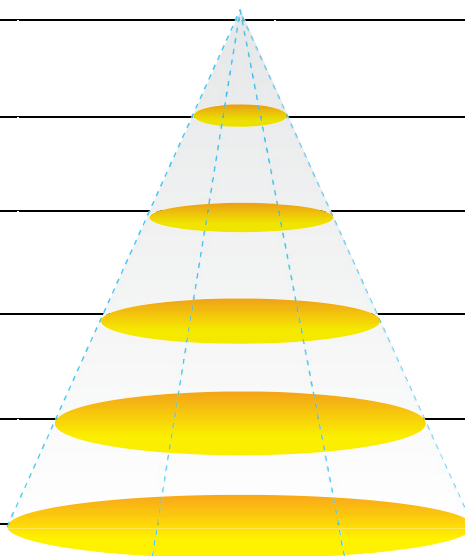
A diagram showing a light cone with horizontal cross-sections at different heights, corresponding to the table above. The cross-sections are yellow ellipses that increase in size as the height increases.

Luminous Intensity Distribution Diagram

GL-BL150-NW-120D / CCT : 4000K

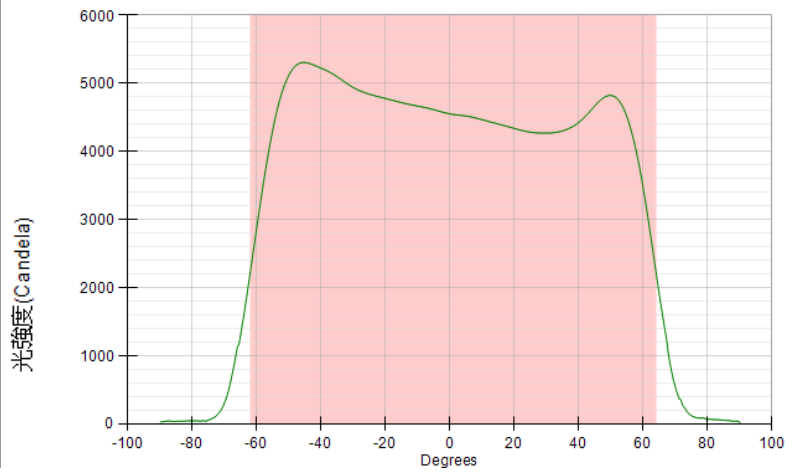
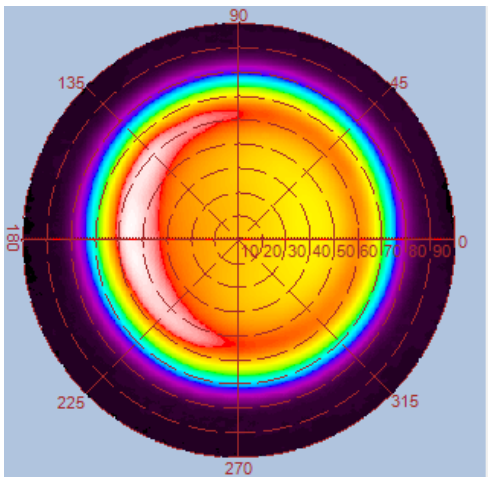
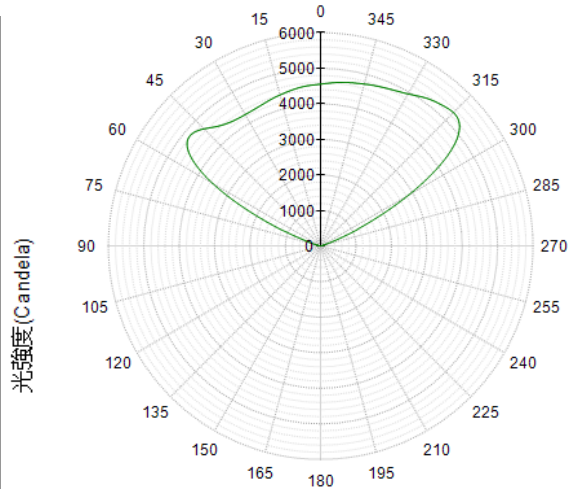
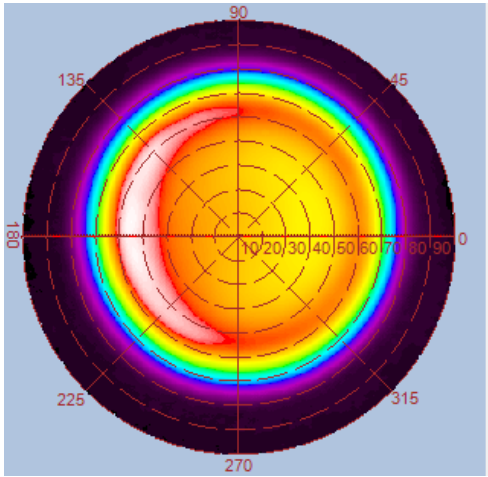


Height	E Avg.	E Max.	Diameter
1.0M	2073 Lx	4861 Lx	396 cm
2.0M	504 Lx	1150 Lx	793 cm
3.0M	221 Lx	504 Lx	1190 cm
4.0M	124 Lx	281 Lx	1587 cm
5.0M	79 Lx	178 Lx	1983 cm

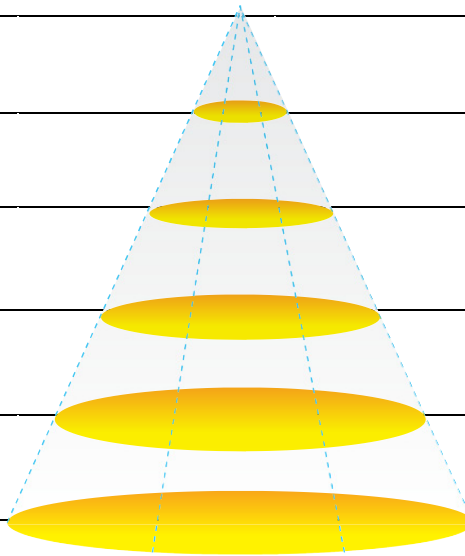


Luminous Intensity Distribution Diagram

GL-BL150-CW-120D / CCT : 5000K

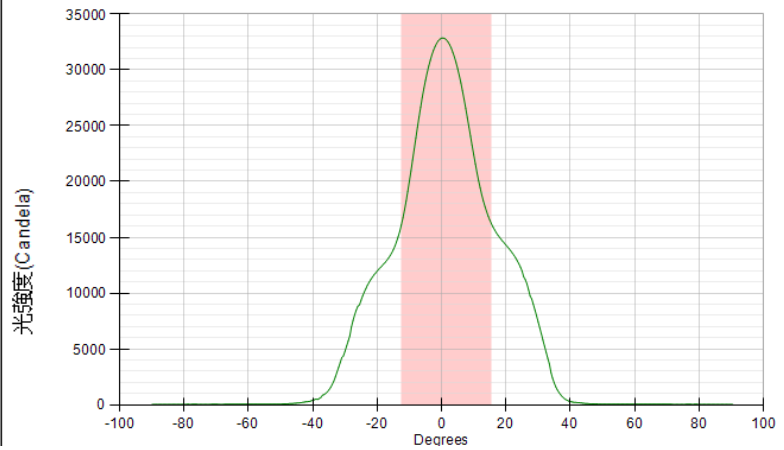
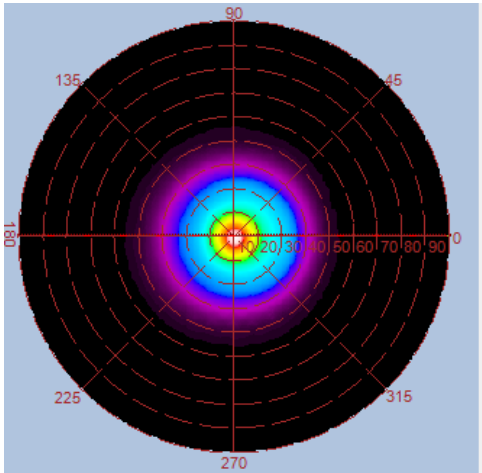
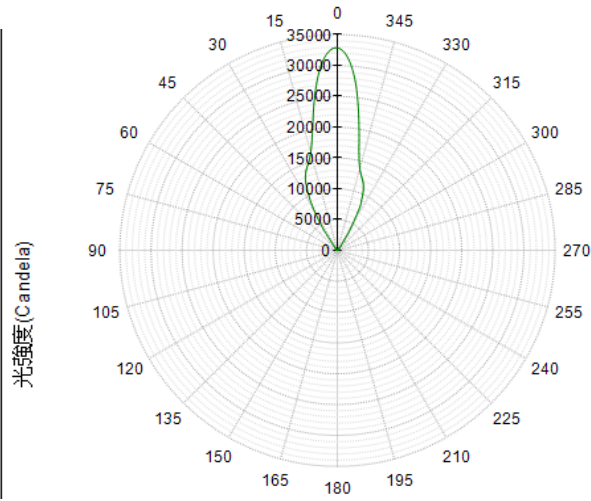
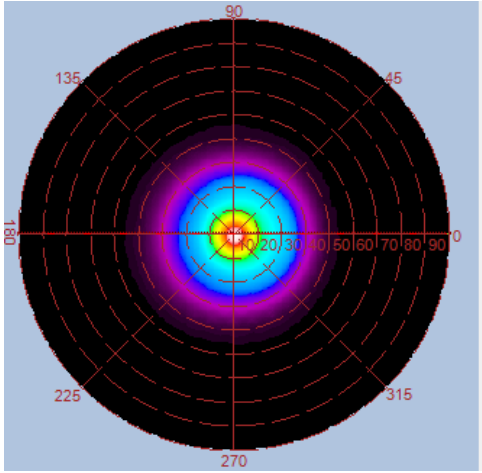


Height	E Avg.	E Max.	Diameter
1.0M	2110 Lx	4934 Lx	396 cm
2.0M	513 Lx	1163 Lx	793 cm
3.0M	226 Lx	510 Lx	1190 cm
4.0M	126 Lx	284 Lx	1587 cm
5.0M	80 Lx	181 Lx	1983 cm

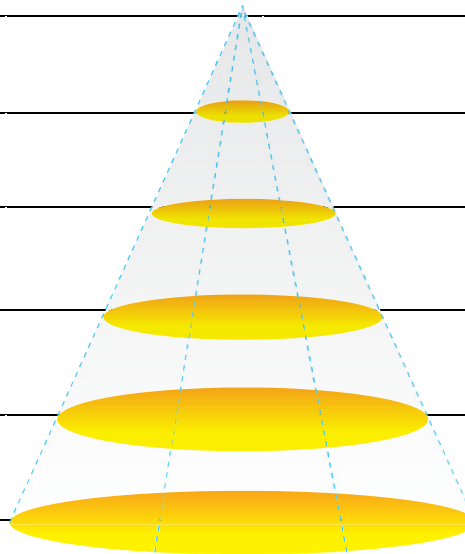


Luminous Intensity Distribution Diagram (with LUX Enhancer)

GL-BL150-WW-60D / CCT : 3000K

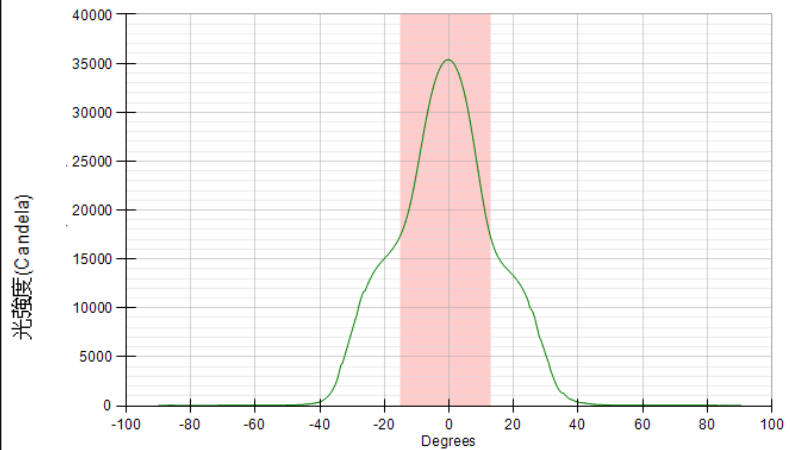
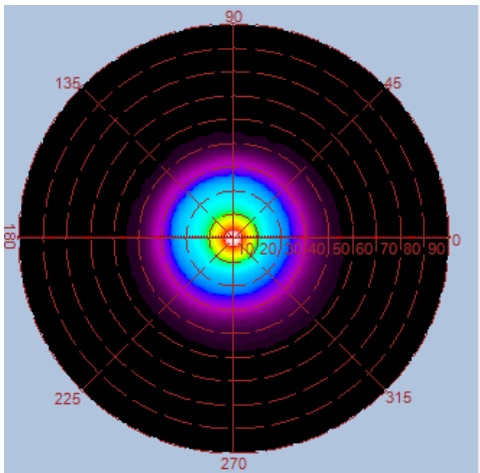
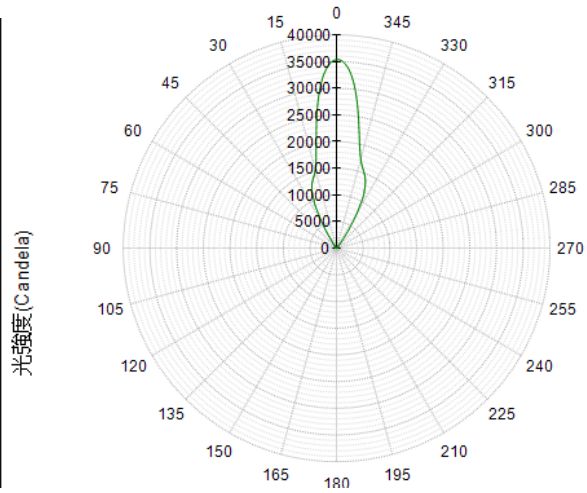
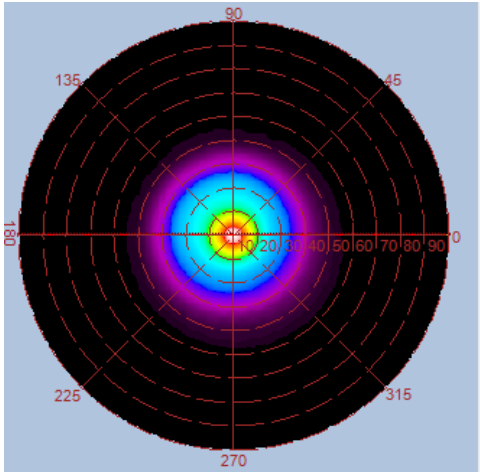


Height	E Avg.	E Max.	Diameter
1.0M	34398 Lx	52120 Lx	49 cm
2.0M	7413 Lx	10929 Lx	99 cm
3.0M	3115 Lx	4446 Lx	149 cm
4.0M	1705 Lx	2400 Lx	199 cm
5.0M	1072 Lx	1507 Lx	249 cm

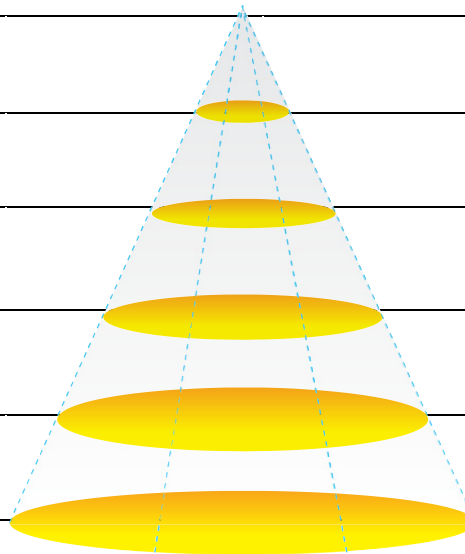


Luminous Intensity Distribution Diagram (with LUX Enhancer)

GL-BL150-NW-60D / CCT : 4000K

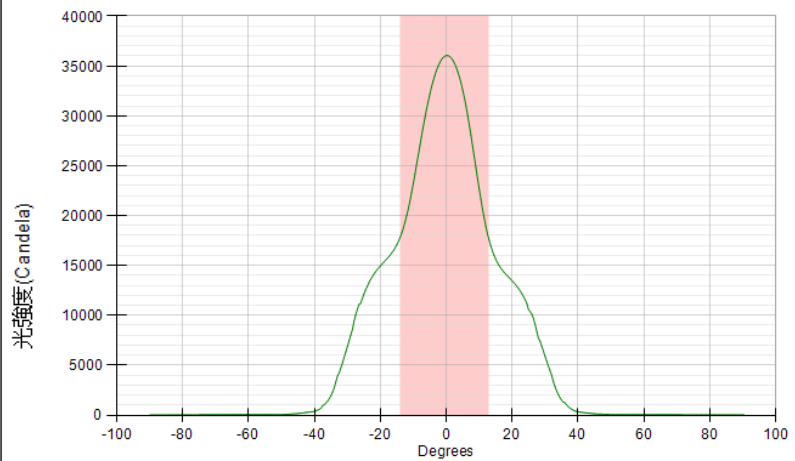
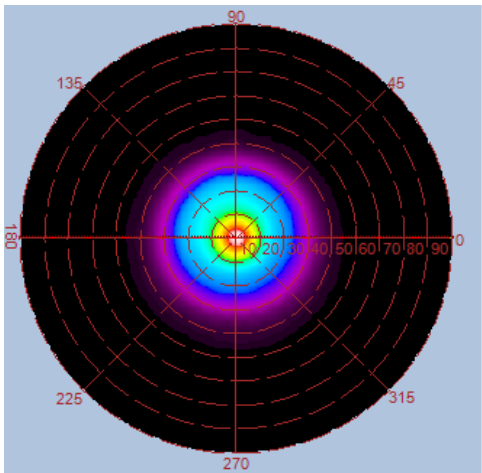
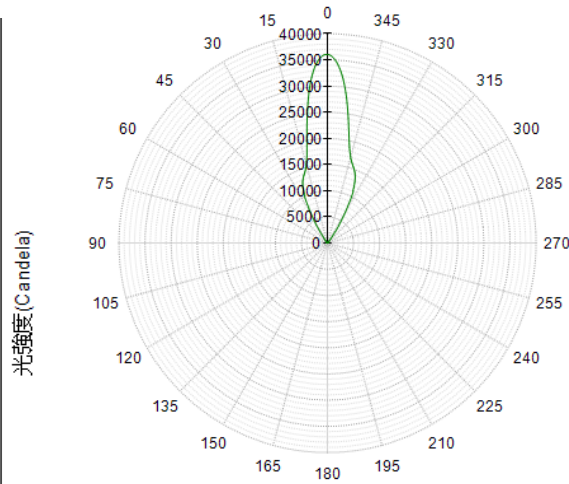
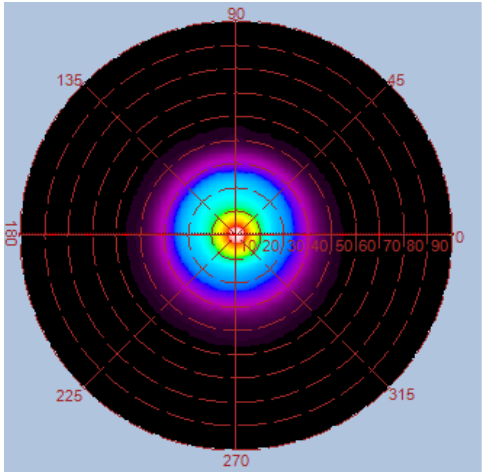


Height	E Avg.	E Max.	Diameter
1.0M	36799 Lx	55671 Lx	49 cm
2.0M	7978 Lx	11610 Lx	99 cm
3.0M	3355 Lx	4752 Lx	149 cm
4.0M	1840 Lx	2574 Lx	199 cm
5.0M	1152 Lx	1597 Lx	249 cm

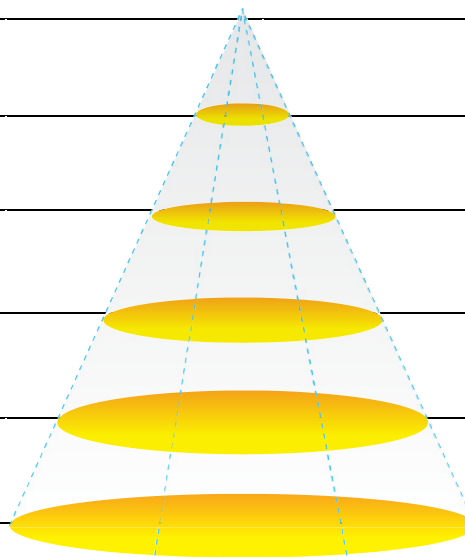


Luminous Intensity Distribution Diagram (with LUX Enhancer)

GL-BL150-CW-60D / CCT : 5000K



Height	E Avg.	E Max.	Diameter
1.0M	37992 Lx	57475 Lx	48 cm
2.0M	8200 Lx	11929 Lx	96 cm
3.0M	3450 Lx	4891 Lx	144 cm
4.0M	1890 Lx	2655 Lx	192 cm
5.0M	1185 Lx	1639 Lx	240 cm



With/Without LUX Enhancer Comparison Table

Item	BL150-60D-CW (without LUX Enhancer)	BL150-60D-CW (with LUX Enhancer)
Input Power(W)	147	147
Luminous Flux (Lm)	16200	14200
CCT (color)	5000K	5000K
Beam Angle	60°	27°
System Efficacy	110 lm/W	97 lm/W
LUX @ 1M (E-Max)	21080	57475
LUX Enhancement (%)	-	273%
Luminous Efficiency (%)	-	87.7%

Photograph



