



## Features

- Highly efficient Metal-Halide replacement at 111lm/W.
- 10,000 lumen output for high bay lighting and outdoor lighting.
- CCT: 3000K, 4000K and 5000K available.
- IP66 rated rugged for outdoor use.
- 70 degree Lens standard for spot lighting.
- 120 degree Lens available for flood lighting and area illumination.
- Lampshades available for 60 degree and 120 degree. (optional accessory)
- Outdoor-ready rotating mounting bracket available. (optional accessory)
- With Unified Glare Rating (UGR) under 19.



## Specifications

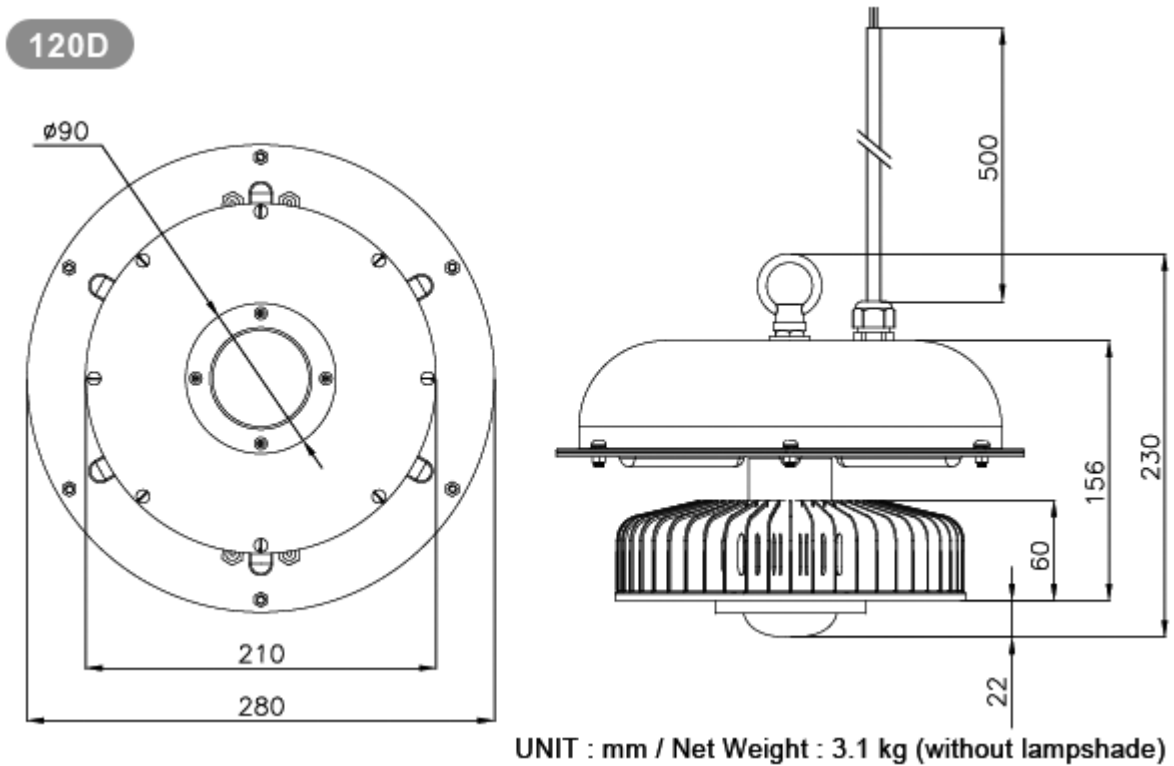
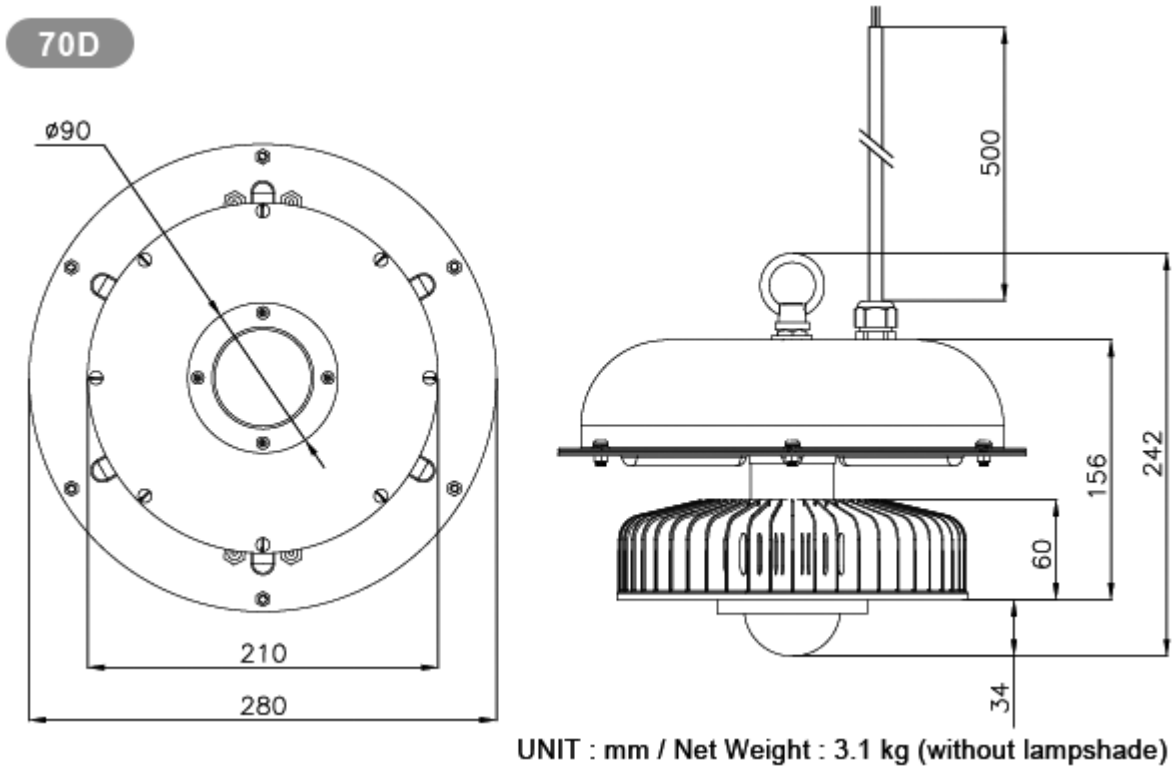
### 70D Glass Lens

Type	GL-BL100-WW	GL-BL100-NW	GL-BL100-CW
Energy Used	96W		
Rated Life	30,000 Hours		
Input Voltage	100-240V AC (Driver with CUL Certificate Support 277V AC for North America only)		
Power Factor (PF)	0.98 at 120V AC, 0.97 at 240V AC		
CCT (color)	3000K	4000K	5000K
Luminous Flux	10000 lm	10500 lm	10700 lm
System Efficacy	104 lm/W	109 lm/W	111 lm/W
CRI (Minimum)	80	80	80
Beam Angle	70°		
Dimension	Φ280 x 242mm (without lampshade)		
IP Rating	IP66		
Operation Temperature	-40°C ~ +50°C *(Note 1)		
Bundled Driver	GP-LS100P-36 1E (Driver Output : Constant Current 2.5A , 40V)		
Net Weight	3.1 kg (without lampshade)		
Package	1 Carton		
*Note 1 : -40°C (Only Support for 200~240V AC Input Voltage)			

### 120D Glass Lens

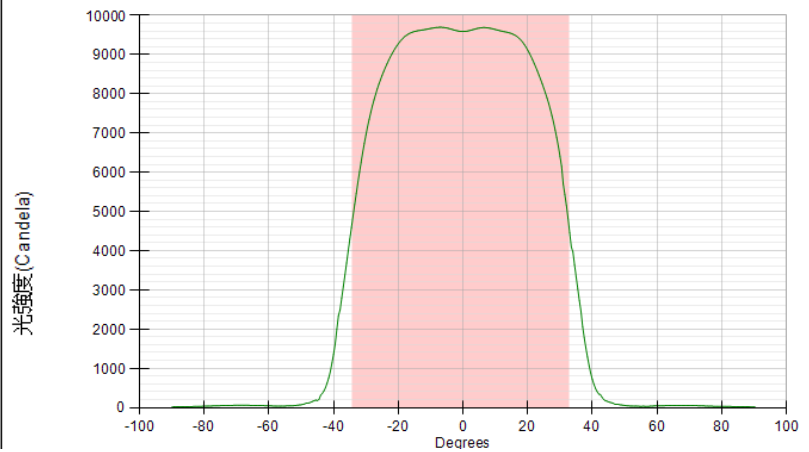
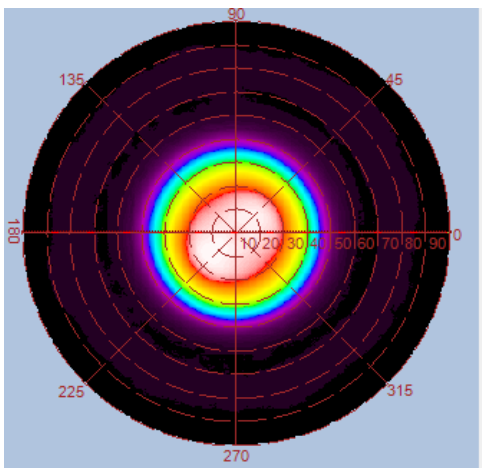
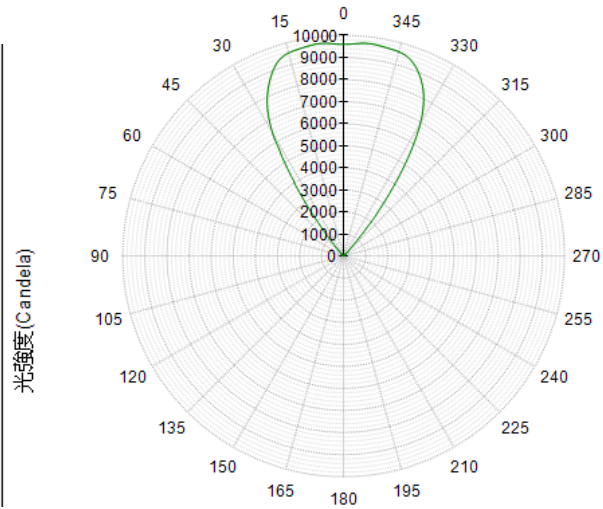
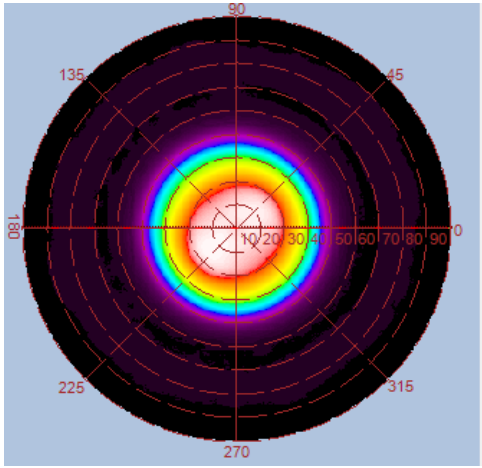
Type	GL-BL100-WW	GL-BL100-NW	GL-BL100-CW
Energy Used	96W		
Rated Life	30,000 Hours		
Input Voltage	100-240V AC (Driver with CUL Certificate Support 277V AC for North America only)		
Power Factor (PF)	0.98 at 120V AC, 0.97 at 240V AC		
CCT (color)	3000K	4000K	5000K
Luminous Flux	10000 lm	10700 lm	10800 lm
System Efficacy	104 lm/W	111 lm/W	113 lm/W
CRI (Minimum)	80	80	80
Beam Angle	120°		
Dimension	Φ280 x 230mm (without lampshade)		
IP Rating	IP66		
Operation Temperature	-40°C ~ +50°C *(Note 1)		
Bundled Driver	GP-LS100P-36 1E (Driver Output : Constant Current 2.5A , 40V)		
Net Weight	3.1 kg (without lampshade)		
Package	1 Carton		
*Note 1 : -40°C (Only Support for 200~240V AC Input Voltage)			

## Outline / Dimension

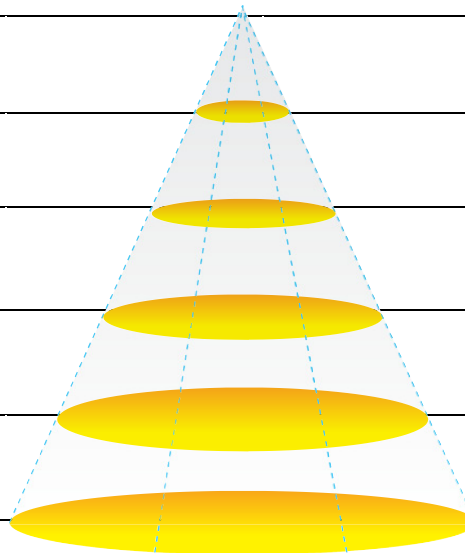


## Luminous Intensity Distribution Diagram

GL-BL100-WW-70D / CCT : 3000K

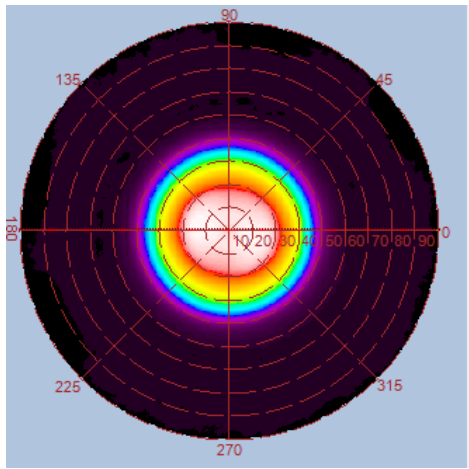


Height	E Avg.	E Max.	Diameter
1.0M	8770 Lx	13340 Lx	133 cm
2.0M	1985 Lx	2797 Lx	267 cm
3.0M	856 Lx	1177 Lx	400 cm
4.0M	475 Lx	646 Lx	534 cm
5.0M	300 Lx	404 Lx	668 cm

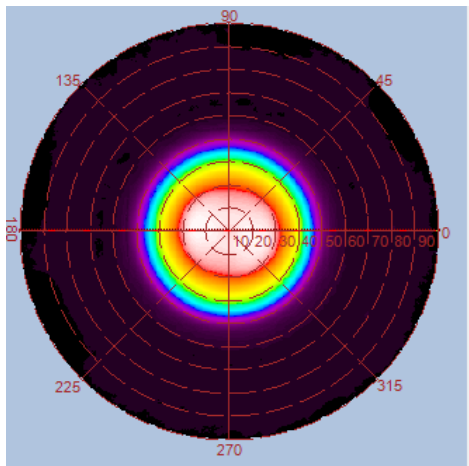
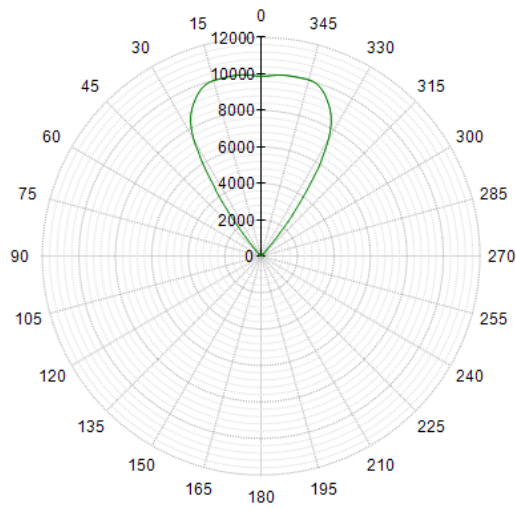


## Luminous Intensity Distribution Diagram

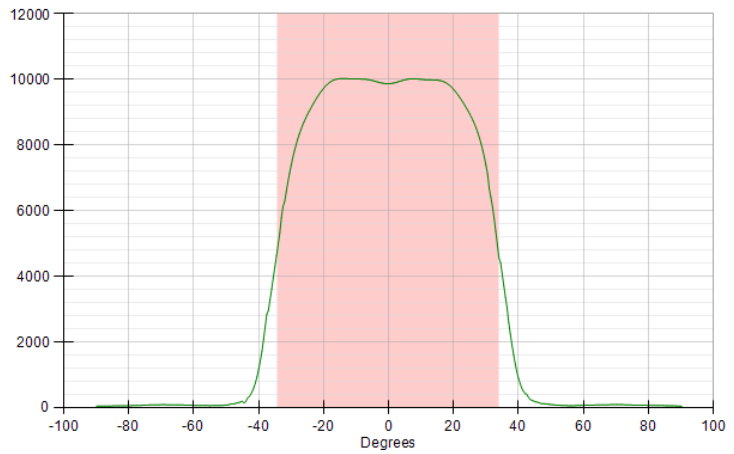
GL-BL100-NW-70D / CCT : 4000K



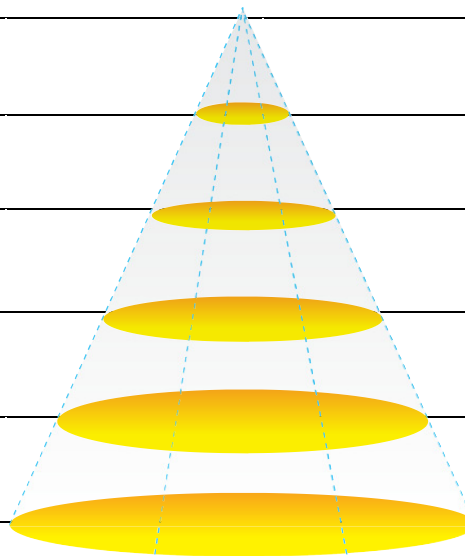
光強度 (Candela)



光強度 (Candela)

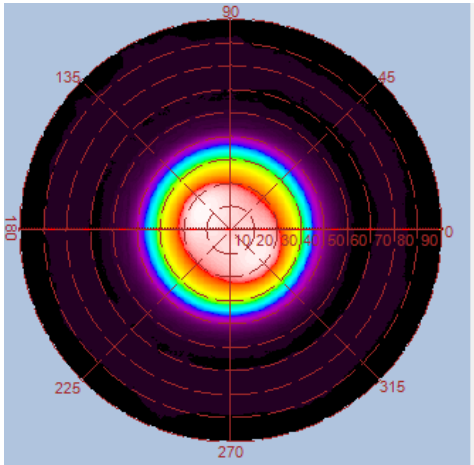


Height	E Avg.	E Max.	Diameter
1.0M	9041 Lx	13739 Lx	136 cm
2.0M	2061 Lx	2873 Lx	272 cm
3.0M	891 Lx	1212 Lx	408 cm
4.0M	494 Lx	661 Lx	544 cm
5.0M	313 Lx	418 Lx	680 cm

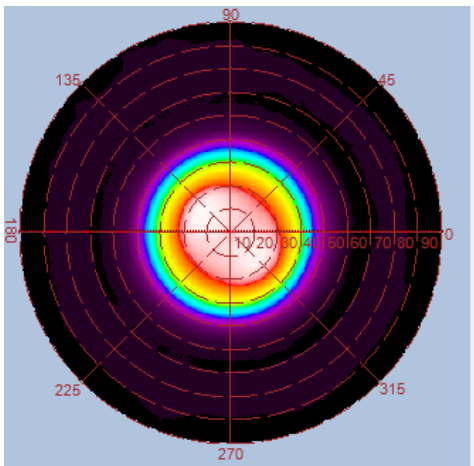
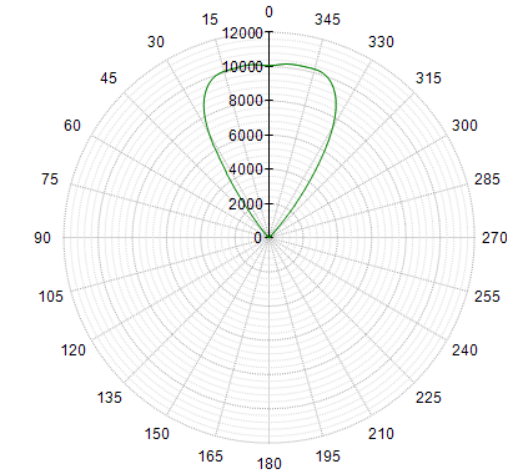


## Luminous Intensity Distribution Diagram

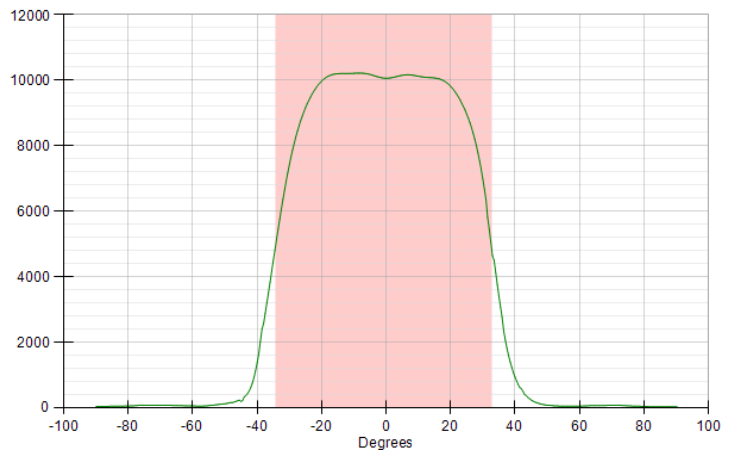
GL-BL100-CW-70D / CCT : 5000K



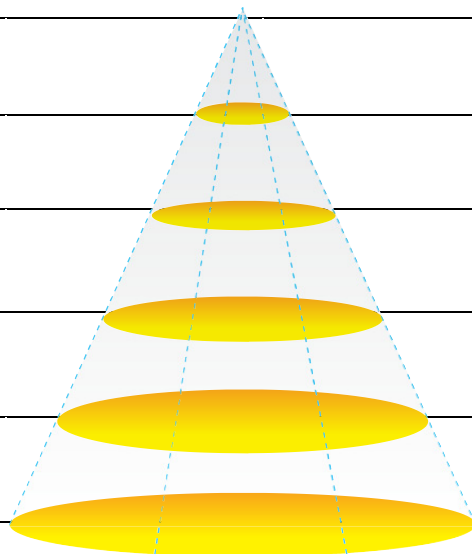
光強度 (Candela)



光強度 (Candela)

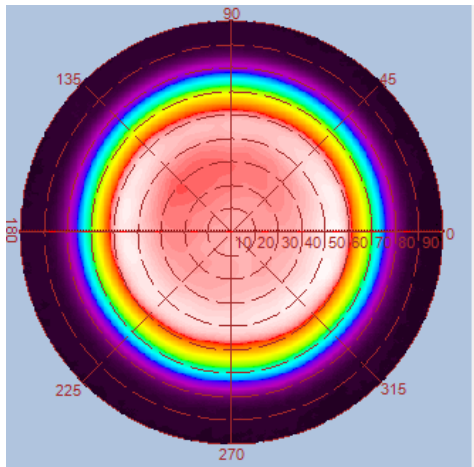


Height	E Avg.	E Max.	Diameter
1.0M	9284 Lx	14046 Lx	133 cm
2.0M	2114 Lx	2925 Lx	267 cm
3.0M	913 Lx	1239 Lx	400 cm
4.0M	505 Lx	674 Lx	534 cm
5.0M	320 Lx	425 Lx	668 cm

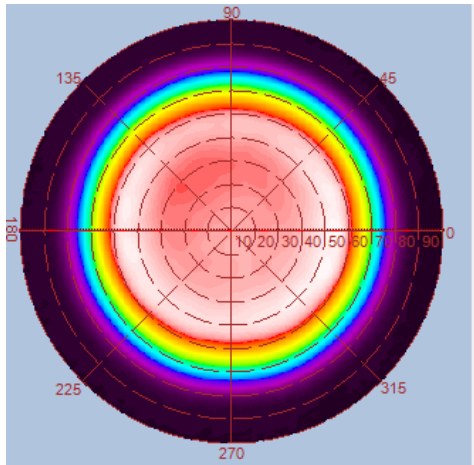
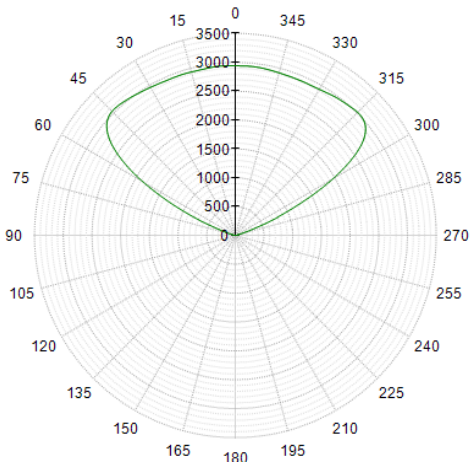


## Luminous Intensity Distribution Diagram

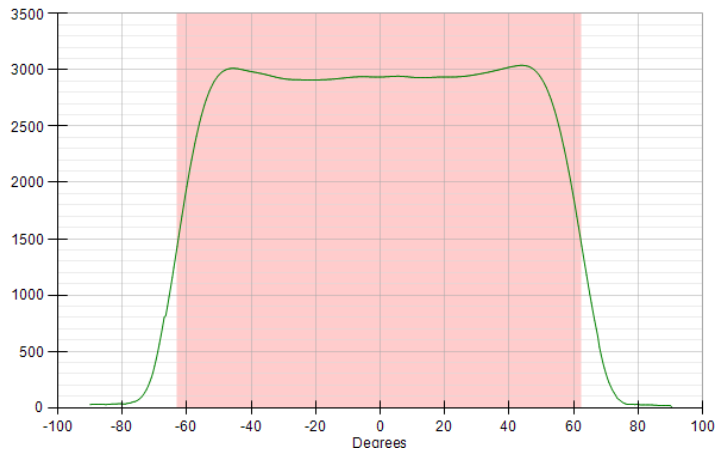
GL-BL100-WW-120D / CCT : 3000K



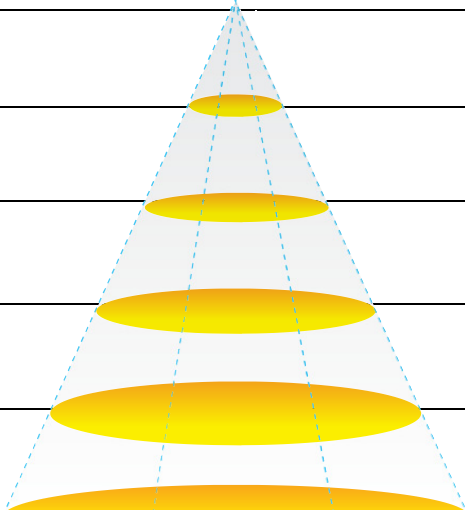
光強度(Candela)



光強度(Candela)

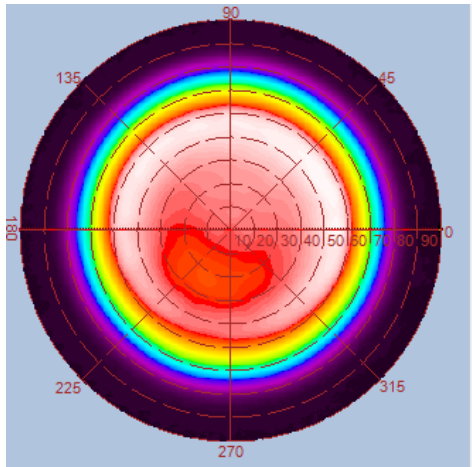


Height	E Avg.	E Max.	Diameter
1.0M	1332 Lx	3061 Lx	388 cm
2.0M	326 Lx	739 Lx	776 cm
3.0M	144 Lx	324 Lx	1164 cm
4.0M	80 Lx	181 Lx	1553 cm
5.0M	51 Lx	115 Lx	1941 cm

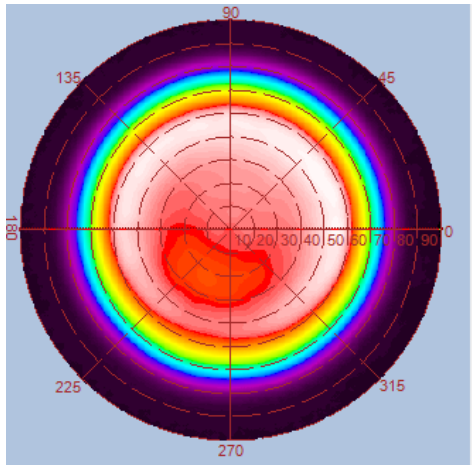
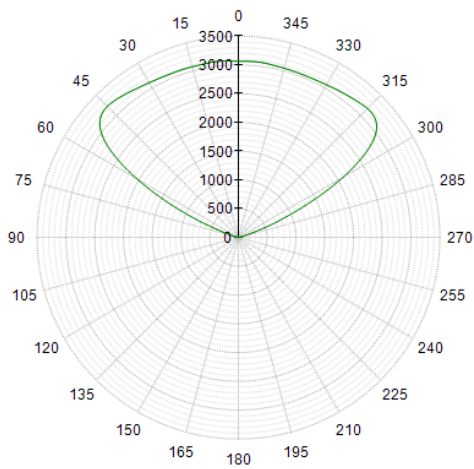


## Luminous Intensity Distribution Diagram

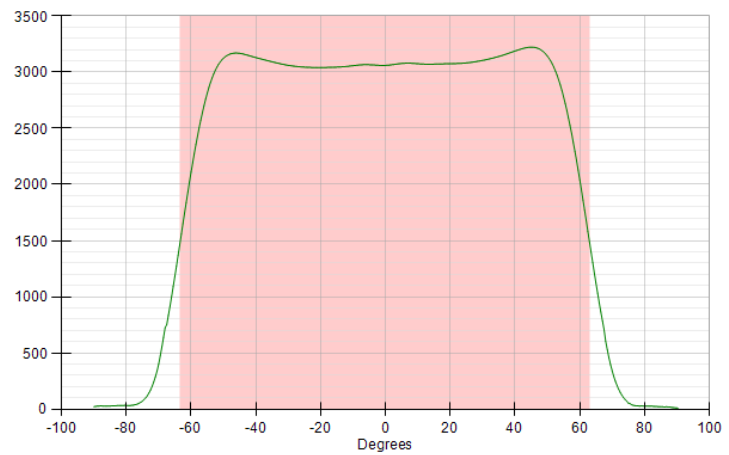
GL-BL100-NW-120D / CCT : 4000K



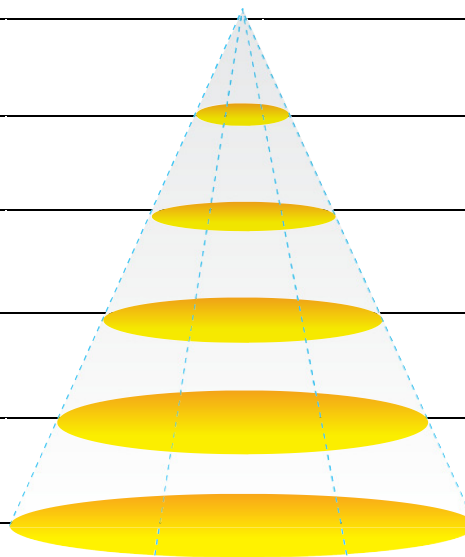
光強度(Candela)



光強度(Candela)



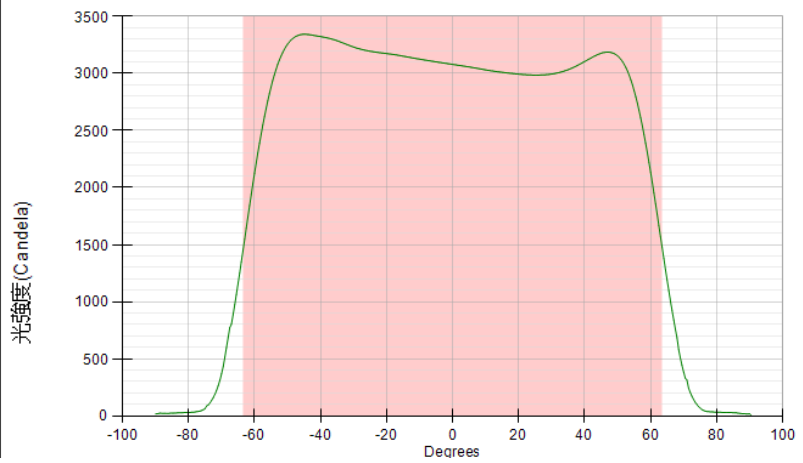
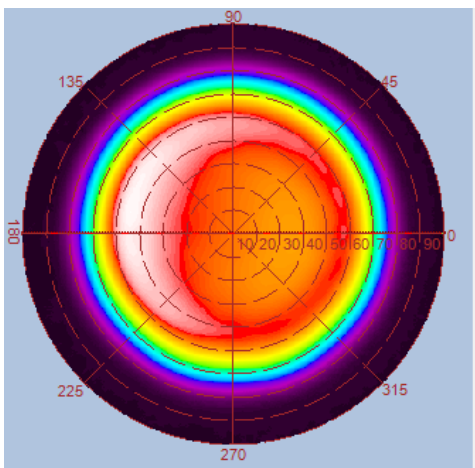
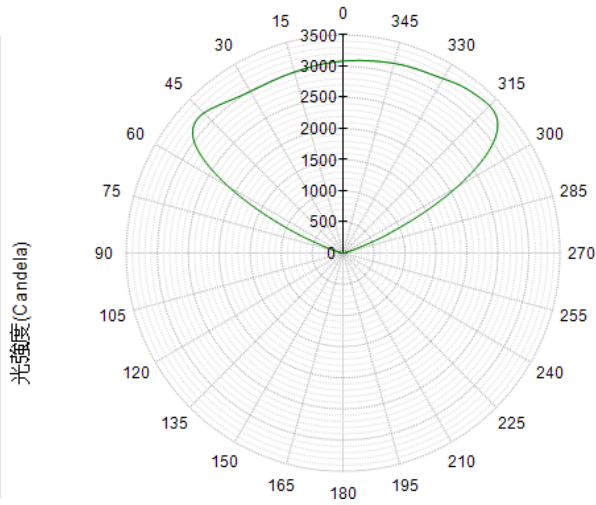
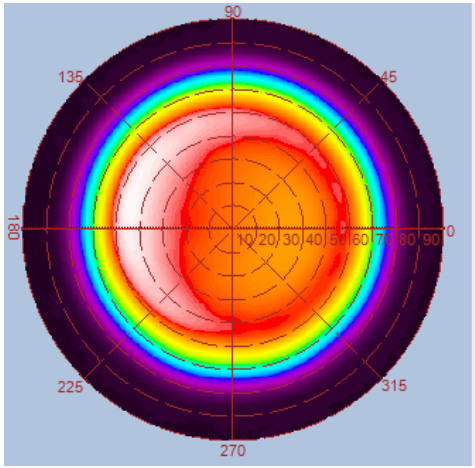
Height	E Avg.	E Max.	Diameter
1.0M	1371 Lx	3183 Lx	396 cm
2.0M	336 Lx	768 Lx	793 cm
3.0M	148 Lx	337 Lx	1190 cm
4.0M	83 Lx	189 Lx	1587 cm
5.0M	53 Lx	120 Lx	1983 cm



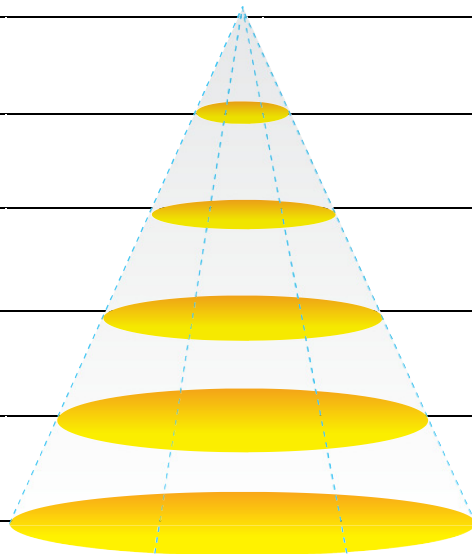


## Luminous Intensity Distribution Diagram

GL-BL100-CW-120D / CCT : 5000K

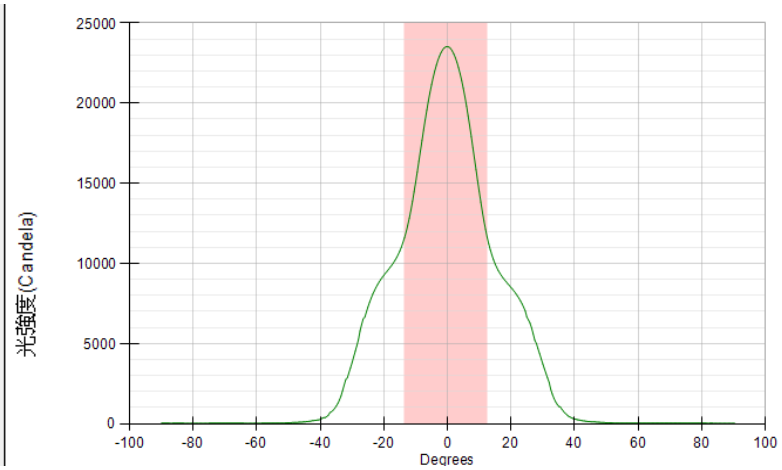
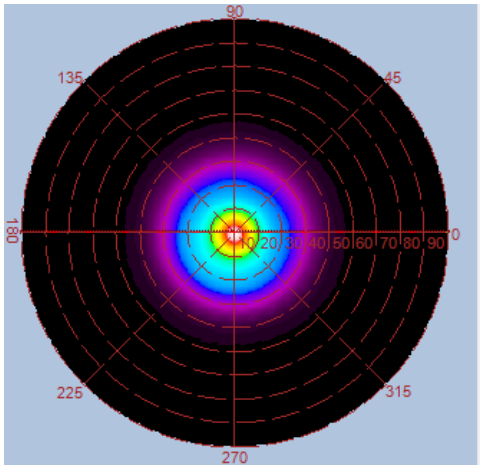
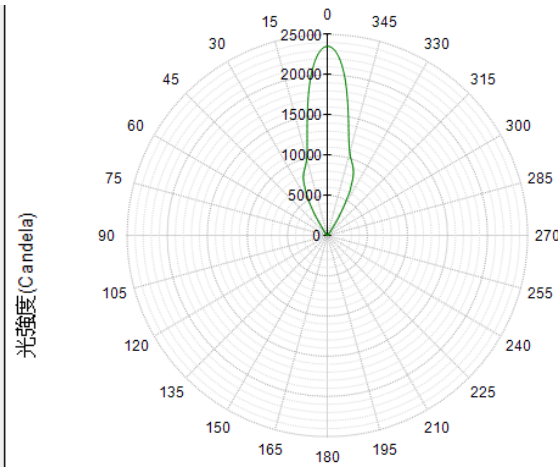
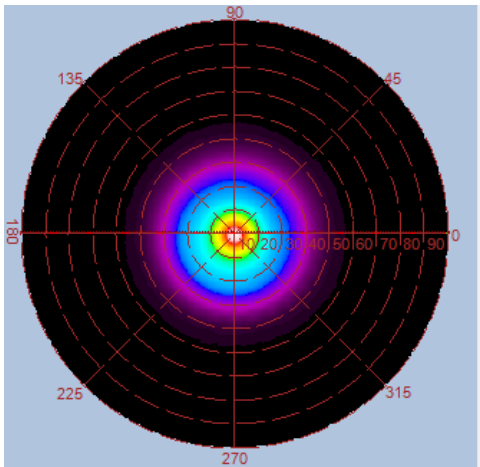


Height	E Avg.	E Max.	Diameter
1.0M	1374 Lx	3188 Lx	401 cm
2.0M	337 Lx	775 Lx	802 cm
3.0M	149 Lx	340 Lx	1203 cm
4.0M	83 Lx	189 Lx	1604 cm
5.0M	53 Lx	121 Lx	2005 cm

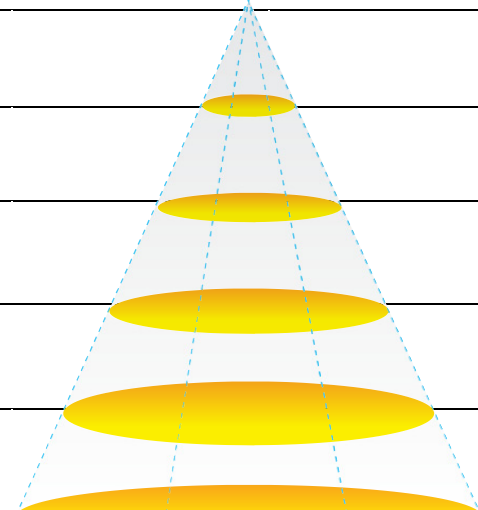


## Luminous Intensity Distribution Diagram (with LUX Enhancer)

GL-BL100-WW-60D / CCT : 3000K

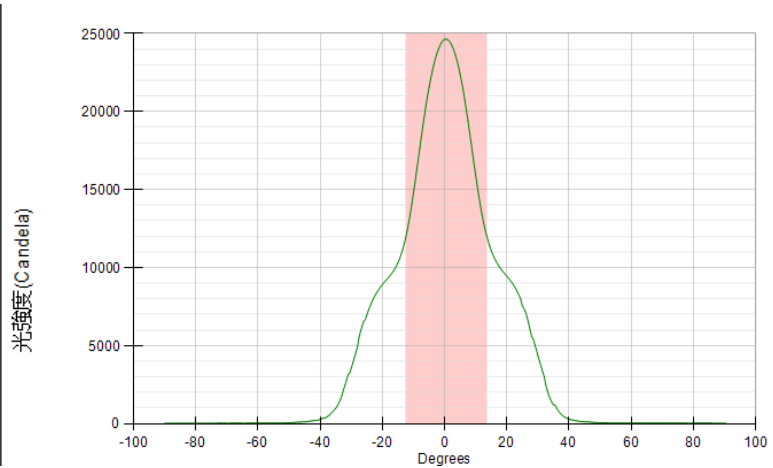
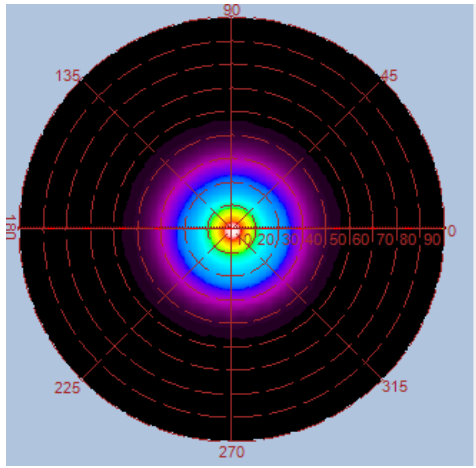
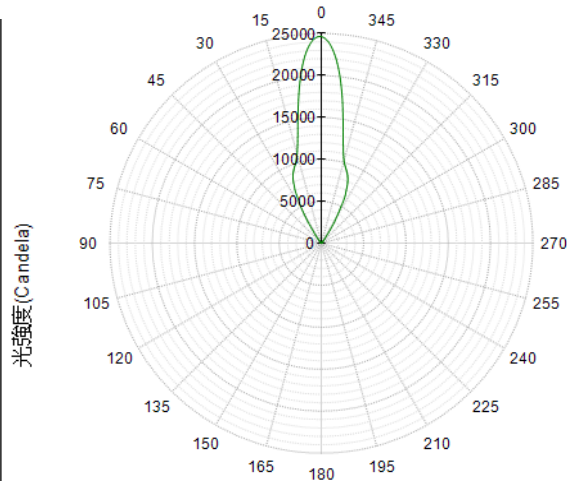
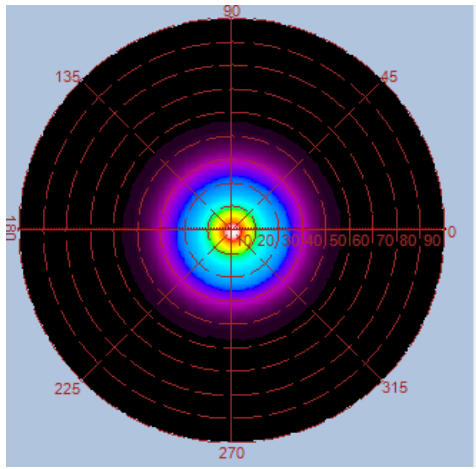


Height	E Avg.	E Max.	Diameter
1.0M	23312 Lx	34017 Lx	46 cm
2.0M	5236 Lx	7416 Lx	92 cm
3.0M	2226 Lx	3069 Lx	138 cm
4.0M	1225 Lx	1669 Lx	184 cm
5.0M	774 Lx	1053 Lx	230 cm

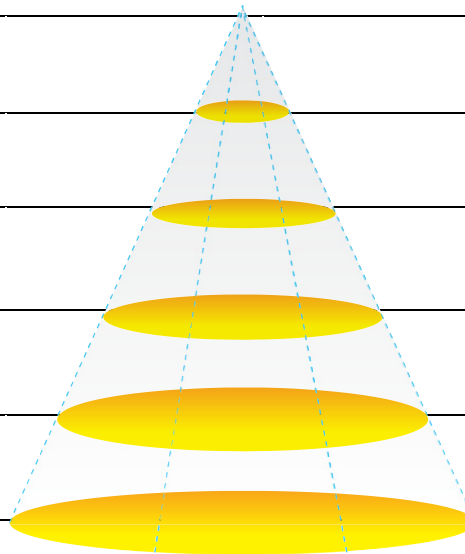


## Luminous Intensity Distribution Diagram (with LUX Enhancer)

GL-BL100-NW-60D / CCT : 4000K

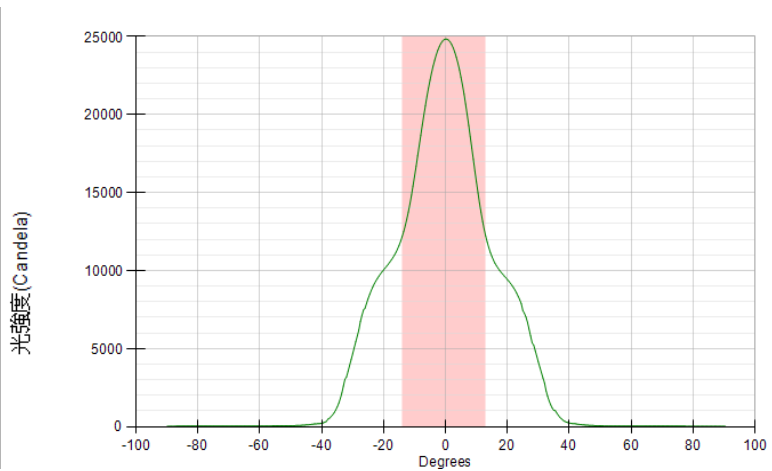
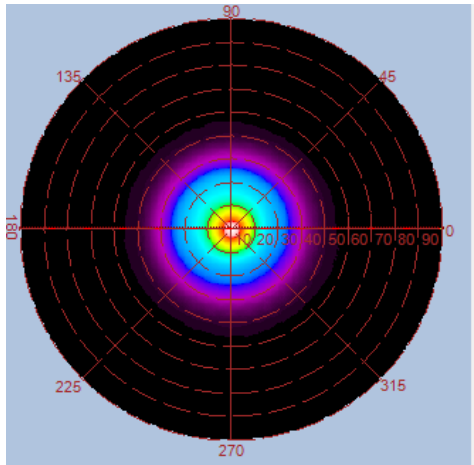
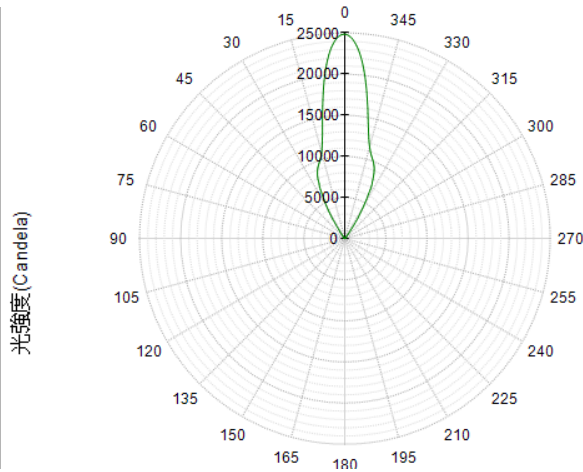
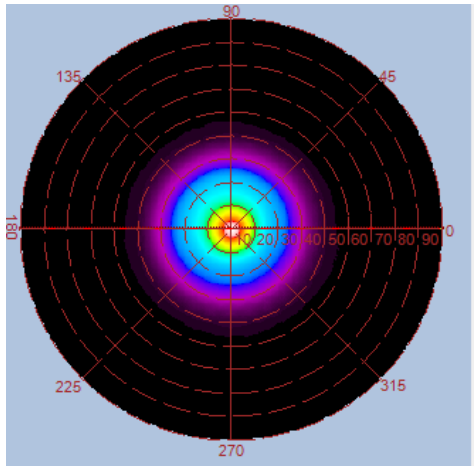


Height	E Avg.	E Max.	Diameter
1.0M	24418 Lx	36027 Lx	46 cm
2.0M	5456 Lx	7795 Lx	92 cm
3.0M	2318 Lx	3208 Lx	138 cm
4.0M	1281 Lx	1767 Lx	184 cm
5.0M	805 Lx	1099 Lx	230 cm

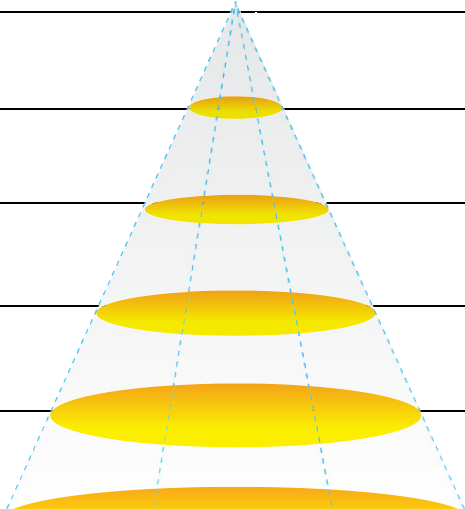


## Luminous Intensity Distribution Diagram (with LUX Enhancer)

GL-BL100-CW-60D / CCT : 5000K



Height	E Avg.	E Max.	Diameter
1.0M	24570 Lx	36523 Lx	48 cm
2.0M	5467 Lx	7823 Lx	96 cm
3.0M	2328 Lx	3269 Lx	144 cm
4.0M	1283 Lx	1777 Lx	192 cm
5.0M	809 Lx	1117 Lx	240 cm



### With/Without LUX Enhancer Comparison Table

Item	BL150-60D-CW (without LUX Enhancer)	BL100-60D-CW (with LUX Enhancer)
Input Power(W)	96	96
Luminous Flux (Lm)	11000	9700
CCT (color)	5000K	5000K
Beam Angle	60°	27°
System Efficacy	115 lm/W	101 lm/W
LUX @ 1M (E-Max)	17850	36523
LUX Enhancement ( % )	-	205%
Luminous Efficiency ( % )	-	88.2%

### Photograph



120D lampshade  
(optional accessory)



60D lampshade  
(optional accessory)



Bracket  
(optional accessory)



Lux Enhancer  
(optional accessory)

